

Facilities Operations, Maintenance and Planning
Ana Rijo-Conde, Interim Assistant Superintendent

SUBJECT: GRANT OF EASEMENT AGREEMENT TO FLORIDA POWER AND LIGHT COMPANY AT THOMAS JEFFERSON MIDDLE SCHOOL SITE, LOCATED AT 525 NW 147 STREET, MIAMI, FLORIDA

COMMITTEE: FACILITIES MANAGEMENT

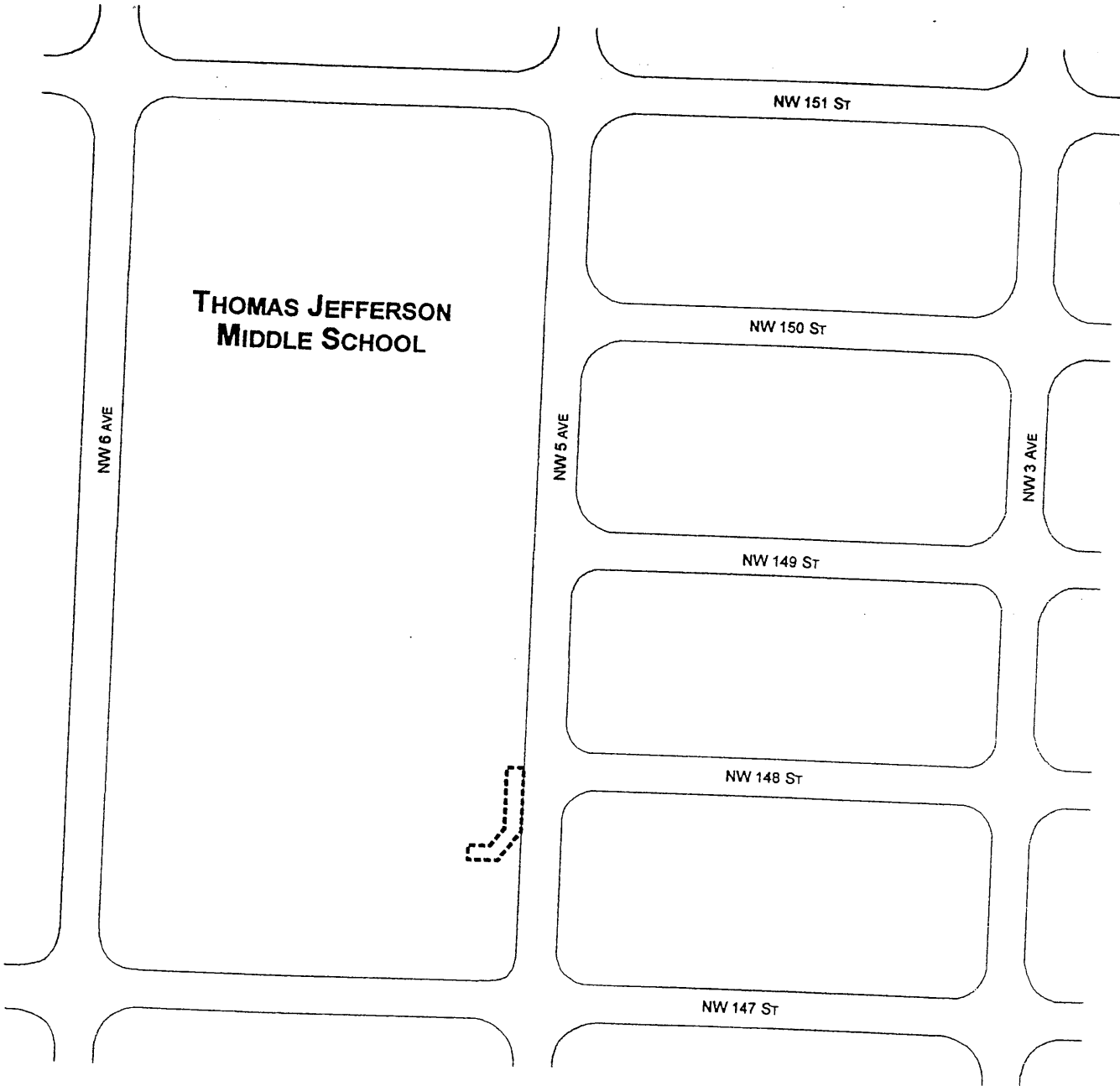
In connection with construction of a new addition at Thomas Jefferson Middle School (School), the Florida Power & Light Company (FP&L), has been asked to provide electrical service to the School. As a result, FP&L has requested that an easement be granted for the service, at the location depicted on Attachment A.

A Grant of Easement Agreement (Agreement), will be reviewed and approved by the School Board Attorney's Office and the Office of Risk and Benefits Management prior to execution. The ACCESS Center II Assistant Superintendent recommends approval of the Agreement. The Office of Capital Improvement Projects, the Department of Safety, Environmental and Hazards Management, and the Department of Maintenance and Operations also concur with the proposed easement.

RECOMMENDED: That The School Board of Miami-Dade County, Florida, authorize the Chair and the Secretary to execute a Grant of Easement Agreement with Florida Power & Light Company, as described above, at the Thomas Jefferson Middle School site.

JG:rr

LOCATION MAP



LEGEND

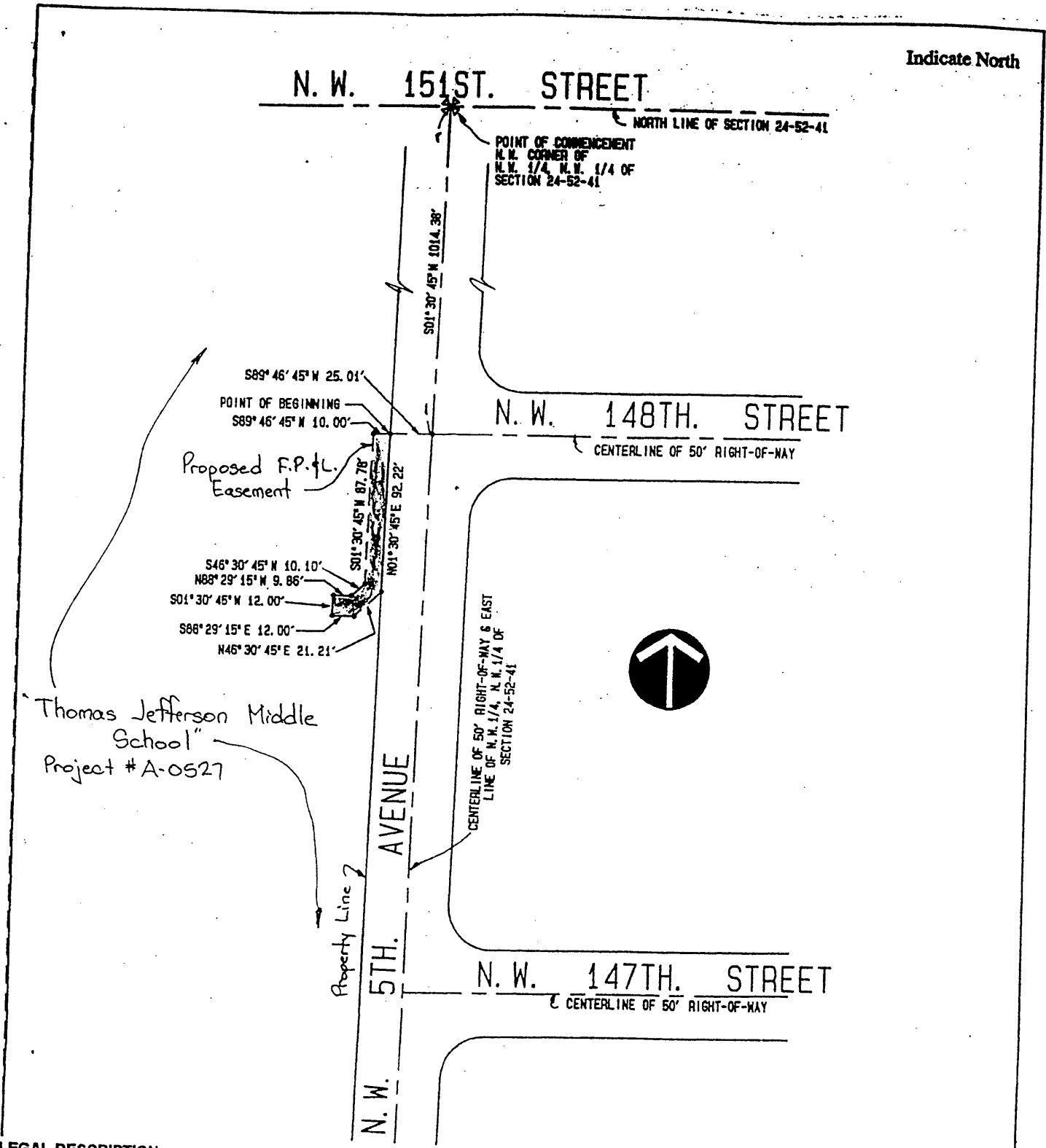
----- PROPOSED FLORIDA POWER & LIGHT COMPANY EASEMENT

(NOT TO SCALE)



EXHIBIT A

Indicate North



Thomas Jefferson Middle School
Project # A-0527

LEGAL DESCRIPTION:

A portion of the N.W. 1/4 of the N.W. 1/4 of Section 24, Township 52 South, Range 41 East, Miami-Dade County, Florida, being more particularly described as follows:

Commence at the Northwest corner of the N.W. 1/4 of the N.W. 1/4 of said Section 24; Thence run S01°30'45"W. along the East line of the N.W. 1/4 of the N.W. 1/4 of said Section 24; and also being the centerline of N.W. 5th Avenue for a distance of 1014.38 feet to a point of intersection with the centerline of N.W. 148th Street; Thence run S89°46'45"W. for a distance of 25.01 feet to the West right-of-way line of said N.W. 5th Avenue and also being the Point of Beginning of parcel of land hereinafter to be described; Thence run continue S89°46'45"W. for a distance of 10.00 feet to a point; Thence run S01°30'45"W., parallel with the West right-of-way of said N.W. 5th Avenue for a distance of 87.78 feet to a point; Thence run S46°30'45"W. for a distance of 10.10 feet to a point; Thence run N88°29'15"W. for a distance of 9.86 feet to a point; Thence run S01°30'45"W. for a distance of 12.00 feet to a point; Thence run S88°29'15"E. for a distance of 12.00 feet to a point; Thence run N46°30'45"E. for a distance of 21.21 feet to a point of intersection with the West right-of-way line of said N.W. 5th Avenue; Thence run N01°30'45"E. along the West line of said N.W. 5th Avenue for a distance of 92.22 feet to the Point of Beginning. Said described lands contains 1,188 square feet, more or less.