

Rudolph F. Crew, Ed.D., Superintendent of Schools

**SUBJECT:       REQUEST THAT THE SCHOOL BOARD ENDORSE THE  
                  SCHOOL HEALTH CONNECT STRATEGIC BUSINESS PLAN**

**COMMITTEE:   SCHOOL SUPPORT AND ACCOUNTABILITY**

*Introduction*

At the September 7, 2005 School Board meeting, the School Board endorsed the School Health Connect Conceptual Proposal. This proposal outlined an ambitious plan to meet the fourth objective in the District's Wellness Plan of providing school-based health services to all M-DCPS students. Since then, a School Health Connect planning group, composed of representatives from M-DCPS, Miami-Dade County Health Department (MDCHD), The Children's Trust (TCT) and other community stakeholders, has been working to develop a business plan to guide the implementation of School Health Connect. The School Health Connect Strategic Business Plan was unanimously endorsed by TCT Board on January 23, 2006.

The strategic business plan defines a governance body proposal, a more refined model for School Health Connect Teams, a management structure, and a financial options report. The implementation timeline is defined by three phases - Phase I – 2005-2006 (Transition Phase), Phase II – July 2006 – June 2008, and Phase III – 2008-2011.

*Governance Body Proposal*

During Phase I, TCT will serve as the fiscal agent, responsible for managing and distributing funds for School Health Connect in accordance with the programmatic goals and objectives set forth by the School Health Connect Planning Committee.

The Transition Team will serve as the temporary governing body for School Health Connect. This team will be co-chaired by a representative of TCT, M-DCPS, and MDCHD. These three members will define the authority and the decision-making needed to govern the planning, implementation, operation, and management processes and procedures. Other members of the team will include representatives from multiple stakeholders groups.

During Phase I the Transition Team will be charged with:

- Creating by-laws and structures that constitute the permanent School Health Connect governance
- Define funding priorities to TCT for program implementation
- Determine staff positions and approve staff hiring for School Health Connect Executive Director and Regional Managers. These positions will be employees of TCT during Phase I
- Work with M-DCPS and MDCHD to ensure timely program implementation

An Executive Director will be hired by TCT to staff the Transition Team. The Executive Director shall be responsible for program oversight and work closely with MDCHD, M-DCPS, and program providers to ensure delivery of quality services.

#### *Model for School Health Connect Teams*

School Health Connect will provide every school with a school-based health team to ensure that a coordinated level of healthcare is consistently available at every school, including but not limited to:

- Link to medical home
- Mandated screenings and assessments with appropriate follow-up
- System for dealing with crisis medical situations
- Appropriate administration of medications
- Social histories
- Mental health counseling and primary care as appropriate

Each team will be composed of a school nurse, school social worker, and two health technicians. Currently, it is estimated that each team will serve two schools. Each team will be associated with one or more community health providers, who will provide health services to students and/or link students to medical homes.

#### *Management Structure*

The management of School Health involves monitoring and supervising each aspect of School Health Connect program. Please see Attachment A.

#### *Finances and Phases I – III Implementation*

The projected annual cost of School Health Connect is \$40 million. TCT has allocated \$6 million for FY 2005 – 2006 and \$10 million per fiscal year for subsequent years. MDCHD will dedicate its annual appropriation of \$3 million from the Florida legislature to School Health Connect. The School Health Services Plan for 2006-2008 will align to School Health Connect. M-DCPS will dedicate \$7 million to School Health Connect. This financial commitment will be made by re-aligning existing District staff, social workers and health technicians,

to School Health Connect Teams. Staff will be realigned over several years time to ensure that current service provision is not compromised.

Funding for Phase I – December 2005 through June 2006

- TCT will award \$1 million to school-based health clinics at-risk of closing for lack of funding – approved at January 23, 2006 TCT Board meeting
- TCT will award \$4.5 million to community health providers to fund teams in schools that currently do not have a school health team – approved at January 23, 2006 TCT Board meeting
- It is currently estimated that 15% of schools will be served during this Phase I
- The School Health Connect Executive Director and Transition Team will develop and begin to implement a Resource Development Plan for Phases II and III

Funding/Staffing for Phase II – July 2006 through June 2008

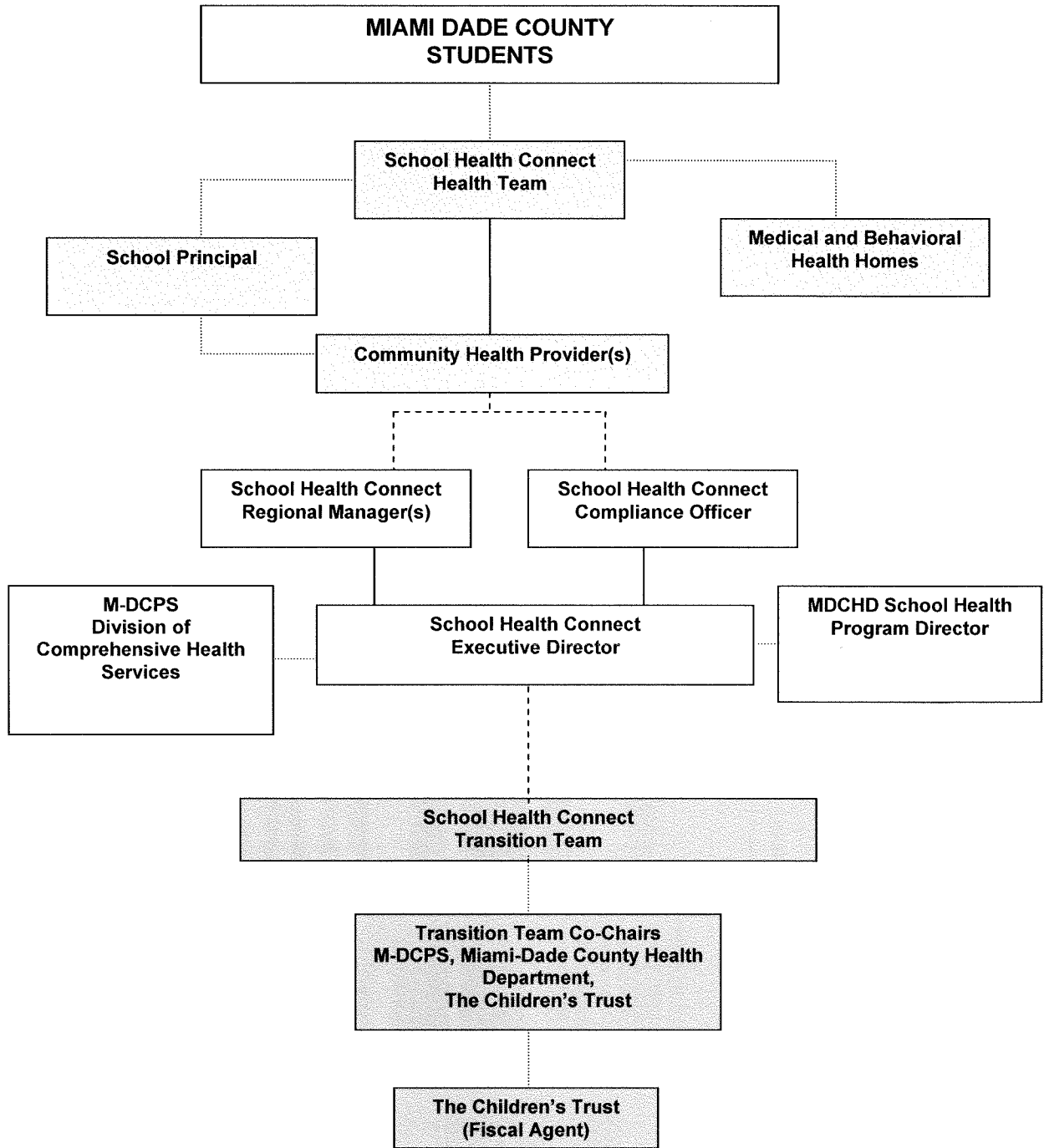
- MDCHD will realign existing school health services to School Health Connect
- M-DCPS will realign a percentage of District social workers and health technicians to serve on School Health Connect Teams. The realignment will be determined by Office of Students Services
- TCT will award \$10 million per fiscal year to community health providers
- It is estimated that an additional 50% of schools will be served during Phase II
- The School Health Connect Executive Director and Governing Body will continue implementing the Resource Development Plan for Phase III

Funding/Staffing for Phase III – July 2008 through June 2011

- Within 3-5 years, every school will be served by a School Health Connect Team

**RECOMMENDED:** Request that The School Board of Miami-Dade County, Florida endorse the School Health Connect Strategic Business Plan.

# ATTACHMENT A



### Diagram Key

**Colors**

- Salmon –School Health Connect Transition Governance Team
- Yellow –School Health Connect Program Management Team
- Green – School Health Connect Direct Service Providers

**Lines**

- Solid Line - Direct Supervision \_\_\_\_\_
- Dashed Line - Contractual Relationship - - - - -
- Dotted Lines – Programmatic Collaboration and Coordination .....