

Office of School Facilities  
Rose Diamond, Chief Facilities Officer

**SUBJECT: AUTHORIZATION TO GRANT A WATER LINE EASEMENT  
LOCATED AT CORAL GABLES SENIOR HIGH SCHOOL SITE AT  
450 BIRD ROAD, MIAMI, FLORIDA IN FAVOR OF MIAMI-DADE  
COUNTY  
PROJECT NO. A-0810**

**COMMITTEE: FACILITIES AND CONSTRUCTION REFORM**

In order to maintain a water line easement constructed to provide water services to the Coral Gables Senior High School site, Miami-Dade County has requested a water line easement be granted by the district.

The water line easement described will cover the area of the water line installations at the 25-acre school site. This area is legally described in Exhibit "A", attached hereto.

The Grant of Easement will be reviewed and approved by the School Boards Attorney's Office prior to execution. In addition, the proposed easement has been reviewed and recommended by the Office of School Facilities. Public utility facilities constructed on Board-owned property will be conveyed, with appropriate easements, to Miami-Dade County for future maintenance and operations.

**RECOMMENDED:** That The School Board of Miami-Dade County, Florida, authorize the execution of the water line easement at the Coral Gables Senior High School site, Project No. A-0810, in favor of Miami-Dade County.

LML

**JOSE E. FUXA, PSM**  
7555 SW 30<sup>TH</sup> STREET, MIAMI, FLORIODA 33155  
PH. 305-261-7240 FAX 305-261-2841

**LEGAL DESCRIPTION**

A portion of the Northwest ¼ of Section 20, Township 54 South, Range 41 South, laying and being in Miami-Dade County, Florida, and being more particularly described as follows

Commence at the point of intersection of the center lines of Lorenzo Avenue and Riviera Drive as shown on the Plat of Riviera Section, Part 1, Coral Gables, as recorded in Plat Book 28 at Page 31, recorded in the Public Records of Miami-Dade County, Florida; thence run N 02° 54' 14" W along the center line of Riviera Drive, for a distance of 98.14 feet; thence N 87° 45' 47" E for 50.00 feet to the Point of Beginning of the following described utility easement, said point being on the Easterly right of way line of Riviera Drive; thence continue along the last described course for 6.99 feet; thence S 02° 14' 13" E for 4.60 feet; thence N 87° 45' 47" E for 12.00 feet; thence N 02° 24' 13" W for 4.60 feet; thence N 87° 45' 47" E for 5.00 feet; thence N 02° 14' 13" W for 18.91 feet; thence S 87° 45' 47" W for 24.21 feet to a point on the Easterly right of way line of said Riviera Drive; thence S 02° 54' 14" E along said right of way line for 18.91 feet to the Point of Beginning.

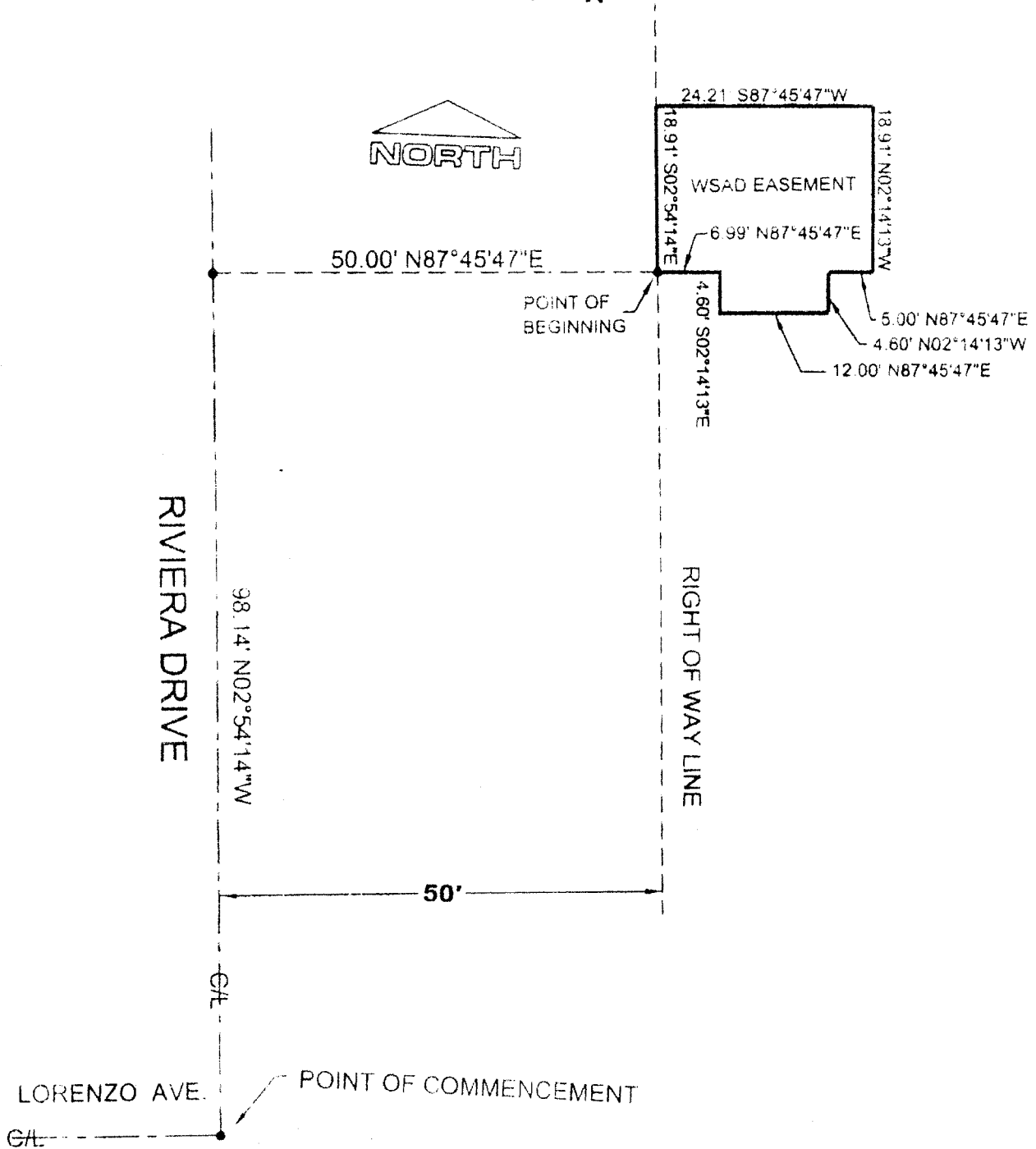
All of the above lying and being in Miami-Dade County, Florida.



Jose E. Fuxa, PSM  
Certificate No. 3088  
State of Florida  
December 28, 2005

(For As built DW 2004-035)

EXHIBIT "A"



SKETCH TO ACCOMPANY LEGAL DESCRIPTION