

Office of School Facilities
Rose Diamond, Chief Facilities Officer

**SUBJECT: AUTHORIZATION TO GRANT A WATER LINE EASEMENT
LOCATED AT HIALEAH-MIAMI LAKES SENIOR HIGH SCHOOL
SITE AT 7977 WEST 12 AVENUE, MIAMI, FLORIDA IN FAVOR OF
THE CITY OF HIALEAH
PROJECT NO. A0825S7313CM**

COMMITTEE: FACILITIES AND CONSTRUCTION REFORM

In order to maintain a water line easement constructed to provide adequate fire protection services to the Hialeah-Miami Lakes Senior High School site, the City of Hialeah has requested a 12-foot wide water line easement be granted by the district.

The 12-foot wide water line easement described will cover the area of the water line installations at the 36-acre school site. This area is legally described in Exhibit "A", attached hereto.

The Grant of Easement will be reviewed and approved by the School Boards Attorney's Office prior to execution. In addition, the proposed easement has been reviewed and recommended by the Office of School Facilities. Public utility facilities constructed on Board-owned property will be conveyed, with appropriate easements, to the City of Hialeah for future maintenance and operations.

RECOMMENDED: That The School Board of Miami-Dade County, Florida, authorize the execution of the water line easement at the Hialeah-Miami Lakes Senior High School site, Project No. A0825S7313CM, in favor of the City of Hialeah.

LML

RECEIVED

DEPT. OF WATER & SEWERS
CITY OF HIALEAH, FLORIDA

November 2, 2005

EXHIBIT "A"

12 FOOT WIDE WATER EASEMENT

LEGAL DESCRIPTION:

A portion of the West 1/2 of Tract 29 and 30 of Florida Fruit Land Subdivision Company's No. 1, according to the plat thereof as recorded in Plat Book 2, at Page 17 of the Public Records of Miami-Dade County, Florida, lying and being in the NW 1/4 of Section 25, Township 52 South, Range 40 East; the centerline of a 12.00 foot water easement more particularly described as follows:

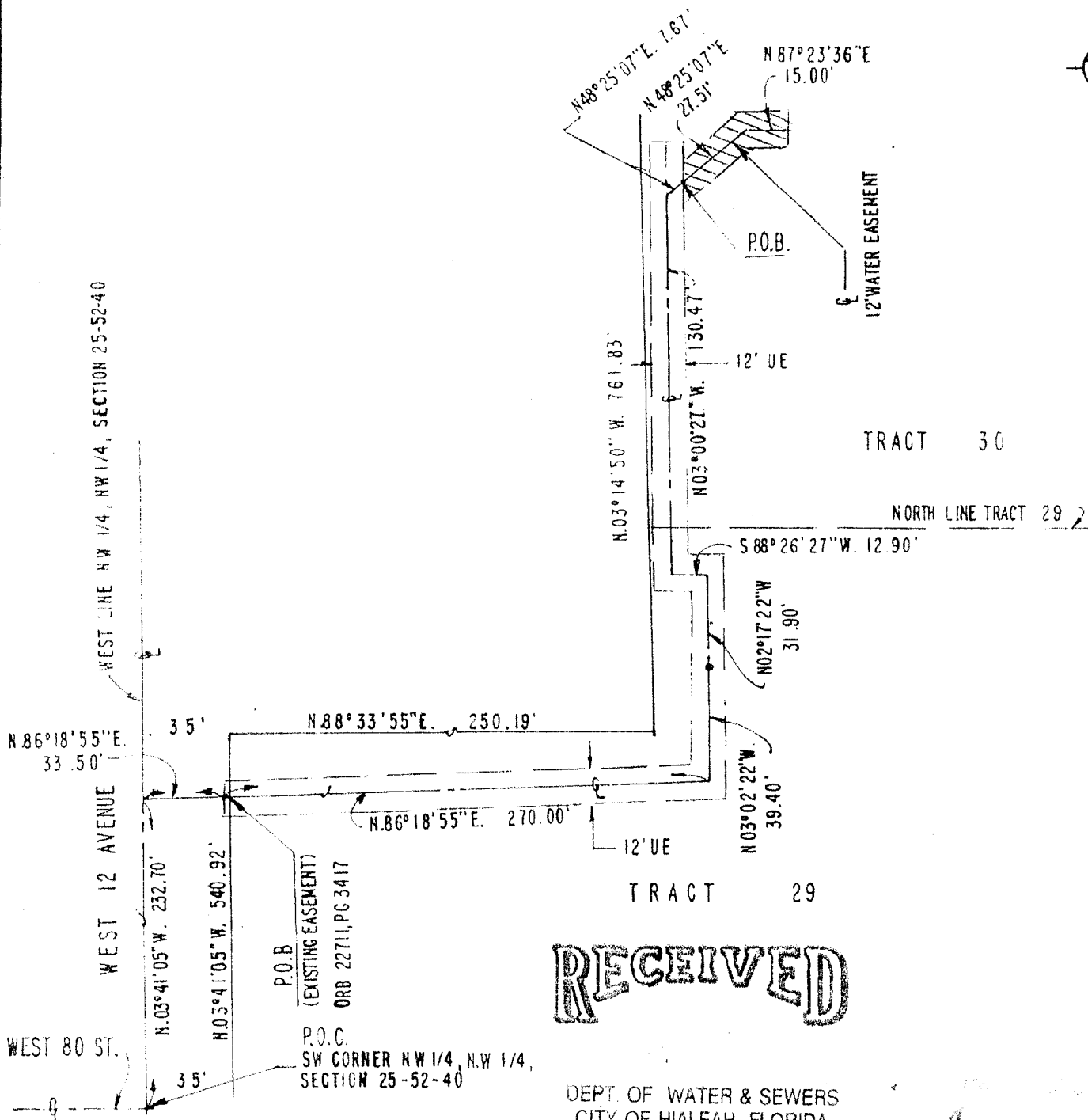
Commence at the Southwest corner of the NW 1/4 of the NW 1/4 of said SECTION 25; Thence, N03°-41'-05"W along the West Line of the NW 1/4 of the NW 1/4 of said Section 25 a distance of 232.70 feet; Thence, N86°-18'-55"E a distance of 33.50 feet to the point of beginning of an existing 12.00 feet wide utility easement recorded in Official Record Book 22711, at Page 3417 of the Public Records of Miami-Dade County, Florida; Thence, continue on and along the centerline of said existing utility easement for the next five courses: N86°-18'-55"E a distance of 270.00 feet; N03°-02'-22" W a distance of 39.40 feet; N02°-17'-22"W a distance of 31.90 feet; S88°-26'-27"W a distance of 12.90 feet; N03°-00'-27"W a distance of 130.47 feet; Thence, N48°-25'-07"E a distance of 7.67 feet to the Point of Beginning of the centerline of a 12.00 foot wide water easement; Thence, N48°-25'-07"E a distance of 27.51 feet; Thence, N87°-23'-36"E a distance of 15.00 feet to the Point of Termination of the centerline of said 12.00 foot water easement. The easement lines on each side of said centerlines are to be extended or shortened as necessary to maintain a continuous 12 foot easement along the routes described. The centerline of the easement described above is approximately coincident with the location of the water facilities

E.R. BROWNELL & ASSOCIATES, INC.

The Description and the accompanying Sketch are not valid without the signature and raised seal of a Florida Licensed Surveyor and Mapper. The Description and the accompany Sketch are not valid one without the other.

SKETCH TO ACCOMPANY LEGAL DESCRIPTION

NOT TO SCALE



RECEIVED

DEPT. OF WATER & SEWERS
CITY OF HIALEAH, FLORIDA

THIS IS NOT A BOUNDARY SURVEY

PREPARED BY:

Thomas Brownell

SKETCH TO ACCOMPANY LEGAL DESCRIPTION
HIALEAH MIAMI LAKES SENIOR HIGH
WATER EASEMENT

E. R. BROWNELL & ASSOCIATES, INC.

LAND SURVEYORS - CONSULTING ENGINEERS

3152 CORAL WAY MIAMI, FL 33145

(305) 446-3511

DR. BY : TB

DATE : NOV. 2, 2005

SK. SM-1870

JOB # 56157

SCALE: 1" = NTS