

Office of School Facilities
Rose Diamond, Chief Facilities Officer

SUBJECT: AUTHORIZATION TO ENTER INTO A GRANT OF EASEMENT AGREEMENT WITH FLORIDA POWER AND LIGHT COMPANY, FOR BRENTWOOD ELEMENTARY SCHOOL, LOCATED AT 3101 NW 191 STREET, MIAMI, FLORIDA

COMMITTEE: FACILITIES AND CONSTRUCTION REFORM

In order to meet the electrical service requirements associated with the construction of a Primary Learning Center (PLC) at Brentwood Elementary School, Florida Power & Light Company (FP&L) has requested an easement approximately 10' x 453' (for a total of 4,530 square feet or .10 acres, more or less), be granted. This area is legally described in Exhibit "A", attached hereto.

The Grant of Easement Agreement will be reviewed and approved by the School Board Attorney's Office and the Office of Risk and Benefits Management prior to execution. The School Principal, the Office of School Facilities Construction, the Division of Safety and Emergency Management, and Facilities Operations, Maintenance also concur with the proposed location of the FP&L easement.

RECOMMENDED: That The School Board of Miami-Dade County, Florida, authorize the Chair and Secretary to execute a Grant of Easement Agreement with Florida Power and Light Company for Brentwood Elementary School, as described above.

ORM:scj

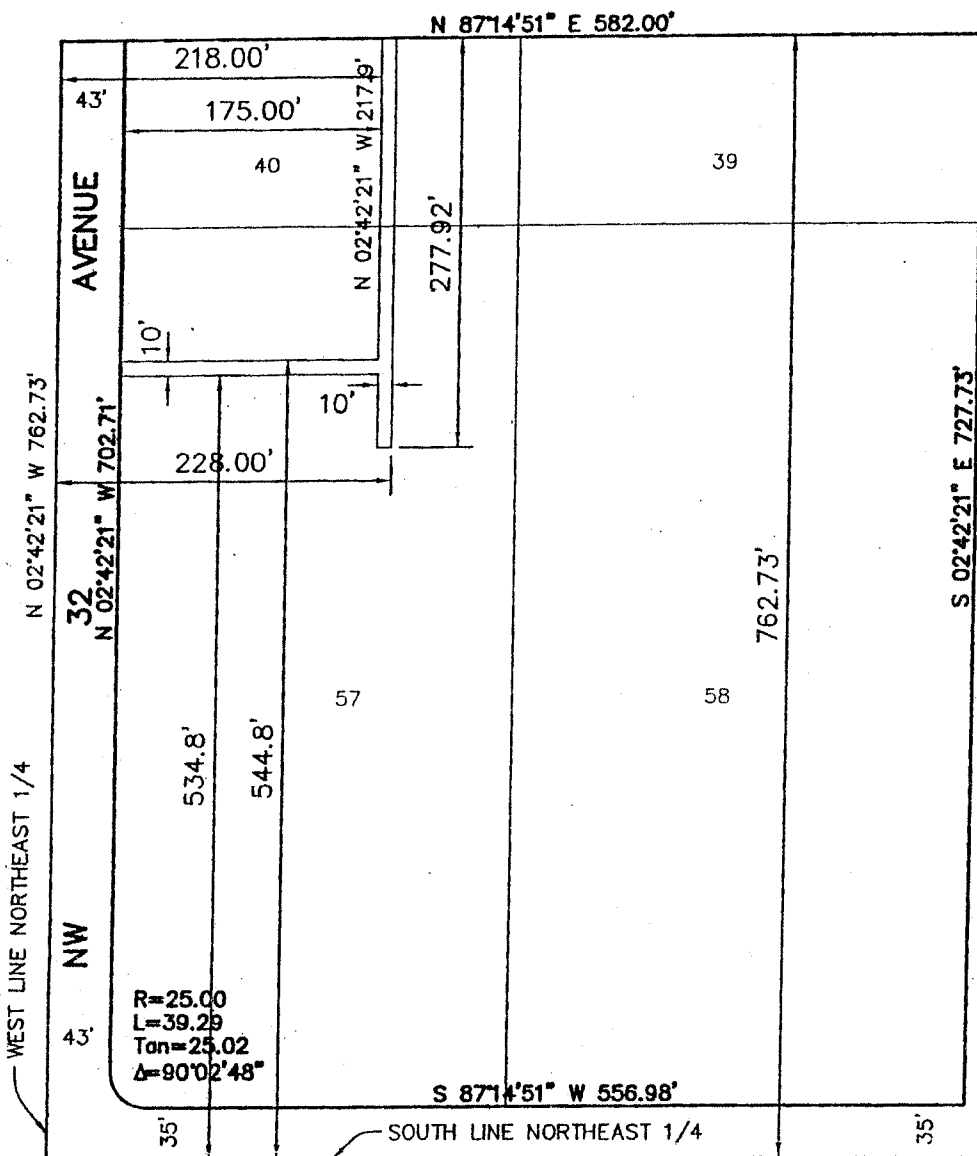
SKETCH TO ACCOMPANY LEGAL DESCRIPTION

EXHIBIT "A"

10 FOOT WIDE FLORIDA POWER
AND LIGHT COMPANY EASEMENT

PARK SITE - TRACT "H"

"LESLIE ESTATES SECTION TWO"
PLAT BOOK 93, PG 65



TRACT "A"
"LESLIE ESTATES SECTION ONE"
PLAT BOOK 93, PG 64

I:\11\110003\330001-AH2 BRENTWOOD ELEMENTARY.dwg\5860-FPL ESM1.dwg 6/6/2005 3:27:26 PM EDT

SOUTHWEST CORNER OF THE
NORTHEAST 1/4, SECTION 4,
TOWNSHIP 52S, RANGE 41E MIAMI GARDENS (2-96)

By: *Thomas Brownell*

MIAMI-DADE COUNTY PUBLIC SCHOOLS			E.R. BROWNELL & ASSOC., INC.	
			CONSULTING ENGINEERS	
			LAND SURVEYORS	
			3152 Coral Way	
			Miami, Florida, 33145	
			305.446.3511	
			305.444.2034	
hk. by: TB	Draw By: JS	Date: 06/06/05		
sheet 1 of 2	Job #: 5860-AH2	Scale: 1" = 120'	Sketch No.: SM-1808	