

Office of School Facilities
Rose Diamond, Chief Facilities Officer

SUBJECT: AUTHORIZATION TO DEDICATE LAND TO MIAMI-DADE COUNTY FOR A RIGHT-OF-WAY ADJACENT TO CYPRESS ELEMENTARY SCHOOL, LOCATED AT 5400 SW 112 COURT

COMMITTEE: FACILITIES AND CONSTRUCTION REFORM

The District is presently constructing a bus drop-off at Cypress Elementary School, located at 5400 SW 112 Court. The project requires the improvement of a portion of SW 112 Court, as well as a portion of the adjacent school site. As a result, Miami-Dade County (County) has requested that the District dedicate that portion of the Board-owned property for use as public right-of-way (see location map).

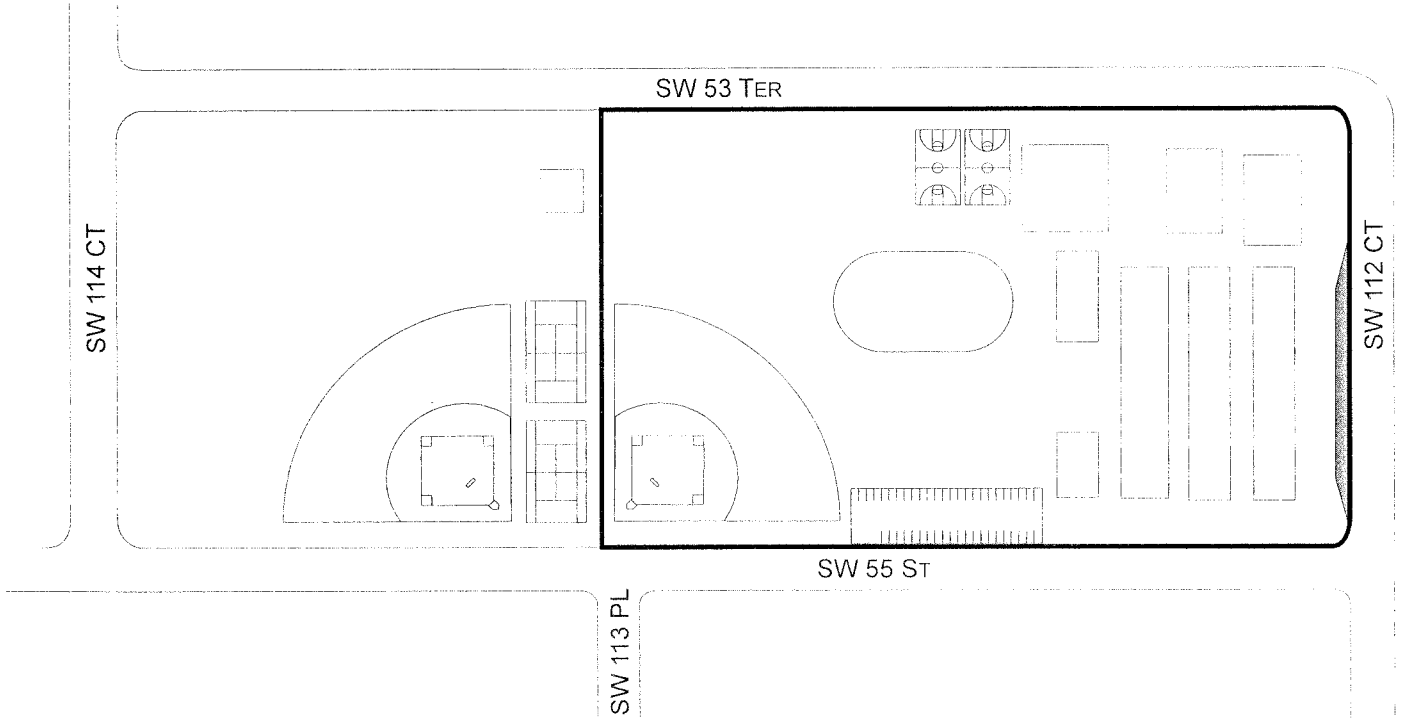
The land to be dedicated to Miami-Dade County totals 2,348 square feet, or 0.05 acres, more or less, and is more fully described in Exhibit "A".

The right-of-way document will be reviewed by the School Board Attorney's Office and the Office of Risk and Benefits Management prior to execution. The School Principal, the Office of School Facilities, the Division of Safety and Emergency Management, and Facilities Operations also concur with the proposed dedication of the right-of-way.

RECOMMENDED: That The School Board of Miami-Dade County, Florida, authorize the Chair and Secretary to execute the necessary documents to dedicate land to Miami-Dade County for a right-of-way adjacent to Cypress Elementary School.

AB:rr

LOCATION MAP

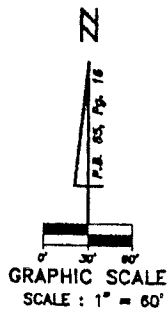
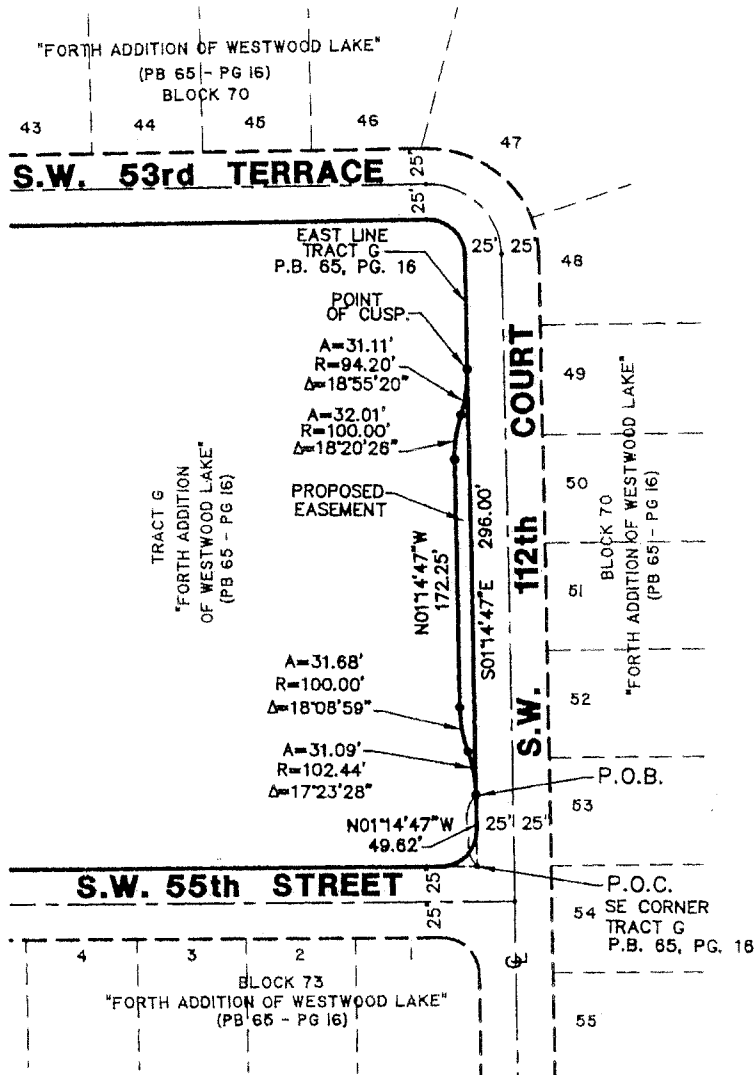


LEGEND
Proposed Sidewalk Conveyance
(NOT TO SCALE)



EXHIBIT 'A'

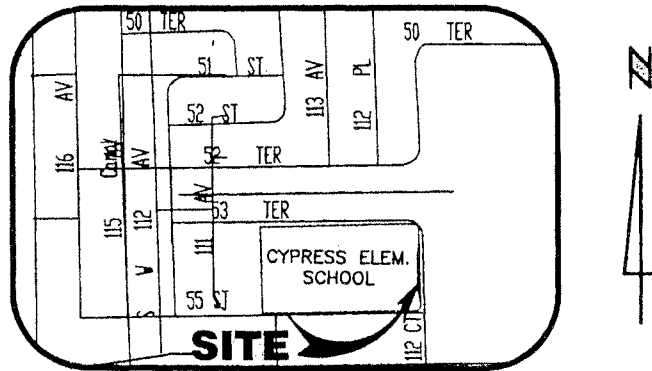
**SKETCH TO ACCOMPANY LEGAL DESCRIPTION
 PROPOSED SIDEWALK CONVEYANCE
 FOR BUS DROP-OFF IN
 CYPRESS ELEMENTARY SCHOOL
 5400 S.W. 112th COURT, MIAMI-DADE COUNTY, FLORIDA
 for
 MIAMI-DADE COUNTY PUBLIC SCHOOLS**



LEGEND

- P.O.B. Point of Beginning
- P.O.C. Point of Commence
- P.B. Plat Book
- PG. Page
- SEC. Section
- TWP. Township
- RGE. Range
- ☉ Centerline
- R/W Right-of-Way
- COR Corner

**SKETCH TO ACCOMPANY LEGAL DESCRIPTION
 PROPOSED SIDEWALK EASEMENT
 FOR BUS DROP-OFF IN
 CYPRESS ELEMENTARY SCHOOL
 5400 S.W. 112th COURT, MIAMI-DADE COUNTY, FLORIDA
 for
 MIAMI-DADE COUNTY PUBLIC SCHOOLS**



LOCATION SKETCH
 NOT TO SCALE

LEGAL DESCRIPTION:

An easement over a strip of land being a portion of Tract G, "FORTH ADDITION OF WESWOOD LAKE", according to the plat thereof, as recorded in Plat Book 65, Page 16, of the Public Records of Miami-Dade County, Florida, lying and being in the S.W. 1/4 of Section 19, Township 54 South, Range 40 East, Miami-Dade County, Florida more particularly described by metes and bounds as follows:

Commence at the Southeast corner of said Tract G, thence N01°14' 47"W, along the East line of said Tract G, also being the West Right-of-Way line of S.W. 112th Court, a distance of 49.62 feet to the Point of Beginning of the hereinafter described strip of land, which is also a point of curvature of a circular curve concave to the Southwest; thence Northwesterly along said curve having a radius of 102.44 feet, a central angle of 17°23'28" for an arc distance of 31.09 feet to a point of reverse curvature of a circular curve concave to the Northeast; thence Northwesterly along said curve having a radius of 100.00 feet, a central angle of 18°08'59" for an arc distance of 31.68 feet to a point of tangency; thence N01°14'47"W, 172.25 feet to a point of curvature of a circular curve concave to the Southeast; thence Northeasterly along said curve having a radius of 100.00 feet, a central angle of 18°20'26" for an arc distance of 32.01 feet to a point of reverse curvature of a curve concave to the Northwest; thence Northeasterly along said curve having a radius of 94.20 feet, a central angle of 18°55'20" for an arc distance of 31.11 feet to the Point of Cusp; thence S01°14'47"E along the East line of said Tract G, that is also the West Right-of-Way line of S.W. 112th Court, a distance of 296.00 feet to the Point of Beginning.

Said strip of land lying and being in Miami-Dade County, Florida and containing 2,348 square feet or 0.05 acres more or less by calculations.