

Office of School Facilities
Rose Diamond, Chief Facilities Officer

SUBJECT: AUTHORIZATION TO ENTER INTO A GRANT OF EASEMENT AGREEMENT WITH FLORIDA POWER AND LIGHT COMPANY, FOR SOUTHWEST MIAMI SENIOR HIGH SCHOOL, LOCATED AT 8855 SW 50 TERRACE

COMMITTEE: FACILITIES AND CONSTRUCTION REFORM

In order to meet the electrical service requirements associated with an addition at Southwest Miami Senior High School, Florida Power & Light Company (FP&L) has requested an easement of approximately 10' x 308' (for a total of approximately 3,080 square feet, or .07 acres more or less), be granted. This area is legally described in Exhibit "A", attached hereto.

The Grant of Easement Agreement (Agreement) will be reviewed and approved by the School Board Attorney's Office and the Office of Risk and Benefits Management prior to execution. The school principal and Regional Superintendent of Regional Center V recommend approval of the Agreement. The Office of School Facilities, Construction; Division of Safety and Emergency Management; Facilities Operations, Maintenance; and Department of Advanced Planning also concur with the proposed Agreement.

RECOMMENDED: That The School Board of Miami-Dade County, Florida, authorize the Chair and Secretary to execute a Grant of Easement Agreement with Florida Power and Light Company for Southwest Miami Senior High School, as described above.

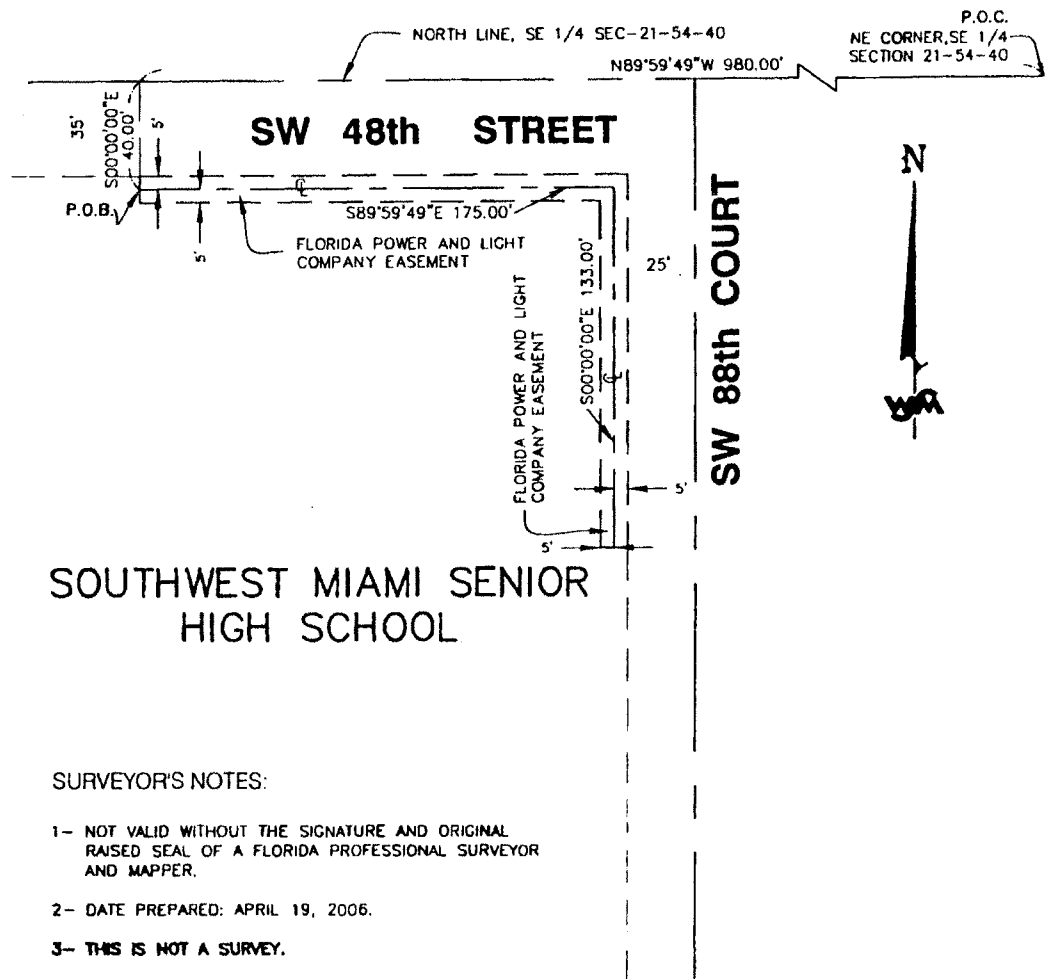
AB:rr



EXHIBIT A

LEGAL DESCRIPTION FOR A 10' FLORIDA POWER & LIGHT COMPANY EASEMENT:

PORTIONS OF THE SOUTHEAST 1/4 OF SECTION 21, TOWNSHIP 54 SOUTH, RANGE 40 EAST, MIAMI-DADE COUNTY, FLORIDA, BEING MORE PARTICULARLY DESCRIBED AS FOLLOWS. COMMENCE AT THE NORTHEAST CORNER OF THE SOUTHEAST 1/4 OF SAID SECTION 21, FOR 980.00 FEET, THENCE S00°00'00"E FOR 40.00 FEET TO A POINT OF BEGINNING OF A 10' WIDE EASEMENT LYING 5 FEET ON EITHER SIDE OF THE FOLLOWING DESCRIBED LINE, THENCE S89°59'49"E FOR 175.00 FEET, THENCE S00°00'00"E FOR 133.00 FEET TO THE END OF THIS EASEMENT.



SOUTHWEST MIAMI SENIOR HIGH SCHOOL

SURVEYOR'S NOTES:

- 1- NOT VALID WITHOUT THE SIGNATURE AND ORIGINAL RAISED SEAL OF A FLORIDA PROFESSIONAL SURVEYOR AND MAPPER.
- 2- DATE PREPARED: APRIL 19, 2006.
- 3- THIS IS NOT A SURVEY.

SCALE: 1" = 50'

WEIDENER SURVEYING & MAPPING, P.A.
FLORIDA CERTIFICATION No. LB 4207
SAMUEL M. FISCHBEIN PLS No. 3587

SKETCH TO ACCOMPANY LEGAL DESCRIPTION

SOUTHWEST MIAMI SENIOR HIGH SCHOOL
MIAMI, FLORIDA
PROJECT NUM. 1778V
PAGES 1 OF 1