

Office of School Facilities  
Rose Diamond, Chief Facilities Officer

**SUBJECT: AUTHORIZATION TO GRANT A WATER LINE EASEMENT  
LOCATED AT FLAMINGO ELEMENTARY SCHOOL SITE AT 701  
EAST 33 STREET, HIALEAH, FLORIDA IN FAVOR OF CITY OF  
HIALEAH  
PROJECT NO. 00138200**

**COMMITTEE: FACILITIES AND CONSTRUCTION REFORM**

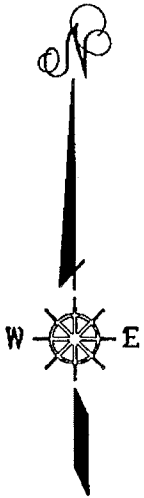
In order to maintain a water line easement constructed to provide adequate fire protection and water services to the Flamingo Elementary School site, the City of Hialeah has requested that a 10-foot wide water line easement be granted by the district.

The 10-foot wide water line easement described will cover the area of the water line installations at the 13-acre school site. This area is legally described in Exhibit "A", attached hereto.

The Grant of Easement will be reviewed and approved by the School Board's Attorneys Office prior to execution. In addition, the proposed easement has been reviewed and recommended by the Office of School Facilities. Public utility facilities constructed on Board-owned property will be conveyed, with appropriate easements, to the City of Hialeah for future maintenance and operations.

**RECOMMENDED:** That The School Board of Miami-Dade County, Florida, authorize the execution of the water line easement at the Flamingo Elementary School site. Project No. 00138200, in favor of the City of Hialeah.

LML

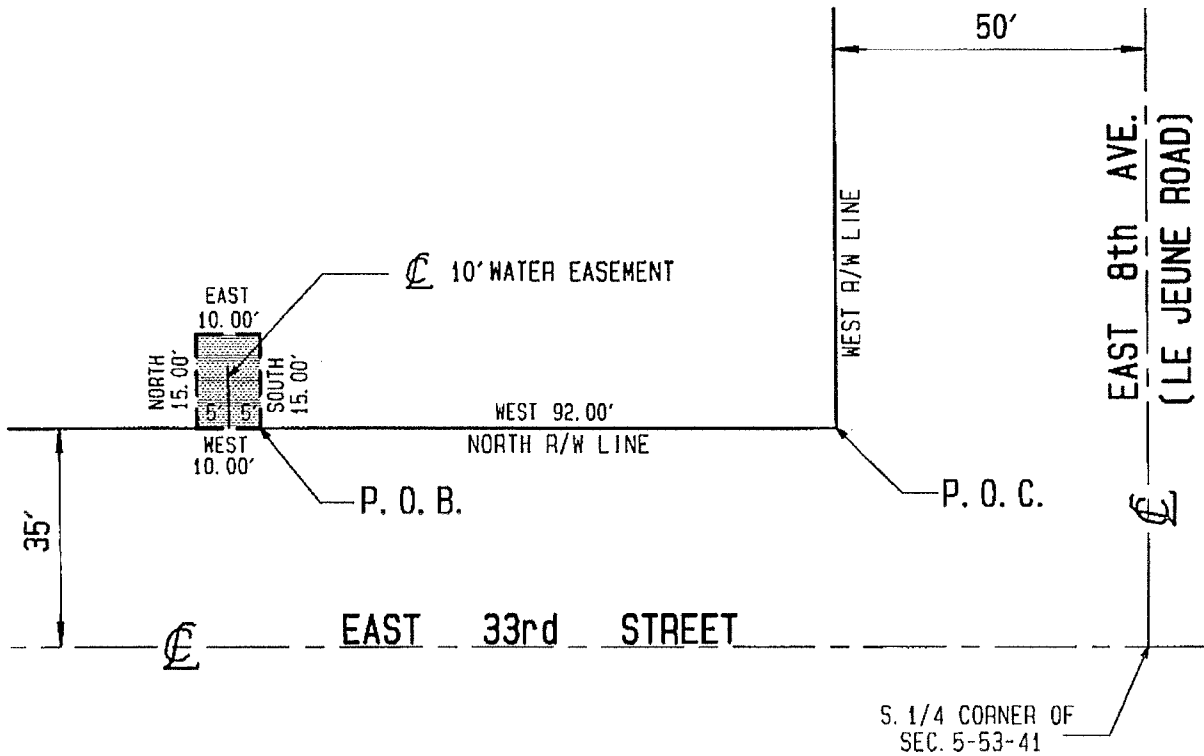


### LEGAL DESCRIPTION OF EASEMENT

A strip of land 10.00 feet wide, being a portion of the SE.1/4, of the SE.1/4, of the SW.1/4 of Section 5, Township 53 South, Range 41 East, City of Hialeah, Florida, being more particularly described as follows: Commencing at the intersection of the North Right of Way line of East 33rd Street, and the West Right of Way line of East 8th Avenue (Le Jeune Road); thence run West along the North Right of Way line of East 33rd Street for 92.00 feet to the Point of Beginning; thence continue along the last described course for 10.00 feet; thence North 15.00 feet; thence East 10.00 feet; thence South 15.00 feet to the Point of Beginning.

Lying and being in the City of Hialeah, Florida, and containing 150.00 square feet.

### SKETCH OF EASEMENT SCALE: 1" = 30'



PREPARED BY:

**J. F. LOPEZ & ASSOCIATES, INC.**

CONSULTING LAND SURVEYORS AND PLANNERS

CERTIFICATE N° LB. 3192, STATE OF FLORIDA

7900 NW. 155th STREET, SUITE 104,

MIAMI LAKES, FLORIDA, 33016

Ph: (305) 828-2725 FAX: 828-3589



MARCH 10, 2006  
ORDER NO: 060304  
CAD FILE: 060304A

BY: *Jose Lopez*  
JOSE F. LOPEZ, P. S. M.  
Professional Surveyor & Mapper  
N° 3086, State of Florida