

Office of School Facilities
Rose Diamond, Chief Facilities Officer

**SUBJECT: AUTHORIZATION TO ENTER INTO A GRANT OF EASEMENT
AGREEMENT WITH FLORIDA POWER AND LIGHT COMPANY,
FOR OJUS ELEMENTARY SCHOOL, LOCATED AT 18600 W.
DIXIE HIGHWAY, NORTH MIAMI BEACH**

COMMITTEE: FACILITIES AND CONSTRUCTION REFORM

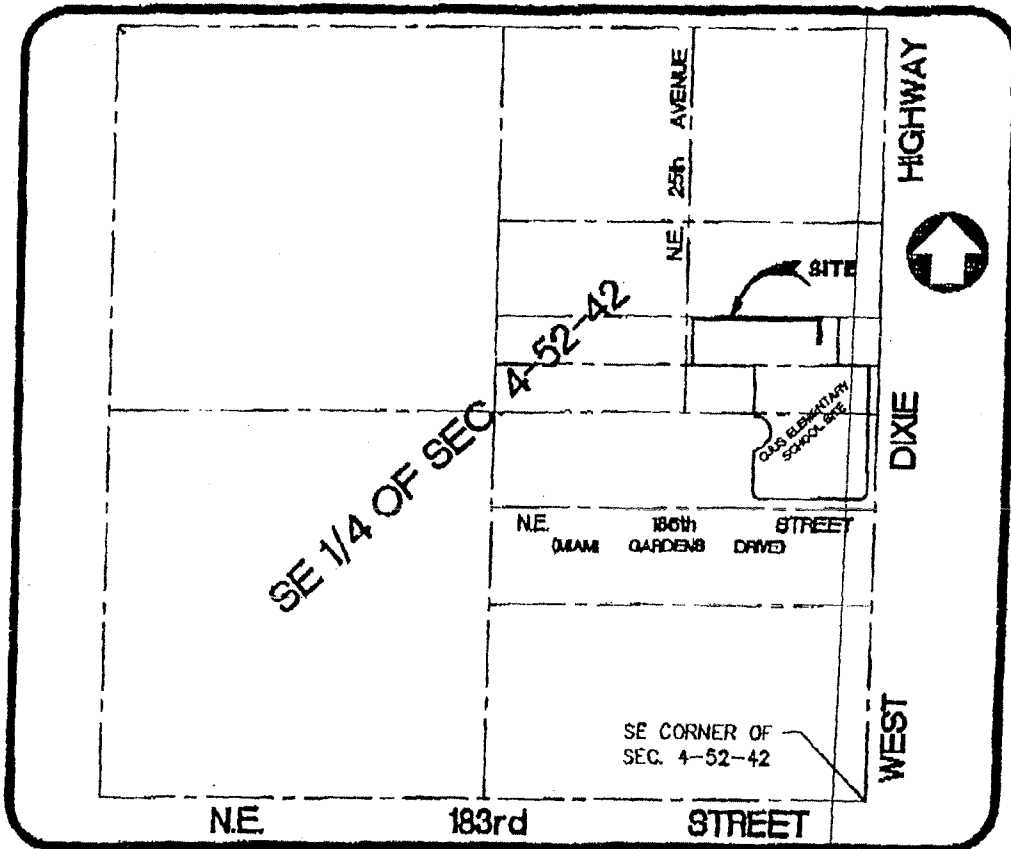
In order to meet the electrical service requirements associated with an addition at Ojus Elementary School, Florida Power & Light Company (FP&L) has requested an easement of approximately 10' x 520' (for a total of approximately 5,200 square feet, or .12 acre, more or less), be granted. This area is legally described in Exhibit "A", attached hereto.

The Grant of Easement Agreement (Agreement) will be reviewed and approved by the School Board Attorney's Office and the Office of Risk and Benefits Management prior to execution. The School Principal and Regional Superintendent of Regional Center II recommend approval of the Agreement as does the Office of School Facilities, Construction; Division of Safety and Emergency Management; Facilities Operations, Maintenance; and Department of Advanced Planning also concur with the proposed Agreement.

RECOMMENDED: That The School Board of Miami-Dade County, Florida, authorize the Chair and Secretary to execute a Grant of Easement Agreement with Florida Power and Light Company for Ojus Elementary School, as described above.

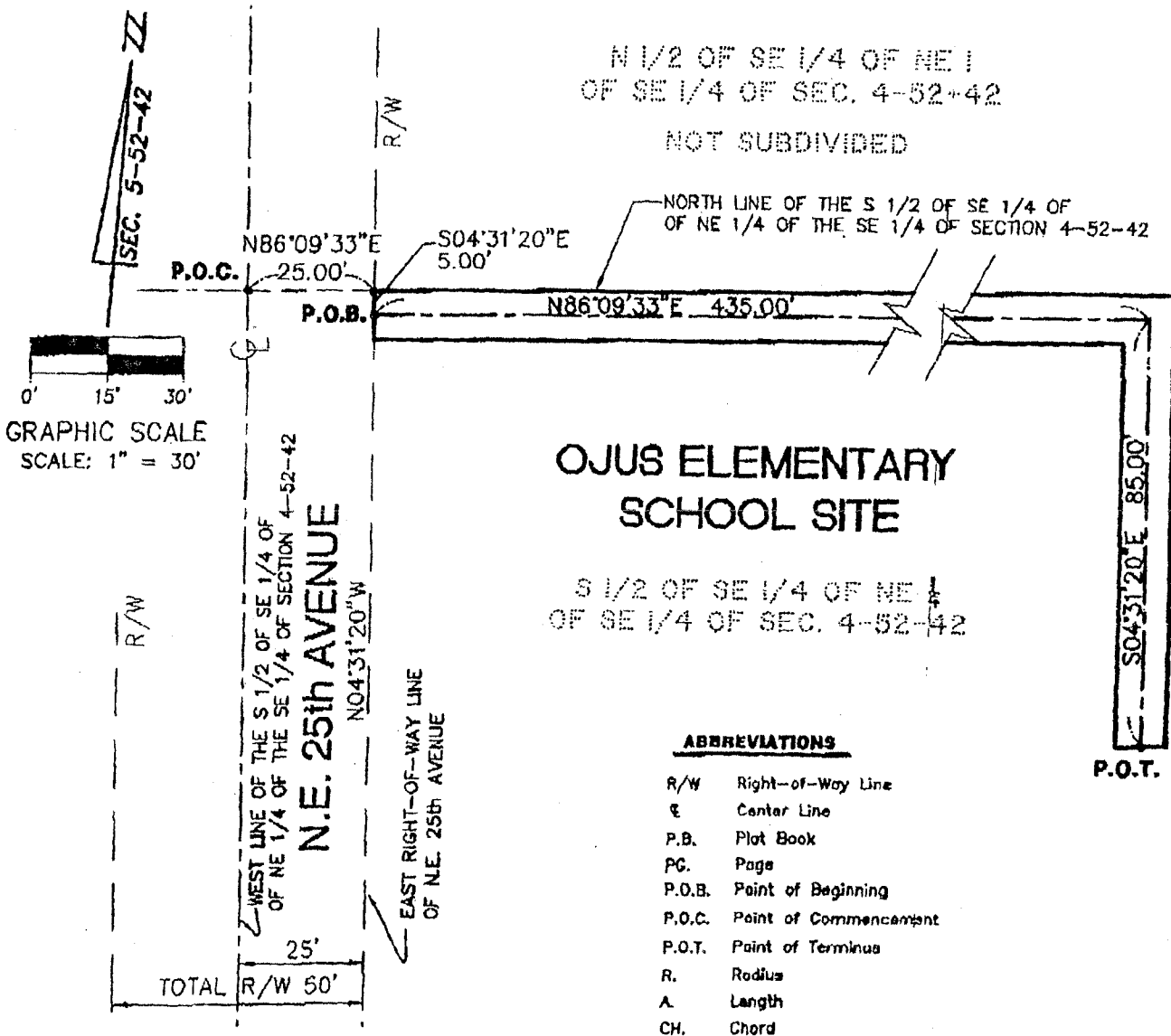
AB:rr

SKETCH TO ACCOMPANY LEGAL DESCRIPTION
of
A 10 Foot F.P.L. Easement
of
A Portion of OJUS ELEMENTARY SCHOOL Loc. # 4061
18600 WEST DIXIE HIGHWAY, MIAMI-DADE COUNTY, FLORIDA.
for
MIAMI-DADE COUNTY PUBLIC SCHOOLS



LOCATION SKETCH
NOT TO SCALE

SKETCH TO ACCOMPANY LEGAL DESCRIPTION
of
A 10 Foot F.P.L. Easement
of
A Portion of OJUS ELEMENTARY SCHOOL Loc. # 4061
18600 WEST DIXIE HIGHWAY, MIAMI-DADE COUNTY, FLORIDA.
for
MIAMI-DADE COUNTY PUBLIC SCHOOLS



SKETCH TO ACCOMPANY LEGAL DESCRIPTION
of
A 10 Foot F.P.L. Easement
of
A Portion of OJUS ELEMENTARY SCHOOL Loc. # 4061
18600 WEST DIXIE HIGHWAY, MIAMI-DADE COUNTY, FLORIDA.
for
MIAMI-DADE COUNTY PUBLIC SCHOOLS

1. 10 FOOT F.P.L. EASEMENT LEGAL DESCRIPTION:

An easement over strip of land 10 foot wide lying and being in S 1/2 of the SE 1/4 of the NE 1/4 of the SE 1/4 of Section 4, Township 52 South, Range 42 East, lying and being in Miami-Dade County, Florida, which center line is more particularly described as follows:

Commence at point of intersection of the North and West line of the S 1/2 of the SE 1/4 of the NE 1/4 of the SE 1/4 of Section 4, Township 52 South, Range 42 East, Miami-Dade County, Florida; thence run N86°09'33"E, for a distance of 25.00 feet to a point being on the East Right-of-Way line of S.W. 25th Avenue (50' Right-of-Way); thence S04°31'20"E, along the said Right-of-Way line, for a distance of 5.00 feet to the Point of Beginning; thence run N86°09'33"E, along a line 5 feet South of and parallel with the North line of the S 1/2 of the SE 1/4 of the NE 1/4 of the SE 1/4 of said Section 4, for a distance of 435.00 feet; thence run S04°31'20"E for a distance of 85.00 feet to the Point of Terminus. The side lines of said Easement to be shortened or prolonged to meet at angle points and the boundaries of said parcel.

Containing 5,200 Square Feet by calculations.

2. SOURCES OF DATA:

The Legal Description of the subject property was generated from information provided by the client. In addition, the following sources of data were used to the extent required to complete this document in a defensible matter, that is to say:

- Section 4, Township 52 South, Range 42 East, recorded in Miami-Dade County, Florida.
- North arrow direction are based on assumed value as per Section 4, Township 52 South, Range 42 East, Miami-Dade County, Florida.