

Office of School Facilities
Rose Diamond, Chief Facilities Officer

SUBJECT: AUTHORIZATION TO DEDICATE LAND TO MIAMI DADE COUNTY FOR USE AS PUBLIC RIGHT-OF-WAY ADJACENT TO MIAMI DOUGLAS MACARTHUR NORTH SENIOR HIGH SCHOOL, LOCATED AT 13835 NW 97 AVENUE, HIALEAH

COMMITTEE: FACILITIES AND CONSTRUCTION REFORM

The City of Hialeah (City) has advised that it intends to commence construction of improvements to NW 97 Avenue, between NW 138 Street and NW 170 Street, in the near future. To facilitate this work, the City has requested that the District dedicate a 10-foot portion of the Board-owned property adjacent to NW 97 Avenue, at Miami Douglas MacArthur North Senior High School, located at 13835 NW 97 Avenue (see location map). Because NW 97 Avenue is a Miami-Dade County (County) road, the proposed dedication will be made to the County, rather than the City.

The land to be dedicated totals 5,453 square feet, or .13 acre more or less, and is more fully described in Exhibit "A".

The right-of-way document will be reviewed by the School Board Attorney's Office and the Office of Risk and Benefits Management prior to execution. The School Principal, the Office of School Facilities Construction, the Division of Safety and Emergency Management, and Facilities Operations, Maintenance also concur with the proposed dedication of the right-of-way.

RECOMMENDED: That The School Board of Miami-Dade County, Florida, authorize the Chair and Secretary to execute the necessary documents to dedicate land to Miami-Dade County for use as public right-of-way adjacent to Miami Douglas MacArthur North Senior High School.

AB:rr

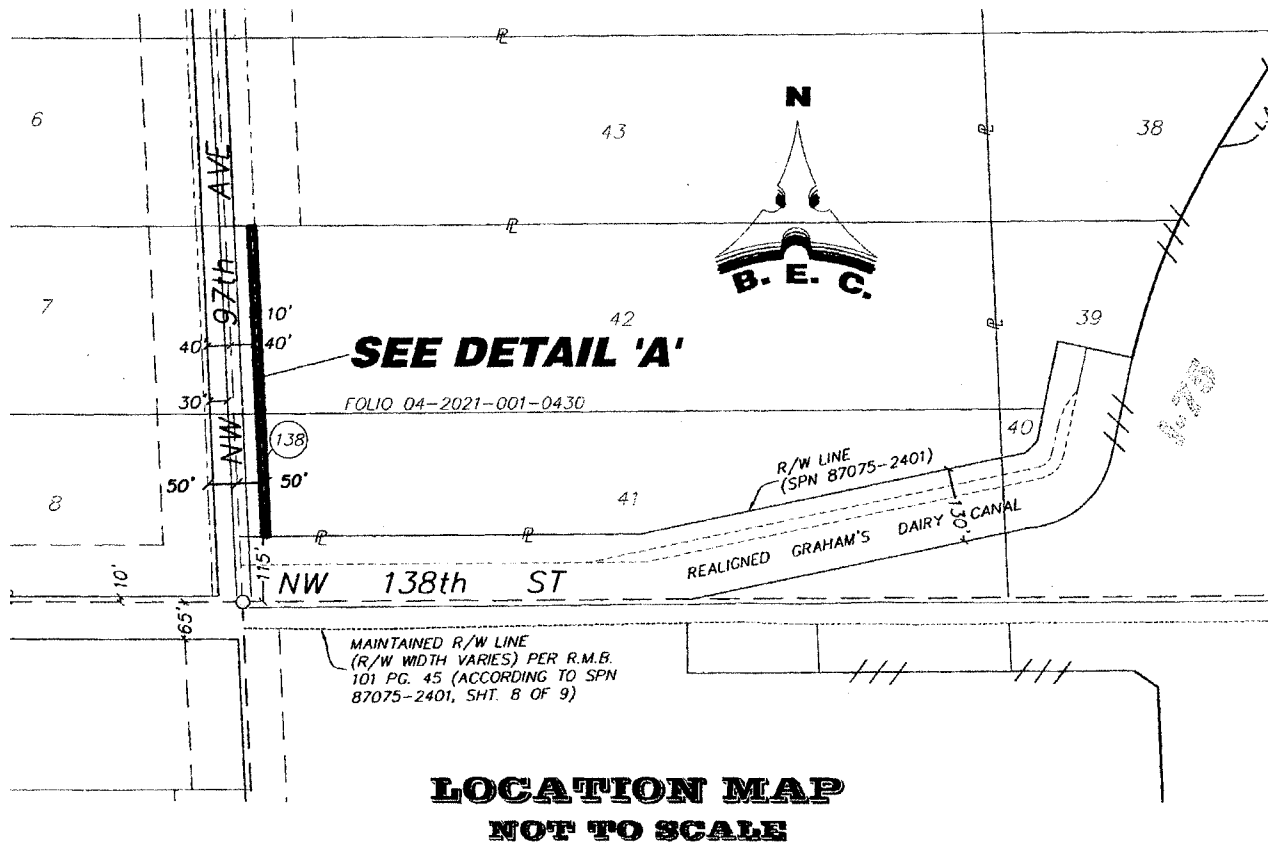
PARCEL DIAGRAM

THIS IS NOT A SURVEY

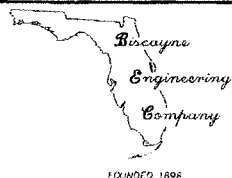
LEGAL DESCRIPTION PARCEL 138
(Parent Tract Folio: 04-2021-001-0430)

That portion of Tracts 41, and 42, in the Southwest one-quarter (S.W. 1/4) of Section 21, Township 52 South, Range 40 East, FLORIDA FRUIT LANDS COMPANY'S SUBDIVISION No. 1, according to the Plot thereof, as recorded in Plat Book 2, at Page 17, of the Public Records of Miami-Dade County, Florida, lying within the East 10.00 feet of the West 50.00 feet of the Southwest one-quarter (S.W. 1/4) of said Section 21, Township 52 South, Range 40 East,

Excepting therefrom any portion of the above-described lands lying within the South 115 feet of the Southwest one-quarter (S.W. 1/4) of said Section 21.



DATE: 09-21-06	ORDER No. N/A	DRAWING: N/A	BY: WJR
FOR: N/A	FB No. N/A	SHEET: 1 OF 2	



BISCAYNE ENGINEERING COMPANY, INC.

Consulting Engineers • Planners • Surveyors

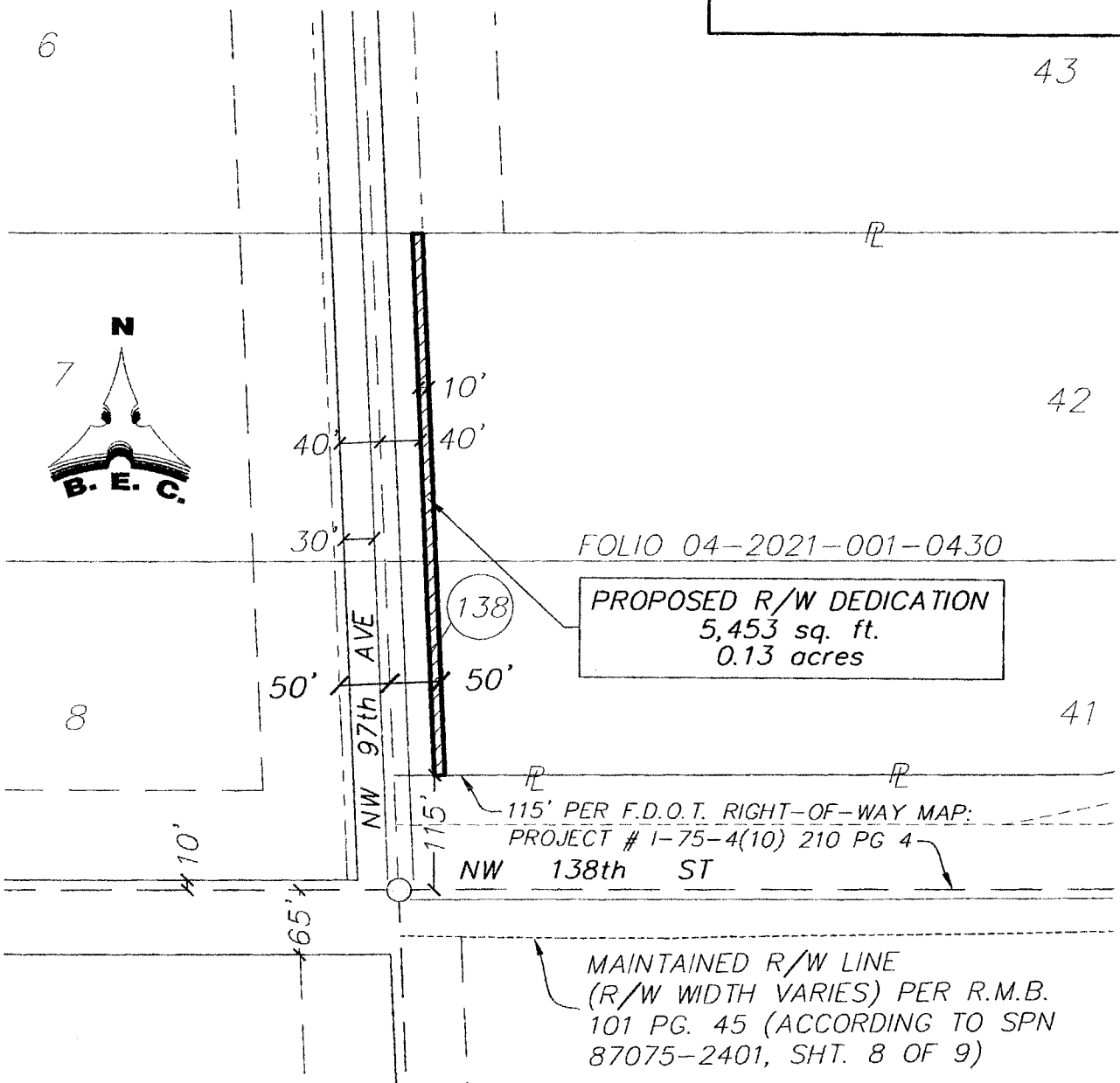
MIAMI
529 WEST FLAGLER STREET
FLORIDA, 33130

PH: (305) 324-7671
FAX: (305) 324-1700

WEB SITE: www.biscayneengineering.com
E-MAIL: info@biscayneengineering.com

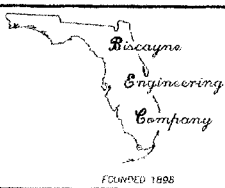
PARCEL DIAGRAM

THIS IS NOT A SURVEY



DETAIL 'A'
NOT TO SCALE

DATE: 09-21-06	ORDER No. 03-77602	DRAWING: N/A	BY: WJR
FOR: N/A	FB No. N/A	SHEET: 2 OF 2	



BISCAYNE ENGINEERING COMPANY, INC.

Consulting Engineers • Planners • Surveyors

MIAMI
529 WEST FLAGLER STREET
FLORIDA 33130

PH: (305) 324-2671
FAX: (305) 324-1700

WEB SITE: www.biscayneengineering.com
E-MAIL: info@biscayneengineering.com