

Office of School Facilities
Rose Diamond, Chief Facilities Officer

**SUBJECT: AUTHORIZATION TO GRANT A WATER LINE EASEMENT
LOCATED AT CUTLER RIDGE ELEMENTARY SCHOOL SITE AT
20210 CORAL SEA ROAD, MIAMI, FLORIDA IN FAVOR OF MIAMI-
DADE COUNTY
PROJECT NO. 00139600**

COMMITTEE: FACILITIES AND CONSTRUCTION REFORM

In order to maintain a water line easement constructed to provide adequate fire protection and water services to the Cutler Ridge Elementary School site, Miami-Dade County has requested that a 12-foot wide water line easement be granted by the district.

The 12-foot wide water line easement described will cover the area of the water line installations at the 12-acre school site. This area is legally described in Exhibit "A", attached hereto.

The Grant of Easement will be reviewed and approved by the School Board's Attorneys Office prior to execution. In addition, the proposed easement has been reviewed and recommended by the Office of School Facilities. Public utility facilities constructed on Board-owned property will be conveyed, with appropriate easements, to Miami-Dade County for future maintenance and operations.

RECOMMENDED: That The School Board of Miami-Dade County, Florida, authorize the execution of the water line easement at the Cutler Ridge Elementary School site. Project No. 00139600, in favor of Miami-Dade County.

LML

LEGAL DESCRIPTION OF EASEMENT

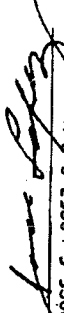
A portion of the NE 1/4 of Section 8, Township 56 South, Range 40 East, Miami-Dade County, Florida, being a strip of land 12.00 feet wide, lying 6.00 feet on each side of and contiguous with the following described center line: Commencing at the point of intersection of Bahia Drive and Coral Sea Road, as shown on the Plat of "CUTLER RIDGE SECTION 5", as recorded in Plat Book 60, at Page 66, of the Public Records of Miami-Dade County, Florida, thence N16°22'38"W along the chord of a circular curve running along the center line of Coral Sea Road, being concave to the Northeast, having a radius of 1843.51 feet, a central angle of 11°42'27" for 376.04 feet; thence S80°48'04"W 30.01 feet to the Point of Beginning, said point lying on the West Right of Way line of Coral Sea Road; thence S80°48'04"W 201.00 feet; thence N09°-11'56"W 30.00 feet; to the Point of Termination.

Lying and being in Miami-Dade County, Florida, and containing 2,844 square feet.

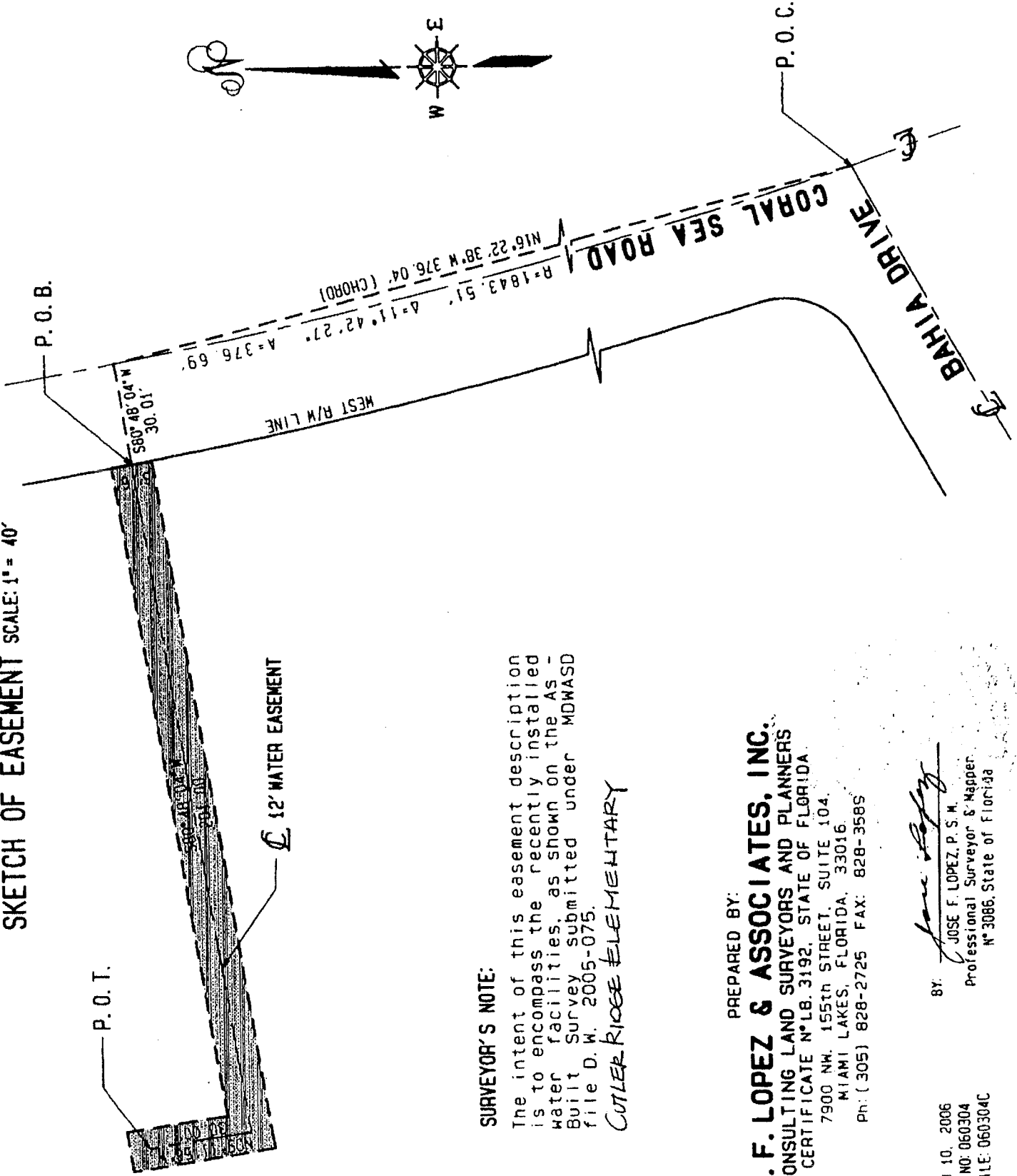
SURVEYOR'S NOTES:

The side lines of this easement are to be shortened or lengthened so as to create a continuous strip of land.

MARCH 10, 2006
 ORDER NO: 060304
 CAD FILE: 060304C

BY: 
 JOSE F. LOPEZ, P. S. M.
 Professional Surveyor & Mapper
 No. 3086, State of Florida

SKETCH OF EASEMENT SCALE: 1" = 40'



SURVEYOR'S NOTE:

The intent of this easement description is to encompass the recently installed water facilities, as shown on the AS - Built Survey submitted under MDWASD file D.W. 2005-075.

COTLER RIDGE ELEMENTARY

PREPARED BY:
J. F. LOPEZ & ASSOCIATES, INC.
 CONSULTING LAND SURVEYORS AND PLANNERS
 CERTIFICATE N° LB. 3192, STATE OF FLORIDA

7900 NW. 155th STREET, SUITE 104.
 MIAMI LAKES, FLORIDA, 33016.
 PH: (305) 828-2725 FAX: 828-3585



MARCH 10, 2006
 ORDER NO: 060304
 CAD FILE: 060304C

BY: *Jose Lopez*
 JOSE F. LOPEZ, P. S. M.
 Professional Surveyor & Mapper
 N° 3086, State of Florida