

Office of School Facilities
Jaime G. Torrens, Temporary Chief Facilities Officer

**SUBJECT: AUTHORIZATION TO GRANT A WATER LINE EASEMENT
LOCATED AT CORAL TERRACE ELEMENTARY SCHOOL SITE
AT 6801 SW 24 STREET, MIAMI, FLORIDA IN FAVOR OF
MIAMI-DADE COUNTY
PROJECT NO. 00177900**

COMMITTEE: FACILITIES AND CONSTRUCTION REFORM

**LINK TO
STRATEGIC PLAN: IMPROVE CONSTRUCTION SERVICES**

In order to maintain a water line easement constructed to provide adequate fire protection and water services to the Coral Terrace Elementary School site, Miami-Dade County has requested that a 12-foot wide water line easement be granted by the District.

The 12-foot wide water line easement described will cover the area of the water line installations at the 5-acre school site. This area is legally described in Exhibit "A", attached hereto.

The Grant of Easement will be reviewed and approved by the School Board Attorney's Office prior to execution. In addition, the proposed easement has been reviewed and recommended by the Office of School Facilities. Public utility facilities constructed on Board-owned property will be conveyed, with appropriate easements, to Miami-Dade County for future maintenance and operations.

RECOMMENDED: That The School Board of Miami-Dade County, Florida, authorize the execution of the water line easement at the Coral Terrace Elementary School site. Project No. 00177900, in favor of Miami-Dade County.

LML

**MDWSD WATER LINE UTILITY EASEMENT
(LEGAL DESCRIPTION & SKETCH OF DESCRIPTION)
PAGE 2 OF 3**

Page 2 of 3
Survey Number: 8378 E

LEGAL DESCRIPTION:

MDWSD WATER LINE UTILITY EASEMENT:

A 12 feet strip of land, six (6) feet along each side of a fire line built in Phase I of ER # DW2006-117, more particularly described as follows:

Commence at the SE corner of the South 450.4 feet of the West 486 feet of the East 967.15 feet, less the South 50 feet thereof, of the Southeast 1/4 of the Southeast 1/4 of Section 11, Township 54 South, Range 40 East, Miami-Dade County, Florida, said Point being in the North Right of Way line of SW 24th Street (Coral Way); thence run N89°54'46"W along said North Right of Way line of SW 24th Street (Coral Way) for a distance of 201.40 feet to the Point of Beginning of this Easement; thence continue N89°54'46"W along said line for 12 feet; thence N00°46'42"W for 31.20 feet; thence S89°54'46"E for 127.15 feet; thence run North for 9.50 feet; thence East for 12.00 feet; thence South for 9.50 feet; thence S89°54'46"E for 22.30 feet to a point on the very East line of this Phase I Easement; thence S 01°11'41"E for 12.00 feet; thence N89°54'46"W for 149.62 feet; thence S00°46'42"E for 19.20 feet to the Point of Beginning.

Prepared by: 

Odalys C. Bello
Professional Surveyor & Mapper # 6169
State of Florida

Date: 09/10/2006

NOTE:

This Sketch and Description are not valid without the signature and original raised seal of a Florida Registered Land Surveyor and Mapper.

LEGEND & ABBREVIATIONS

P.O.C.= POINT OF COMMENCEMENT

P.O.B.= POINT OF BEGINNING

U.E.: UTILITY EASEMENT

**BELLO & BELLO
LAND SURVEYING CORP.**
LB # 7262
12230 S.W. 131st Avenue, Suite 201
Miami, Florida 33186
Tel: (305) 251-9606 Fax: (305) 251-6057

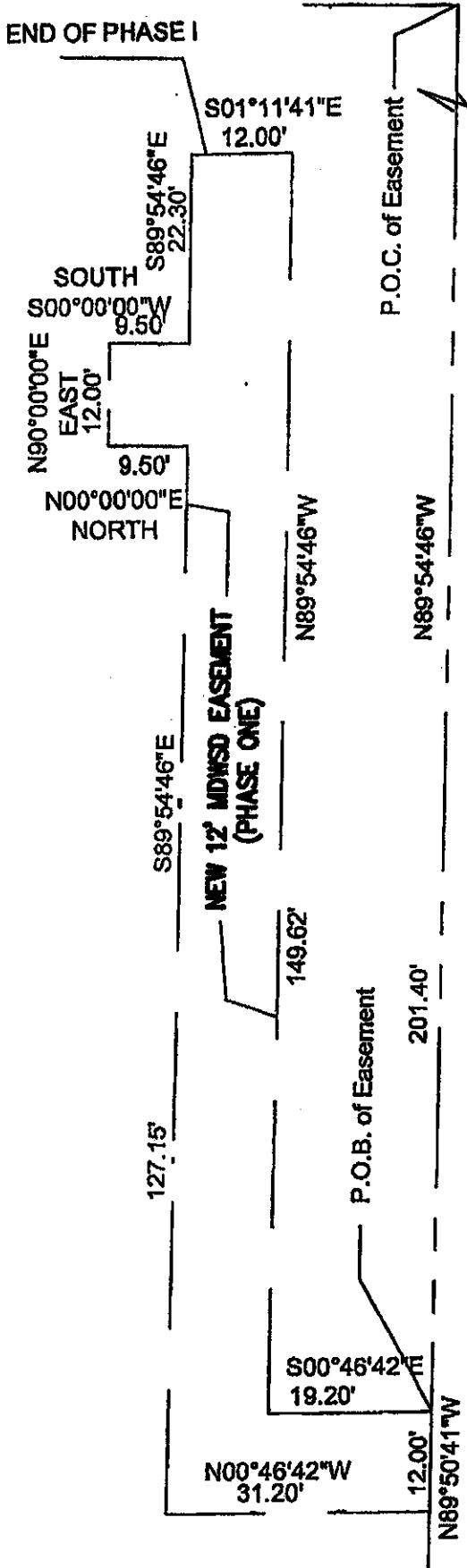
**MDWSD WATER LINE UTILITY EASEMENT
(LEGAL DESCRIPTION & SKETCH OF DESCRIPTION)**


PAGE 3 OF 3



Scale: 1" = 20'

Page 3 of 3
Survey Number: 8378 E



Prepared by: 
Odalys C. Bello
Professional Surveyor & Mapper # 6169
State of Florida

Date: 9/10/06

**BELLO & BELLO
LAND SURVEYING CORP.**
LB # 7262
12230 S.W. 131st Avenue, Suite 201
Miami, Florida 33186
Tel: (305) 251-9606 Fax: (305) 251-6057