

Office of School Facilities
Jaime G. Torrens, Temporary Chief Facilities Officer

**SUBJECT: AUTHORIZATION TO GRANT A WATER LINE EASEMENT
 LOCATED AT STATE SCHOOL Z-1 AT MIAMI HEIGHTS
 ELEMENTARY SCHOOL SITE AT 17661 SW 117 AVENUE,
 MIAMI, FLORIDA IN FAVOR OF MIAMI-DADE COUNTY
 PROJECT NO. A0637**

COMMITTEE: FACILITIES AND CONSTRUCTION REFORM

**LINK TO
STRATEGIC PLAN: IMPROVE CONSTRUCTION SERVICES**

In order to maintain a water line easement constructed to provide adequate fire protection and water services to the State School Z-1 at Miami Heights Elementary School site, Miami-Dade County has requested that a 12-foot wide water line easement be granted by the district.

The 12-foot wide water line easement described will cover the area of the water line installations at the 11-acre school site. This area is legally described in Exhibit "A", attached hereto.

The Grant of Easement will be reviewed and approved by the School Board's Attorneys Office prior to execution. In addition, the proposed easement has been reviewed and recommended by the Office of School Facilities. Public utility facilities constructed on Board-owned property will be conveyed, with appropriate easements, to Miami-Dade County for future maintenance and operations.

RECOMMENDED: That The School Board of Miami-Dade County, Florida, authorize the execution of the water line easement at the State School Z-1 at Miami Heights Elementary School site. Project No. A0637, in favor of Miami-Dade County.

LML

EXHIBIT "A"

LEGAL DESCRIPTION

PORTIONS OF THE SOUTHWEST ONE QUARTER OF SECTION 31, TOWNSHIP 55 SOUTH, RANGE 40 EAST, MIAMI-DADE COUNTY, FLORIDA. BEING MORE PARTICULARLY DESCRIBED AS FOLLOWS:


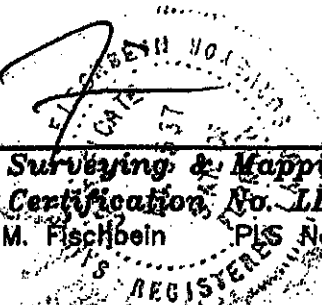
COMMENCE AT THE NORTHWEST CORNER OF THE SOUTHWEST ONE QUARTER OF SAID SECTION 31, THENCE N86°56'20"E FOR 35.00 FEET TO A POINT ON THE EAST RIGHT OF WAY LINE OF S.W. 117th AVENUE, THENCE S03°12'20"E ALONG SAID EAST RIGHT OF WAY LINE OF S.W. 117th AVENUE FOR 457.10 FEET TO THE POINT-OF-BEGINNING OF A PARCEL OF LAND HEREINAFTER DESCRIBED.

THENCE N86°47'40"E FOR 20.00 FEET, THENCE S03°12'20"E FOR 29.04 FEET, THENCE S86°47'40"W FOR 20.00 FEET TO A POINT ON THE AFORESAID EAST RIGHT OF WAY LINE OF S.W. 117th AVENUE, THENCE N03°12'20"W ALONG SAID EAST RIGHT OF WAY LINE FOR 29.04 FEET TO THE POINT-OF-BEGINNING.


CONTAINING 580.80 SQUARE FEET MORE OR LESS

NOTES:

1. THIS IS NOT A SURVEY.
2. THE INTENT OF THIS EASEMENT DESCRIPTION IS TO ENCOMPASS THE RECENTLY INSTALLED WATER MAINS AND RELATED FACILITIES, AS SHOWN ON THE AS-BUILT SURVEY UNDER WASD FILE DW 2003-174.
3. NOT VALID WITHOUT THE SIGNATURE AND ORIGINAL RAISED SEAL OF A FLORIDA PROFESSIONAL SURVEYOR AND MAPPER.
4. DATE PREPARED: 09 DECEMBER 2004.
5. PREPARED FOR THE COLLAGE COMPANIES.
6. BEARINGS ARE BASED ON THE WEST LINE OF THE SW $\frac{1}{4}$ OF SECTION 31-55-40 (S03°12'20"E).
7. REVISED FEBRUARY 14, 2007.



Weidener Surveying & Mapping, P.A.
Florida Certification No. LB 4207
Samuel M. Fischbein PLS No. 3587

PAGE 2 OF 3

CAD FILE NO. 17150 PROJECT NO. 17150.DWG SHEET 1 OF 2	WEIDENER SURVEYING AND MAPPING PA
	Jacksonville - Miami - Orlando - Tampa - Ft. Pierce  10416 N.W. 31st Terrace Miami, Florida 33172 (305) 599-6381

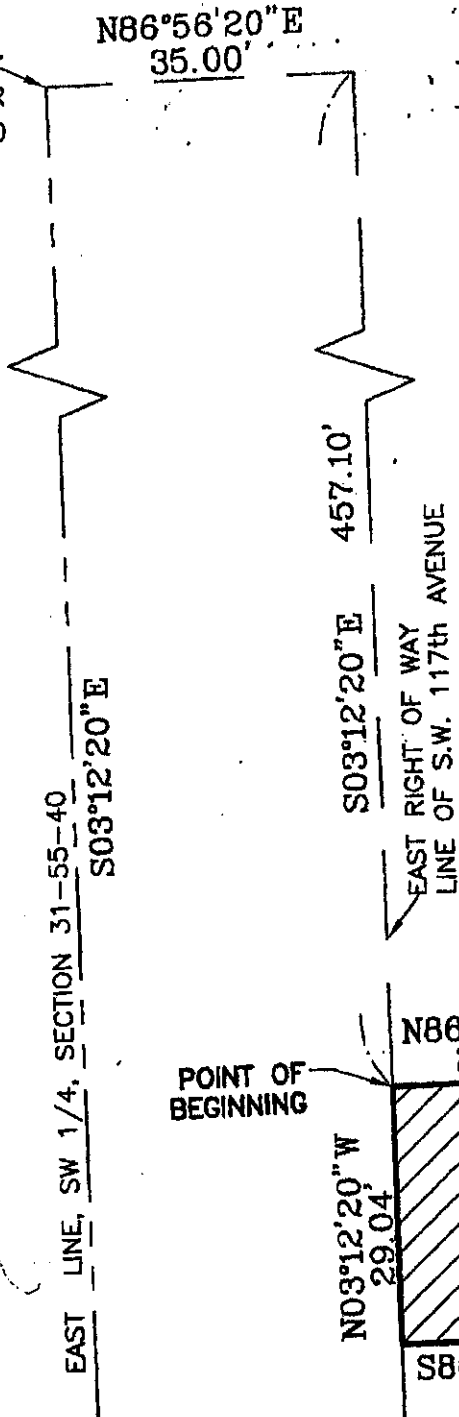
SKETCH TO ACCOMPANY LEGAL DESCRIPTION
for
WATER MAIN EASEMENT
at
MIAMI HEIGHTS ELEMENTARY SCHOOL
MIAMI-DADE COUNTY, FLORIDA

EXHIBIT "A"

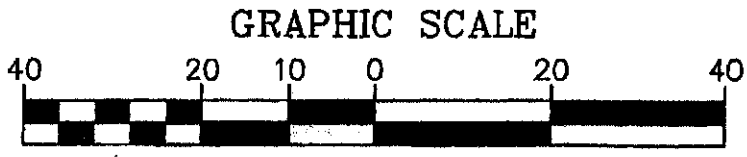
POINT OF COMMENCEMENT
N.W. CORNER
S.W. 1/4 SECTION 31-55-40



S.W. 117th AVENUE



MIAMI HEIGHTS ELEMENTARY SCHOOL



PAGE 3 OF 3

CADD FILE NO.
17150
PROJECT NO.
17150DWS
SHEET 2 OF 2

WEIDENER SURVEYING AND MAPPING PA

Jacksonville - Miami - Orlando - Tampa - Pensacola

WA 18 4287

10418 N.W. 31st Terrace
Miami, Florida 33172
(305) 599-8381

SKETCH TO ACCOMPANY LEGAL DESCRIPTION
for
WATER MAIN EASEMENT
at
MIAMI HEIGHTS ELEMENTARY SCHOOL
MIAMI-DADE COUNTY, FLORIDA