

Office of School Facilities
Jaime G. Torrens, Temporary Chief Facilities Officer

**SUBJECT: AUTHORIZATION TO GRANT A WATER LINE EASEMENT
LOCATED AT CAMPBELL DRIVE MIDDLE SCHOOL SITE AT
900 NE 23 AVENUE, HOMESTEAD, FLORIDA IN FAVOR OF
MIAMI-DADE COUNTY
PROJECT NO. A0709**

COMMITTEE: FACILITIES AND CONSTRUCTION REFORM

**LINK TO
STRATEGIC PLAN: IMPROVE CONSTRUCTION SERVICES**

In order to maintain a water line easement constructed to provide adequate fire protection and water services to the Campbell Drive Middle School site, Miami-Dade County has requested that a 12-foot wide water line easement be granted by the district.

The 12-foot wide water line easement described will cover the area of the water line installations at the 10-acre school site. This area is legally described in Exhibit "A", attached hereto.

The Grant of Easement will be reviewed and approved by the School Board's Attorneys Office prior to execution. In addition, the proposed easement has been reviewed and recommended by the Office of School Facilities. Public utility facilities constructed on Board-owned property will be conveyed, with appropriate easements, to Miami-Dade County for future maintenance and operations.

RECOMMENDED: That The School Board of Miami-Dade County, Florida, authorize the execution of the water line easement at the Campbell Drive Middle School site, Project No. A0709, in favor of Miami-Dade County.

LML



WEIDENER SURVEYING AND MAPPING PA

10418 N.W. 31st TERRACE

Miami, Florida 33172

(305) 599-6381

LEGAL DESCRIPTION:

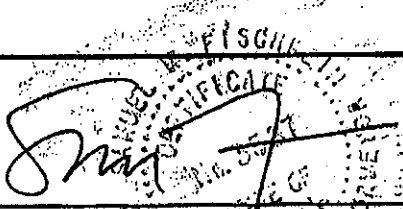
FOR 12' WATER MAIN EASEMENT AT CAMPBELL DRIVE ELEMENTARY SCHOOL.

PORTIONS OF THE SOUTHEAST 1/4 OF THE SOUTHEAST 1/4 OF SECTION 8, TOWNSHIP 57 SOUTH, RANGE 39 EAST BEING MORE PARTICULARLY DESCRIBED AS FOLLOWS.

COMMENCE AT THE SOUTHWEST CORNER OF THE EAST 1/2 OF THE SOUTHEAST 1/4 OF THE SOUTHEAST 1/4 OF SAID SECTION 8, THENCE N01°18'13"W ALONG THE WEST LINE OF THE EAST 1/2 OF THE SOUTHEAST 1/4 OF THE SOUTHEAST 1/4 OF SAID SECTION 8 FOR 75.00 FEET, THENCE N89°12'25"E ALONG THE NORTHERLY RIGHT OF WAY LINE OF CAMPBELL DRIVE (SW 312 STREET) FOR 6.00 FEET TO THE POINT OF BEGINNING OF A 12.00 FEET WIDE WATER MAIN EASEMENT LYING 6.00 FEET ON EACH SIDE OF THE FOLLOWING DESCRIBED LINE. THENCE N010°187'103"W FOR 1115.29 FEET TO THE END OF THIS EASEMENT.

SURVEYOR'S NOTES:

- 1- NOT VALID WITHOUT THE SIGNATURE AND ORIGINAL RAISED SEAL OF A FLORIDA PROFESSIONAL SURVEYOR AND MAPPER.
- 2- DATE PREPARED: MAY 30 2007.
- 3- THIS IS NOT A SURVEY.


WEIDENER SURVEYING & MAPPING, P.A.
FLORIDA CERTIFICATION No. LB 4207
SAMUEL M. FISCHBEIN PLS. No. 3587

SKETCH TO ACCOMPANY LEGAL DESCRIPTION

CAMPBELL DRIVE ELEMENTARY SCHOOL
12' WATER MAIN EASEMENT
MIAMI DADE, FLORIDA

1778PP DATE: 5/30/07 SCALE:

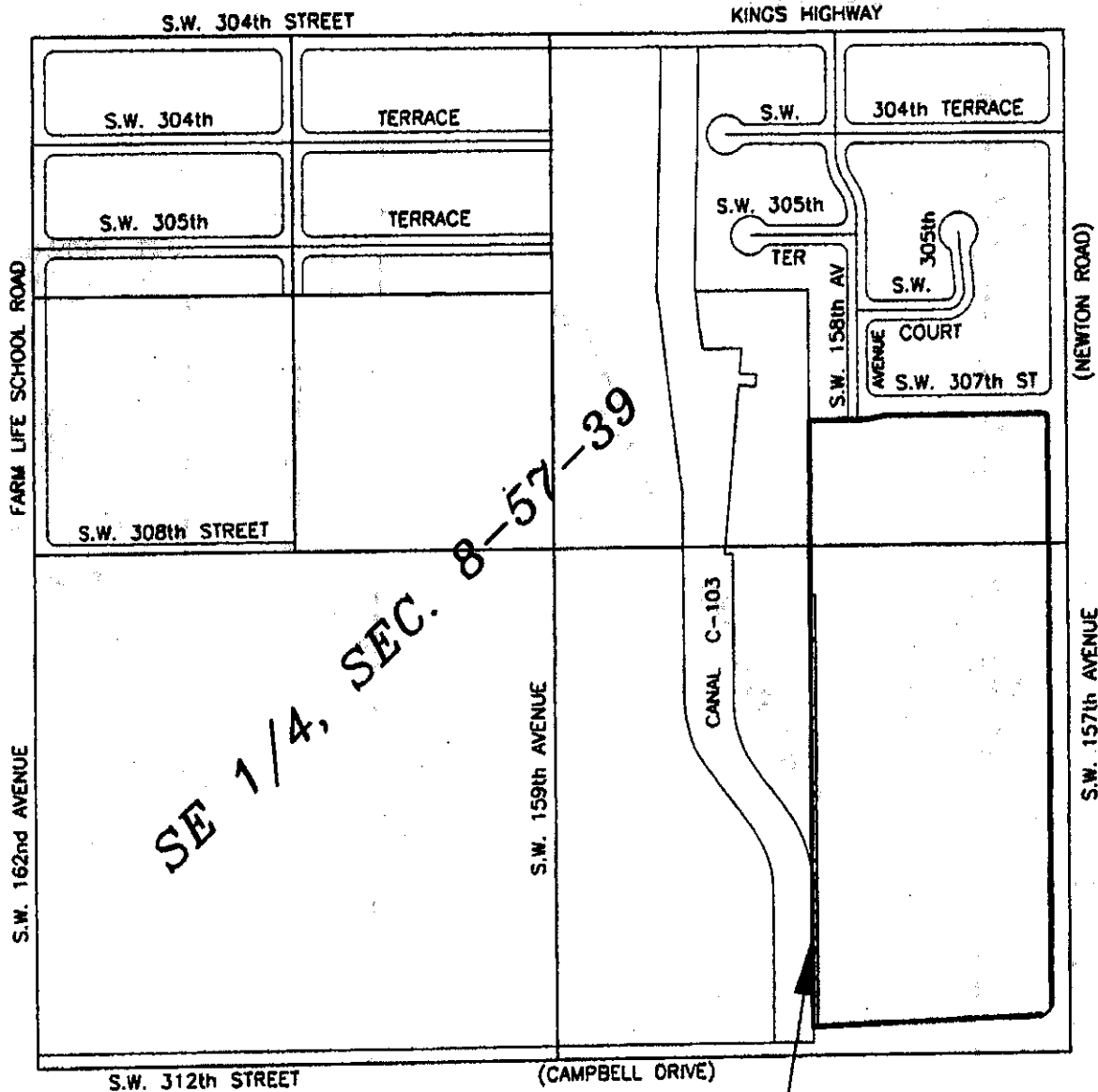


WEIDENER SURVEYING AND MAPPING PA

10418 N.W. 31st TERRACE

Miami, Florida 33172

(305) 599-6381



THIS PROJECT

LOCATION MAP

NOT TO SCALE

SKETCH TO ACCOMPANY LEGAL DESCRIPTION

CAMPBELL DRIVE ELEMENTARY SCHOOL
12' WATER MAIN EASEMENT
MIAMI DADE, FLORIDA

1778PP DATE: 5/30/07 SCALE: 1" = 180'

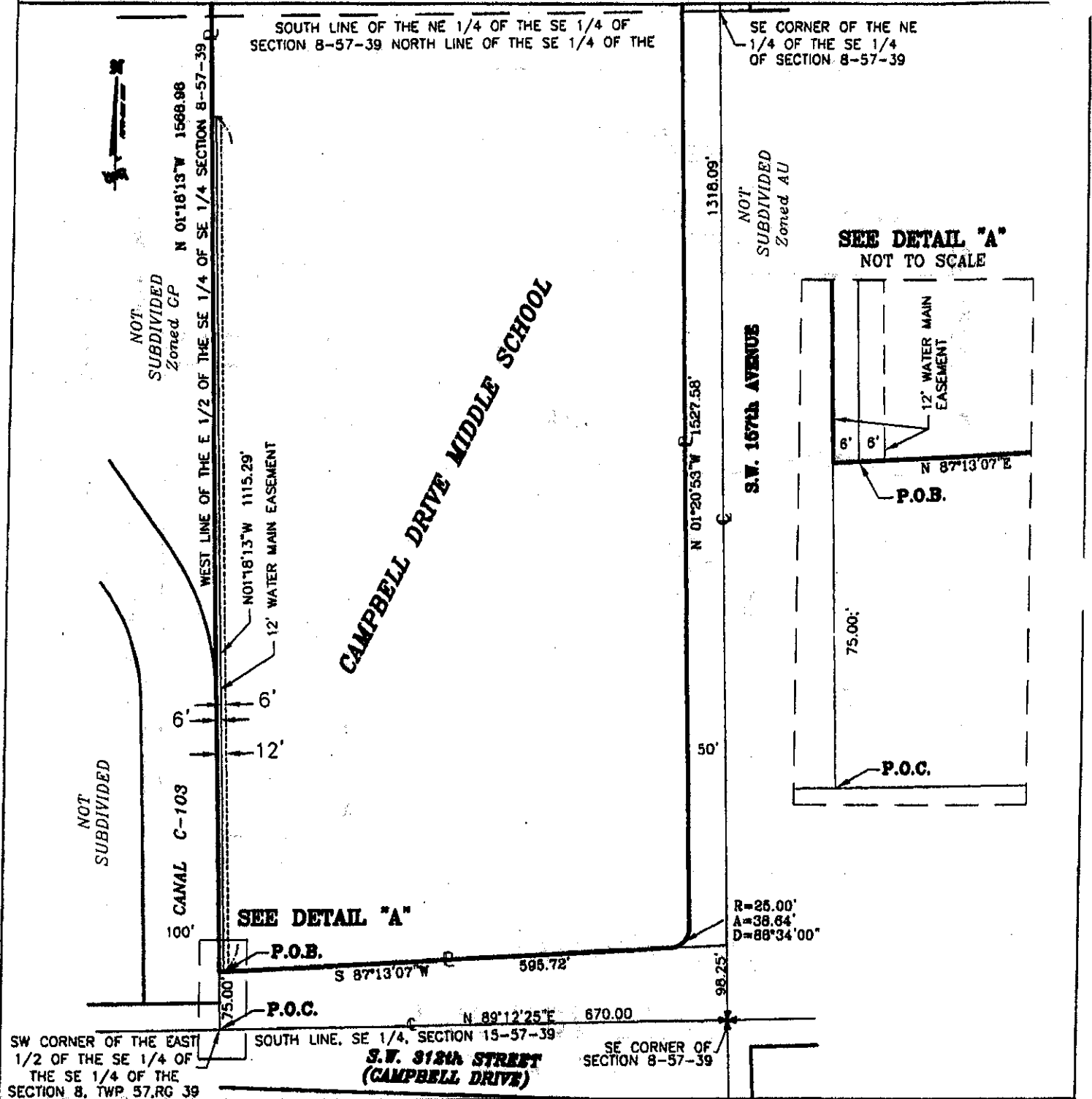


WEIDENER SURVEYING AND MAPPING PA

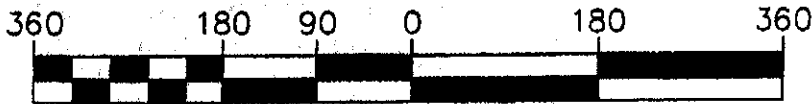
10418 N.W. 31st TERRACE

Miami, Florida 33172

(305) 599-6381



GRAPHIC SCALE



(IN FEET)

1 inch = 180 ft.

SKETCH TO ACCOMPANY LEGAL DESCRIPTION

CAMPBELL DRIVE ELEMENTARY SCHOOL,
12' WATER MAIN EASEMENT
MIAMI DADE, FLORIDA

1778PP DATE: 5/30/07 SCALE: 1"= 180'

4