

Office of School Facilities  
Jaime G. Torrens, Temporary Chief Facilities Officer

**SUBJECT: AUTHORIZATION TO GRANT A WATER LINE EASEMENT  
LOCATED AT HOLMES ELEMENTARY SCHOOL SITE AT 1175  
NW 67 STREET, MIAMI, FLORIDA IN FAVOR OF MIAMI-DADE  
COUNTY  
PROJECT NO. 00223400**

**COMMITTEE: FACILITIES AND CONSTRUCTION REFORM**

**LINK TO  
STRATEGIC PLAN: IMPROVE CONSTRUCTION SERVICES**

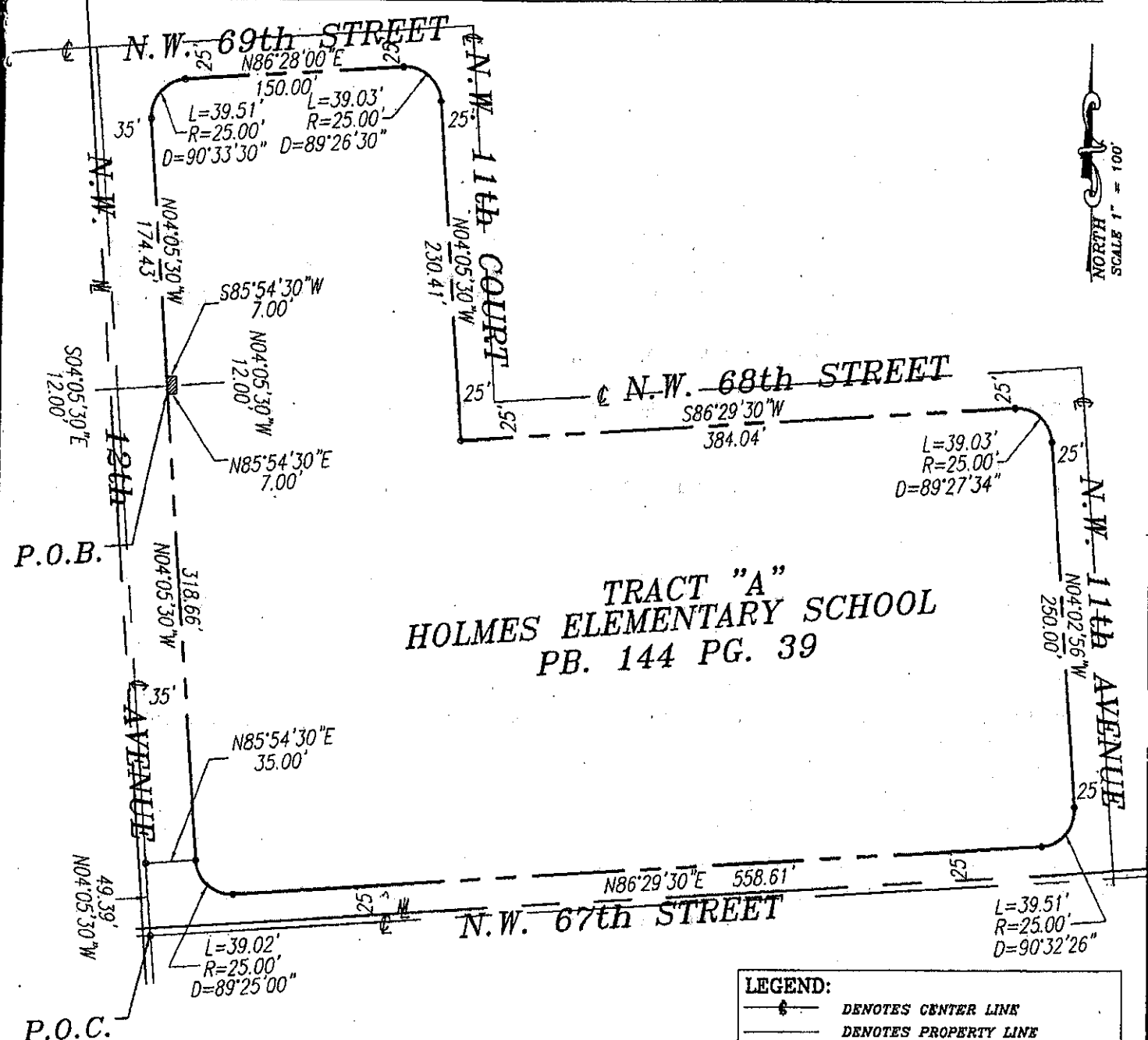
In order to maintain a water line easement constructed to provide adequate fire protection and water services to the Holmes Elementary School site, Miami-Dade County has requested that a 12-foot wide water line easement be granted by the district.

The 12-foot wide water line easement described will cover the area of the water line installations at the 7-acre school site. This area is legally described in Exhibit "A", attached hereto.

The Grant of Easement will be reviewed and approved by the School Board's Attorneys Office prior to execution. In addition, the proposed easement has been reviewed and recommended by the Office of School Facilities. Public utility facilities constructed on Board-owned property will be conveyed, with appropriate easements, to Miami-Dade County for future maintenance and operations.

**RECOMMENDED:** That The School Board of Miami-Dade County, Florida, authorize the execution of the water line easement at the Holmes Elementary School site, Project No. 00223400, in favor of Miami-Dade County.

# SKETCH TO ACCOMPANY LEGAL DESCRIPTION



NORTH  
 SCALE 1" = 100'

Sheet 2 of 3 Sheets K:\145341\HOLMES ELEMENTARY\HOLMES ELEMENTARY\EASEMENT\DWG\WATER METER EASEMENTS.DWG

**Schwabke-Shiskin & Associates, Inc.**

LAND PLANNERS • ENGINEERS • LAND SURVEYORS (LB#87)

240 CORPORATE WAY MIRAMAR, FLORIDA 33025 TEL. NO. (954) 436-7010 FAX NO. (954) 438-3288

ORDER NO. 194154

PREPARED UNDER MY SUPERVISION

DATE: 08-14-07

*[Signature]*  
 ALFONSO C. TELLO, P.L.S. #2978 (STATE OF FLORIDA)  
 PRESIDENT

THIS IS NOT A "BOUNDARY SURVEY"

K:\145341\HOLMES ELEMENTARY\HOLMES ELEMENTARY\EASEMENT\DWG\WATER METER EASEMENTS.DWG

# LEGAL DESCRIPTION TO ACCOMPANY SKETCH

## UTILITY EASEMENT

A PORTION OF TRACT "A", "HOLMES ELEMENTARY SCHOOL", ACCORDING TO THE PLAT THEREOF, AS RECORDED IN PLAT BOOK 144, AT PAGE 39, OF THE PUBLIC RECORDS OF DADE COUNTY, FLORIDA, BEING MORE PARTICULARLY DESCRIBED AS FOLLOWS:

COMMENCE AT THE CENTERLINE INTERSECTION OF N.W. 12th AVENUE AND N.W. 67th STREET, AS SHOWN ON SAID PLAT; THENCE RUN NORTH 04 DEGREES 05 MINUTES 30 SECONDS WEST, ALONG THE CENTERLINE OF SAID N.W. 12th AVENUE, FOR 49.39 FEET; THENCE NORTH 85 DEGREES 54 MINUTES 30 SECONDS EAST, AT RIGHT ANGLES TO THE LAST AND NEXT MENTIONED COURSES, FOR 35.00 FEET; THENCE RUN NORTH 04 DEGREES 05 MINUTES 30 SECONDS WEST, ALONG THE WESTERLY BOUNDARY LINE OF SAID TRACT "A", FOR 318.66 FEET, TO THE POINT OF BEGINNING OF THE FOLLOWING DESCRIBED PARCEL; THENCE NORTH 85 DEGREES 54 MINUTES 30 SECONDS EAST, FOR 7.00 FEET; THENCE NORTH 04 DEGREES 05 MINUTES 30 SECONDS WEST, FOR 12.00 FEET; THENCE SOUTH 85 DEGREES 54 MINUTES 30 SECONDS WEST, FOR 7.00 FEET; THENCE SOUTH 04 DEGREES 05 MINUTES 30 SECONDS EAST, ALONG THE WESTERLY BOUNDARY LINE OF SAID TRACT "A", FOR 12.00 FEET, TO THE POINT OF BEGINNING. LYING AND BEING IN SECTION 14, TOWNSHIP 53 SOUTH, RANGE 41 EAST, CITY OF MIAMI, MIAMI-DADE COUNTY, FLORIDA.

### NOTES:

BEARINGS SHOWN HEREON REFER TO AN ASSUMED NORTH 86 DEGREES 29 MINUTES 30 SECONDS EAST, ALONG THE NORTHERLY RIGHT-OF-WAY LINE OF N.W. 67th STREET, AS SHOWN ON SAID PLAT OF "HOLMES ELEMENTARY SCHOOL"

ORDERED BY: SILVA ARCHITECTS

Sheet 3 of 3 Sheets K:\145341\HOLMES ELEMENTARY\HOLMES ELEMENTARY\EASEMENT\DWG\WATER METER EASEMENTS.DWG

*Schwebke-Shiskin & Associates, Inc.*

LAND PLANNERS • ENGINEERS • LAND SURVEYORS (LB#87)

CORPORATE WAY MIRAMAR, FLORIDA 33025 TEL. NO. (954)435-7010 FAX NO. (954)438-3288

ORDER NO. 194154

DATE: 06-14-07

THIS IS NOT A "BOUNDARY SURVEY"

PREPARED UNDER MY SUPERVISION

PRESIDENT

ALFONSO C. TELLO, P.L.S. #2978 (STATE OF FLORIDA)

K:\145341\HOLMES ELEMENTARY\EASEMENT\DWG\WATER METER EASEMENTS.DWG