

Office of School Facilities
Jaime G. Torrens, Temporary Chief Facilities Officer

SUBJECT: **AUTHORIZATION TO GRANT A WATER LINE EASEMENT
LOCATED AT GOULDS ELEMENTARY (FORMERLY STATE
SCHOOL A-1) SCHOOL SITE AT 11150 SW 236 STREET,
MIAMI, FLORIDA IN FAVOR OF MIAMI-DADE COUNTY
PROJECT NO. A01125**

COMMITTEE: **FACILITIES AND CONSTRUCTION REFORM**

**LINK TO
STRATEGIC PLAN:** **IMPROVE CONSTRUCTION SERVICES**

In order to maintain a water line easement constructed to provide adequate fire protection and water services to the Goulds Elementary School site, Miami-Dade County has requested that a 12-foot wide water line easement be granted by the district.

The 12-foot wide water line easement described will cover the area of the water line installations at the 6-acre school site. This area is legally described in Exhibit "A", attached hereto.

The Grant of Easement will be reviewed and approved by the School Board's Attorneys Office prior to execution. In addition, the proposed easement has been reviewed and recommended by the Office of School Facilities. Public utility facilities constructed on Board-owned property will be conveyed, with appropriate easements, to Miami-Dade County for future maintenance and operations.

RECOMMENDED: That The School Board of Miami-Dade County, Florida, authorize the execution of the water line easement at the Goulds Elementary (formerly State School A-1) School site, Project No. A01125, in favor of Miami-Dade County.

SCHOOL A-1 CAYON DEVELOPMENT.

LEGAL DESCRIPTION

SCHOOL A-1 CAYON DEVELOPMENT

DESCRIPTION FOR WATER LINE EASEMENT.

THAT PART OF THE NORTH $\frac{1}{2}$ OF THE N.E. $\frac{1}{4}$ OF SECTION 19 TOWNSHIP 56 SOUTH, RANGE 40 EAST MIAMI-DADE COUNTY, FLORIDA, MORE PARTICULARLY DESCRIBED AS FOLLOWS:

COMMENCE AT THE SOUTHWEST CORNER OF SAID NORTH $\frac{1}{2}$ OF THE N.E. $\frac{1}{4}$ OF SECTION 19, TOWNSHIP 56 SOUTH, RANGE 40 EAST, MIAMI-DADE COUNTY, FLORIDA; THENCE ALONG THE SOUTH LINE OF THE SAID NORTH $\frac{1}{2}$ OF THE N.E. $\frac{1}{4}$, NORTH 89 DEGREES, 13 MINUTES AND 27 SECONDS EAST FOR 50.00 FEET TO ITS INTERSECTION WITH THE EAST LINE OF THE WEST 50 FEET OF SAID NORTH $\frac{1}{2}$, THENCE NORTH 00 DEGREES 19 MINUTES 47 SECONDS WEST ALONG SAID EAST LINE OF THE WEST 50 FEET FOR A DISTANCE OF FEET 74.39 FEET TO THE POINT OF BEGINNING; THENCE NORTH 89 DEGREES 13 MINUTES AND 27 SECONDS EAST FOR A DISTANCE OF 41.20 FEET; THENCE SOUTH 00 DEGREES 46 MINUTES AND 33 SECONDS EAST FOR A DISTANCE OF 27.38 FEET TO ITS INTERSECTION WITH A LINE 47.00 NORTH OF THE SOUTH LINE OF SAID NORTH $\frac{1}{2}$ OF THE NE $\frac{1}{4}$; THENCE NORTH 89 DEGREES 13 MINUTES AND 27 SECONDS EAST PARALLEL TO SAID SOUTH LINE FOR A DISTANCE OF 329.47 FEET; THENCE NORTH 00 DEGREES 46 MINUTES AND 33 SECONDS WEST FOR A DISTANCE OF 26.15 FEET; THENCE NORTH 89 DEGREES 13 MINUTES AND 27 SECONDS EAST PARALLEL TO SAID SOUTH LINE FOR A DISTANCE OF 39.33 FEET; THENCE SOUTH 00 DEGREES 46 MINUTES AND 33 SECONDS EAST FOR A DISTANCE OF 12.16 FEET; THENCE SOUTH 89 DEGREES 13 MINUTES AND 27 SECONDS WEST FOR 27.14 FEET; THENCE SOUTH 00 DEGREES 46 MINUTES AND 33 SECONDS EAST FOR A DISTANCE OF 13.99 FEET TO ITS INTERSECTION WITH A LINE 47.00 NORTH OF THE SOUTH LINE OF SAID NORTH $\frac{1}{2}$ OF THE NE $\frac{1}{4}$; THENCE ALONG SAID LINE NORTH 89 DEGREES 13 MINUTES AND 27 SECONDS EAST FOR 121.44 FEET; THENCE NORTH 00 DEGREES 46 MINUTES AND 33 SECONDS WEST FOR A DISTANCE OF 86.36 FEET; THENCE NORTH 89 DEGREES 13 MINUTES AND 27 SECONDS EAST FOR A DISTANCE OF 62.60 FEET; THENCE SOUTH 00 DEGREES 46 MINUTES AND 33 SECONDS EAST FOR A DISTANCE OF 86.36 FEET; THENCE NORTH 89 DEGREES 13 MINUTES AND 27 SECONDS EAST FOR 16.34 FEET; THENCE SOUTH 00 DEGREES 46 MINUTES AND 33 SECONDS EAST FOR A DISTANCE OF 12.00 FEET TO ITS INTERSECTION WITH A LINE 35.00 FEET NORTH OF THE SOUTH LINE OF SAID NORTH $\frac{1}{2}$ OF THE NE $\frac{1}{4}$; THENCE ALONG SAID LINE SOUTH 89 DEGREES 13 MINUTES AND 27 SECONDS WEST FOR 16.34 FEET; THENCE SOUTH 00 DEGREES 46 MINUTES AND 33 SECONDS EAST FOR A DISTANCE OF 35.00 FEET TO ITS INTERSECTION WITH THE SOUTH LINE OF SAID NORTH $\frac{1}{2}$ OF THE NE $\frac{1}{4}$; THENCE ALONG SAID SOUTH LINE SOUTH 89 DEGREES 13 MINUTES AND 27 SECONDS WEST FOR 12.00 FEET; THENCE NORTH 00 DEGREES 46 MINUTES AND 33 SECONDS WEST FOR A DISTANCE OF 121.36 FEET; THENCE SOUTH 89 DEGREES 13 MINUTES AND 27 SECONDS WEST FOR 38.60 FEET; THENCE SOUTH 00 DEGREES 46 MINUTES AND 33 SECONDS EAST FOR A DISTANCE OF 74.36 FEET TO ITS INTERSECTION WITH LINE 35 NORTH OF THE SOUTH LINE OF SAID NORTH $\frac{1}{2}$ OF THE NE $\frac{1}{4}$; THENCE ALONG SAID LINE SOUTH 89 DEGREES 13 MINUTES AND 27 SECONDS WEST FOR 375.01 FEET; THENCE SOUTH 00 DEGREES 46 MINUTES AND 33 SECONDS EAST FOR A DISTANCE OF 35.00 FEET TO ITS INTERSECTION WITH SOUTH LINE OF SAID NORTH $\frac{1}{2}$ OF THE NE $\frac{1}{4}$; THENCE ALONG SAID SOUTH LINE SOUTH 89 DEGREES 13 MINUTES AND 27 SECONDS WEST FOR 12.00 FEET; THENCE NORTH 00 DEGREES 46 MINUTES AND 33 SECONDS WEST FOR A DISTANCE OF 35.00 FEET; THENCE ALONG A LINE 35 FEET NORTH OF SAID SOUTH LINE OF SAID NORTH $\frac{1}{2}$ OF THE NE $\frac{1}{4}$, SOUTH 89 DEGREES 13 MINUTES AND 27 SECONDS WEST FOR 99.90 FEET; THENCE NORTH 00 DEGREES 46 MINUTES AND 33 SECONDS WEST FOR A DISTANCE OF 27.38 FEET; THENCE SOUTH 89 DEGREES 13 MINUTES AND 27 SECONDS WEST FOR 29.29 FEET TO ITS INTERSECTION WITH THE EAST LINE OF THE WEST 50 FEET OF THE SAID N $\frac{1}{2}$ OF THE NE $\frac{1}{4}$; THENCE NORTH 00 DEGREES 19 MINUTES AND 47 SECONDS WEST FOR A DISTANCE OF 12.00 FEET TO THE POINT OF BEGINNING.

PREPARED BY:
 FERNANDO Z. GATELL, PSM
 F.R. ALEMAN AND ASSOCIATES, INC
 10305 NW 41ST STREET SUITE 200
 MIAMI, FLORIDA 33178

LB: 6785

Fernando Z. Gatell

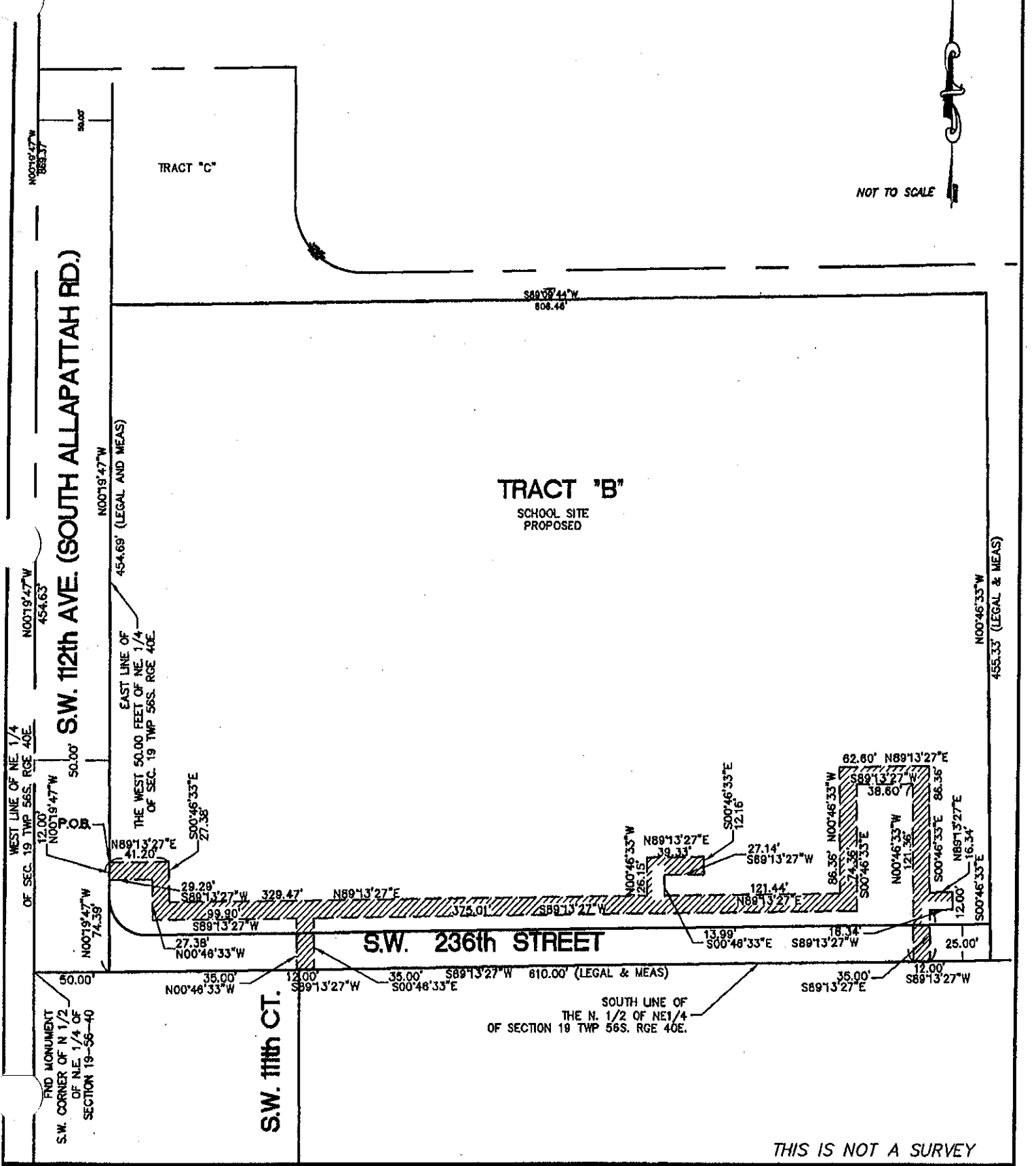
FERNANDO Z. GATELL P.S.M.
 VICE-PRESIDENT
 CERTIFICATE No. 2821
 STATE OF FLORIDA

DATE: 02/22/07

SCHOOL A-1 CAYON DEVELOPMENT
 Water & Sewer Department

SCHOOL A-1 CAYON DEVELOPMENT.

SKETCH TO ACCOMPANY LEGAL DESCRIPTION



NOT TO SCALE

455.33' (LEGAL & MEAS)

THIS IS NOT A SURVEY

DATE: 02/22/07

SCHOOL A-1 CAYON DEVELOPMENT
Water & Sewer Department