

Office of School Facilities
Jaime G. Torrens, Chief Facilities Officer

SUBJECT: AUTHORIZATION TO ENTER INTO A GRANT OF EASEMENT AGREEMENT WITH FLORIDA POWER AND LIGHT COMPANY FOR THE ELECTRICAL SERVICE REQUIREMENTS OF SOUTH MIAMI K-8 CENTER, LOCATED AT 6800 SW 60TH STREET, SOUTH MIAMI

COMMITTEE: FACILITIES AND CONSTRUCTION REFORM

LINK TO STRATEGIC PLAN: IMPROVE CONSTRUCTION SERVICES

In order to meet the electrical service requirements associated with the construction of a new three-story modular building and art and music building at South Miami K-8 Center, Florida Power & Light Company (FP&L) has requested that an easement be granted. The easement runs along the north portion of the site, is approximately 10' wide and irregular in shape. The subject area consists of approximately 1,832 square feet, or .04 acres, more or less. The area is legally described in Exhibit "A", attached hereto.

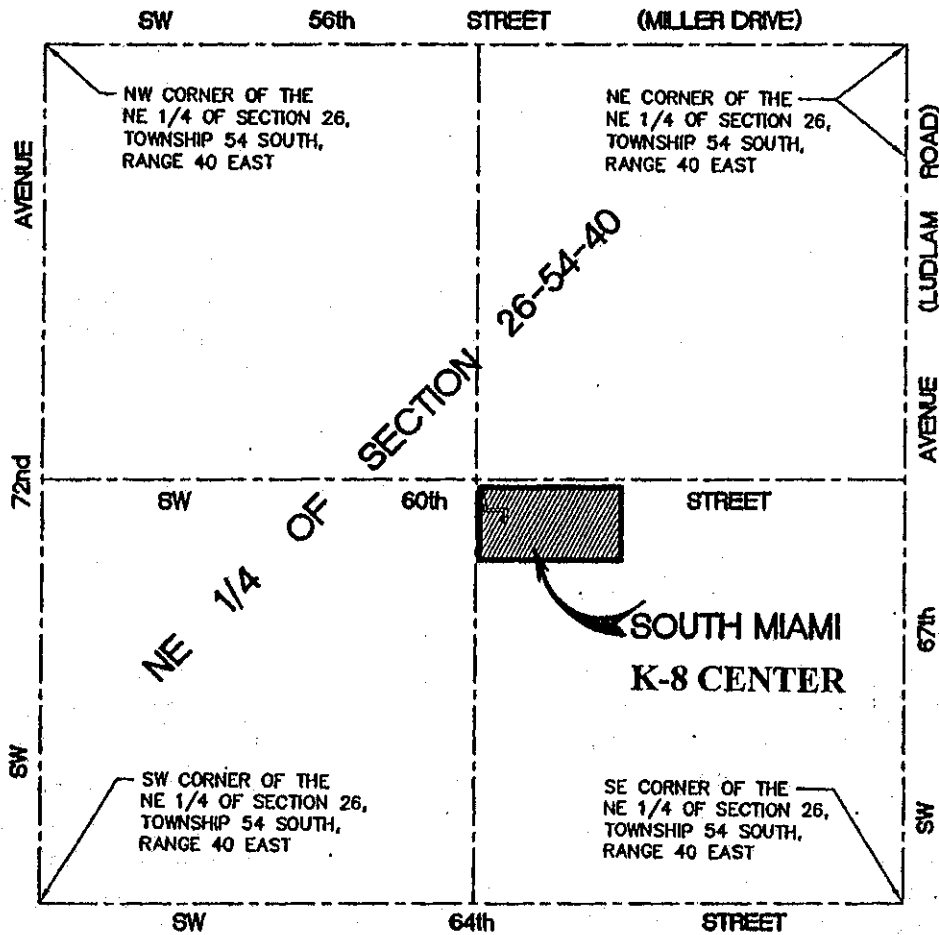
The Grant of Easement Agreement (Agreement) will be reviewed and approved by the School Board Attorney's Office and the Office of Risk and Benefits Management prior to execution. The Regional Center V Superintendent and the Office of School Facilities recommend approval of the Agreement.

RECOMMENDED: That The School Board of Miami-Dade County, Florida, authorize the Chair and Secretary to execute a Grant of Easement Agreement with Florida Power and Light Company for the electrical service requirements associated with South Miami K-8 Center, as described above.

RL

F - 2

EXHIBIT A



LOCATION MAP

A PORTION OF NE 1/4 OF SECTION 26, TOWNSHIP 54 SOUTH, RANGE 40 EAST.
NOT TO SCALE

LEGAL DESCRIPTION:

Commence at the Southwest Corner of the N.E. 1/4 of the N.E. 1/4 of Section 26, Township 54 South, Range 40 East of the Public Records of Miami-Dade County, Florida; thence run South 02°34'24" East to a point on the Southerly Right-of-Way Line of S.W. 60th Street for a distance of 25.00 feet, thence run North 87°25'36" East along the said Southerly Right-of-Way Line of S.W. 60th Street for a distance of 11.45 feet to the POINT OF BEGINNING; thence run South 13°46'31" East for a distance of 75.11 feet to a point; thence run North 88°01'40" East for a distance of 61.80 feet to a point; thence run South 02°24'25" East for a distance of 13.52 feet to a point; thence run North 73°19'21" West for a distance of 3.90 feet to a point; thence run South 18°36'48" West for a distance of 17.14 feet to a point; thence run South 73°19'21" East for a distance of 17.64 feet to a point; thence run North 18°36'48" East for a distance of 17.14 feet to a point; thence run North 73°19'21" West for a distance of 3.16 feet to a point; thence run North 02°24'25" West for a distance of 26.91 feet to a point; thence run South 88°01'40" West for a distance of 63.60 feet to a point; thence run North 13°46'31" West for a distance of 65.01 feet to a point on the Southerly Right-of-Way Line of S.W. 60th Street; thence run South 87°25'36" West along the said Southerly Right-of-Way Line of S.W. 60th Street for a distance of 10.19 feet to the POINT OF BEGINNING, containing an area of 1,832 square feet, more or less.

NOTES:
1. THIS IS NOT A SURVEY.
2. BEARINGS & DISTANCES ARE BASED ON AN ASSUMED MERIDIAN ALONG THE CENTERLINE OF S.W. 60th STREET, AS SHOWN.

NO.	DATE	REVISION

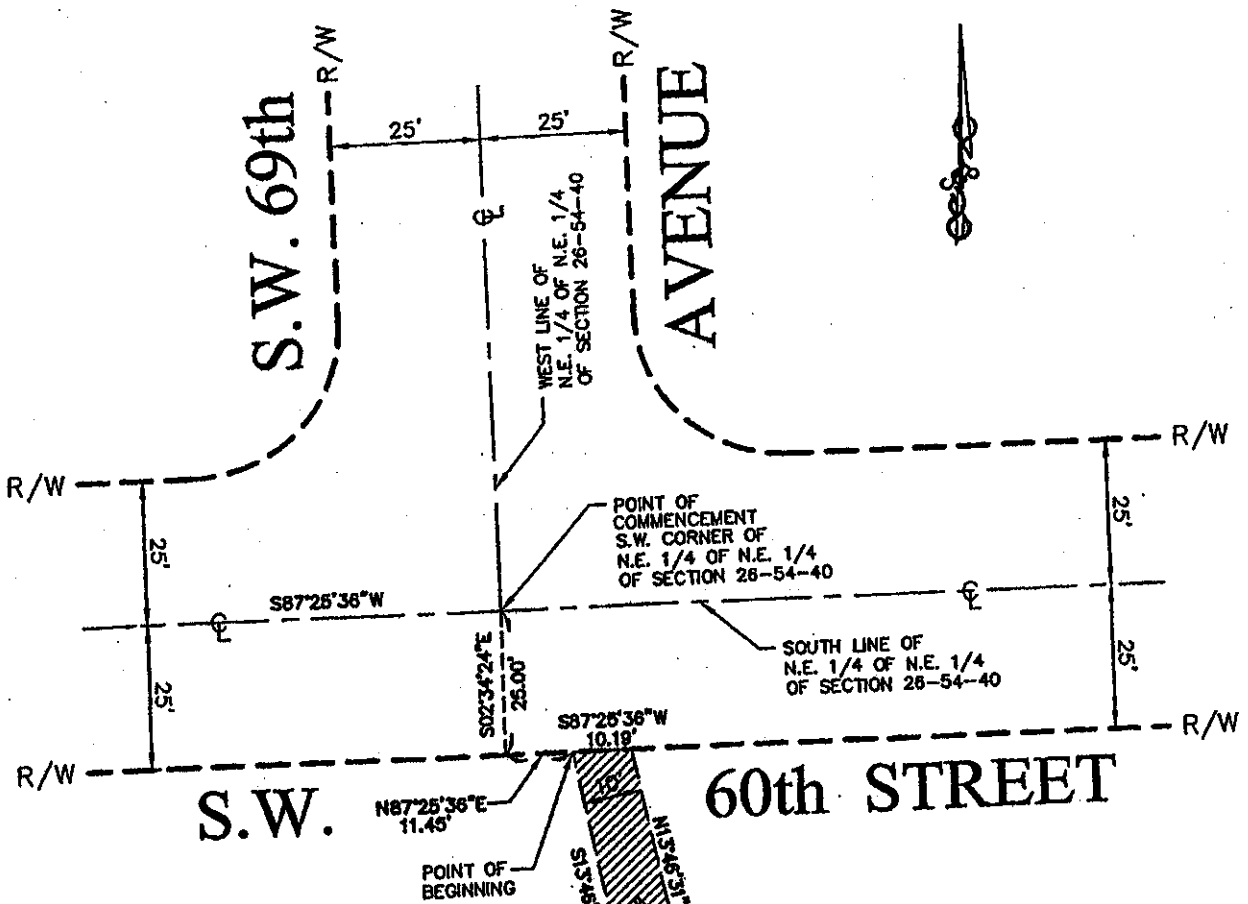
Aviño & ASSOCIATES
 600 S.W. 87th AVENUE
 SUITE 207
 WEST MIAMI, FLORIDA 33144
 TEL: 305 365-8030 - FAX: 305 365-8033
 CERTIFICATE OF AUTHORIZATION CE - 8095
 CERTIFICATE OF AUTHORIZATION LB - 9095
 EMAIL: JAVINO@AVIINOASSOCIATES.COM

SOUTH MIAMI K-8 CENTER
SKETCH OF EASEMENT

[Signature]
 11/15/07
 JORGE R. AVINO, P.E., P.S.M.

DRAWN BY: B.L.S.	SHEET
CHECKED BY: J.A.L.	1
DATE: 11/15/2007	OF 2 SHEETS
SCALE: 1"=30'	
JOB No: 06137.00	

A PORTION THE NE 1/4 OF SECTION 26-54-40



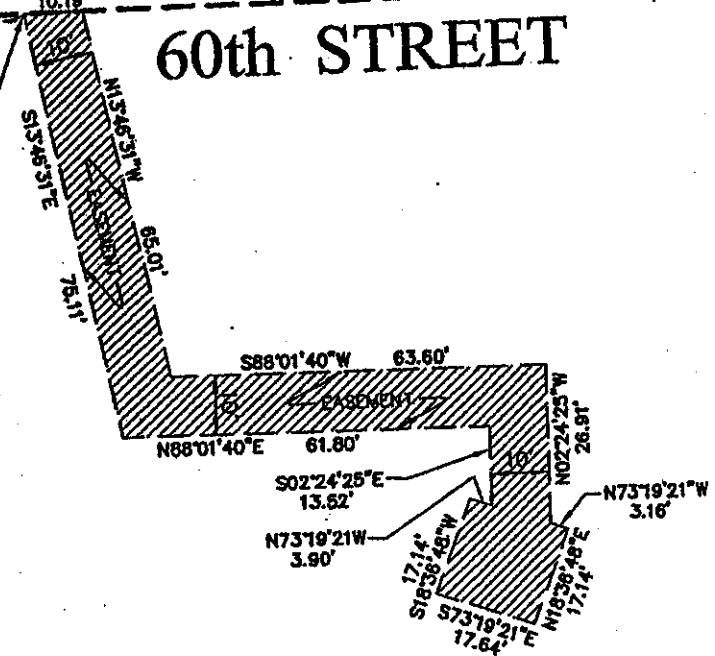
LEGEND

- P/L Property Line
- R/W Right-of-Way Line
- P.B. Plat Book
- PG. Page
- ⊕ Centerline

POINT OF BEGINNING

POINT OF COMMENCEMENT
S.W. CORNER OF
N.E. 1/4 OF N.E. 1/4
OF SECTION 26-54-40

SOUTH LINE OF
N.E. 1/4 OF N.E. 1/4
OF SECTION 26-54-40



NOTES:
1. THIS IS NOT A SURVEY.
2. THE ABOVE BEARINGS AND DISTANCES ARE BASED ON AN ASSUMED MERIDIAN ALONG THE CENTERLINE OF S.W. 60th STREET, AS SHOWN.

NO.	DATE	REVISION

Aviño & ASSOCIATES
 800 SW 8th Avenue
 Suite 207
 West Miami, Florida 33134
 TEL: 800-850-9030 • FAX: 305-346-9033
 CERTIFICATE OF AUTHORIZATION #0-8098
 CERTIFICATE OF AUMENTACION #0-8098
 CMAA, J. RAYD-RIVON-CASSACAY@COM

SOUTH MIAMI K-8 CENTER
 SKETCH OF EASEMENT

[Signature]
 11/15/07

DRAWN BY: B.A.E.
 CHECKED BY: J.R.A.
 DATE: 11/05/2007
 SCALE: 1"=30'
 JOB NO.: 08137.00

SHEET
2
 OF 2 SHEETS