

Office of School Facilities
Jaime G. Torrens, Chief Facilities Officer

**SUBJECT: AUTHORIZATION TO GRANT A WATER LINE EASEMENT
LOCATED AT KINLOCH PARK ELEMENTARY SCHOOL SITE
AT 4275 NW 1 STREET, MIAMI, FLORIDA IN FAVOR OF MIAMI-
DADE COUNTY
PROJECT NO. A01004**

COMMITTEE: FACILITIES AND CONSTRUCTION REFORM

**LINK TO
STRATEGIC PLAN: IMPROVE CONSTRUCTION SERVICES**

In order to maintain a water line easement constructed to provide adequate fire protection to the Kinloch Park Elementary School site, Miami-Dade County has requested that a 12-foot wide water line easement be granted by the district.

The 12-foot wide water line easement described will cover the area of the water line installations at the 4-acre school site. This area is legally described in Exhibit "A", attached hereto.

The Grant of Easement will be reviewed and approved by the School Board's Attorneys Office prior to execution. In addition, the proposed easement has been reviewed and recommended by the Office of School Facilities. Public utility facilities constructed on Board-owned property will be conveyed, with appropriate easements, to Miami-Dade County for future maintenance and operations.

RECOMMENDED: That The School Board of Miami-Dade County, Florida, authorize the execution of the water line easement at the Kinloch Park Elementary School site. Project No. A01004, in favor of Miami-Dade County.

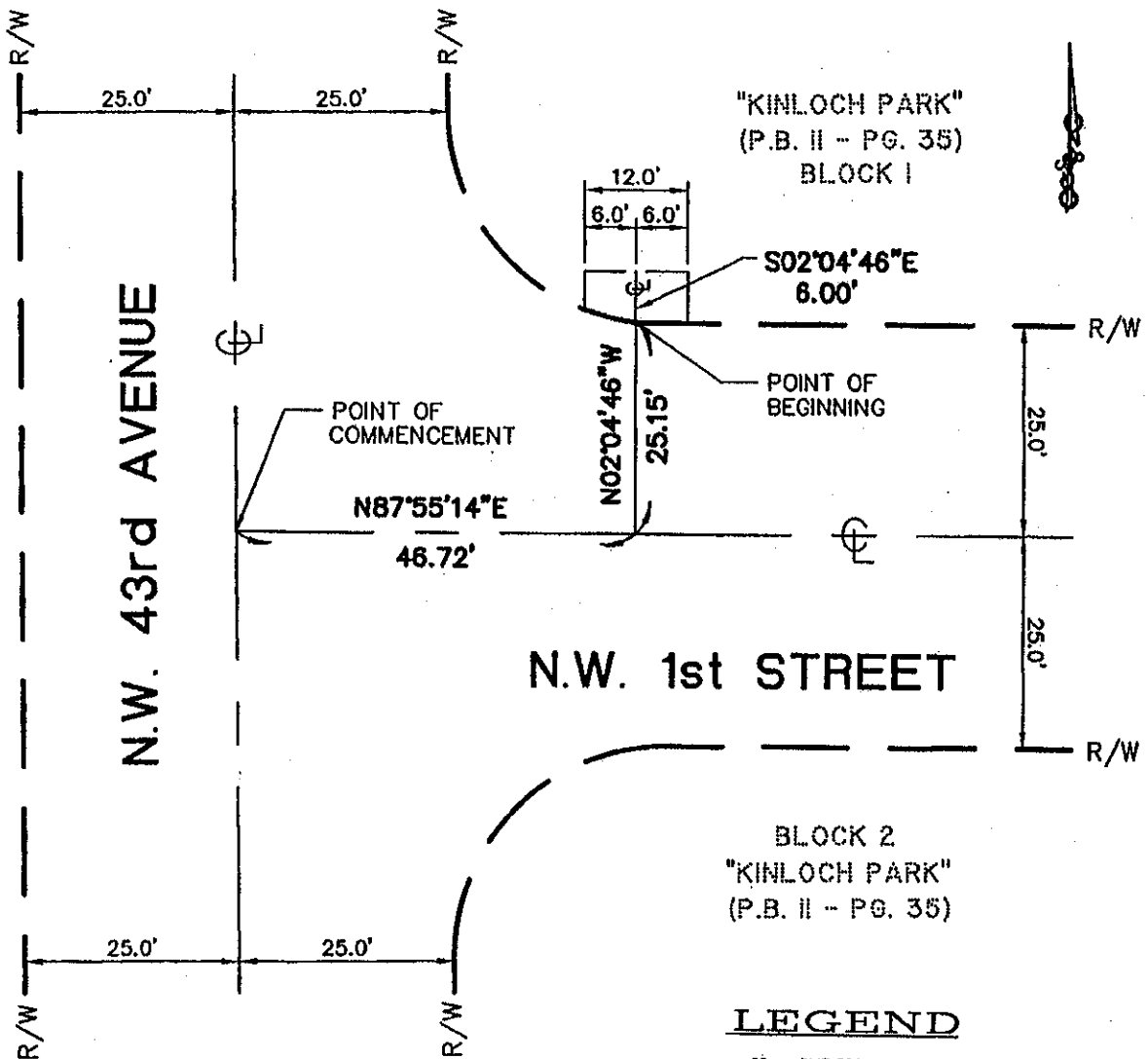
LML

EXHIBIT 'A'

LEGAL DESCRIPTION

A portion of land lying in the Northwest one-quarter of Section 5, Township 54 South, Range 41 East, Miami-Dade County, Florida, being more particularly described as follows:

Commence at the intersection of the centerline of N.W. 43rd Avenue with the centerline of N.W. 1st Street, Miami, Florida; thence run N87°55'14"E along said centerline of N.W. 1st Street for a distance of 46.72 feet; thence run N02°04'46"W for a distance of 25.15 feet to a point on the North Right-of-Way Line of N.W. 1st Street, said point also being the POINT OF BEGINNING of the centerline of a 12 foot wide water line easement; thence continue N02°04'46"W for a distance 6 feet to the end of said 12 foot wide water line easement.



LEGEND

- P.B. = PLAT BOOK
- P.G. = PAGE
- ⊕ = CENTERLINE
- = MONUMENT LINE

NOTES:

1. THIS IS NOT A SURVEY.
2. BEARINGS SHOWN HEREON ARE BASED ON AN ASSUMED VALUE OF N87°55'14"E ALONG THE CENTERLINE OF THE N.W. 1st STREET.

NO.	DATE	REVISION

Aviño & ASSOCIATES
 1850 SW 87th Avenue
 Suite 207
 West Miami, Florida 33144
 TEL: 305 295-0080 - FAX: 305 295-5086
 CERTIFICATE OF AUTHORIZATION LB-5086
 CERTIFICATE OF AUTHORIZATION LB-5086
 EMAIL: AVINO@AVINOENGINEERS.COM

**KINLOCH PARK ELEMENTARY
 SCHOOL ADDITION
 SKETCH OF EASEMENT**

SEAL
 JORGE R. AVINO, P.E., P.S.M.

DRAWN BY: B.J.S.
CHECKED BY: J.R.A.
DATE: 10/11/2007
SCALE: 1"=20'
JOB No.: 05105.01

SHEET
2
 OF 2 SHEETS