

Office of School Facilities
Jaime G. Torrens, Chief Facilities Officer

**SUBJECT: AUTHORIZATION TO GRANT AN ADDITIONAL EASEMENT TO
THE EXISTING EASEMENT LOCATED AT AMELIA EARHART
ELEMENTARY SCHOOL SITE AT 5987 EAST 7 AVENUE,
HIALEAH, FLORIDA IN FAVOR OF MIAMI-DADE COUNTY**

COMMITTEE: FACILITIES AND CONSTRUCTION REFORM

**LINK TO
STRATEGIC PLAN: IMPROVE CONSTRUCTION SERVICES**

At the September 17, 1975 Board meeting, the Board approved granting Miami-Dade County a 75 foot square parcel at the Southeast corner of the Amelia Earhart Elementary school, in order to facilitate the installation of Pump Station #348 and associated infrastructure.

At this time, Miami-Dade County has requested an additional 8-foot to the north and 27-feet by 47-feet to the west of the existing easement. This additional easement, which will effectively serve to increase the area of the existing easement, is needed for an odor control system and to accommodate a larger capacity fuel storage tank. The School grounds will be returned to their original conditions.

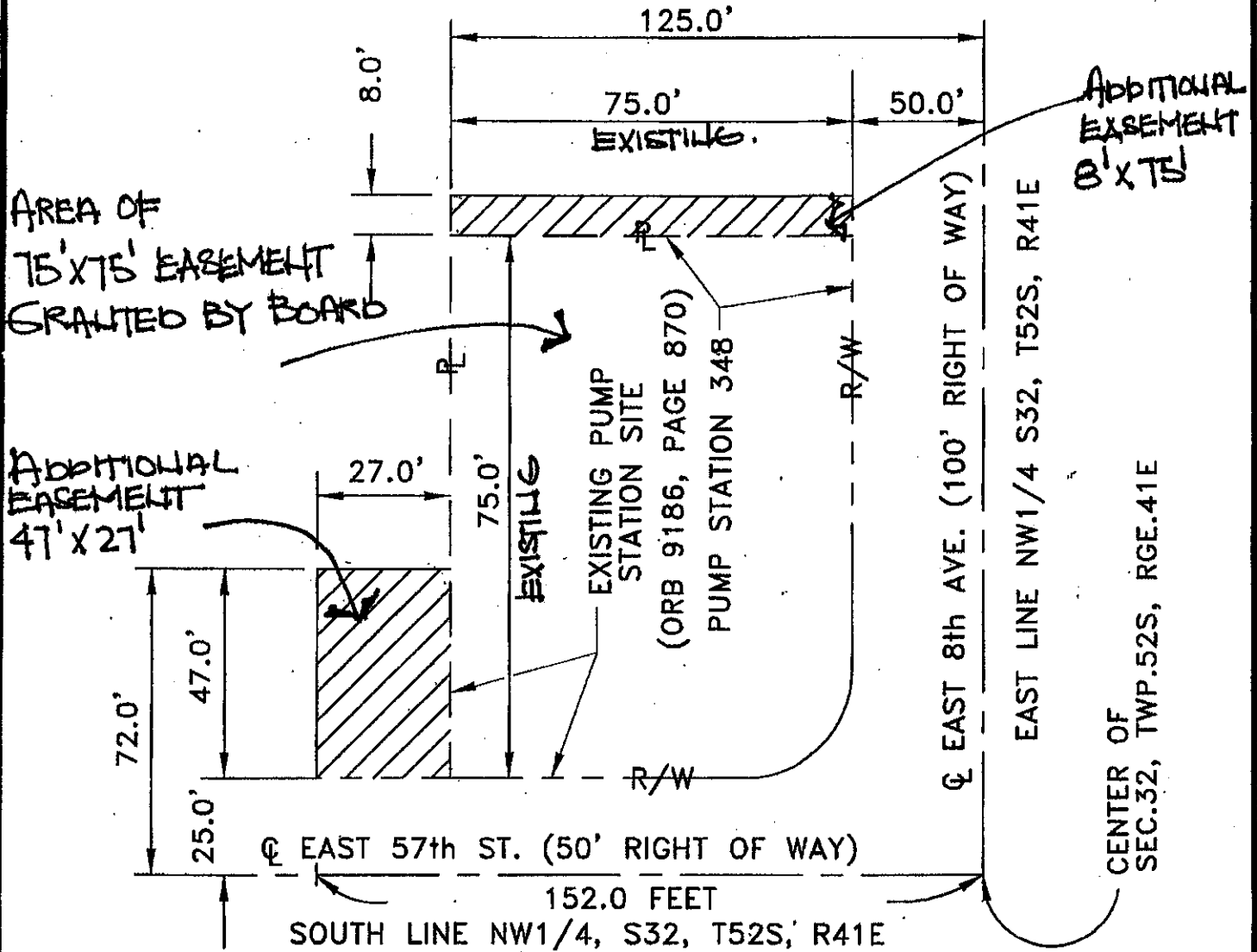
This area is legally described in Exhibit "A", attached hereto. The shaded area denotes the additional easement.

The Additional Grant of Easement will be reviewed for approval by the School Board's Attorneys Office prior to execution. In addition, the proposed easement has been reviewed and recommended by the Office of School Facilities. Public utility facilities constructed on Board-owned property will be conveyed, with appropriate easements, to Miami-Dade County for future maintenance and operations.

RECOMMENDED: That The School Board of Miami-Dade County, Florida, authorize the execution of the additional easement at the Amelia Earhart Elementary School site in favor of Miami-Dade County.

LML

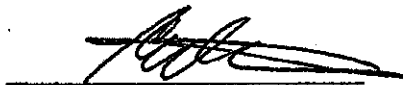
CITY OF HIALEAH
 MIAMI-DADE COUNTY / SEC.32-TWP.52S-RGE.41E.



LEGAL DESCRIPTION:

THE NORTH 8.0 FEET OF THE SOUTH 108.0 FEET OF THE EAST 125.0 FEET OF THE SOUTH EAST 1/4 OF THE SOUTH EAST 1/4 OF THE NORTH WEST 1/4 OF SECTION 32, TOWNSHIP 52 SOUTH, RANGE 41 EAST, MIAMI-DADE COUNTY, FLORIDA, LESS THE EAST 50.0 FEET FOR ROAD RIGHT OF WAY;

AND
 THE WEST 27.0 FEET OF THE EAST 152.0 FEET OF THE SOUTH 72.0 FEET OF THE SOUTH EAST 1/4 OF THE SOUTH EAST 1/4 OF THE NORTH WEST 1/4 OF SECTION 32, TOWNSHIP 52 SOUTH, RANGE 41 EAST, MIAMI-DADE COUNTY, FLORIDA, LESS THE SOUTH 25.0 FEET FOR ROAD RIGHT OF WAY.


 ESTEBAN ORTIZ
 PROFESSIONAL SURVEYOR AND MAPPER
 LICENSE NUMBER LS5927
 STATE OF FLORIDA

PERMANENT EASEMENT SKETCH FOR PUMP STATION 348	
MIAMI - DADE WATER AND SEWER DEPARTMENT	
DATE: AUGUST 14, 2007	SCALE: N.T.S.
ER: 47888	PS 348