

Office of School Facilities
Jaime G. Torrens, Chief Facilities Officer

**SUBJECT: AUTHORIZATION TO GRANT A WATER LINE EASEMENT
LOCATED AT THE MIAMI NORLAND SENIOR HIGH SCHOOL
SITE AT 1050 NW 195 STREET, NORTH MIAMI BEACH,
FLORIDA IN FAVOR OF THE CITY OF NORTH MIAMI BEACH,
FLORIDA
PROJECT NO. A0816**

COMMITTEE: FACILITIES AND CONSTRUCTION REFORM

**LINK TO
STRATEGIC PLAN: IMPROVE CONSTRUCTION SERVICES**

In order to maintain a water line easement constructed to provide adequate fire protection and water services to the Miami Norland Senior High School site, the City of North Miami Beach, Florida has requested that each water line easement be granted by the district.

The 21 x 18-foot wide water line easement described will cover the area of the water line installations at the 16 acre site. This area is legally described in Exhibit "A", attached hereto.

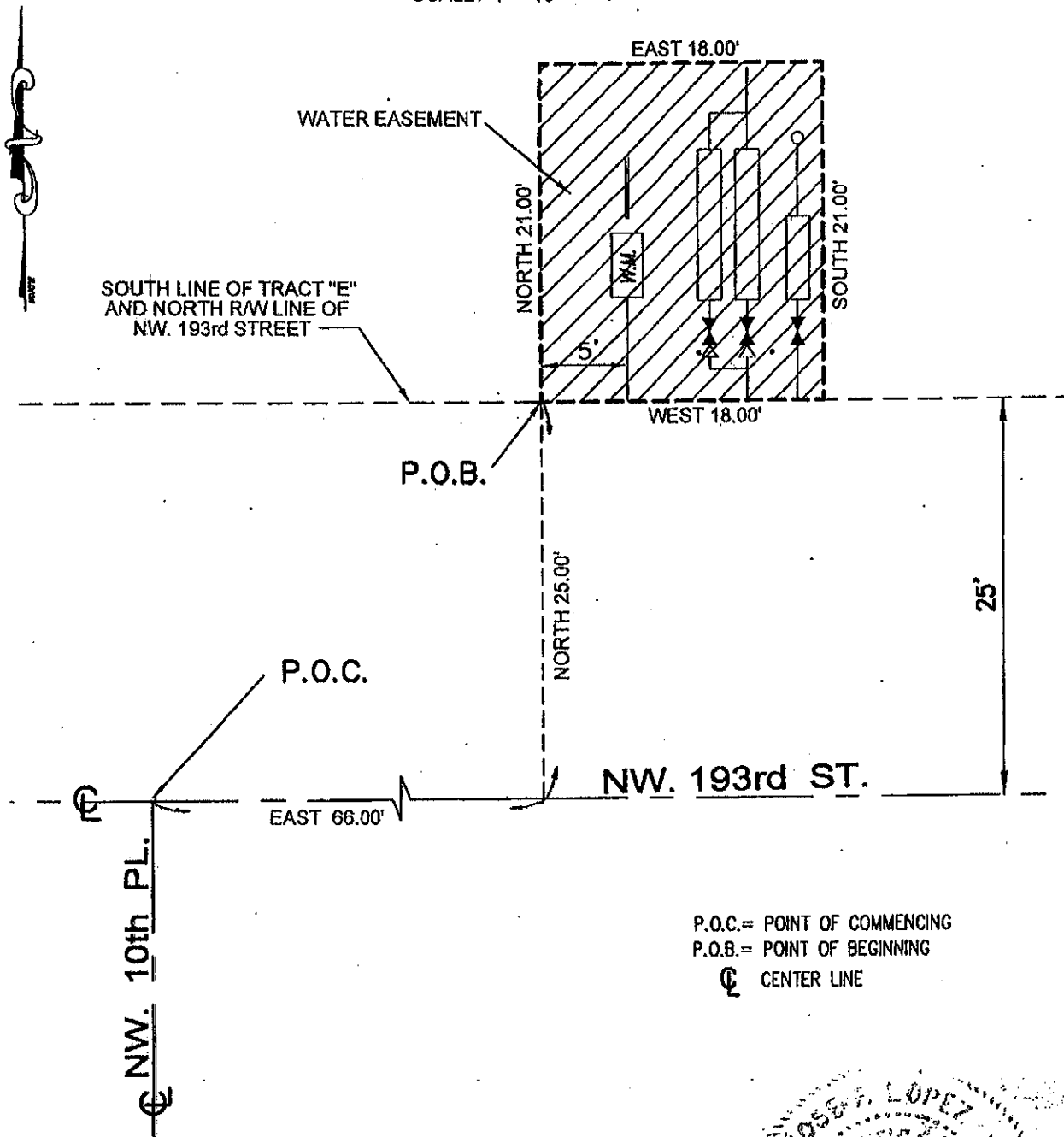
The Grant of Easement will be reviewed for approval by the School Board's Attorneys Office prior to execution. In addition, the proposed easement has been reviewed and recommended by the Office of School Facilities. Public utility facilities constructed on Board-owned property will be conveyed, with appropriate easements, to the City of North Miami Beach for future maintenance and operations.

RECOMMENDED: That The School Board of Miami-Dade County, Florida, authorize the execution of the water line easement at the Miami Norland Senior High School site, Project No. A0816, in favor of the City of North Miami Beach, Florida.

LML

SKETCH OF EASEMENT

SCALE: 1" = 10'



P.O.C. = POINT OF COMMENCING

P.O.B. = POINT OF BEGINNING

Ⓞ CENTER LINE

PREPARED BY:

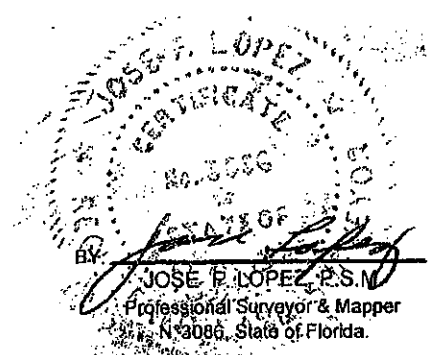
J. F. LOPEZ & ASSOCIATES, INC.

CONSULTING LAND SURVEYORS AND PLANNERS

CERTIFICATE N° LB.3192, STATE OF FLORIDA

7900 NW. 155th ST, SUITE 104, MIAMI LAKES, FL.33016

Ph: (305) 828-2725 Fax: (305) 828-3589



LEGAL DESCRIPTION OF WATER EASEMENT:

A portion of Tract "E", of "SUBDIVISION OF PORTIONS OF NORWOOD 2nd ADDITION", according to the Plat thereof, as recorded in Plat Book 59, at Page 33, of the Public Records of Miami-Dade County, Florida, being more particularly described as follow:

COMMENCING at the intersection of NW. 193rd Street and NW. 10th Place; thence run East along the center line of NW. 193rd Street for 66.00 feet; thence North 25.00 feet to the point of intersection with the South line of said Tract "E", and the North Right of Way line of NW. 193rd Street; as shown on said Plat of "SUBDIVISION OF PORTIONS OF NORWOOD 2nd ADDITION"; said point also being the POINT OF BEGINNING; thence North 21.00 feet; thence East 18.00 feet; South 21.00 feet; thence West along the South line of said Tract "E" for 18.00 feet to the POINT OF BEGINNING.

Containing 378 square feet.

BY: _____

Jose Lopez
JOSE F. LOPEZ, P.S.M.

Professional Surveyor & Mapper
N°3086, State of Florida.