

August 26, 2009

Office of School Facilities  
Jaime G. Torrens, Chief Facilities Officer

**SUBJECT:            AUTHORIZATION FOR THE CHAIR AND SECRETARY TO EXECUTE A GRANT OF EASEMENT AGREEMENT WITH FLORIDA POWER AND LIGHT COMPANY FOR THE ELECTRICAL SERVICE REQUIREMENTS ASSOCIATED WITH THE CONSTRUCTION OF A CLASSROOM ADDITION AT G. HOLMES BRADDOCK SENIOR HIGH SCHOOL, LOCATED AT 3601 SW 147 AVENUE**

**COMMITTEE:            FACILITIES AND CONSTRUCTION REFORM**

**LINK TO  
STRATEGIC PLAN:            IMPROVE CONSTRUCTION SERVICES**

In order to meet the electrical service requirements associated with the construction of a classroom addition at G. Holmes Braddock Senior High School, located at 3601 SW 147 Avenue, Florida Power & Light Company has requested that an easement be granted to feed the new addition. The easement runs through the southern portion of the site and is 10' wide. The subject area consists of 4,386 square feet, or .10 acre, more or less. The area is legally described in Exhibit "A", attached hereto.

The Grant of Easement Agreement (Agreement) will be reviewed and approved by the School Board Attorney's Office prior to execution. The Office of School Facilities recommends approval of the Agreement.

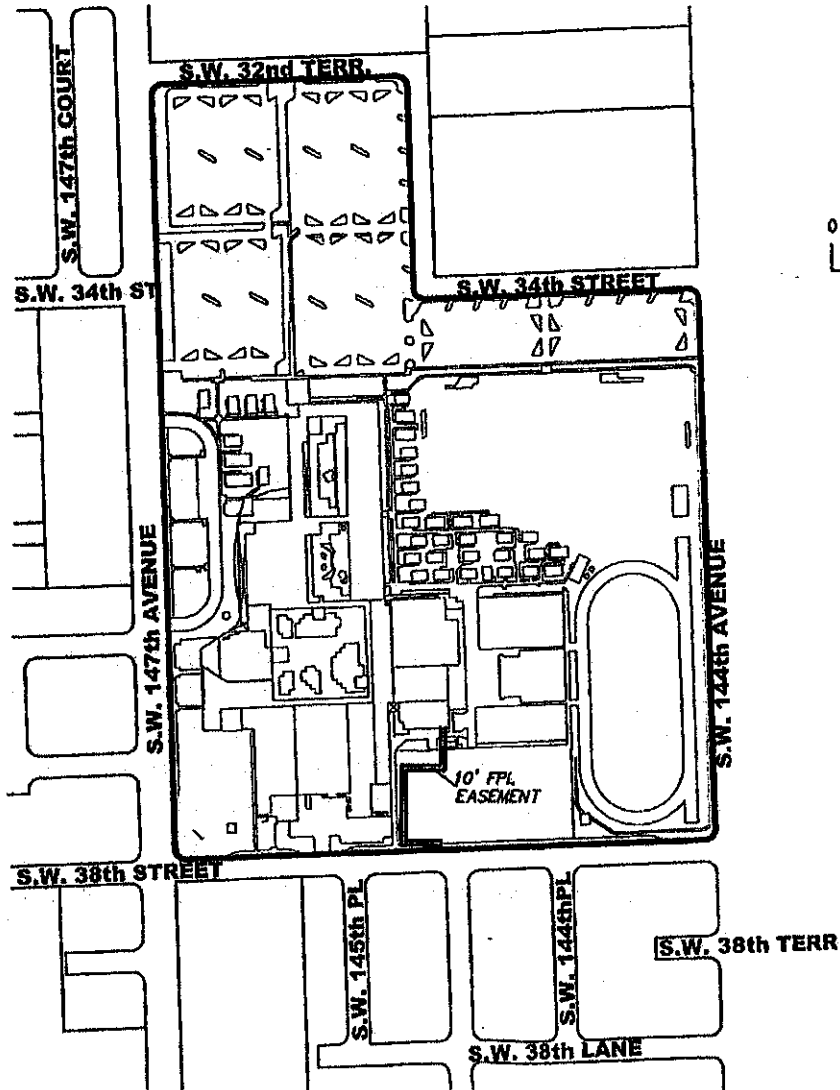
**RECOMMENDED:** That The School Board of Miami-Dade County, Florida, authorize the Chair and Secretary to execute a Grant of Easement Agreement with Florida Power and Light Company for electrical service requirements associated with the construction of a classroom addition at G. Holmes Braddock Senior High School, as described above.

RL:

**F - 1**

EXHIBIT A

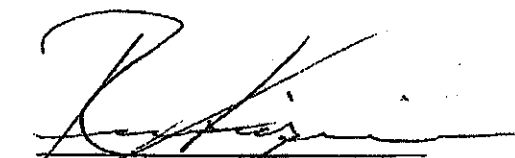
SKETCH TO ACCOMPANY LEGAL DESCRIPTION  
BRADDOCK SENIOR HIGH SCHOOL  
FP&L EASEMENT



A Florida Power & Light Easement lying in the S.W. 1/4 of Section 15, Township 54 South, Range 39 East and within a portion of TRACT "A", BRADDOCK SENIOR HIGH SCHOOL, according to the plat thereof as recorded in Plat Book 143, at Page 40, of the Public Records of Miami-Dade County, Florida, being a 10.00 foot strip of land lying 5.00 feet, as measured at right angles on either side of the following described centerline:

Commencing at the street centerline intersection of S.W. 144th Avenue and S.W. 38th Street, as shown on said plat of TRACT "A", BRADDOCK SENIOR HIGH SCHOOL; thence S87°41'32"W, along the centerline of said S.W. 38th Street, for a distance of 669.17 feet; thence N02°18'28"W, for a distance of 39.22 feet, to the Point of Beginning; thence continue S87°45'46"W, for a distance of 85.51 feet; thence continue N02°14'14"W, for a distance of 172.83 feet; thence continue N87°45'46"E, for a distance of 89.00 feet; thence continue N02°14'14"W, for a distance of 91.33 feet; to the Point of Termination. Containing 4,386 Square feet (0.10 acres) more or less.

Prepared by: S.I. (09-13373)

  
 RENE AIGUESVIVES 07/13/09  
 PROFESSIONAL SURVEYOR AND  
 MAPPER No. 4327. State of Florida.

Not valid unless  
 it bears the  
 signature and the  
 original raised  
 seal of Florida  
 licensed Surveyor  
 and Mapper.

Alvarez, Aiguesvives and Associates, Inc.  
 L.B. No. 6867  
 Surveyors, Mappers and Land Planners  
 5701 S.W. 107th Avenue # 206, Miami, FL 33173  
 Phone 305-220-2424 Fax 305-552-8181

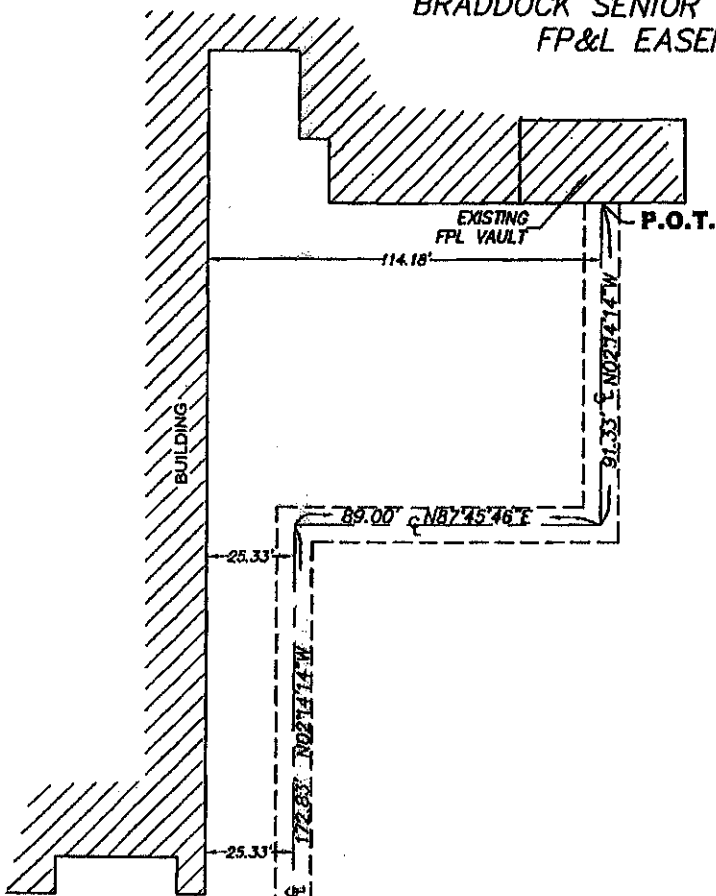
NOT A SURVEY

**SKETCH TO ACCOMPANY LEGAL DESCRIPTION  
BRADDOCK SENIOR HIGH SCHOOL  
FP&L EASEMENT**

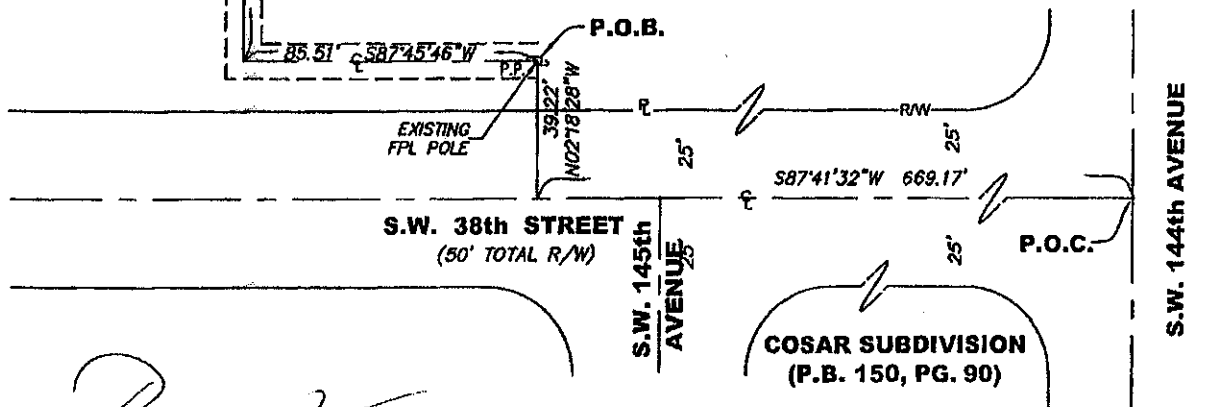
**LEGEND**

- CL = Center Line
- F.H. = Fire Hydrant
- Fd. = Found
- P.B. = Plat Book
- PG. = Page
- P.O.B. = Point of Beginning
- P.O.C. = Point of Commencement
- P.O.T. = Point of Termination
- PSM = Professional Surveyor
- RAW = Right-of-Way
- P.P. = Power Pole

Bearing based on the  
Plat P.B. 143, Pg. 40.



TRACT "A"  
"BRADDOCK SENIOR HIGH SCHOOL"  
(P.B. 143, PG. 40)



Prepared by: S.I. (09-13373)

*René Aiguesvives*  
RENE AIGUESVIVES 07/13/09  
PROFESSIONAL SURVEYOR AND  
MAPPER No. 4327, State of Florida.

NOT A SURVEY

Not valid unless  
it bears the  
signature and the  
original raised  
seal of Florida  
licensed Surveyor  
and Mapper.

Alvarez, Aiguesvives and Associates, Inc.  
L.B. No. 6867  
Surveyors, Mappers and Land Planners  
5701 S.W. 107th Avenue # 206, Miami, FL 33173  
Phone 305-220-2424 Fax 305-552-8181