

Office of School Facilities  
Jaime G. Torrens, Chief Facilities Officer

**SUBJECT: AUTHORIZATION FOR THE CHAIR AND SECRETARY TO EXECUTE A GRANT OF EASEMENT AGREEMENT FOR A WATER LINE AT BOB GRAHAM EDUCATION CENTER, LOCATED AT 15901 NW 79 AVENUE, AND TO CONVEY THE SUBJECT UTILITY LINE IN FAVOR OF AND TO MIAMI-DADE COUNTY  
PROJECT NO. A0825S0091CM**

**COMMITTEE: FACILITIES AND CONSTRUCTION REFORM**

**LINK TO STRATEGIC FRAMEWORK: FINANCIAL EFFICIENCY/STABILITY**

In order to maintain a water line constructed to service the Bob Graham Education Center, Miami-Dade County has requested a Grant of Easement Agreement from the District for the subject water line, as well as the conveyance of said line. The 12-foot wide easement will cover the area of the water line installation, as more specifically described in Exhibit "A", attached hereto.

The Grant of Easement Agreement and conveyance documents will be reviewed and approved by the School Board Attorney's Office prior to execution. The Office of School Facilities recommends approval of both documents.

**RECOMMENDED:** That The School Board of Miami-Dade County, Florida, authorize the Chair and Secretary to execute a Grant of Easement Agreement for a water line at Bob Graham Education Center, located at 15901 NW 79 Avenue, and to convey the subject utility line (project no. A0825S0091CM) in favor of and to Miami-Dade County, as described above.

LML

**F - 21**

**LEGAL DESCRIPTION FOR 12' WIDE WATER MAIN EASEMENT:**

PORTIONS OF TRACT 52, FLORIDA FRUIT LANDS COMPANY SUBDIVISION NO. 1 OF SECTION 15, TOWNSHIP 52 SOUTH, RANGE 40 EAST AS RECORDED IN PLAT BOOK 2, AT PAGE 17 OF THE PUBLIC RECORDS OF MIAMI-DADE COUNTY, FLORIDA, BEING MORE PARTICULARLY DESCRIBED AS FOLLOWS.

COMMENCE AT THE NORTHEAST CORNER OF TRACT 'A' MARRIOTT SPRINGHILL SUITES AS RECORDED IN PLAT BOOK 161 AT PAGE 32 OF THE PUBLIC RECORDS OF MIAMI-DADE COUNTY, FLORIDA. THENCE N 0°00'00" W FOR 9.80 FEET TO THE POINT OF BEGINNING OF A 12.00 FEET WIDE EASEMENT LYING 6.00 FEET ON EACH SIDE OF THE FOLLOWING DESCRIBED LINE, THENCE S 89°44'11" W FOR 268.50 FEET TO POINT A, THENCE S 89°52'56" W FOR 207.10 FEET TO POINT B, THENCE S 89°52'56" W FOR 11.00 FEET TO THE END OF THIS EASEMENT. AND BEGIN AT POINT A AS PREVIOUSLY DESCRIBED, THENCE N 00°15'49" W FOR 16.20 FEET TO THE END OF THIS EASEMENT. AND BEGIN AT POINT B A PREVIOUSLY DESCRIBED, THENCE N 00°07'04" W FOR 18.30 FEET TO THE END OF THIS EASEMENT. THIS EASEMENT LIES TOTALLY WITHIN THE CAMPUS OF BOB GRAHAM EDUCATIONAL CENTER.

**NOTES:**

1-NOT VALID WITHOUT THE SIGNATURE AND EMBOSSED SEAL OF A FLORIDA REGISTERED LAND SURVEYOR.

2-DATE PREPARED: 29 MARCH 2006.

3-INFORMATION FOR THIS EASEMENT WAS TAKEN FROM AN AS-BUILT SURVEY PREPARED BY MPG TECHNICAL GROUP, CORP. DATED: 13 DECEMBER 2004.

*Weidener Surveying & Mapping, P.A.*  
*Florida Certification No. LB 4207*  
Samuel M. Fischbein PLS No.3587

SKETCH TO ACCOMPANY LEGAL DESCRIPTION

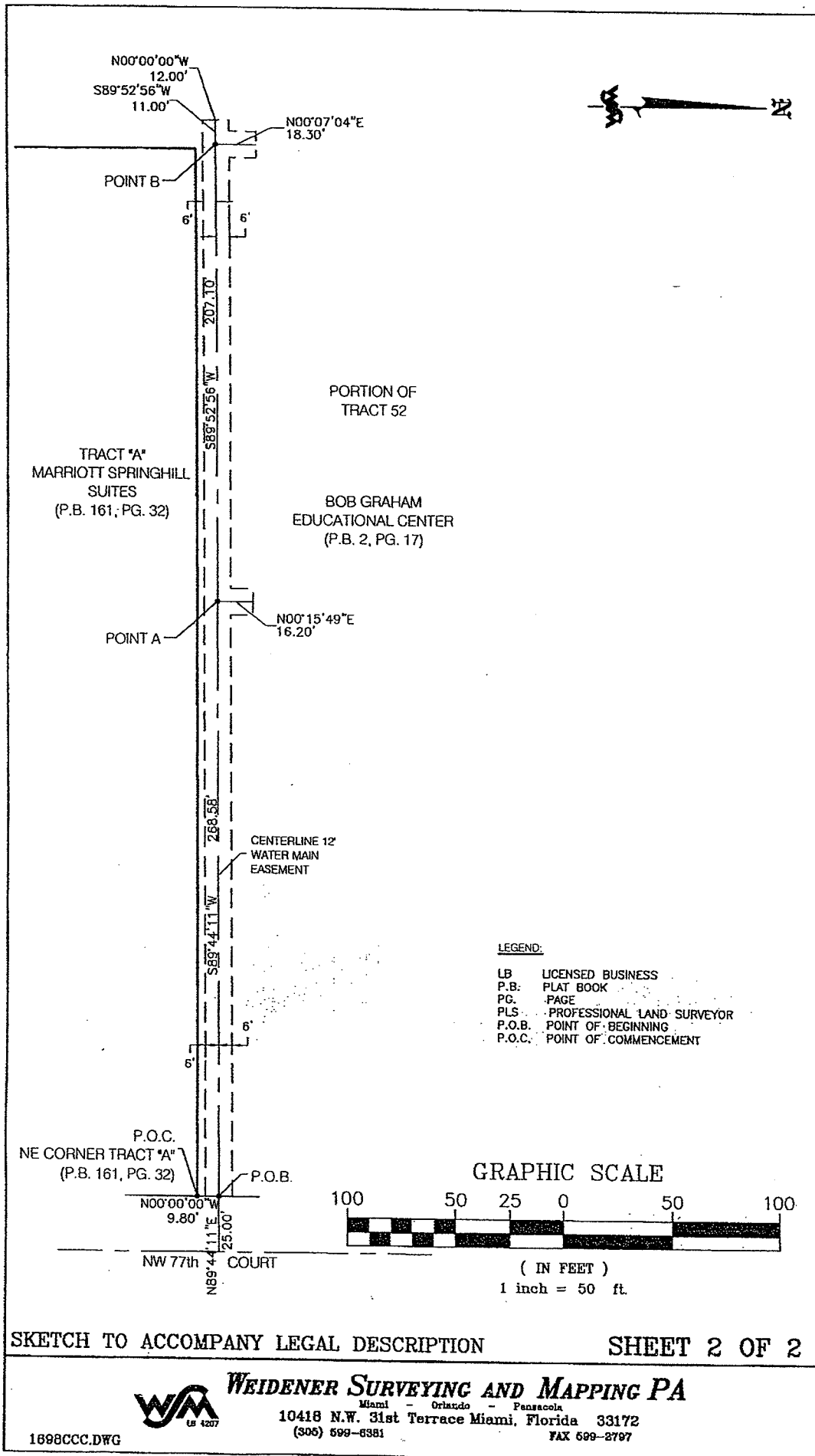
SHEET 1 OF 2



**WEIDENER SURVEYING AND MAPPING PA**

Miami - Orlando - Pensacola  
10418 N.W. 31st Terrace Miami, Florida 33172  
(305) 599-8381 FAX 599-2797

1898CCC.DWG



SKETCH TO ACCOMPANY LEGAL DESCRIPTION

SHEET 2 OF 2



**WEIDENER SURVEYING AND MAPPING PA**

Miami - Orlando - Pensacola

10418 N.W. 31st Terrace Miami, Florida 33172  
 (305) 699-6381 FAX 699-2797

1698CCC.DWG