

Vera A. Hirsh, Assistant Superintendent
Human Resources, Recruiting and Performance Management

**SUBJECT: REQUEST FOR APPROVAL OF SUPERINTENDENT'S
REORGANIZATION AND RESTRUCTURING OF SELECT
DISTRICT OFFICES AND A REDUCTION-IN-FORCE/
LAYOFF OF SELECT POSITIONS**

1. APPROVE THE PROPOSED REORGANIZATION AND RESTRUCTURING OF SELECT DISTRICT OFFICES
2. APPROVE A REDUCTION-IN-FORCE/LAYOFF FOR COLLECTIVE BARGAINING UNITS AND EMPLOYEE ORGANIZATIONS
3. AUTHORIZE THE SUPERINTENDENT TO IMPLEMENT A RE-ABSORPTION PLAN AND SEPARATION PLAN TO ALL IMPACTED EMPLOYEES (WHICH INCLUDES OUTPLACEMENT ASSISTANCE)
4. AUTHORIZE THE SUPERINTENDENT TO PROVIDE TERMINAL PAY (FOR ACCRUED SICK LEAVE) TO ALL IMPACTED EMPLOYEES AND A RETIREMENT INCENTIVE TO ELIGIBLE EMPLOYEES
5. APPOINT AND ASSIGN MANAGERIAL EXEMPT PERSONNEL (MEP) AND DADE COUNTY SCHOOL ADMINISTRATORS ASSOCIATION (DCSAA) } **A
D
D
E
D**
6. AUTHORIZE THE SUPERINTENDENT TO MAKE MINOR PERSONNEL ADJUSTMENTS, IF NECESSARY, AND REPORT IN WRITING TO THE BOARD

COMMITTEE: SCHOOL SUPPORT ACCOUNTABILITY

**LINK TO STRATEGIC
FRAMEWORK: FINANCIAL EFFICIENCY/STABILITY**

The development of this Board agenda item is consistent with maintaining the core values of the District; improving student achievement; protecting the classroom; protecting teachers, and insuring fiscal viability. During the 2009-2010 school year, the District took significant precautions to maintain a balanced budget, including holding to a strict hiring freeze with the exception of hiring classroom teachers. Although the District has made significant reductions, over \$400 million in the past three years, it will close its books with more than \$70 million in the contingency fund, a factor that contributed substantially to an improved Moody's rating from a negative to stable outlook, which was not the case for the state. } **R
e
v
i
s
e
d**

**Revised
D-25**

The 2010-2011 school year continues to present many fiscal challenges; the District must account not only for a significant drop in the collection of Miami-Dade County property taxes, but also must strive to meet the constitutional class size mandate with limited additional funding from the state. Further, the Florida Legislature assumed an increase of 4,244 FTE for Miami-Dade County Public Schools (M-DCPS) in the budget. These students have not materialized at this time. To date, the District has taken many steps to reduce non-salary expenditures for next school year in hopes of mitigating the number of M-DCPS employees who are affected.

A conscious decision has been made to exclude reductions in teaching positions, services to the classroom, security, custodial, maintenance and other positions representative of the most vulnerable members of our workforce. However, reductions are still needed to ensure a balanced budget. Reduction and downsizing of District and non-school site positions, as well as deployment of personnel to schools to meet the constitutional class size mandate are being recommended in this Board item.

This Board item proposes a reduction of \$8 million through a reorganization and restructuring of non-school site offices which result in the elimination of non-school site positions. This is a 40% reduction of central office administrative expenditures since 2008-2009. These recommendations will assist the District in responding to what appears to be a deteriorating fiscal outlook for 2011-2012. REVISED

Reorganization and Re-Structuring

In accordance with Florida Statute Sections 1001.49 and 1012.27, and School Board Rule 6Gx13-4A-1.15, it is within the Superintendent's authority to recommend reorganization to the School Board for approval.

- The proposed reorganization will streamline operations and enhance strategic alignment by:
 - Identifying and eliminating operational redundancies with a focus on meeting constitutional class size limits and school improvement requirements;
 - Eliminating inefficient business practices to reduce operating costs and generate a balanced budget;
 - Aligning staffing levels with current workloads and priorities;
 - Establishing functional positions to support the self-insurance program.

- The proposed reorganization will bring efficiencies and improvements to the organization including:
 - Establishing a new cabinet level position as required by Florida Statute and School Improvement Grant guidelines to provide a continuity of support to persistently low performing schools as designated by the State's school improvement policy, this is a grant-funded position;

- Continued downsizing of capital-funded workforce in accordance with reduced revenues;
- Leveraging school facilities staff to provide essential maintenance to our schools and to complete capital projects in progress.

The reorganization is being proposed for the District at this time to help balance the 2010-2011 budget, to continue to improve efficiencies, and to establish reporting structures required by the state before the beginning of the school year. The following are changes recommended to several District offices that are part of the \$8 million in savings to the District.

- **Financial Services** is streamlining its processes by capitalizing on the District investment in technology through the elimination and the realignment of positions.
- **Human Resources, Recruiting and Performance Management**, in concurrence with the SAP implementation of organizational management eRecruiting and HR 2.0 is establishing a dedicated work location in order to ensure smooth implementation of the aforementioned modules. Other changes include pay grade changes and the opening of an Employee Service Center.
- **School Facilities** is reducing project management and related positions in accordance with funded capital workload, consolidating work locations and functions, realigning existing Maintenance workforce, eliminating one regional maintenance center, reassigning personnel and establishing a work unit to perform in-sourced project work worth approximately \$26 million.
- **Curriculum and Instruction** is realigning instructional programs to ensure greater efficiency and productivity in the delivery of services. Twenty-nine positions have been eliminated and job duties have been restructured to ensure continuity of services.
- **Education Transformation and Performance** is the state required, grant-funded office, charged with advising the Superintendent on systemwide school improvement efforts, and directing management of the School Improvement Grant and the lowest performing schools. This position reports directly to the Superintendent. A
D
D
E
D
- **School Operations** is reducing its non-school site managerial exempt staff by three positions. However, it is necessary to fill open school site positions (e.g. principals and assistant principals) and to transfer or reassign school site administrators as required by the Florida's School Improvement Grant.
- **Miami-Dade Schools Police Department** adjusted positions to more effectively align services to schools. There is no cost to the District for this realignment. A
D
D
E
D

Deployment of Non-School Site Staff to Schools to Meet Class Size Requirements

The Florida Constitution requires that beginning with the 2010-2011 school year, class by class limits would be 18:1 in grades pre-k through 3; 22:1 in grades 4 through 8; and 25:1 in grades 9 through 12 in core courses. The Florida Legislature did pass SB2 placing the issue back on the ballot in the November 2010 general election, modifying

the current language to allow compliance to remain at the school average with hard caps. In order for the measure to pass, it requires a 60% approval rate by the electorate, a very high threshold to achieve. Therefore, a plan has been developed to make every effort to meet the constitutional class size requirement within available resources for August 2010, by:

- Fully allocating the State's \$14 million Class Size Reduction appropriation;
- Establishing virtual school courses in at least 20 high schools;
- Requiring reading, mathematics, and science coaches, with the exception of turn-around schools, to teach one class;
- Requiring other instructional staff to teach classes;
- Deploying approximately 200 non-school site personnel, including curriculum support specialists and selected managerial exempt personnel as needed to meet class size requirements. The individuals being deployed will result in a further downsizing of non-school site offices and a re-distribution of funding to schools of up to a potential \$12 million.

Reduction-in-Force/Layoff

Authorization of the Board is requested to approve a Reduction-in-Force/Layoff of selected positions in accordance with Florida Statutes 1001.49 and 1012.27, School Board Rules 6Gx13-4D-1.022, 6Gx13-4D-1.023 and the District's collective bargaining agreements.

Several actions that were taken during the 2009-2010 school year mitigated the number of positions being recommended for a reduction-in-force/layoff such as a strict hiring freeze. The school allocation plan approved by the Board in 2009 aligned clerical assignments to Full Time Equivalents (FTEs) at school sites resulting in 220 over allocated clerical positions at schools. For the 2009-2010 school year these employees did not occupy generated positions. Over this past year, 50 positions have been mitigated through attrition. However, there are still 170 school-site clerical staff over the budgeted allocation for schools. It is the intention of this Board item to recommend that the 170 school-site clerical remain employed for the 2010-2011 school year, which means, that the District will have absorbed these individuals for two years, instead of laying them off. These individuals will be employed with the following provisions:

- Over allocated employees will not remain at their current school-site locations;
- During the 2010-2011 school year, these aforementioned employees will be moved to any open positions for which they are qualified as they become available; remaining employees not generated in the budget will have their positions terminated by June 30, 2011; assistance will be provided to these individuals through workforce development.

Furthermore, should there be a substantial change in the District economic outlook as a result of loss of funding; Board policy changes, health care increases, or changes in collective bargaining agreements, there may be a need to revisit this recommendation.

Capital Construction Project Management and other support areas have been reduced by 41% this fiscal year, even though the recommended reduction-in-force for Dade County School Administrators Association (DCSAA) positions represents less than a 1% decline. Twenty-eight DCSAA positions are being proposed for elimination this fiscal year, including positions in facilities, technology and financial services, and in the office of Audit and Investigative Affairs. Additionally, 11 non-school site UTD clerical positions, 11 confidential exempt (CEP) positions and 15 non-school site managerial exempt positions (MEP) have been recommended for elimination.

In total, this proposal impacts 65 central office positions, of which 42 are currently filled. Many of the employees affected by these reductions have college degrees which may make them eligible for classroom teaching positions, including mathematics and/or science. Affected employees selecting the option of becoming classroom teachers will participate in intensive professional development before school begins, as well as professional development throughout the school year. In fact, several of the affected employees already hold teaching certificates.

To date, none of the incumbents in the aforementioned positions have been terminated.

Re-absorption Plan, Separation Plan and Outplacement Assistance

The employees affected by these reductions will be treated with dignity, respect, and appreciation of their contributions to the District. The Office of Human Resources, Recruiting, and Performance Management, with assistance from Labor Relations, will review the current title and credentials of each impacted employee to determine their eligibility to seek re-employment in vacancies for which they qualify, within the school system.

A separation plan has been developed to provide an array of services, including outplacement assistance to employee. Each employee will be directly notified of these services and provided with an individual assistance plan. The separation plan will also address any individual issues affecting impacted employees.

Terminal Pay (Sick Leave), Annual Leave (Vacation Leave), and Employee Benefits and Retirement Incentive to Eligible Employees

Upon termination, all individuals will be compensated for their accrued annual leave (vacation leave) in accordance with School Board Rule 6Gx13-4E-1.18. Although not mandated by collective bargaining agreements or School Board Rule, the Superintendent is requesting authorization to provide terminal pay (accrued sick leave) to all employees who are terminated as part of the Reduction-in-Force/Layoff.

Employee benefits which include, healthcare for employees and covered dependents, flexible benefits and life insurance, will be provided in accordance with the provisions of the pertinent collective bargaining agreements and according to Federal and State laws, including COBRA continuation of benefits.

A retirement incentive will be offered to eligible employees whose positions are being eliminated through this reduction-in-force/lay-off. This retirement incentive offers Board paid health insurance not to exceed 36 months. Details of this retirement incentive are reflected in Board Agenda Item Replacement D-10 approved by the Board on April 14, 2010. To date, 146 employees are taking advantage of the retirement incentive plan effective July 1, 2010. Only classroom teaching positions will be replaced; the remaining positions will be eliminated.

New principals' appointments begin on page seven; new assistant principals appointments begin on page 12; lateral principals moves begin on page 18; lateral assistant principals moves begin on page 21; and non-school site assignments begin on page 29.

A
D
D
E
D

Total Savings

The 2010-2011 projected savings resulting from this Board Agenda Item is approximately \$8 million.

RECOMMENDED: That effective July 15, 2010, or as soon thereafter as can be facilitated, The School Board of Miami-Dade County, Florida:

1. Approve the proposed reorganization and restructuring of select District Offices
2. Approve a Reduction-in-Force/Layoff for collective bargaining units and employee organizations
3. Authorize the Superintendent to implement a re-absorption plan and separation plan to all impacted employees (which includes outplacement assistance)
4. Authorize the Superintendent to provide terminal pay (for accrued sick leave) to all impacted employees and a retirement incentive to eligible employees
5. Appoint and assign Managerial Exempt Personnel (MEP) and Dade County School Administrators Association (DCSAA)
6. Authorize the Superintendent to make minor personnel adjustments, if necessary and report in writing to the Board.

A
D
D
E
D

SCHOOL-SITE ADMINISTRATIVE ASSIGNMENTS
PRINCIPALS

<u>NAME</u>	<u>CURRENT ASSIGNMENT</u>	<u>CURRENT PG</u>	<u>NEW ASSIGNMENT</u>	<u>NEW PG</u>	
Eric Acosta	Middle Assistant Principal South Miami Middle Community School	AP	Interim Middle School Principal Palm Springs Middle School	P2	} A D D E D
Mercy Aguilar	Elementary Assistant Principal Charles R. Drew Elementary School	AP	Interim Elementary Principal Oliver Hoover Elementary School	P1	
Gregory M. Bethune	Vice Principal Miami Jackson Senior High School	VP	Interim Middle School Principal Brownsville Middle School	P2	} A D D E D
Alejandro Perez	K-8 Center Principal, Coral Way K-8 Center	P2	Senior High Principal International Studies High School	P3	
Jose Bueno	Middle School Principal Country Club Middle School	P2	Senior High Principal Hialeah-Miami Lakes Senior High School	P3	} A D D E D
Earl Burth	Middle Assistant Principal Homestead Middle School	AP	Interim Elementary Principal Lenora Braynon Smith Elementary School	P1	
Henry N. Crawford	Middle School Principal Charles R. Drew Middle School	P2	Elementary Principal Martin Luther King Elementary School	P1	} A D D E D
Lourdes A. Lopez	Interim Elementary Principal Bowman Foster Ashe Elementary School	P1	Elementary Principal Seminole Elementary School	P1	

SCHOOL-SITE ADMINISTRATIVE ASSIGNMENTS
PRINCIPALS

<u>NAME</u>	<u>CURRENT ASSIGNMENT</u>	<u>CURRENT PG</u>	<u>NEW ASSIGNMENT</u>	<u>NEW PG</u>	
Gloria I. Garcia	Elementary Assistant Principal Sunset Elementary School	AP	Interim Elementary Principal, Shenandoah Elementary School	P1	} A D D E D
Annette Y. Burks	Middle Assistant Principal Charles R. Drew Middle School	AP	Interim Middle Principal Charles R. Drew Middle School	P2	} A D D E D
Adrena Y. Williams	Senior Assistant Principal Dr. Michael M. Krop Senior High School	AP	Interim Elementary Principal Skyway Elementary School	P1	} A D D E D
Kimberly Y. Davis	Elementary Principal Dr. Edward L. Whigham Elementary School	P1	Principal, Vocational/Technical Robert Morgan Educational Center	P3	} A D D E D
Matty H. Jones	Return from DROP	P1	Elementary Principal Lorah Park Elementary School (Effective 05/03/2010)	P1	} A D D E D
Maribel B. Dotres	Elementary Assistant Principal Amelia Earhart Elementary School	AP	Interim Elementary Principal Amelia Earhart Elementary School	P1	} A D D E D
Jose R. Fernandez	Middle Assistant Principal Miami Lakes Middle School	AP	Interim Middle School Principal Country Club Middle School	P2	} A D D E D
Catalina Flor	Elementary Assistant Principal Kinloch Park Elementary School	AP	Interim Elementary Principal Phillis Wheatley Elementary School	P1	} A D D E D

SCHOOL-SITE ADMINISTRATIVE ASSIGNMENTS
PRINCIPALS

<u>NAME</u>	<u>CURRENT ASSIGNMENT</u>	<u>CURRENT PG</u>	<u>NEW ASSIGNMENT</u>	<u>NEW PG</u>	
Raul F. Garcia	Elementary Assistant Principal Goulds Elementary School	AP	Interim Elementary Principal Goulds Elementary School	P1	} A D D E D
Sharon Johnson	Middle School Principal Brownsville Middle School	P2	Elementary Principal Citrus Grove Elementary School	P1	
Felicia K. Joseph	Elementary Assistant Principal Leewood K-8 Center	AP	Interim Elementary Principal Gloria Floyd Elementary School	P1	
Catherine T. Krtausch	Elementary Assistant Principal Dr. William A. Chapman Elementary School	AP	Interim Elementary Principal Florida City Elementary School	P1	
Leonard T. Torres	Interim Middle Principal Allapattah Middle School	P2	Middle Principal Allapattah Middle School (Effective 07/16/2010)	P2	
John C. Lux	Elementary Principal Miami Heights Elementary School	P1	Middle School Principal Palmetto Middle School	P2	
Kerri A. Maysonet	Senior High Principal Homestead Senior High School	P3	Elementary Principal Pine Lake Elementary School	P1	

SCHOOL-SITE ADMINISTRATIVE ASSIGNMENTS
PRINCIPALS

<u>NAME</u>	<u>CURRENT ASSIGNMENT</u>	<u>CURRENT PG</u>	<u>NEW ASSIGNMENT</u>	<u>NEW PG</u>	
Sabrina J. Montilla	Elementary Assistant Principal Sunny Isles Beach Community School	AP	Interim Elementary Principal Crestview Elementary School	P1	} A D D E D
Lisa S. Noffo	Middle School Principal Palmetto Middle School	P2	Senior High Principal New World School of the Arts Senior High School	P3	
Josephine Otero	Senior Assistant Principal Coral Gables Senior High School	AP	Interim K-8 Center Principal Coral Way K-8 Center	P2	
Erica Y. Paramore-Respress	Middle Assistant Principal Brownsville Middle School	AP	Interim Elementary Principal Riverside Elementary School	P1	
Paul A. Pfeiffer	Middle Assistant Principal Homestead Middle School	AP	Interim Middle School Principal Campbell Drive Middle School	P2	
Amor Reyes	Elementary Assistant Principal Mae M. Walters Elementary School	AP	Interim Elementary Principal Sylvania Heights Elementary School	P1	
Jorge A. Rivas	Senior Assistant Principal Homestead Senior High School	AP	Interim Elementary Principal Miami Heights Elementary School	P1	
Lisa R. Robertson	Middle School Principal South Miami Middle Community School	P2	Senior High Principal Homestead Senior High School	P3	

SCHOOL-SITE ADMINISTRATIVE ASSIGNMENTS
PRINCIPALS

<u>NAME</u>	<u>CURRENT ASSIGNMENT</u>	<u>CURRENT PG</u>	<u>NEW ASSIGNMENT</u>	<u>NEW PG</u>	
Rennina L. Turner	Senior Assistant Principal Miami Central Senior High School	AP	Interim Senior High Principal Miami Central Senior High School	P3	} A D D E D
Lisa K. Wiggins	Elementary Assistant Principal Bob Graham Education Center	AP	Temporary Elementary Principal Flamingo Elementary School	P1	
Kevin N. Williams	Elementary Assistant Principal Arch Creek Elementary School	AP	Interim Elementary Principal Norwood Elementary School	P1	
Rouben J. Yaghdjian	Elementary Assistant Principal West Hialeah Gardens Elementary School	AP	Interim Elementary Principal Hialeah Gardens Elementary School	P1	

SCHOOL-SITE ADMINISTRATIVE ASSIGNMENTS
ASSISTANT PRINCIPALS

<u>NAME</u>	<u>CURRENT ASSIGNMENT</u>	<u>CURRENT PG</u>	<u>NEW ASSIGNMENT</u>	<u>NEW PG</u>	
Amy Abate	Returning from FLDOE	--	Elementary Assistant Principal Arch Creek Elementary School	AP	} A D D E D
Elianeys Basulto	Curriculum Support Specialist Region Center V	--	Elementary Assistant Principal Dr. William A. Chapman Elementary School	AP	
Luis Bonachea	Temporary Elementary Assistant Principal Riverside Elementary School	AP	Elementary Assistant Principal Frederick Douglass Elementary School	AP	
Floredenis G. Brown	Teacher Dr. Edward L. Whigham Elementary School	--	Elementary Assistant Principal Campbell Drive Elementary School	AP	
Mary J. Brown	Elementary Principal Martin Luther King Elementary School	P1	Elementary Assistant Principal South Hialeah Elementary School (Career redirection at the request of the incumbent)	AP	
Anthony D. Burns	Teacher John A. Ferguson Senior School	--	Senior Assistant Principal Coral Reef Senior High School	AP	
Ethel S. Burton	Teacher Howard D. McMillan Middle School	--	Middle Assistant Principal Howard A. Doolin Middle School	AP	

SCHOOL-SITE ADMINISTRATIVE ASSIGNMENTS
ASSISTANT PRINCIPALS

<u>NAME</u>	<u>CURRENT ASSIGNMENT</u>	<u>CURRENT PG</u>	<u>NEW ASSIGNMENT</u>	<u>NEW PG</u>	
Nicolina A. Catanese	Teacher Rockway Middle School	--	Middle Assistant Principal Hammocks Middle School	AP	} A D D E D
Sacha T. Challenger	Teacher Miami Edison Senior High School	--	Middle Assistant Principal Charles Drew Middle School	AP	
Beatriz C. Sears	Elementary Assistant Principal Dr. Henry Mack/West Little River Elementary School	AP	Senior Assistant Principal Westland Hialeah Senior High School	AP	} A D D E D
Theodore A. Cooper	Teacher/Curriculum Development Holmes Elementary School	--	Elementary Assistant Principal Charles R. Drew Elementary School	AP	
Janisha N. Inningham	Teacher Virginia A. Boone/Highland Oaks Elementary School	--	Elementary Assistant Principal William J. Bryan Elementary School	AP	} A D D E D
Maria D. Dearmas	Teacher Citrus Grove Elementary School	--	Elementary Assistant Principal Paul Laurence Dunbar Elementary School	AP	
Antonietta M. Digirolamo	Curriculum Support Specialist Language Arts / Reading	--	Senior Assistant Principal Miami Norland Senior High School	AP	} A D D E D
Jennifer O. Escandell	Returning from FLDOE	--	Elementary Assistant Principal Edison Park Elementary School	AP	
Maria G. Fernandez	Teacher Calusa Elementary School	--	Elementary Assistant Principal Oliver Hoover Elementary School	AP	} A D D E D

SCHOOL-SITE ADMINISTRATIVE ASSIGNMENTS
ASSISTANT PRINCIPALS

<u>NAME</u>	<u>CURRENT ASSIGNMENT</u>	<u>CURRENT PG</u>	<u>NEW ASSIGNMENT</u>	<u>NEW PG</u>	
John A. Galardi	Temporary Senior High Assistant Principal Felix Varela Senior High School	AP	Senior Assistant Principal Felix Varela Senior High School	AP	} A D D E D
Ada M. Gonzalez	Teacher Robert Morgan Educational Center	--	Senior Assistant Principal MAST at Homestead	AP	
Judy B. Gonzalez	Teacher Marcos A. Milam K-8 Center	--	Temporary Elementary Assistant Principal Bob Graham Education Center	AP	
James F. Jackimczuk	Teacher Marcos A. Milam K-8 Center	--	Elementary Assistant Principal Bob Graham Education Center	AP	
Renita L. Lee	Teacher Homestead Senior High School	--	Elementary Assistant Principal Mandarin Lakes K-8 Center	AP	
Regina P. Lowe-Smith	Elementary Principal Phillis Wheatley Elementary School	P1	Senior Assistant Principal North Central Virtual High School	AP	
Elizabeth Lozano	Teacher Kendale Lakes Elementary School	--	Temporary Elementary Assistant Principal Kendale Lakes Elementary School	AP	
Anita C. Marti	Teacher Hialeah Senior High School	--	Middle Assistant Principal Miami Lakes Middle School	AP	

SCHOOL-SITE ADMINISTRATIVE ASSIGNMENTS

ASSISTANT PRINCIPALS

<u>NAME</u>	<u>CURRENT ASSIGNMENT</u>	<u>CURRENT PG</u>	<u>NEW ASSIGNMENT</u>	<u>NEW PG</u>	
Anna M. Navarro	Curriculum Support Specialist Region Center I	--	Elementary Assistant Principal West Hialeah Gardens Elementary School	AP	} A D D E D
Marie H. Orth-Sanchez	Teacher Jane S. Roberts K-8 Center	--	Temporary Elementary Assistant Principal Norma Butler Bossard Elementary School	AP	
Cynthia D. Padron	Teacher Citrus Grove Middle School	--	Temporary Elementary Assistant Principal Shenandoah Elementary School	AP	
Kisa D. Parker	Curriculum Support Specialist Region Center III	--	Elementary Assistant Principal Kinloch Park Elementary School	AP	
Celethia V. Passmore	Teacher Coconut Palm K-8 Center	--	Elementary Assistant Principal Coconut Palm K-8 Center	AP	
Vicky Pestana-Rodriguez	Teacher Miami Springs Middle School	--	Middle Assistant Principal Miami Springs Middle School	AP	
Andrew B. Post	Teacher Miami Killian Senior High School	--	Senior Assistant Principal Homestead Senior High School	AP	
Amrita J. Prakash	Teacher Hammocks Middle School	--	Middle Assistant Principal Zelda Glazer Middle School	AP	

SCHOOL-SITE ADMINISTRATIVE ASSIGNMENTS
ASSISTANT PRINCIPALS

<u>NAME</u>	<u>CURRENT ASSIGNMENT</u>	<u>CURRENT PG</u>	<u>NEW ASSIGNMENT</u>	<u>NEW PG</u>	
Christopher W. Quarles	Teacher Young Womens Preparatory Academy	--	Middle Assistant Principal North Miami Middle School	AP	} A D D E D
Carl Robinson	Teacher Dr. Gilbert L. Porter Elementary School	--	Elementary Assistant Principal Caribbean Elementary School	AP	
Freddie L. Robinson	Teacher Hialeah Gardens Middle School	--	Middle Assistant Principal Miami Edison Middle School	AP	
Jean C. Saint-Phard	Teacher Lindsey Hopkins Technical Education Center	--	Community School Assistant Principal Charles R. Drew Middle School	AP	
Janeysa M. Sanchez	Teacher Jane S. Roberts K-8 Center	--	Elementary Assistant Principal Mae M. Walters Elementary School	AP	
Francisco M. Sauri	Teacher Miami Southridge Senior High School	--	Middle Assistant Principal Herbert A. Ammons Middle School	AP	
Isabel M. Siblesz	District Director, Employment Standards Human Resources	23	Community School Assistant Principal Coral Way K-8 Center (Career Redirection at the request of the incumbent)	AP	
Cynara Suarez	Teacher Southwest Miami Senior High School	--	Senior Assistant Principal TERRA Environmental Research Institute	AP	

SCHOOL-SITE ADMINISTRATIVE ASSIGNMENTS
ASSISTANT PRINCIPALS

<u>NAME</u>	<u>CURRENT ASSIGNMENT</u>	<u>CURRENT PG</u>	<u>NEW ASSIGNMENT</u>	<u>NEW PG</u>	
Linette Tellez	Teacher Henry M. Flagler Elementary School	--	Elementary Assistant Principal Dr. Henry W. Mack/West Little River Elementary School	AP	} A D D E D
Ottolita T. Thompson	Teacher Miami Northwestern Senior High School	--	Senior Assistant Principal Miami Northwestern Senior High School	AP	
Rebecca A. Watkins	ESE Placement Specialist Region Center V	--	Elementary Assistant Principal Jack D. Gordon Community Elementary School	AP	} A D D E D
Kevrette E. Wells	Curriculum Support Specialist Center for Professional Learning	--	Elementary Assistant Principal Van E. Blanton Elementary School	AP	
Kenneth L. Williams	Teacher Mandarin Lakes K-8 Center	--	Elementary Assistant Principal Mandarin Lakes K-8 Center	AP	} A D D E D
Nika L. Williams	Curriculum Support Specialist Region Center III	--	Vice Principal Miami Jackson Senior High School	VP	
Marchel D. Woods	Teacher Westview Middle School	--	Middle Assistant Principal Allapattah Middle School	AP	} A D D E D
Sonia J. Romero	Teacher John A. Ferguson Senior High School	--	Senior Assistant Principal Miami Springs Senior High School		
Vanessa De La Pena	Returning from FLDOE	--	Middle Assistant Principal Brownsville Middle School		} A D D E D

SCHOOL-SITE LATERAL ADMINISTRATIVE RE-ASSIGNMENTS
PRINCIPALS

<u>NAME</u>	<u>CURRENT ASSIGNMENT</u>	<u>CURRENT PG</u>	<u>NEW ASSIGNMENT</u>	<u>NEW PG</u>	
Maria P. Acosta	Elementary Principal Irving & Beatrice Peskoe Elementary School	P1	Elementary Principal Emerson Elementary School	P1	} A D D E D
Liliana C. Albuerne	Elementary Principal Emerson Elementary School	P1	Elementary Principal Irving & Beatrice Peskoe Elementary School	P1	
Evonne S. Alvarez	Middle School Principal Campbell Drive Middle School	P2	Middle School Principal South Miami Middle Community School	P2	
Gloria M. Arazoza	Elementary Principal Florida City Elementary School	P1	Elementary Principal Jack D. Gordon Community Elementary School	P1	
Sandra V. Banky	Elementary Principal Region Center I	P1	Elementary Principal Miami Park Elementary School	P1	
Ivette Bernal-Pino	Elementary Principal Hialeah Gardens Elementary School	P1	Elementary Principal Twin Lakes Elementary School	P1	
Carmen A. Boyd	Temporary Elementary Principal William J. Bryan Elementary School	P1	Interim Elementary Principal Phyllis Ruth Miller Elementary School	P1	
Maria D. Chappotin	Elementary Principal Village Green Elementary School	P1	Elementary Principal Colonial Drive Elementary School	P1	

SCHOOL-SITE LATERAL ADMINISTRATIVE RE-ASSIGNMENTS
PRINCIPALS

<u>NAME</u>	<u>CURRENT ASSIGNMENT</u>	<u>CURRENT PG</u>	<u>NEW ASSIGNMENT</u>	<u>NEW PG</u>	
Henry Fernandez	Elementary Principal Colonial Drive Elementary School	P1	Elementary Principal Village Green Elementary School	P1	} A D D E E D
Christopher J. Shinn	Senior High Principal Hialeah-Miami Lakes Senior High School	P3	Senior High Principal Law Enforcement School	P3	
Eliseo Hernandez	Elementary Principal Gloria Floyd Elementary School	P1	Interim Elementary Principal Bowman Foster Ashe Elementary School	P1	
Caleb Lopez	Elementary Principal Pine Lake Elementary School	P1	Elementary Principal Gulfstream Elementary School	P1	
Sharon M. Lopez	Elementary Principal Riverside Elementary School	P1	Elementary Principal Coral Terrace Elementary School	P1	
Susan J. Lyle	Elementary Principal Gulfstream Elementary School	P1	Elementary Principal Dr. Edward L. Whigham Elementary School	P1	

SCHOOL-SITE LATERAL ADMINISTRATIVE RE-ASSIGNMENTS
PRINCIPALS

<u>NAME</u>	<u>CURRENT ASSIGNMENT</u>	<u>CURRENT PG</u>	<u>NEW ASSIGNMENT</u>	<u>NEW PG</u>	
Melissa M. Mesa	Elementary Principal Crestview Elementary School	P1	Elementary Principal North County Elementary School	P1	} A D D E D
Prudence Mingo	Elementary Principal West Homestead Elementary School	P1	Elementary Principal Bel-Aire Elementary School	P1	
Martha M. Munoz	Elementary Principal Shenandoah Elementary School	P1	Elementary Principal Kinloch Park Elementary School	P1	
Columbus Williams	Elementary Principal Bel-Aire Elementary School	P1	Elementary Principal West Homestead Elementary School	P1	
Gregory Zawyer	Principal, Vocational/Technical Robert Morgan Educational Center	P3	Senior High Principal MAST at Homestead	P3	

SCHOOL-SITE LATERAL ADMINISTRATIVE RE-ASSIGNMENTS
ASSISTANT PRINCIPALS

<u>NAME</u>	<u>CURRENT ASSIGNMENT</u>	<u>CURRENT PG</u>	<u>NEW ASSIGNMENT</u>	<u>NEW PG</u>	
Maria A. Alonso	Elementary Assistant Principal Broadmoor Elementary School	AP	Community School Assistant Principal Eugenia B. Thomas K-8 Center	AP	} A D D E D
Mechi Anaut-Paget	Senior Assistant Principal Ronald W. Reagan/Doral Senior High School	AP	Senior Assistant Principal William H. Turner Technical Arts Senior High School	AP	
Inez O. Arias	Middle Assistant Principal Hialeah Middle School	AP	Middle Assistant Principal Lawton Chiles Middle School	AP	} A D D E D
Denise P. Barrett-Johnson	Middle Assistant Principal Southwood Middle School	AP	Middle Assistant Principal Lake Stevens Middle School	AP	
Joey Bautista	Adult Assistant Principal North Miami Senior Adult	AP	Adult Assistant Principal Miami Coral Park Adult	AP	} A D D E D
Allen N. Breeding	Elementary Assistant Principal Dr. Gilbert L. Porter Elementary School	AP	Elementary Assistant Principal Bowman Foster Ashe Elementary School	AP	
Contessa S. Bryant	Elementary Assistant Principal Campbell Drive Elementary School	AP	Middle Assistant Principal Campbell Drive Middle School	AP	} A D D E D
Ron A. Butler	Middle Assistant Principal Westview Middle School	AP	Senior Assistant Principal Hialeah-Miami Lakes Senior High School	AP	
Isabel D. Castillo	Elementary Assistant Principal Charles David Wyche, Jr. Elementary School	AP	Elementary Assistant Principal Lakeview Elementary School	AP	} A D D E D

SCHOOL-SITE LATERAL ADMINISTRATIVE RE-ASSIGNMENTS
ASSISTANT PRINCIPALS

<u>NAME</u>	<u>CURRENT ASSIGNMENT</u>	<u>CURRENT PG</u>	<u>NEW ASSIGNMENT</u>	<u>NEW PG</u>	
Maria B. Cervantes	Community School Assistant Principal Coral Way K-8 Center	AP	Elementary Assistant Principal Riverside Elementary School (Career redirection at the request of the incumbent)	AP	} A D D E D
Naif M. Chain	Middle Assistant Principal Centennial Middle School	AP	Elementary Assistant Principal Jack D. Gordon Community Elementary School	AP	
Elizabeth Chardon	Middle Assistant Principal Howard A. Doolin Middle School	AP	Elementary Assistant Principal Leewood K-8 Center	AP	
Sarah C. Collie	Elementary Assistant Principal Edison Park Elementary School	AP	Elementary Assistant Principal Oak Grove Elementary School	AP	
Beatriz Coto	Elementary Assistant Principal Lakeview Elementary School	AP	Elementary Assistant Principal Charles David Wyche, Jr. Elementary School	AP	
Philip D. Cox	Middle Assistant Principal North Miami Middle School	AP	Elementary Assistant Principal Linda Lentin K-8 Center	AP	
Tanya S. Daly-barnes	Middle Assistant Principal Miami Edison Middle School	AP	Elementary Assistant Principal Carol City Elementary School	AP	
Ana M. Del Cristo	Elementary Assistant Principal Miami Lakes K-8 Center	AP	Elementary Assistant Principal North Hialeah Elementary School	AP	

SCHOOL-SITE LATERAL ADMINISTRATIVE RE-ASSIGNMENTS
ASSISTANT PRINCIPALS

<u>NAME</u>	<u>CURRENT ASSIGNMENT</u>	<u>CURRENT PG</u>	<u>NEW ASSIGNMENT</u>	<u>NEW PG</u>	
Larhonda M. Donaldson	Middle Assistant Principal Campbell Drive Middle School	AP	Middle Assistant Principal Cutler Ridge Middle School	AP	} A D D E D
Eric L. Wright	Elementary Assistant Principal Robert Russa Moton Elementary School	AP	Middle Assistant Principal Centennial Middle School	AP	
Joseph A. Evans	Senior Assistant Principal Coral Reef Senior High School	AP	Senior Assistant Principal Coral Gables Senior High School	AP	
Julio Fong	Elementary Assistant Principal North County Elementary School	AP	Elementary Assistant Principal Sunny Isles Beach Community School	AP	
Harold J. Ford	Elementary Assistant Principal Mandarin Lakes K-8 Center	AP	Middle Assistant Principal Homestead Middle School	AP	
Gigi M. Gilbert	Elementary Assistant Principal Frederick Douglass Elementary School	AP	Elementary Assistant Principal Sunset Elementary School	AP	
Franklyn J. Glasford	Senior Assistant Principal Hialeah-Miami Lakes Senior High School	AP	Middle Assistant Principal Westview Middle School	AP	
Nelson L. Gonzalez	Middle Assistant Principal Henry H. Filer Middle School	AP	Middle Assistant Principal Hialeah Gardens Middle School	AP	

SCHOOL-SITE LATERAL ADMINISTRATIVE RE-ASSIGNMENTS
ASSISTANT PRINCIPALS

<u>NAME</u>	<u>CURRENT ASSIGNMENT</u>	<u>CURRENT PG</u>	<u>NEW ASSIGNMENT</u>	<u>NEW PG</u>	
Yvonne B. Grant	Elementary Assistant Principal South Hialeah Elementary School	AP	Elementary Assistant Principal Coconut Grove Elementary School	AP	} A D D E E D
Carlos Delcuadro	Senior Assistant Principal Westland Hialeah Senior High School	AP	Middle Assistant Principal South Miami Middle School	AP	
Ana M. Gutierrez	Senior Assistant Principal Booker T. Washington Senior High School	AP	Assistant Principal Coral Gables K-8 Center	AP	
Latoria M. Harris	Middle Assistant Principal Cutler Ridge Middle School	AP	Middle Assistant Principal South Dade Middle School	AP	
Barbara M. Hernandez	Elementary Assistant Principal Jack D. Gordon Community Elementary School	AP	Elementary Assistant Principal Bel-Aire Elementary School	AP	
Tierney E. Hunter	Temporary Middle School Assistant Principal Southwood Middle School	AP	Middle Assistant Principal Southwood Middle School	AP	
Victoria Jackson	Middle Assistant Principal Lake Stevens Middle School	AP	Senior Assistant Principal Dr. Michael M. Krop Senior High School	AP	
Tania L. Jones	Community School Assistant Principal Eugenia B. Thomas K-8 Center	AP	Elementary Assistant Principal Henry E. S. Reeves Elementary School (Career Redirection at the request of the incumbent)	AP	

SCHOOL-SITE LATERAL ADMINISTRATIVE RE-ASSIGNMENTS
ASSISTANT PRINCIPALS

<u>NAME</u>	<u>CURRENT ASSIGNMENT</u>	<u>CURRENT PG</u>	<u>NEW ASSIGNMENT</u>	<u>NEW PG</u>	
Jacqua J. Little	Middle Assistant Principal Ponce de Leon Middle School	AP	Elementary Assistant Principal Gateway Environmental K-8 Learning Center	AP	} A D D E D
Leslie J. Longfield	Elementary Assistant Principal Thena Crowder Elementary School	AP	Elementary Assistant Principal William J. Bryan Elementary School	AP	
Natalie S. Mack	Middle Assistant Principal Lawton Chiles Middle School	AP	Middle Assistant Principal Hialeah Middle School	AP	} A D D E D
Todd Meiklejohn	Adult Assistant Principal Miami Palmetto Senior Adult	AP	Adult Assistant Principal N Miami Senior Adult	AP	
...aria Medina	Senior Assistant Principal Miami Springs Senior High School	AP	Senior Assistant Principal Booker T. Washington Senior High School	AP	} A D D E D
Peter G. Melton	Senior Assistant Principal Miami Norland Senior High School	AP	Middle Assistant Principal Andover Middle School	AP	
Leonardo Mourino	Elementary Assistant Principal North Hialeah Elementary School	AP	Elementary Assistant Principal Amelia Earhart Elementary School	AP	} A D D E D
Clinton B. Neilly	Community School Assistant Principal Charles R. Drew Middle School	AP	Senior Assistant Principal South Miami Senior High School	AP	
Heather J. Parker	Elementary Assistant Principal Bowman Foster Ashe Elementary School	AP	Elementary Assistant Principal Dr. Gilbert L. Porter Elementary School	AP	} A D D E D

SCHOOL-SITE LATERAL ADMINISTRATIVE RE-ASSIGNMENTS
ASSISTANT PRINCIPALS

<u>NAME</u>	<u>CURRENT ASSIGNMENT</u>	<u>CURRENT PG</u>	<u>NEW ASSIGNMENT</u>	<u>NEW PG</u>	
Ramon L. Raiford	Elementary Assistant Principal Carol City Elementary School	AP	Middle Assistant Principal Jose de Diego Middle School	AP	} A D D E D
Leonor Ravelo	Senior Assistant Principal Miami Killian Senior High School	AP	Senior Assistant Principal G. Holmes Braddock Senior High School	AP	
Ericka D. Reed	Elementary Assistant Principal Linda Lentin K-8 Center	AP	Elementary Assistant Principal Thena Crowder Elementary School	AP	
Lajeane R. Reed	Elementary Assistant Principal Caribbean Elementary School	AP	Elementary Assistant Principal Goulds Elementary School	AP	
Deborah G. Riera	Middle Assistant Principal South Dade Middle School	AP	Middle Assistant Principal Homestead Middle School	AP	
Lissett C. Robayna	Elementary Assistant Principal Bob Graham Education Center	AP	Elementary Assistant Principal Miami Lakes K-8 Center	AP	
Edward G. Robinson	Senior Assistant Principal G. Holmes Braddock Senior High School	AP	Senior Assistant Principal Miami Killian Senior High School	AP	

SCHOOL-SITE LATERAL ADMINISTRATIVE RE-ASSIGNMENTS
ASSISTANT PRINCIPALS

<u>NAME</u>	<u>CURRENT ASSIGNMENT</u>	<u>CURRENT PG</u>	<u>NEW ASSIGNMENT</u>	<u>NEW PG</u>	
Gisela B. Rodriguez	Senior Assistant Principal Barbara Goleman Senior High School	AP	Middle Assistant Principal Miami Lakes Middle School	AP	} A D D E D
Vivian B. Rodriguez	Elementary Assistant Principal Riverside Elementary School	AP	Elementary Assistant Principal Emerson Elementary School	AP	
Mary C. Roque	Elementary Assistant Principal Jack D. Gordon Community Elementary School	AP	Adult Assistant Principal Miami Palmetto Senior Adult	AP	
Gabriel Salgado	Middle Assistant Principal Jose de Diego Middle School	AP	Elementary Assistant Principal Key Biscayne K-8 Center	AP	
Carol R. Sampson	Middle Assistant Principal Region Center III	AP	Elementary Assistant Principal Kelsey L. Pharr Elementary School	AP	
Jeanette Sierra-Funcia	Middle Assistant Principal Allapattah Middle School	AP	Middle Assistant Principal Ponce de Leon Middle School	AP	
Gwendolyn I. Stewart	Temporary Elementary Assistant Principal Oak Grove Elementary School	AP	Elementary Assistant Principal North County Elementary School	AP	

SCHOOL-SITE LATERAL ADMINISTRATIVE RE-ASSIGNMENTS
ASSISTANT PRINCIPALS

<u>NAME</u>	<u>CURRENT ASSIGNMENT</u>	<u>CURRENT PG</u>	<u>NEW ASSIGNMENT</u>	<u>NEW PG</u>	
Lydia T. Vidal	Senior Assistant Principal William H. Turner Technical Arts Senior High School	AP	Senior Assistant Principal Ronald W. Reagan/Doral Senior High School	AP	} A D D E D
Jacqueline L. Villazon	Middle Assistant Principal Hialeah Gardens Middle School	AP	Middle Assistant Principal Henry H. Filer Middle School	AP	
Calondria E. Williams	Middle Assistant Principal Hammocks Middle School	AP	Elementary Assistant Principal Robert Russa Moton Elementary School	AP	
Janell K. Wyartt	Elementary Assistant Principal Henry E. S. Reeves Elementary School	AP	Elementary Assistant Principal Broadmoor Elementary School	AP	

NON-SCHOOL-SITE ADMINISTRATIVE ASSIGNMENTS

<u>NAME</u>	<u>CURRENT ASSIGNMENT</u>	<u>CURRENT PG</u>	<u>NEW ASSIGNMENT</u>	<u>NEW PG</u>
Helen S. Blanch	Administrative Director, Business Services, Office of the Superintendent	24	Assistant Superintendent, School Choice, School Operations	25
Maria L. Izquierdo	Returning from FLDOE	--	Administrative Director, Business Services, School Operations (Above minimum compensation)	24
Alexis L. Martinez	Region Administrative Director, Region IV	24	Region Superintendent, Region IV	25
Julio Miranda	District Director Compliance and Investigative Audits, Audit and Investigative Affairs.	23	Assistant Chief Auditor and Investigative Affairs, Audit and Investigative Affairs (This position reports to a direct report of the Board)	24
Ava G. Byrne	Assistant Superintendent, Professional Development and Educational Services, Curriculum and Instruction	25	Administrative Director, Exceptional Student Education, Curriculum and Instruction	24
Frederic E. Conde	Senior High Principal, New World School of the Arts, Senior High School	P3	Administrative Director, School Operations, School Operations	24
George A. Nunez	Region Superintendent, School Operations	25	Administrative Director (Temporary), School Operations, School Operations	24
Tiffanie A. Pauline	Executive Director, School Choice, SCPO Charter Schools Operations	22	Administrative Director, SCPO Charter Schools Operations	24
Ellen O. Wright	Assistant Superintendent, Curriculum and Instruction, School Improvement and Accountability	25	Accountability Officer, NCLB Parental Choice Options	24
Diana Urbizu	Assistant Superintendent, Labor Relations, Labor Relations	25	Administrative Director, Labor Relations, Labor Relations	24
Will J. Gordillo	Administrative Director, Exceptional Student Education, ESE	24	District Director, EH/SED Program, ESE	23

A
D
D
E
D

NON-SCHOOL-SITE ADMINISTRATIVE ASSIGNMENTS

<u>NAME</u>	<u>CURRENT ASSIGNMENT</u>	<u>CURRENT PG</u>	<u>NEW ASSIGNMENT</u>	<u>NEW PG</u>
Alfredia D. Robinson	Interim Elementary Principal, North County Elementary School	P1	Instructional Supervisor, Exceptional Student Education, Region Center I	21
Richard Lopez	Executive Director, Human Resources	22	District Director, Human Resources Human Resources	23
Robert D. Strickland	Executive Director, School Choice, SCPO Magnet/Innovative Programs	22	District Director, School Choice & Parental Options, SCPO Magnet/Innovative Programs	23
Caryl D. Grant	District Director, Curriculum Schools of Choice	23	Executive Director, School of Choice	22
Bernadette M. Montgomery	District Supervisor, Title I Administration Title I Project Administration	21	Executive Director, Title I Administration Title I Project Administration	22
Edgardo L. Reyes	District Supervisor, Bilingual, Title I Project Administration	21	Executive Director, Title I Administration, Title I Project Administration	22
Rosa Ugalde	English Second Language Westland Hialeah Senior High School	--	Executive Director, Curriculum Bilingual and World Languages	22
Terrence Vaccaro	Returning from FLDOE	--	Executive Director, Exceptional Student Education, Exceptional Student Education	22
Millard E. Lightburn	Curriculum Support Specialist CPL Staff Services	--	District Supervisor, Instructional Support Math/Science/Advanced Academics	21
Juan S. Oddone	Curriculum Support Specialist Math/Science/Advanced Academics	--	District Supervisor, Instructional Support Math/Science/Advanced Academics	21
William B. Wever, Jr.	Supervisor II, Property Loss Control Risk Benefits Management	44	Director, Property Loss Control, Risk Benefits Management	21
Michelle R. White	Curriculum Support Specialist Math/Science/Advanced Academics	--	District Supervisor, Instructional Support Math/Science/Advanced Academics	21

A
D
D
E
D

NON-SCHOOL-SITE ADMINISTRATIVE ASSIGNMENTS

<u>NAME</u>	<u>CURRENT ASSIGNMENT</u>	<u>CURRENT PG</u>	<u>NEW ASSIGNMENT</u>	<u>NEW PG</u>
Dwight A. Bernard	Principal on Assignment School Operations/ABC	P3	District Director School Choice and Parental Options SCPO Charter School Operations (Effective 5/19/2010)	23
Jorge L. Davila	Staff Assistant, Risk Management Risk Benefits Management	36	Accounts Receivables Supervisor Risk Benefits Management (Funded by Self-Insured Healthcare Administrative Fund)	20
Laurie A. Davis	Compensation Systems Specialist Compensation Administration	--	Supervisor, Compensation Compensation Administration	20
Liana Rangel	Budget Analyst, General Accounting	43	Accounts Receivable Supervisor, Office of the Controller	20
Rogelio F. Miret	Middle Assistant Principal Region II	AP	Staff Specialist Adult and Community Food and Nutrition (Effective 5/19/2010)	18
Nikolai P. Vitti	Returning from FLDOE	--	Assistant Superintendent Curriculum and Instruction, School Improvement and Accountability, Education Transformation and Performance (Grant Funded) (Above minimum compensation)	25

A
D
D
E
D

NON-SCHOOL-SITE LATERAL ADMINISTRATIVE RE-ASSIGNMENTS

<u>NAME</u>	<u>CURRENT ASSIGNMENT</u>	<u>CURRENT PG</u>	<u>NEW ASSIGNMENT</u>	<u>NEW PG</u>
Enid Weisman	Assistant Superintendent, School Operations, School Operations	25	Assistant Superintendent, Human Resources, Office of Human Resources	25
Martha M. Diaz	Executive Director, Capital Budget Planning Financial Ops/Budget	22	Executive Director, District Budget Financial Ops/Budget	22
Ruben Garcia	Director, Operations Management & Planning Capital Construction Budget and Control	21	Director, Operations Management & Planning Central Inspections	21

A
D
D
E
D

NON-SCHOOL-SITE ADMINISTRATIVE ASSIGNMENTS
PROFESSIONAL AND TECHNICAL

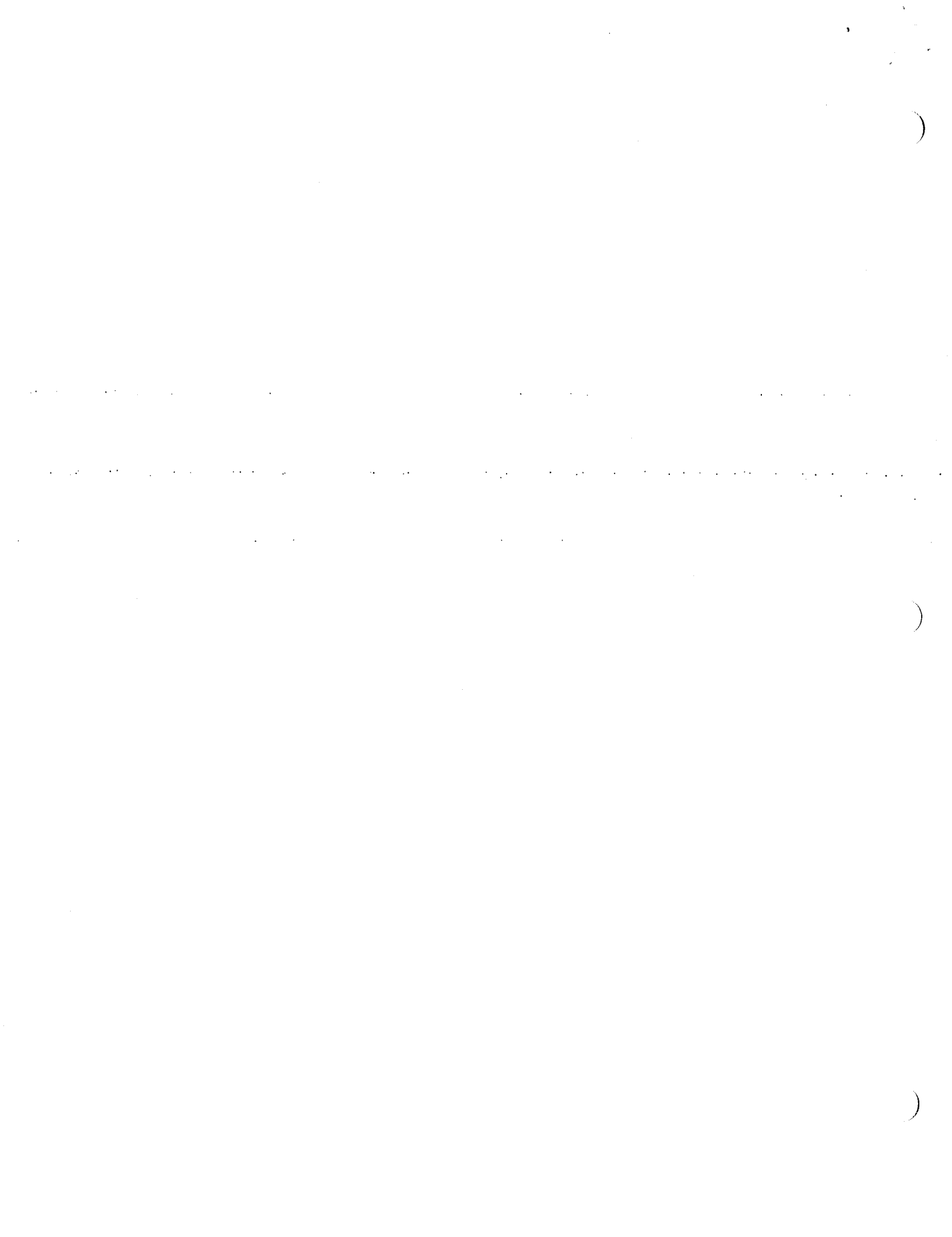
<u>NAME</u>	<u>CURRENT ASSIGNMENT</u>	<u>CURRENT PG</u>	<u>NEW ASSIGNMENT</u>	<u>NEW PG</u>
Donna L. McGinnis	Budget Supervisor Office of Budget Management	44	Audit Director Division of General Accounting	45
Worthy E. Fuentes	Budget Supervisor, Financial Operations/Budget	44	Budget Director, Financial Operations/Budget	45
Robin K. Carter	Manager III, Cost and Business Services, General Accounting	39	Coordinator II, Accounting, General Accounting	41
Julio I. Horstmann	Coordinator III, Facilities Operations Region Maintenance Center 5	42	Supervisor II, Facilities Operations Maintenance Service Center 5	44
Valentina Pasaron	Teacher/Trainer Instructional Materials and Textbook Services	--	Supervisor II, Textbook Services Instructional Materials and Textbook Services	44
Michelle Denis	Budget Supervisor Financial Ops/Budget	44	Budget Supervisor Charter Schools	44
Ana G. Ramos	Coordinator II, Operating Budget Financial Ops/Budget	41	Budget Supervisor Budget	44
Ronald R. Koon	Facility Inventory Specialist Facilities Operations, Maintenance	38	Facility Inventory Specialist Project and Contract Management	38
Eduardo Lopez	Project Manager II Capital Improvement Projects	43	Project Manager II District Inspections, Operations and Emergency Management	43
William E. Toth	Budget Supervisor Financial Ops/Budget	44	Budget Supervisor Treasury	44

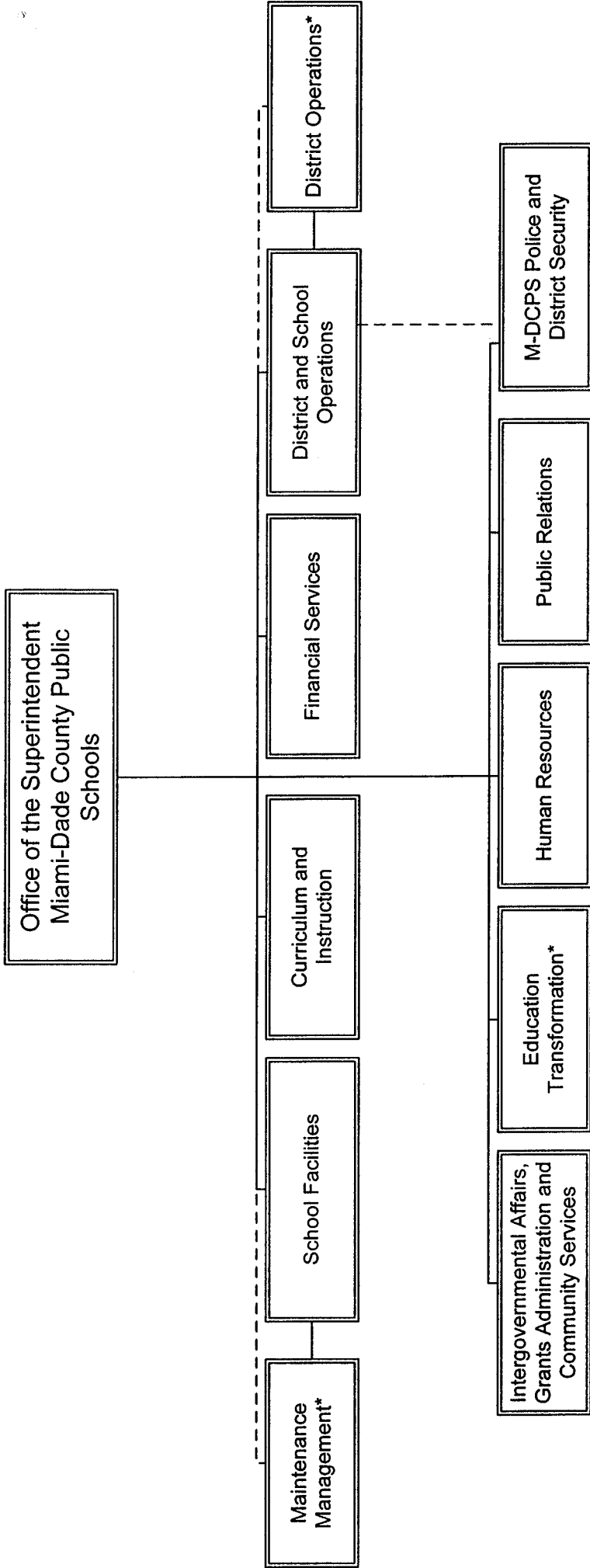
A
D
D
E
D

NON-SCHOOL-SITE ADMINISTRATIVE ASSIGNMENTS
SCHOOL POLICE

<u>NAME</u>	<u>CURRENT ASSIGNMENT</u>	<u>CURRENT PG</u>	<u>NEW ASSIGNMENT</u>	<u>NEW PG</u>
Gerald D. Kitchell	Lieutenant, Investigative Division	--	School Police Major, Operations Division and Headquarters	S3
Manuel J. Arrebola, Jr.	Sergeant, Special Projects and Patrol	--	School Police Captain, Special Projects and Patrol	S2
Carlos A. Fernandez	Lieutenant, South Operations Station 6	--	School Police Captain, North Operations Station 1	S2
Deanna L. Fox-Williams	Lieutenant, Administrative Division	--	School Police Commander, Investigative Division	S1
Edwin Lopez	Sergeant, Operations Division and Headquarters	--	School Police Commander, Operations Division and Headquarters	S1

A
D
D
E
D





* Education Transformation directs school improvement efforts required by the State (Grant Funded)
 Maintenance Management, dotted reporting line to the Office of the Superintendent
 District Operations – dotted reporting line to the Office of the Superintendent
 Business Services reports to School Operations, formerly a direct report to the Superintendent of Schools

