

Office of School Facilities
Jaime G. Torrens, Chief Facilities Officer

**SUBJECT: AUTHORIZATION FOR THE CHAIR AND SECRETARY TO EXECUTE A GRANT OF EASEMENT AGREEMENT FOR A WATER LINE AT MIAMI CENTRAL SENIOR HIGH SCHOOL, LOCATED AT 1781 NW 95 STREET, AND TO CONVEY THE SUBJECT UTILITY LINE IN FAVOR OF AND TO MIAMI-DADE COUNTY
PROJECT NO. A0101303**

COMMITTEE: FACILITIES AND CONSTRUCTION REFORM

LINK TO STRATEGIC FRAMEWORK: FINANCIAL EFFICIENCY/STABILITY

In order to maintain a water line constructed to service Miami Central Senior High School, Miami-Dade County has requested a Grant of Easement Agreement from the District for the subject water line, as well as the conveyance of said line. The 12-foot wide easement will cover the area of the water line installation, as more specifically described in Exhibit "A", attached hereto.

The Grant of Easement Agreement and conveyance documents will be reviewed and approved by the School Board Attorney's Office prior to execution. The Office of School Facilities recommends approval of both documents.

RECOMMENDED: That The School Board of Miami-Dade County, Florida, authorize the Chair and Secretary to execute a Grant of Easement Agreement for a water line at Miami Central Senior High School, located at 1781 NW 95 Street, and to convey the subject utility line (project no. A0101303) in favor of and to Miami-Dade County, as described above.

LML

F - 21

SKETCH TO ACCOMPANY LEGAL DESCRIPTION
OF
PHASE 2 - WATER LINE EASEMENT AT
MIAMI CENTRAL SENIOR HIGH SCHOOL PROJECT: DW.2007-193
1781 N.W. 95th STREET, MIAMI
MIAMI-DADE COUNTY, FLORIDA
THIS IS NOT A SURVEY

LEGAL DESCRIPTION: PHASE 2

A 12 FOOT WIDE WATER MAIN EASEMENT OVER A STRIP OF LAND LYING AND BEING A PORTION OF THE SOUTHEAST 1/4, OF THE NORTHEAST 1/4 OF SECTION 3, TOWNSHIP 53 SOUTH, RANGE 41 EAST, MIAMI-DADE COUNTY, FLORIDA, CENTERED ON THE FOLLOWING CENTERLINE BEING MORE PARTICULARLY DESCRIBED AS FOLLOWS:

COMMENCE AT THE SOUTHWEST CORNER OF THE SOUTHEAST 1/4, OF THE NORTHEAST 1/4, OF SAID SECTION 3, TOWNSHIP 53 SOUTH, RANGE 41 EAST; THENCE RUN NORTH 2°07'03" WEST ALONG THE WEST LINE OF THE SOUTHEAST 1/4, OF THE NORTHEAST 1/4 OF SAID SECTION 3 FOR A DISTANCE OF 681.67 FEET; THENCE RUN NORTH 87°49'19" EAST FOR A DISTANCE OF 608.81 FEET TO THE "CENTERLINE POINT OF TERMINATION" OF THE "PHASE 1" EASEMENT AS RECORDED IN OFFICIAL RECORD BOOK 26715, PAGE 4291 OF THE PUBLIC RECORDS OF MIAMI-DADE COUNTY, FLORIDA AND ALSO BEING THE POINT OF BEGINNING OF THIS PHASE 2, CENTERLINE OF A TWELVE FOOT WIDE STRIP OF LAND, BEING 6.00 FEET ON EACH SIDE OF THE FOLLOWING DESCRIBED CENTERLINE OF EASEMENT; THENCE CONTINUE NORTH 87°49'19" EAST ALONG SAID CENTERLINE FOR A DISTANCE OF 92.08 FEET; THENCE RUN SOUTH 2°10'41" EAST FOR A DISTANCE OF 28.70 FEET TO A POINT OF TERMINATION OF THE 12.00 FOOT WIDE WATER MAIN EASEMENT AND THE END OF THIS DESCRIBED EASEMENT.

A.R. TOUSSAINT & ASSOCIATES, INC.

LAND SURVEYORS
FLORIDA CERTIFICATE OF
AUTHORIZATION No. LB-273
620 N.E. 126 ST. NORTH MIAMI, FLORIDA 33161
ORDER No. 14523 DATE: 11/11/09

BY: Albert R. Toussaint PRES.

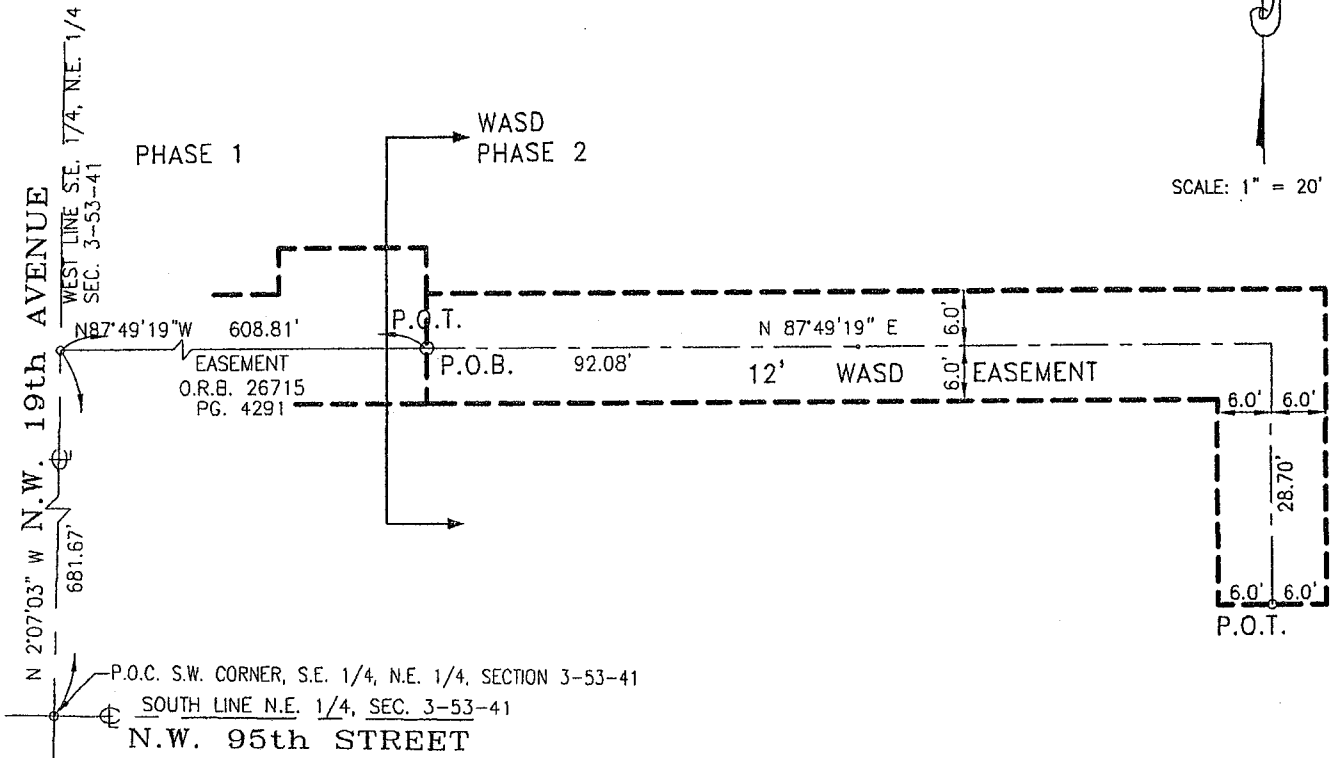
ALBERT R. TOUSSAINT
PROFESSIONAL SURVEYOR & MAPPER No. 907
PROFESSIONAL ENGINEER No. 8939
STATE OF FLORIDA

SHEET 1 OF 2

SKETCH TO ACCOMPANY LEGAL DESCRIPTION
OF
PHASE 2 - WATER LINE EASEMENT AT
MIAMI CENTRAL SENIOR HIGH SCHOOL PROJECT: DW.2007-193
1781 N.W. 95th STREET, MIAMI
MIAMI-DADE COUNTY, FLORIDA
THIS IS NOT A SURVEY



SCALE: 1" = 20'



LEGEND

- P.O.B. = POINT OF BEGINNING
- P.O.C. = POINT OF COMMENCEMENT
- P.O.T. = POINT OF TERMINATION

A.R. TOUSSAINT & ASSOCIATES, INC.

LAND SURVEYORS
FLORIDA CERTIFICATE OF
AUTHORIZATION No. LB-273
620 N.E. 126 ST. NORTH MIAMI, FLORIDA 33161
ORDER No. 14523 DATE: 11/11/09
SCALE: 1" = 20'

BY: *Albert R. Toussaint* PRES.

ALBERT R. TOUSSAINT
PROFESSIONAL SURVEYOR & MAPPER No. 907
PROFESSIONAL ENGINEER No. 8939
STATE OF FLORIDA

SHEET 2 OF 2