

Facilities Planning and Construction  
Paul J. Phillips, Chief Facilities Officer

**SUBJECT: GRANT OF EASEMENT TO FLORIDA POWER AND LIGHT COMPANY  
AT THE JOHN L SMITH ELEMENTARY SCHOOL SITE**

As a result of the construction of a Primary Learning Center (PLC) at John I. Smith Elementary School, Florida Power and Light Company (FP&L), has been asked to provide electrical service to the new PLC. FP&L has requested that an easement area be granted to provide this new service. The proposed easement will be located at the northwest section of the school site (see attached location map).

The said easement area is legally described as:

A strip of land lying and being on the North ½ of Section 20, Township 53 South, Range 40 East, Miami-Dade County, Florida, being more particularly described as follows:

Commence at the northwest corner of said Section 20 and run North 88 degrees 34 minutes 22 seconds East along the North line of said Section 20 for 2,632.22 feet to the North 1/4 corner of said Section 20; thence South 584.70 feet to a point of curvature; thence Southeasterly along a circular curve to the left having a radius of 1909.86 feet and a center angle of 26 degrees 48 minutes 51 seconds for an arc distance of 893.81 feet; thence South 63 degrees 11 minutes 9 seconds West radial to the last described curve for 188.62 feet; thence North 86 degrees 42 minutes 18 seconds West for 539.98 feet; thence continue North 86 degrees 42 minutes 18 seconds West for 460.02 feet; to the point of beginning; thence South 6 degrees 59 minutes 53 seconds West for 41.17 feet to a point of curvature; thence Southwesterly along a circular curve to the right, having a radius of 575.00 feet and a central angle of 3 degrees 15 minutes 4 seconds for an arc distance of 32.63 feet; thence N79°45'03"W for 10.00 feet; thence run Northeasterly along a circular curve to the left having a radius of 585.00 feet and a central angle of 03 degrees 15 minutes 04 seconds and for arc distance of 33.19 feet; thence N06°59'53"E for 41.82 feet; thence N86°42'18"W for 10.02 to the point of beginning. Containing 744 square feet or 0.02 acres more or less.

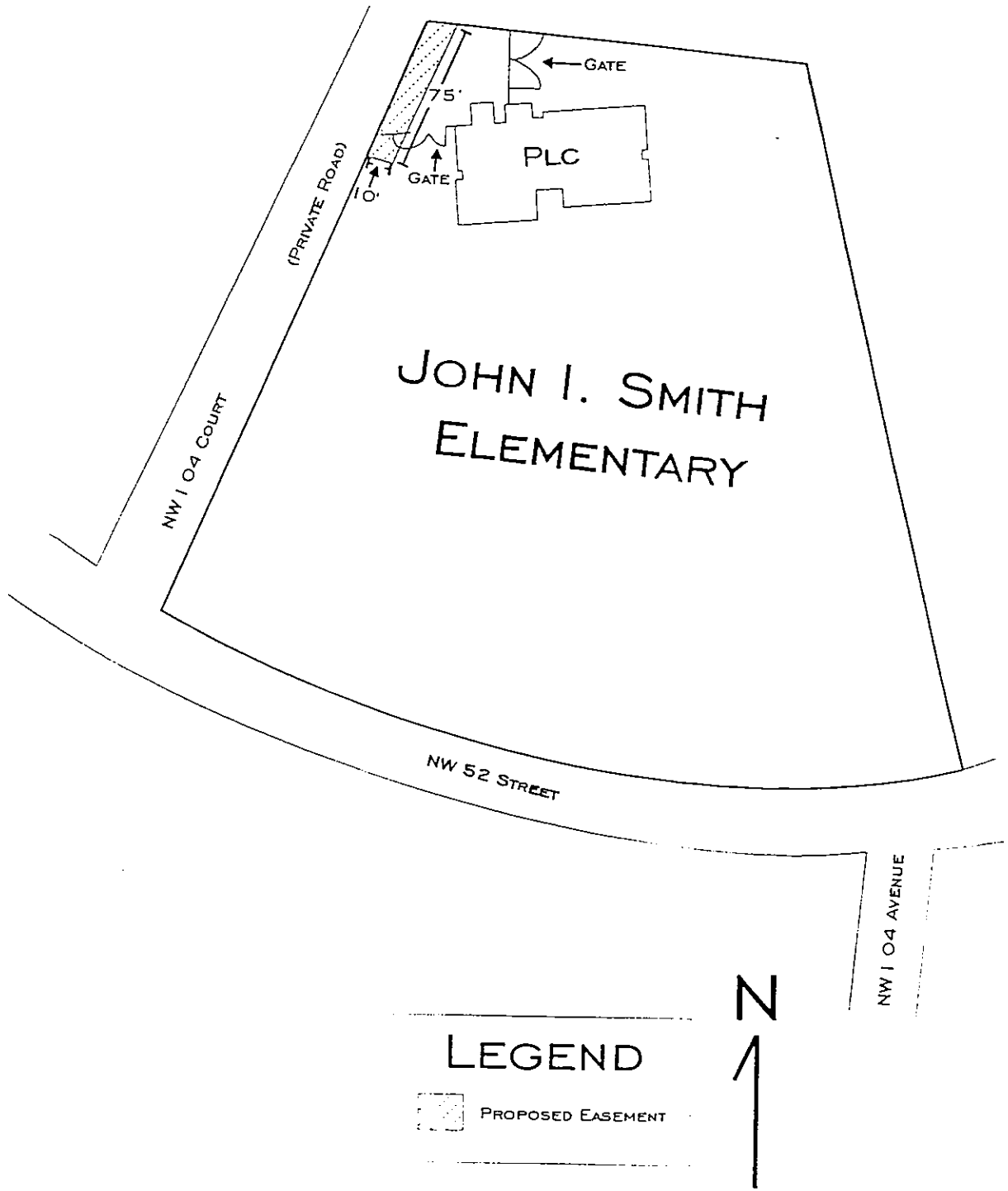
The grant of easement document has been reviewed by the School Board Attorney 's Office and the Office of Risk and Benefits Management. The principal of John I. Smith Elementary School and the Region Superintendent for Region III recommend approval of the grant of easement. The Office of Capital Improvement Projects, the Division of Roofing and Plant Operations, and the Department of Safety, Environment and Hazards Management are in agreement with the proposed grant of easement.

**RECOMMENDED:**

That The School Board of Miami-Dade County, Florida, authorize the Chair and the Secretary to execute a grant of easement agreement with Florida Power and Light Company, for the provision of an easement as described above, on the John I. Smith Elementary School site.

JEM:slr

# LOCATION MAP



## LEGEND

 PROPOSED EASEMENT

