

Business Operations  
Facilities Planning  
Ana Rijo-Conde, AICP, Administrative Director

**SUBJECT: GRANT OF EASEMENT AGREEMENT TO FLORIDA POWER AND LIGHT COMPANY AT STATE SCHOOL "PPP"/JOHN A. FERGUSON SENIOR HIGH SCHOOL SITE, LOCATED AT SW 56<sup>TH</sup> STREET AND SW 162<sup>ND</sup> AVENUE, MIAMI, FLORIDA**

**COMMITTEE: FACILITIES PLANNING AND CONSTRUCTION**

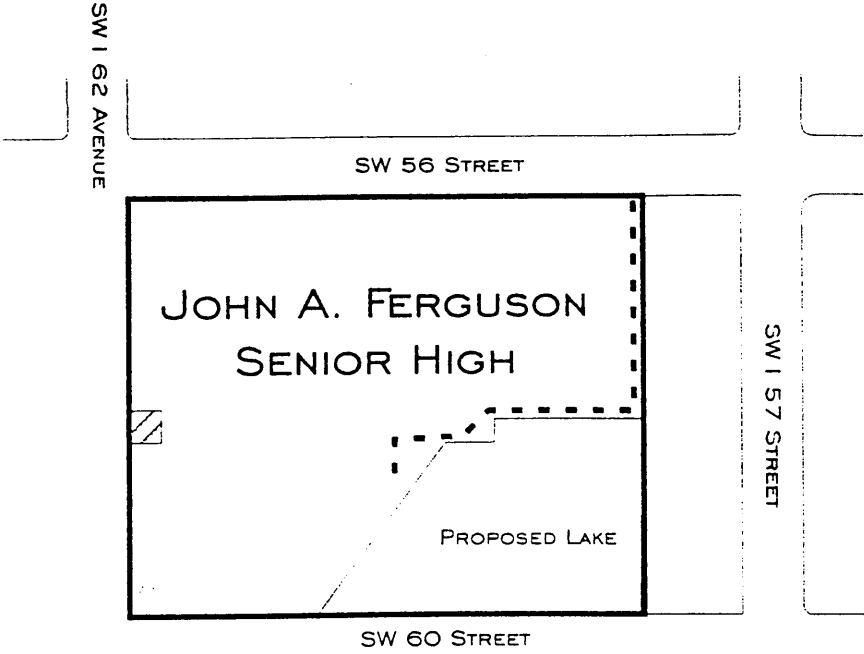
In connection with construction of new State School "PPP"/John A. Ferguson Senior High School (School), the Florida Power & Light Company (FP&L), has been asked to provide electrical service to the School. As a result, FP&L has requested that two (2) easements be granted for the service, at the locations depicted on Attachments A & B.

A grant of easement agreement (agreement), will be reviewed by the School Board Attorney's Office and the Office of Risk and Benefits Management prior to execution. The Region V Superintendent recommends approval of the agreement. The Office of Capital Improvement Projects, the Department of Safety, Environmental and Hazards Management, and the Department of Relocatables and Special Projects also concur with the agreement.


**RECOMMENDED:** That The School Board of Miami-Dade County, Florida, authorize the Chair and the Secretary to execute a Grant of Easement Agreement with Florida Power & Light Company, as described above, at State School "PPP"/John A. Ferguson Senior High School site.

JG:am

# LOCATION MAP



### LEGEND

-----	F.P. & L. EASEMENT
	F.P. & L. EASEMENT



LOCATION SKETCH ATTACHMENT A

WEST LINE OF TRACTS 4 AND 13 OF  
 "MIAMI EVERGLADE LAND COMPANY LTD."  
 PLAT BOOK 2, PAGE 3

SW 162nd AVENUE

"PELICAN'S POINT AT MILLER"  
 PLAT BOOK 150, AT PAGE 86

SW 56TH STREET - MILLER DRIVE



SCALE: 1"=200'

SECTION 29, TOWNSHIP 54 SOUTH, RANGE 39 EAST

MIAMI EVERGLADE LAND Co. LTD.  
 (P.B. 2, PG. 3)

SW 60th ST.

SOUTH LINE OF TRACTS 13, 14 & 15 OF  
 "MIAMI EVERGLADE LAND COMPANY LTD."  
 PLAT BOOK 2, PAGE 3

SW 60th ST.

TRACT 13

TRACT 4

TRACT 14

TRACT 3

TRACT 2

TRACT 15

PROPOSED LAKE

P.O.T.

10' F.P. & L. EASEMENT

10' F.P. & L. EASEMENT

P.O.B.

EAST LINE OF TRACTS 2 AND 15 OF  
 "MIAMI EVERGLADE LAND COMPANY LTD."  
 PLAT BOOK 2, PAGE 3

P.O.C.

SHEET 1 OF 3

K:\DCPS\PPP\FPL-PP\DWG\PPP-FP&L EASEM.DWG

REVISIONS

**SCHWEBKE-SHISKIN & ASSOCIATES, INC LB # 87**

LAND SURVEYORS-ENGINEERS-LAND PLANNERS - 3240 CORPORATE WAY-MIRAMAR, FL 33025  
 PHONE No.(954)435-7010 FAX No. (954)438-3288

ORDER NO. 186946  
 DATE: 08-27-02

PREPARED UNDER MY SUPERVISION  
 ROBERT F. JACKSON, PRESIDENT

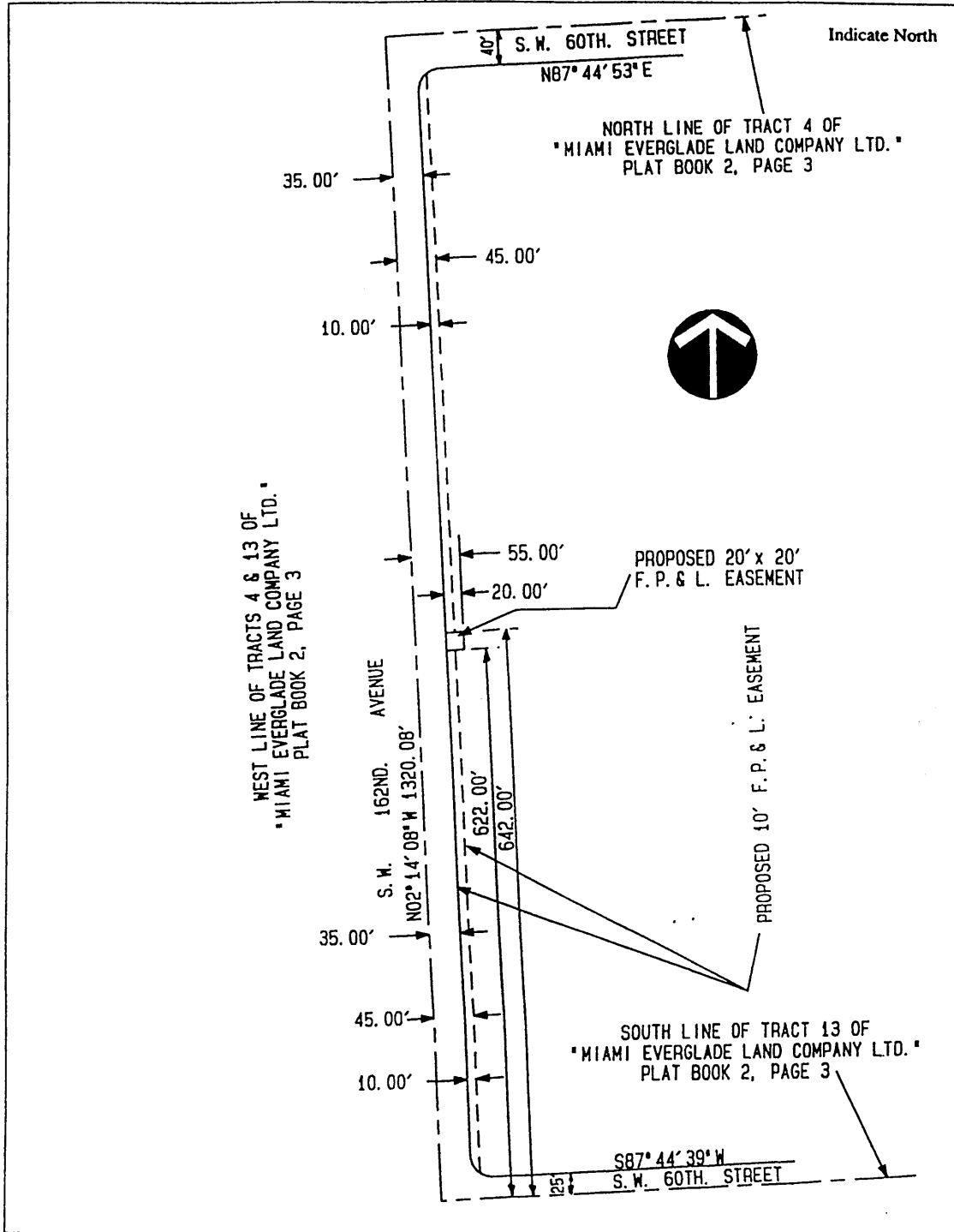
FLA. PROF. LAND SURVEYOR, N 2408



FPL Work Order No. \_\_\_\_\_

Form 3723, Pg. 2 (Stocked) Rev. 7/94

Reserved for Circuit Court



The East 10 feet of the West 45 feet of Tracts 4 and 13 LESS the North 40 feet thereof and LESS the South 25 feet thereof, TOGETHER WITH the North 20 feet of the South 642 feet of the East 20 feet of the West 55 feet of said Tracts 4 and 13 of "MIAMI EVERGLADE LAND COMPANY LTD.", according to the plat thereof as recorded in Plat Book 2, at Page 3 of the Public Records of Miami-Dade County, Florida.