

Business Operations
Ofelia San Pedro, Deputy Superintendent

SUBJECT: **AUTHORIZATION TO ENTER INTO A GRANT OF EASEMENT AGREEMENT WITH FLORIDA POWER AND LIGHT COMPANY FOR STATE SCHOOL "NNN", ON THE CAMPUS OF SOUTH MIAMI SENIOR HIGH SCHOOL, LOCATED AT 6856 SW 53 STREET**

COMMITTEE: **FACILITIES AND CONSTRUCTION REFORM**

In connection with the construction of State School "NNN", a 900-student station addition on the campus of South Miami Senior High School (School), Florida Power & Light Company (FP&L) has been asked by the District to provide additional underground electrical service. As a result, FP&L has requested that an easement be granted, comprised of 11,415 square feet, more or less, to provide electric service at the School (See Exhibit "A").

A Grant of Easement Agreement (Agreement), will be reviewed and approved by the School Board Attorney's Office and the Office of Risk and Benefits Management prior to execution. The Principal and the Region V Superintendent recommend approval of the Agreement. The Office of Capital Improvement Projects, the Department of Safety, Environment and Hazards Management, the Department of Relocatables and Special Projects, the Department of Advanced Planning and the Department of Maintenance Operations also concur with the proposed Agreement.

RECOMMENDED: That The School Board of Miami-Dade County, Florida, authorize the Chair and the Secretary to execute a Grant of Easement Agreement with Florida Power & Light Company for the construction of State School "NNN", on the campus of South Miami Senior High School, as described above.

CDR:rr

F - 17

EXHIBIT "A"
15 FOOT F P & L EASEMENT

A strip of land 15 feet in width, located in Tract "A" of the plat of "SOUTH MIAMI SENIOR HIGH SCHOOL" according to the plat thereof, recorded in Plat Book 85, Page 50 of the Public Records of Miami-Dade County, Florida, being more particularly described as:

The South 15.0 feet of the West 443.50 feet of said Tract "A", and the East 15.0 feet of the West 443.50 feet of the North 285.00 feet of the South 300.00 feet of said Tract "A", and the East 17.50 feet of the West 461.00 feet of the North 15.00 feet of the South 300.00 feet of said Tract "A".

Note:

This is not a Boundary Survey.

The bearings shown are based on an assumed system whereby the South line of Tract "A" bears East from the Southwest corner of said Tract "A".

This Description and Sketch are not valid one without the other.

Certification:

I hereby certify that this Description and Sketch were made under my responsible charge on April 13, 2005, and meet the applicable minimum technical standards as set forth by the Board of Professional Surveyors and Mappers in Chapter 61G17-6 Florida Administrative Code; pursuant to section 472.027 Florida Statutes.

E. R. Brownell & Associates, Inc.

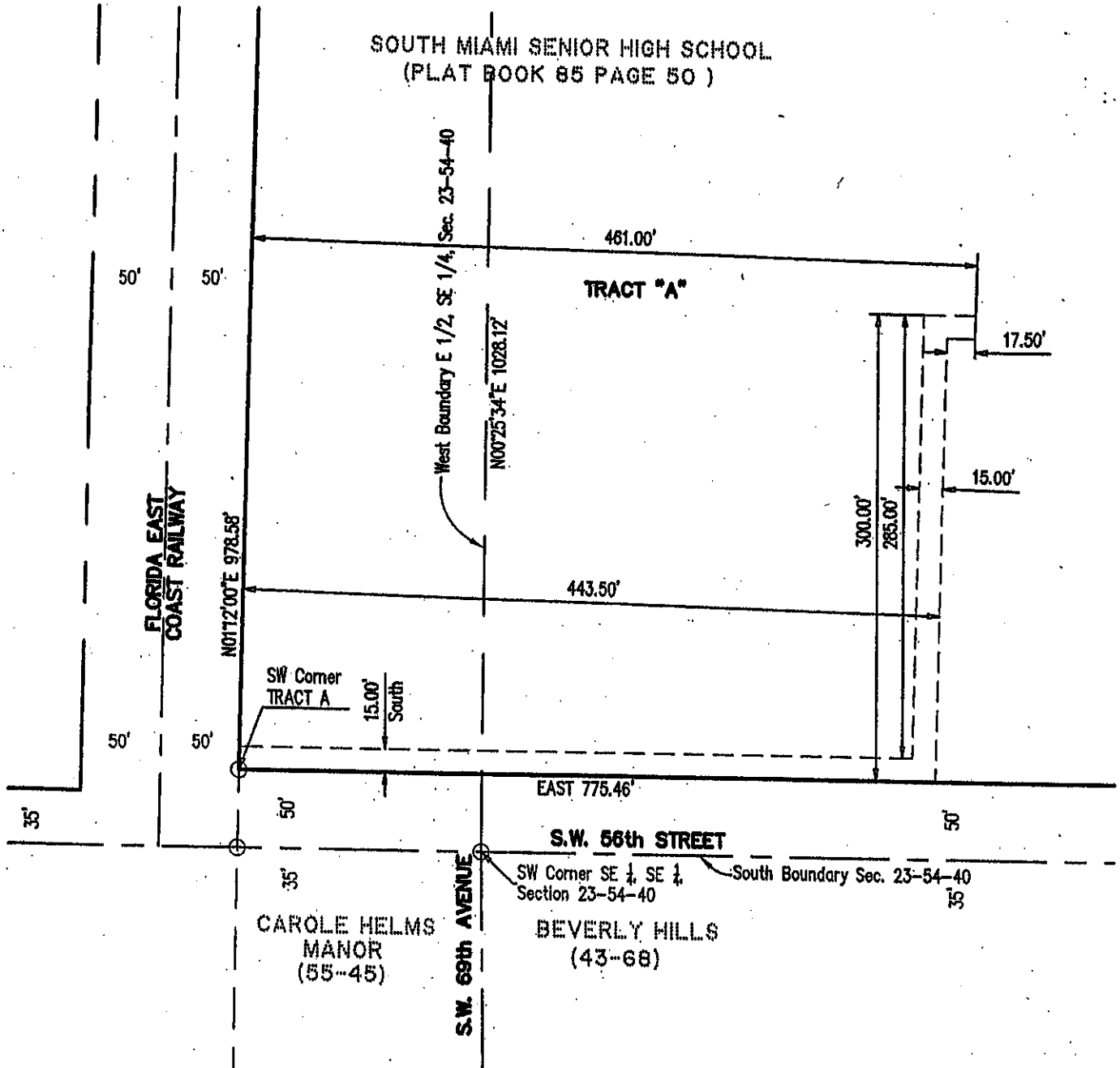


Thomas P. Brownell,
Executive Vice President
Professional Land Surveyor #2891
State of Florida

This Description and Sketch are not valid without the signature and raised seal of a Licensed Florida Surveyor and Mapper.

This Description and Sketch were Prepared by:
E. R. Brownell & Associates, Inc. (ERB No. 55860-Z2)
3152 Coral Way
Miami, Florida 33145

SKETCH TO ACCOMPANY LEGAL



P: \Proj\MDCPS\55860Z South Miami Sr. High School\dwg\55860Z FPL easement.dwg 4/13/2005 10:15:26 AM EDT

SOUTH MIAMI SENIOR HIGH SCHOOL
FPL EASEMENT

E.R. BROWNELL & ASSOC., INC.
CONSULTING ENGINEERS
3152 Coral Way
305.446.3511
LAND SURVEYORS
Miami, Florida, 33145
305.444.2034

Draw By: ALR Date: 04/06/05
Job #: 55860Z Scale: 1"=100'

Sketch No.: SM-1787