

Office of School Facilities
Jaime G. Torrens, Chief Facilities Officer

**SUBJECT: AUTHORIZATION TO GRANT A WATER LINE EASEMENT
LOCATED AT MIAMI CENTRAL SENIOR HIGH SCHOOL SITE
(PHASE I) AT 1781 NW 95 STREET, MIAMI, FLORIDA IN FAVOR
OF MIAMI-DADE COUNTY PROJECT NO. A01013**

COMMITTEE: FACILITIES AND CONSTRUCTION REFORM

**LINK TO
STRATEGIC PLAN: IMPROVE CONSTRUCTION SERVICES**

In order to maintain a water line easement constructed to provide adequate fire protection and water services to the Miami Central Senior High School site, Miami-Dade County has requested that a 12-foot wide water line easement be granted by the district.

The 12-foot wide water line easement described will cover the area of the water line installations at the 32-acre school site. This area is legally described in Exhibit "A", attached hereto.

The Grant of Easement will be reviewed for approval by the School Board's Attorneys Office prior to execution. In addition, the proposed easement has been reviewed and recommended by the Office of School Facilities. Public utility facilities constructed on Board-owned property will be conveyed, with appropriate easements, to Miami-Dade County for future maintenance and operations.

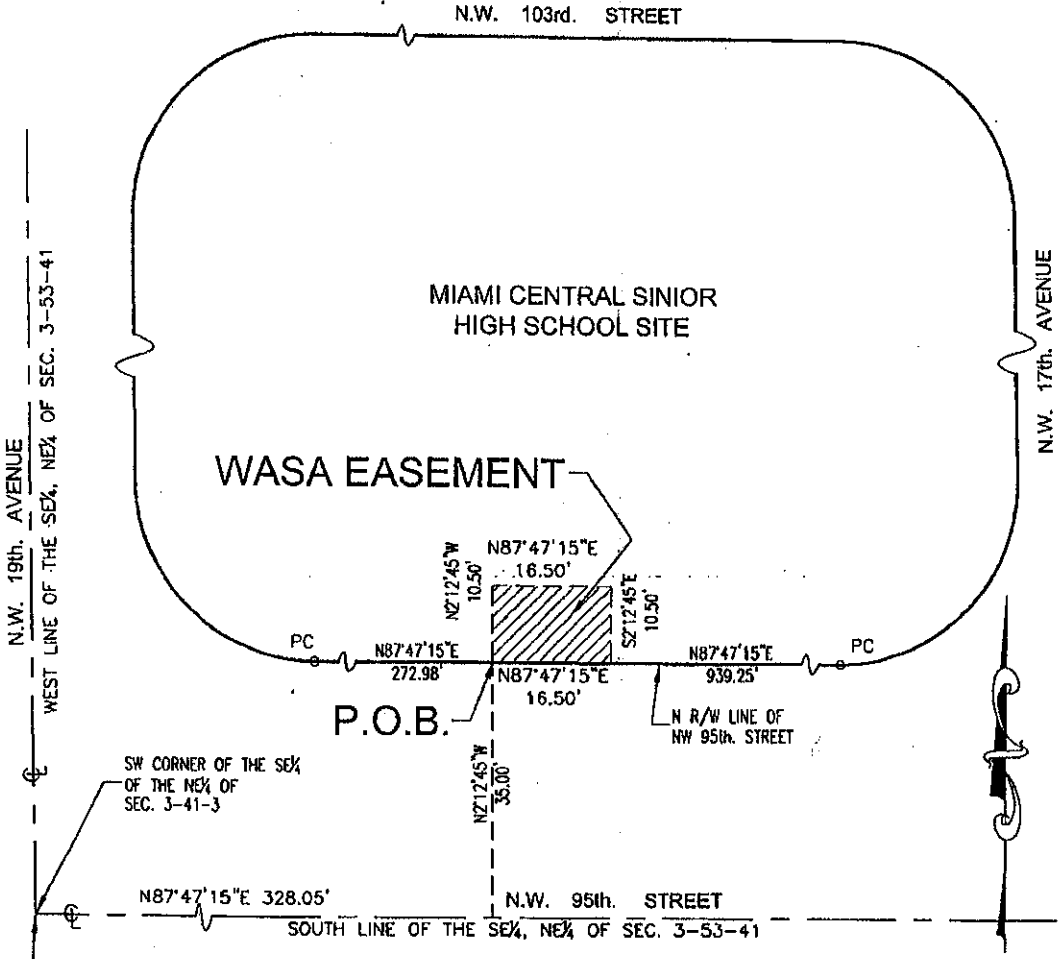
RECOMMENDED: That The School Board of Miami-Dade County, Florida, authorize the execution of the water line easement at the Miami Central Senior High School site (Phase I). Project No. A01013, in favor of Miami-Dade County.

LML

**SKETCH OF WASA EASEMENT
ACCOMPANYING LEGAL DESCRIPTION
MIAMI CENTRAL SINIOR HIGH SCHOOL
WB - 2007-005**

NOT TO SCALE

LEGAL DESCRIPTION OF EASEMENT: COMMENCE AT THE AT THE SW CORNER OF THE SE ¼ OF THE NE ¼ OF SECTION 3, TOWNSHIP 53 SOUTH, RANGE 41 EAST, MIAMI-DADE COUNTY, FLORIDA SAID POINT BEING THE INTERSECTION OF THE CENTERLINES OF NW 95th. STREET AND NW 19th. AVENUE, THENCE N87°47'15"E, ON AN ASSUMED BEARING AND ALONG THE CENTERLINE OF SAID NW 95th. STREET, FOR A DISTANCE OF 328.05 FEET; THENCE N2°12'45"W A DISTANCE OF 35.00 FEET TO A POINT ON THE NORTH RIGHT OF WAY LINE OF SAID NW 95th. STREET AND THE POINT OF BEGINNING; THENCE CONTINUE N2°12'15"W, FOR A DISTANCE OF 10.50 FEET; THENCE N87°47'15"E, FOR A DISTANCE OF 16.50 FEET; THENCE S2°12'45"E, FOR A DISTANCE OF 10.50 FEET TO A POINT ON THE NORTH RIGHT OF WAY LINE OF SAID NW 95th. STREET; THENCE S87°47'15"W, ALONG THE SAID RIGHT OF WAY LINE, A DISTANCE OF 16.50 FEET TO THE POINT OF BEGINNING.



LEGAL NOTES
THIS SURVEY DOES NOT REFLECT OR DETERMINE OWNERSHIP. EXAMINATION OF THE ABSTRACT OF TITLE WILL HAVE TO BE MADE TO DETERMINE RECORDED INSTRUMENTS, IF ANY, AFFECTING THE PROPERTY. THIS SURVEY IS SUBJECT TO DEDICATIONS, LIMITATIONS, RESTRICTIONS, RESERVATIONS OR EASEMENTS OF RECORDS. LEGAL DESCRIPTION PROVIDED BY CLIENT. THE LIABILITY OF THIS SURVEY IS LIMITED TO THE COST OF THE SURVEY UNDERGROUND ENCROACHMENTS, IF ANY, ARE NOT SHOWN FIRM HAS NOT ATTEMPTED TO LOCATE FOOTING AND/OR FOUNDATIONS AND/OR UNDERGROUND IMPROVEMENTS OF ANY NATURE. IF SHOWN, BEARINGS ARE REFERRED TO AN ASSUMED MERIDIAN. IF SHOWN, ELEVATIONS ARE REFERRED TO N.G.V.D. OF 1929.

LEGEND AND ABBREVIATIONS

A = ARC DISTANCE	CH = CHORD DISTANCE	DE = DISTANCE	HT & EQ. E.C. DIMENSION = HORIZONTAL & EQUAL DIMENSION	INT. = INTERIOR ANGLE	PL = PLANTING
A/C = AIR CONDITIONER PAZ.	CH & = CHORD BEARING	DR = DRIVE	LA = LATERAL DISTANCE	INT. = INTERIOR ANGLE	P.C.P. = PERMANENT CONTROL POINT
AL = ANCHOR EMBLEM	C = CURVE	DRIVE = DRIVE	LA = LATERAL DISTANCE	INT. = INTERIOR ANGLE	
ASPH. = ASPHALT	C/L OR C = CENTER LINE	DRIVE W. = DRIVE WAY	LA = LATERAL DISTANCE	INT. = INTERIOR ANGLE	
B/C = BRICK CONCRETE	CL = CHAIN LINK FENCE	E = EAST	LA = LATERAL DISTANCE	INT. = INTERIOR ANGLE	
B/D = BUILDING	CM = CHAIN LINK FENCE	ELEV. = ELEVATION	LA = LATERAL DISTANCE	INT. = INTERIOR ANGLE	
B.M. = BENCH MARK	CM = CHAIN LINK FENCE	ENC. = ENCROACHMENT	LA = LATERAL DISTANCE	INT. = INTERIOR ANGLE	
B.S.D. = BARS OF BEARINGS	CM = CHAIN LINK FENCE	ENC. = ENCROACHMENT	LA = LATERAL DISTANCE	INT. = INTERIOR ANGLE	
C = CURVE	CM = CHAIN LINK FENCE	ENC. = ENCROACHMENT	LA = LATERAL DISTANCE	INT. = INTERIOR ANGLE	
CA = CALCULATED DIMENSION	CM = CHAIN LINK FENCE	ENC. = ENCROACHMENT	LA = LATERAL DISTANCE	INT. = INTERIOR ANGLE	
CAE = CENTER BARS	CM = CHAIN LINK FENCE	ENC. = ENCROACHMENT	LA = LATERAL DISTANCE	INT. = INTERIOR ANGLE	
CAE = CONCRETE BLOCK DRIVEWAY	CM = CHAIN LINK FENCE	ENC. = ENCROACHMENT	LA = LATERAL DISTANCE	INT. = INTERIOR ANGLE	
CAE = CONCRETE BLOCK DRIVEWAY	CM = CHAIN LINK FENCE	ENC. = ENCROACHMENT	LA = LATERAL DISTANCE	INT. = INTERIOR ANGLE	
CAE = CONCRETE BLOCK DRIVEWAY	CM = CHAIN LINK FENCE	ENC. = ENCROACHMENT	LA = LATERAL DISTANCE	INT. = INTERIOR ANGLE	