

Office of School Facilities  
Jaime G. Torrens, Chief Facilities Officer

**SUBJECT:            AUTHORIZATION TO GRANT A WATER LINE EASEMENT  
                         LOCATED AT DR. MANUEL C. BARREIRO ELEMENTARY  
                         SCHOOL SITE AT 5125 SW 162 STREET, MIAMI, FLORIDA IN  
                         FAVOR OF MIAMI-DADE COUNTY  
                         PROJECT NO. A01032**

**COMMITTEE:                            FACILITIES AND CONSTRUCTION REFORM**

**LINK TO  
STRATEGIC PLAN:                    IMPROVE CONSTRUCTION SERVICES**

In order to maintain a water line easement constructed to provide adequate fire protection and water services to the Dr. Manuel C. Barreiro Elementary School site, Miami-Dade County has requested that a 12-foot wide water line easement be granted by the district.

The 12-foot wide water line easement described will cover the area of the water line installations at the 10-acre school site. This area is legally described in Exhibit "A", attached hereto.

The Grant of Easement will be reviewed and approved by the School Board's Attorneys Office prior to execution. In addition, the proposed easement has been reviewed and recommended by the Office of School Facilities. Public utility facilities constructed on Board-owned property will be conveyed, with appropriate easements, to Miami-Dade County for future maintenance and operations.

**RECOMMENDED:**    That The School Board of Miami-Dade County, Florida, authorize the execution of the water line easement at the Dr. Manuel C. Barreiro Elementary School site. Project No. A01032, in favor of Miami-Dade County.

LML

**F - 21**

Land Description  
STATE SCHOOL W-1  
MIAMI-DADE COUNTY PUBLIC SCHOOLS  
10'X12' WATERLINE BASEMENT

A portion of Tract 45, MIAMI EVERGLADE LAND CO. LTD. SUBDIVISION lying in Section 20, Township 54 South, Range 39 East, being more particularly described as follows:

COMMENCE at the Northwest corner of said Tract 45, thence North  $87^{\circ}44'26''$  East along the North line of said Tract 45 a distance of 25.00 feet; thence South  $02^{\circ}15'01''$  East along a line lying 25.00 feet east of and parallel with the west line of said Tract 45 a distance of 159.32 feet to the POINT OF BEGINNING; thence North  $87^{\circ}44'59''$  East a distance of 10.00 feet; thence South  $02^{\circ}15'01''$  East along a line lying 35.00 feet east of and parallel with the said west line of Tract 45 a distance of 12.00 feet; thence South  $87^{\circ}44'59''$  West a distance of 10.00 feet; thence North  $02^{\circ}15'01''$  West along a line lying 25.00 feet east of and parallel with the west line of said Tract 45 a distance of 12.00 feet to the POINT OF BEGINNING.

Said land situate, lying and being in Miami-Dade County, Florida containing 120 square feet more or less.

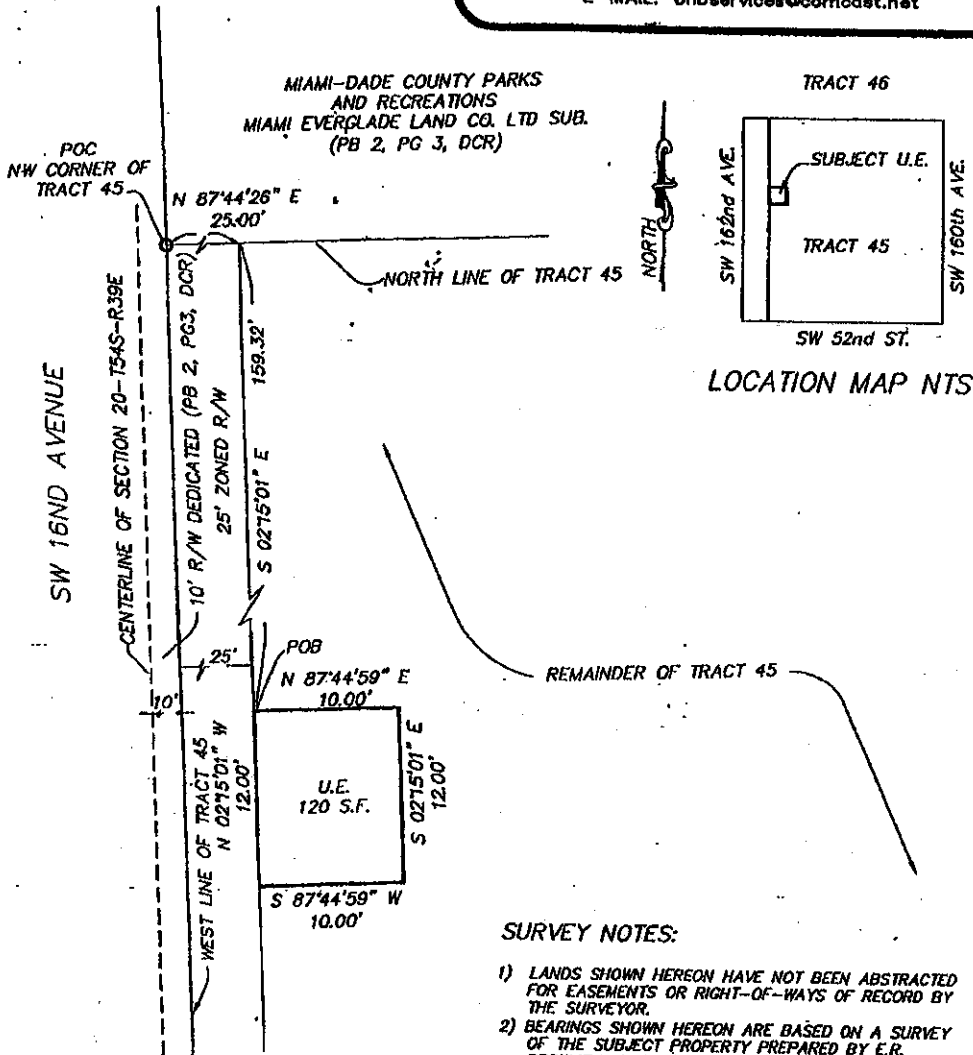
Prepared by:  
BNB SERVICES INC.  
11550 NW 21<sup>st</sup> Street  
Plantation, Florida 33323  
Phone: (954) 472-1031  
June 5, 2008  
Project No. 07-033.L1

STATE SCHOOL W1  
WATERLINE EASEMENT

SKETCH & LEGAL DESCRIPTION  
PREPARED BY  
BNB SERVICES, INC.  
LAND SURVEYORS

11550 NORTHWEST 21st. STREET  
PLANTATION, FLORIDA 33323  
PHONE & FAX: (854) 472-1031  
CELL: (854) 850-1833

E-MAIL: bnbervices@comcast.net



LOCATION MAP NTS

SURVEY NOTES:

- 1) LANDS SHOWN HEREON HAVE NOT BEEN ABSTRACTED FOR EASEMENTS OR RIGHT-OF-WAYS OF RECORD BY THE SURVEYOR.
- 2) BEARINGS SHOWN HEREON ARE BASED ON A SURVEY OF THE SUBJECT PROPERTY PREPARED BY E.R. BROWNELL & ASSOCIATES, INC.; PROJECT NO. 55860-BD, DATED 3/21/06; THE WEST LINE OF TRACT 45 BEARS N02°15'01\"W.
- 3) THIS SKETCH DOES NOT CONSTITUTE A BOUNDARY SURVEY AS SUCH.

LEGEND:

DCR	=	DADE COUNTY RECORDS
PB	=	PLAT BOOK
PG	=	PAGE
POB	=	POINT OF BEGINNING
POC	=	POINT OF COMMENCEMENT
R	=	RANGE
T	=	TOWNSHIP
R/W	=	RIGHT OF WAY

SURVEYOR'S CERTIFICATE:

I HEREBY CERTIFY THAT THIS SKETCH OF SURVEY OF THE PROPERTY DESCRIBED HEREON IS TRUE AND CORRECT TO THE BEST OF MY KNOWLEDGE AND BELIEF AS RECENTLY SURVEYED AND DRAWN UNDER MY SUPERVISION. THIS SURVEY COMPLIES WITH THE MINIMUM TECHNICAL STANDARDS SET FORTH BY THE FLORIDA STATE BOARD OF PROFESSIONAL SURVEYORS AND MAPPERS IN CHAPTER 61G17-6, FLORIDA ADMINISTRATIVE CODE, PURSUANT TO SECTION 472-027, FLORIDA STATUTES.

FOR THE FIRM:

*David G. Krause*  
DAVID G. KRAUSE  
PROFESSIONAL SURVEYOR & MAPPER  
FLORIDA REGISTRATION NO. 4066

FOR MORA ENGINEERING  
SCALE 1" = 10'  
SITE STATE SCHOOL W1  
SW 52nd STREET  
MIAMI-DADE COUNTY, FLORIDA  
SURVEY DATE: 08/05/08  
PROJECT #07-033