

Office of School Facilities
Jaime G. Torrens, Chief Facilities Officer

**SUBJECT: AUTHORIZATION TO GRANT A WATER LINE EASEMENT
LOCATED AT ZELDA GLAZER MIDDLE SCHOOL SITE AT
15015 SW 24 STREET, MIAMI, FLORIDA IN FAVOR OF MIAMI-
DADE COUNTY
PROJECT NO. A01020**

COMMITTEE: FACILITIES AND CONSTRUCTION REFORM

**LINK TO
STRATEGIC PLAN: IMPROVE CONSTRUCTION SERVICES**

In order to maintain a water line easement constructed to provide adequate fire protection and water services to the Zelda Glazer Middle School site, Miami-Dade County has requested that a 12-foot wide water line easement be granted by the district.

The 12-foot wide water line easement described will cover the area of the water line installations at the 9.9 acre school site. This area is legally described in Exhibit "A", attached hereto.

The Grant of Easement will be reviewed and approved by the School Board's Attorneys Office prior to execution. In addition, the proposed easement has been reviewed and recommended by the Office of School Facilities. Public utility facilities constructed on Board-owned property will be conveyed, with appropriate easements, to Miami-Dade County for future maintenance and operations.

RECOMMENDED: That The School Board of Miami-Dade County, Florida, authorize the execution of the water line easement at the Zelda Glazer Middle School site. Project No. A01020, in favor of the Miami-Dade County.

LML

SKETCH OF SURVEY

STATE SCHOOL U01 12' WIDE WATERLINE EASEMENT PROJECT

2008 AUG -6 PM 2:13

DESCRIPTION:

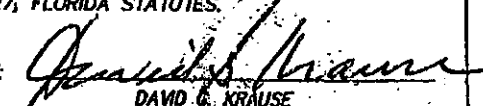
A PORTION OF TRACT W, "GRAND LAKES PHASE III", ACCORDING TO THE PLAT THEREOF, AS RECORDED IN PLAT BOOK 161, PAGE 34, OF THE PUBLIC RECORDS OF MIAMI-DADE COUNTY, FLORIDA, MORE PARTICULARLY DESCRIBED AS FOLLOWS:

COMMENCING AT THE MOST SOUTHERLY SOUTHWEST CORNER OF SAID TRACT W; THENCE NORTH 87°43'44" EAST, ALONG THE SOUTH LINE OF SAID TRACT W, A DISTANCE OF 541.77 FEET, TO THE POINT OF BEGINNING; THENCE NORTH 02°15'20" WEST, A DISTANCE OF 13.38 FEET; THENCE NORTH 87°46'02" EAST, A DISTANCE OF 20.62 FEET; THENCE NORTH 02°15'20" WEST, A DISTANCE OF 132.32 FEET; THENCE SOUTH 87°44'40" WEST, A DISTANCE OF 30.23 FEET; THENCE NORTH 02°15'20" WEST, A DISTANCE OF 12.00 FEET; THENCE NORTH 87°44'40" EAST, A DISTANCE OF 18.23 FEET; THENCE NORTH 02°15'20" WEST, A DISTANCE OF 14.46 FEET; THENCE NORTH 87°44'40" EAST, A DISTANCE OF 12.00 FEET; THENCE NORTH 02°15'20" WEST, A DISTANCE OF 126.74 FEET; THENCE NORTH 47°15'20" WEST, A DISTANCE OF 51.99 FEET; THENCE NORTH 02°15'20" WEST, A DISTANCE OF 65.34 FEET; THENCE SOUTH 87°44'40" WEST, A DISTANCE OF 10.46 FEET; THENCE NORTH 02°15'20" WEST, A DISTANCE OF 25.03 FEET; THENCE NORTH 87°44'40" EAST, A DISTANCE OF 10.46 FEET; THENCE NORTH 02°15'20" WEST, A DISTANCE OF 12.21 FEET; THENCE SOUTH 87°44'40" WEST, A DISTANCE OF 42.30 FEET; THENCE NORTH 47°15'20" WEST, A DISTANCE OF 104.36 FEET; THENCE NORTH 02°01'47" WEST, A DISTANCE OF 87.08 FEET; THENCE SOUTH 67°52'10" WEST, A DISTANCE OF 45.91 FEET; THENCE SOUTH 62°18'38" WEST, A DISTANCE OF 6.10 FEET; THENCE SOUTH 25°08'44" EAST, A DISTANCE OF 17.91 FEET; THENCE SOUTH 64°51'16" WEST, A DISTANCE OF 12.00 FEET; THENCE NORTH 25°08'44" WEST, A DISTANCE OF 29.39 FEET; THENCE NORTH 62°18'38" EAST, A DISTANCE OF 18.16 FEET; THENCE NORTH 67°52'10" EAST, A DISTANCE OF 46.95 FEET; THENCE NORTH 24°31'47" WEST, A DISTANCE OF 9.96 FEET, TO A POINT ON THE NORTH LINE OF SAID TRACT W, ALSO BEING A POINT ON A CURVE AT WHICH A RADIAL LINE BEARS SOUTH 06°08'44" EAST; THENCE EASTERLY, ALONG SAID NORTH LINE OF TRACT W, BEING A CURVE TO THE RIGHT, HAVING A RADIUS OF 233.88 FEET AND A CENTRAL ANGLE OF 03°07'40", AN ARC DISTANCE OF 12.77 FEET; THENCE SOUTH 24°31'47" EAST, A DISTANCE OF 17.64 FEET; THENCE SOUTH 02°01'47" EAST, A DISTANCE OF 86.98 FEET; THENCE SOUTH 47°15'20" EAST, A DISTANCE OF 94.41 FEET; THENCE NORTH 87°44'40" EAST, A DISTANCE OF 22.25 FEET; THENCE NORTH 00°58'28" WEST, A DISTANCE OF 30.33 FEET; THENCE NORTH 89°01'32" EAST, A DISTANCE OF 12.00 FEET; THENCE SOUTH 00°58'28" EAST, A DISTANCE OF 30.06 FEET; THENCE NORTH 87°44'40" EAST, A DISTANCE OF 15.08 FEET; THENCE SOUTH 02°15'20" EAST, A DISTANCE OF 109.61 FEET; THENCE SOUTH 47°15'20" EAST, A DISTANCE OF 51.99 FEET; THENCE SOUTH 02°15'20" EAST, A DISTANCE OF 303.85 FEET, TO A POINT ON THE SOUTH LINE OF SAID TRACT W; THENCE SOUTH 87°43'44" WEST, ALONG SAID SOUTH LINE OF TRACT W, A DISTANCE OF 32.62 FEET, TO THE POINT OF BEGINNING.

ALL OF SAID LANDS SITUATE, LYING AND BEING IN THE CITY OF MIAMI, MIAMI-DADE COUNTY, FLORIDA CONTAINING 10,980 SQUARE FEET MORE OR LESS.

SURVEYOR'S CERTIFICATE:

I HEREBY CERTIFY THAT THIS SKETCH OF SURVEY OF THE PROPERTY DESCRIBED HEREON IS TRUE AND CORRECT TO THE BEST OF MY KNOWLEDGE AND BELIEF AS RECENTLY SURVEYED AND DRAWN UNDER MY SUPERVISION. THIS SURVEY COMPLIES WITH THE MINIMUM TECHNICAL STANDARDS SET FORTH BY THE FLORIDA STATE BOARD OF PROFESSIONAL SURVEYORS AND MAPPERS IN CHAPTER 61G17-6, FLORIDA ADMINISTRATIVE CODE, PURSUANT TO SECTION 472-027, FLORIDA STATUTES.


 DAVID G. KRAUSE
 PROFESSIONAL SURVEYOR & MAPPER
 FLORIDA REGISTRATION NO. 4066

FOR THE FIRM:

LEGEND:

- POC = POINT OF COMMENCEMENT
- POB = POINT OF BEGINNING
- SITE ADDRESS: 15005 SW 24th STREET, MIAMI, FLORIDA

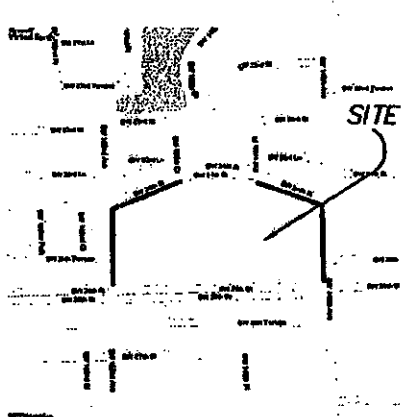
SURVEY NOTES:

- 1) LANDS SHOWN HEREON HAVE NOT BEEN ABSTRACTED FOR EASEMENTS OR RIGHTS OF WAY OF RECORD BY THE SURVEYOR.
- 2) BEARINGS SHOWN HEREON ARE BASED ON THE PLAT "GRAND LAKES PHASE III" (PB 161, PG 34, MDCR) THE SOUTH LINE OF TRACT W BEARS N87°43'44"E

REVISIONS	BNB SERVICES, INC. LAND SURVEYING 11550 N.W. 21st Street Plantation, Florida (954) 472-1031	SCALE 1" = 40' DATE 2-11-08 BY LD CK'D. cr SHEET: 1 OF 3 JOB NO. 06048

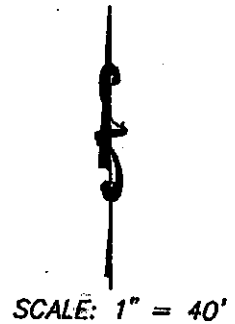
SKETCH OF SURVEY

STATE SCHOOL UUI 12' WIDE WATERLINE EASEMENT



SITE

MATCH
LINE

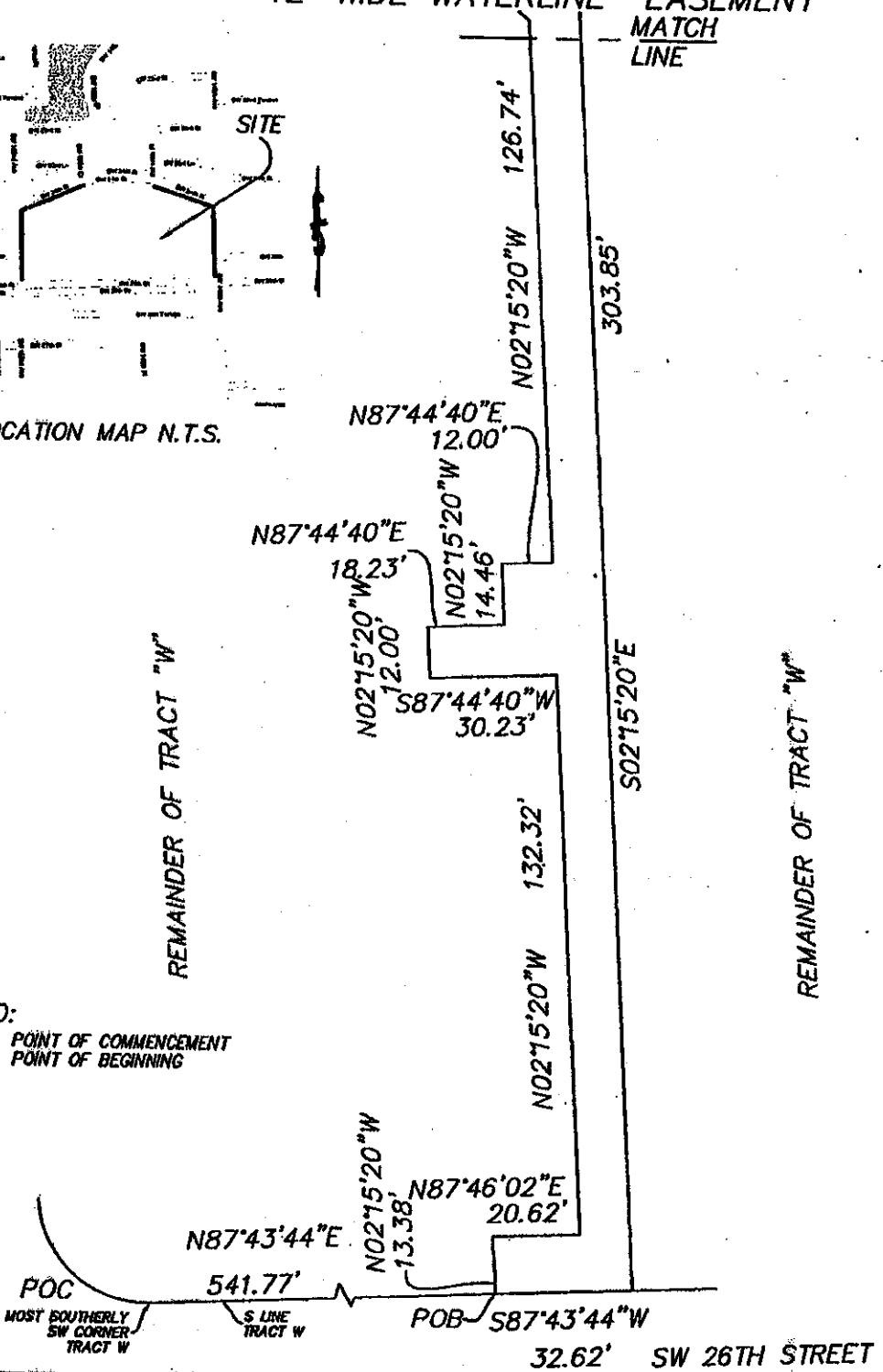


REMAINDER OF TRACT "W"

REMAINDER OF TRACT "W"

LEGEND:

- POC = POINT OF COMMENCEMENT
- POB = POINT OF BEGINNING



REVISIONS

BNB SERVICES, INC.
LAND SURVEYING
 11550 N.W. 21st Street
 Plantation, Florida
 (954) 472-1031

SCALE	1" = 40'
DATE	2-11-08
BY	LD
CK'D.	cr
SHEET:	2 OF 3
JOB NO.	06048

SKETCH OF SURVEY

STATE SCHOOL UU1

12' WIDE WATERLINE EASEMENT

