

Office of Superintendent of Schools
Board Meeting of January 14, 2015

January 8, 2015

Office of School Facilities
Jaime G. Torrens, Chief Facilities Officer

SUBJECT: AUTHORIZATION TO DEDICATE LAND TO THE CITY OF MIAMI FOR RIGHT-OF-WAY PURPOSES, ADJACENT TO KENSINGTON PARK ELEMENTARY SCHOOL, LOCATED AT 711 NW 30 AVENUE, MIAMI, FLORIDA 33125

COMMITTEE: FACILITIES AND CONSTRUCTION } REVISED

LINK TO STRATEGIC FRAMEWORK: FINANCIAL EFFICIENCY/STABILITY

Miami-Dade County ("County"), in collaboration with the City of Miami ("City"), is proposing intersection improvements at NW 30 Avenue and NW 11 Street, adjacent to Kensington Park Elementary School ("School"). Work will include drainage upgrades, improved school bus roadway access and signal modifications. In order to facilitate the project, the County has requested that the District dedicate a portion of the Board-owned site to the City for use as public right-of-way. In addition to the above work, the proposed roadway project includes various safety enhancements designed under the Safe Routes to School Program.

The area to be dedicated totals approximately 133 square feet, or .00030 acres, more or less, and is more fully described in Exhibit "A", attached hereto.

The right-of-way document will be reviewed by the School Board Attorney's Office and the Office of Risk and Benefits Management prior to execution. The School Principal, Region Superintendent, Central Region Office, and the Office of School Facilities all recommend the proposed right-of-way dedication.

RECOMMENDED: That The School Board of Miami-Dade County, Florida, authorize the Chair and Secretary to execute the necessary documents to dedicate land to the City of Miami for right-of-way purposes adjacent to Kensington Park Elementary School, located at 711 NW 30 Avenue, Miami, Florida.

REVISED

F-1

1. The first part of the document is a letter from the author to the editor of the journal. The letter discusses the author's interest in the topic and the reasons for writing the paper.

2. The second part of the document is the main body of the paper. It begins with an introduction that outlines the research question and the objectives of the study. The introduction also provides a brief overview of the literature on the topic.

3. The third part of the document is the methodology section. It describes the research design, the data sources, and the statistical methods used in the analysis.

4. The fourth part of the document is the results section. It presents the findings of the study, including the main results and any secondary findings. The results are discussed in the context of the research question and the literature.

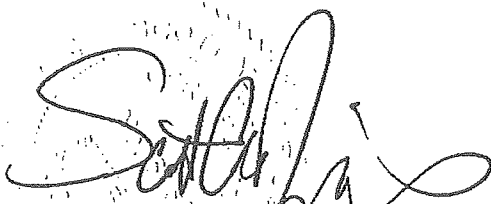
5. The fifth part of the document is the conclusion. It summarizes the main findings of the study and discusses the implications of the results. The conclusion also includes some suggestions for future research.

EXHIBIT "A"

LEGAL DESCRIPTION

A parcel of land lying and Being in "Kensington Park Seventh Street Addition"; according to the Plat thereof as recorded in Plat Book 30, at Page 32 of the Miami-Dade County, Florida, being more particularly described as follows:

Commence at the Northwest corner of said "Kensington Park Seventh Street Addition", and also being the Point of Beginning of a Parcel hereinafter described; thence S 2°01'27" E along the East Right of Way line of Northwest 30 Avenue for a distance of 24.89 feet, to the point of curvature of a circular curve concave to the Southeast, a radial line from said point bears S 87°58'33" W to its center; thence run Northeasterly along the arc of said circular curve having a Radius of 25.00 feet, through a central angle of 89°44'25" for a arc distance of 39.16 feet; thence S 87°42'58" W along the South Right of Way line of Northwest 11 Street for a distance of 24.89 feet to the Point of Beginning. Lying and Being in Miami-Dade County, Florida and containing 133 square feet or 0.0030 acres, more or less.



SCOTT A. RIGGS, PSM
 Florida License # 6180
 111 NW First Street, Suite # 1610
 Miami, Florida 33128 (305) 375-2657
 Date: 09-17-2014



THIS IS NOT A SURVEY

SKETCH TO ACCOMPANY LEGAL DESCRIPTION
 MIAMI-DADE COUNTY PUBLIC WORKS
 AND WASTE MANAGEMENT DEPT.
 LAND DEVELOPMENT/RIGHT-OF-WAY DIVISION
 ENGINEERING SECTION

N.W. 11 STREET AND
 N.W. 30 AVENUE

SOUTHEAST PARCEL

SCALE: 1" = 30' DATE: 09-16-14

CHECKED BY: S. Riggs

DRAWN BY: JMM

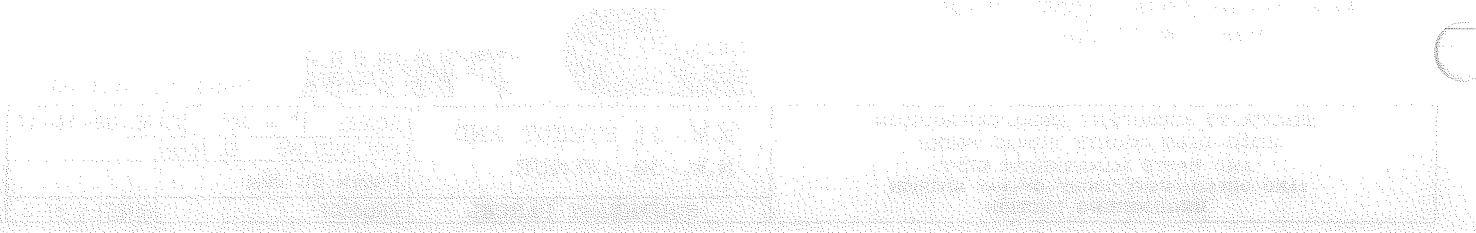
PROJECT:

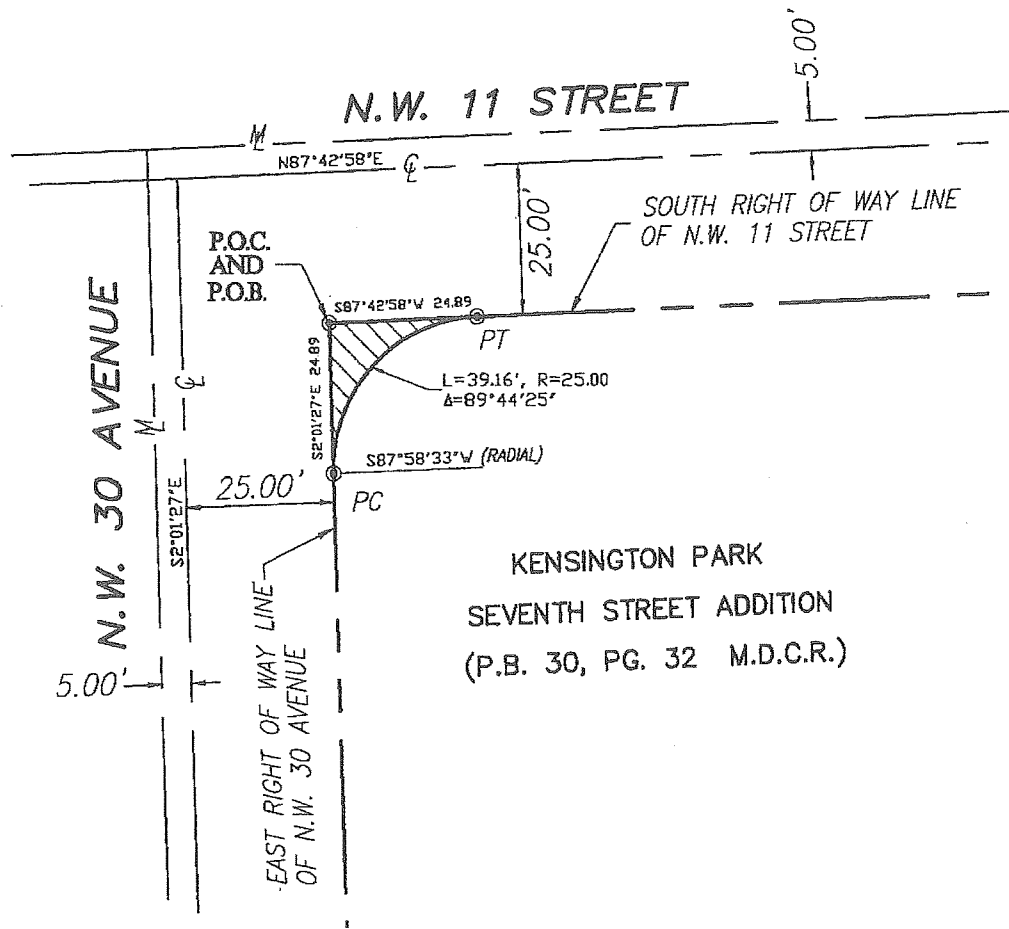
SHEET: 1 of 2

...the ... of ...

...the ... of ...

[Handwritten Signature]
...
...





- LEGEND**
- (PT) POINT OF TANGENCY
 - (PC) POINT OF CURVATURE
 - (PVI) POINT OF VERTICAL INTERSECTION
 - (R/W) RIGHT OF WAY
 - (TOWNSHIP) TOWNSHIP
 - (RANGE) RANGE
 - (SEC) SECTION
 - (P.O.B) POINT OF BEGINNING
 - (P.O.C) POINT OF COMMENCEMENT
 - (M) MONUMENT LINE
 - (C) CENTER LINE
 - (P.B.) PLAT BOOK
 - (P.G.) PAGE
 - AREA TO BE DEDICATED
 - BOUNDARY LINE
 - PROPERTY LINE
 - RIGHT-OF-WAY LINE
 - CENTER LINE
 - MONUMENT LINE
 - LOT LINE
- (A) ARC LENGTH
 (Δ) DELTA
 (R) RADIUS
 (D) BY DEED
 (C) CALCULATED
 (M.D.C.R.) MIAMI-DADE COUNTY RECORDS

Certified to:
 The School Board of Miami-Dade County, Florida, its successors
 and/or assigns; and Walter J. Harvey, Esq., School Board Attorney
 and its successors in office.

THIS IS NOT A SURVEY

THIS SKETCH IS A GRAPHIC REPRESENTATION OF THE LEGAL
 DESCRIPTION TO WHICH IT IS ATTACHED AND WITHOUT WHICH
 THIS SKETCH IS TO BE CONSIDERED VOID AND INCOMPLETE.



Scott A. Riggs
 SCOTT A. RIGGS, PSM
 Florida License # 6150
 111 NW First Street, Suite # 1610
 Miami, Florida 33128 (305) 375-2657

SKETCH TO ACCOMPANY LEGAL DESCRIPTION
 MIAMI-DADE COUNTY PUBLIC WORKS
 AND WASTE MANAGEMENT DEPT.
 LAND DEVELOPMENT/RIGHT-OF-WAY DIVISION
 ENGINEERING SECTION

N.W. 11 STREET AND
 N.W. 30 AVENUE

SOUTHEAST PARCEL

| | |
|----------------------|----------------|
| SCALE: 1" = 30' | DATE: 09-16-14 |
| CHECKED BY: S. Riggs | |
| DRAWN BY: JMM | |
| PROJECT: | SHEET: 2 of 2 |

