

# 2022 State Assessment Results and School Performance Grades

## Academic Recovery Spotlight



All Mathematics (FSA and EOCs)  
 Percent Scoring Levels 3-5  
 M-DCPS, State, and Large Districts

|                     | 2021 | 2022 | Difference |
|---------------------|------|------|------------|
| <b>MIAMI-DADE</b>   | 48%  | 57%  | 9          |
| <b>BROWARD</b>      | 45%  | 54%  | 9          |
| <b>PALM BEACH</b>   | 49%  | 55%  | 6          |
| <b>ORANGE</b>       | 51%  | 56%  | 5          |
| <b>FLORIDA</b>      | 51%  | 55%  | 4          |
| <b>HILLSBOROUGH</b> | 49%  | 53%  | 4          |
| <b>DUVAL</b>        | 48%  | 50%  | 2          |

# FSA Mathematics

## Grade 3-8

### Percent Scoring Levels 3-5 - By Subgroup

| MATHEMATICS | State |      |            | M-DCPS |      |            |
|-------------|-------|------|------------|--------|------|------------|
| Subgroup    | 2021  | 2022 | Difference | 2021   | 2022 | Difference |
| Black       | 28    | 34   | 6          | 26     | 36   | 10         |
| Hispanic    | 43    | 49   | 6          | 48     | 56   | 8          |
| White       | 62    | 64   | 2          | 67     | 74   | 7          |

# Algebra 1 EOC Percent Scoring Levels 3-5

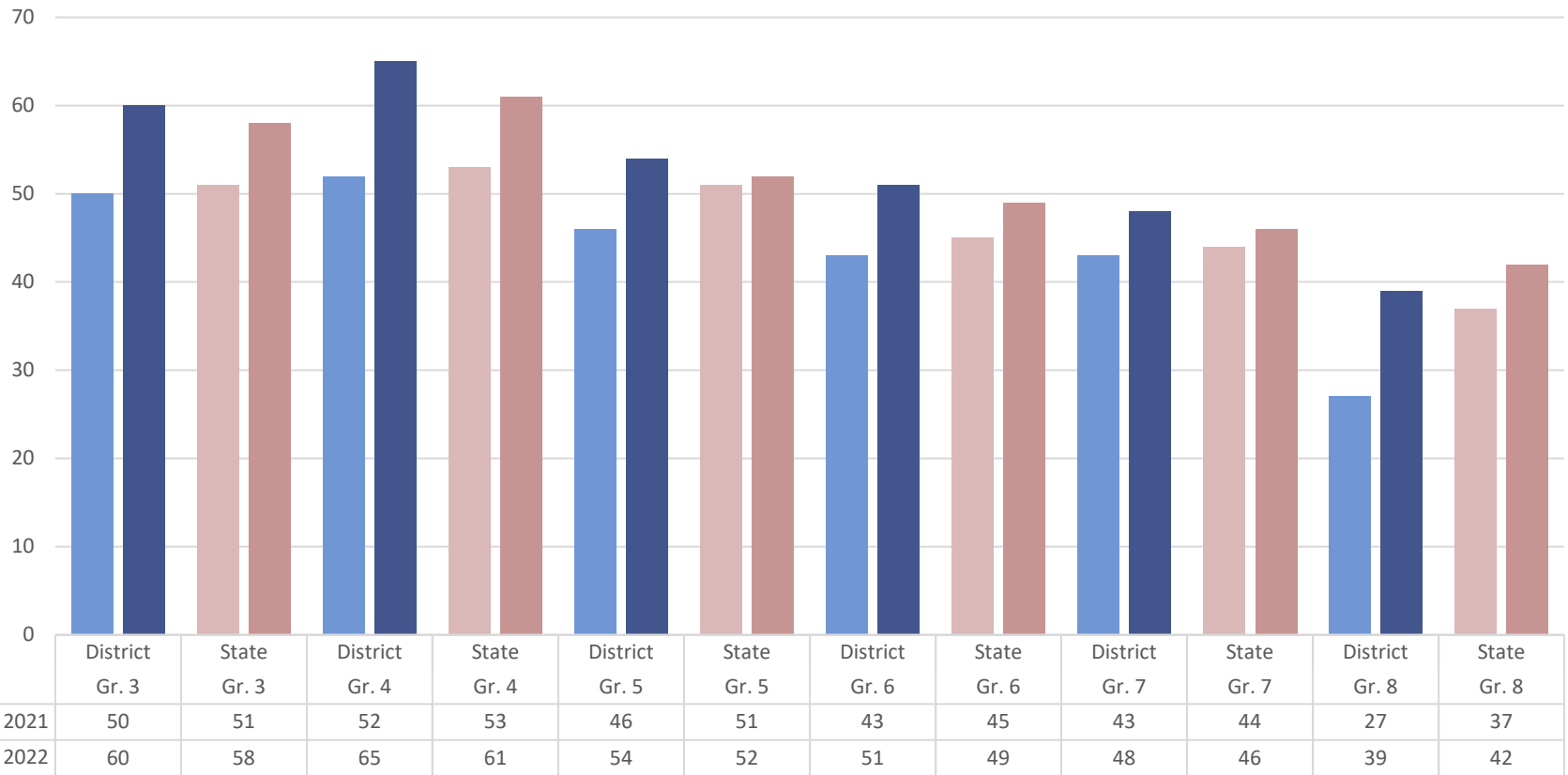
| Algebra 1 | 2021 | 2022 | Difference |
|-----------|------|------|------------|
| District  | 46   | 57   | 11         |
| State     | 49   | 54   | 5          |

# Geometry EOC Percent Scoring Levels 3-5

| Geometry | 2021 | 2022 | Difference |
|----------|------|------|------------|
| District | 41   | 49   | 8          |
| State    | 45   | 50   | 5          |

# 2021 and 2022 FSA Mathematics Miami-Dade and State Percent Scoring Levels 3-5

## Mathematics



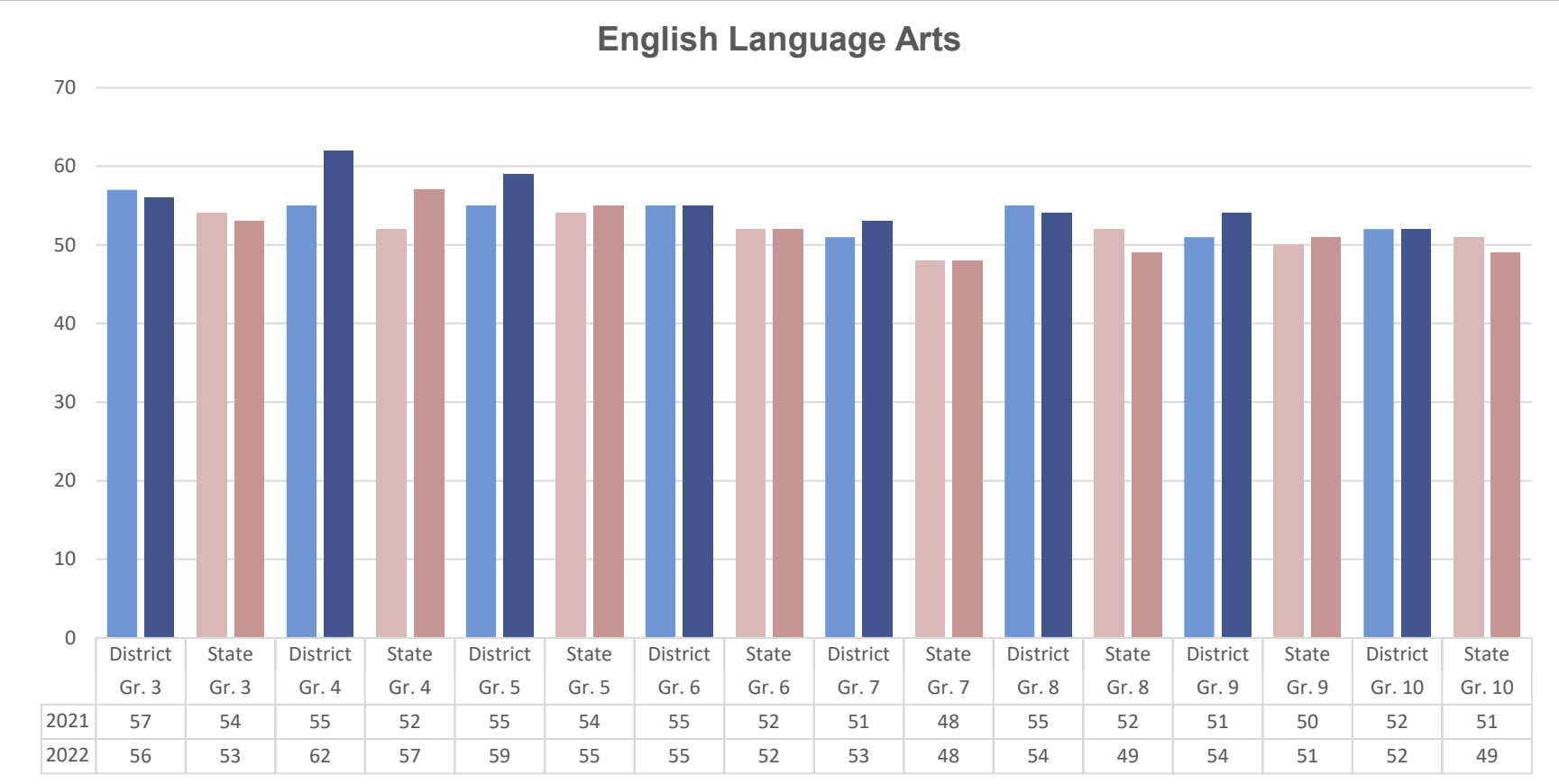
**FSA English Language Arts**  
**Grade 3-10**  
**Percent Scoring Levels 3-5**  
**M-DCPS, State, and Large Districts**

|                     | <b>2021</b> | <b>2022</b> | <b>Difference</b> |
|---------------------|-------------|-------------|-------------------|
| <b>MIAMI-DADE</b>   | 54%         | 55%         | 1                 |
| <b>PALM BEACH</b>   | 53%         | 54%         | 1                 |
| <b>BROWARD</b>      | 52%         | 53%         | 1                 |
| <b>FLORIDA</b>      | 52%         | 52%         | 0                 |
| <b>ORANGE</b>       | 51%         | 51%         | 0                 |
| <b>HILLSBOROUGH</b> | 50%         | 50%         | 0                 |
| <b>DUVAL</b>        | 45%         | 45%         | 0                 |

# FSA English Language Arts Grade 3-10 Percent Scoring Levels 3-5 - By Subgroup

| ELA      | State |      |            | District |      |            |
|----------|-------|------|------------|----------|------|------------|
| Subgroup | 2021  | 2022 | Difference | 2021     | 2022 | Difference |
| Black    | 34    | 35   | 1          | 34       | 38   | 4          |
| Hispanic | 48    | 49   | 1          | 56       | 58   | 2          |
| White    | 63    | 63   | 0          | 73       | 75   | 2          |

# 2021 and 2022 FSA English Language Arts Miami-Dade and State Percent Scoring Levels 3-5



# Civics and US History EOC Percent Scoring Levels 3-5

|          | Civics EOC |      |            | U.S. History EOC |      |            |
|----------|------------|------|------------|------------------|------|------------|
|          | 2021       | 2022 | Difference | 2021             | 2022 | Difference |
| District | 62         | 71   | 9          | 59               | 66   | 7          |
| State    | 64         | 69   | 5          | 63               | 65   | 2          |

# Science and Biology 1 Percent Scoring Levels 3-5

| Science        | 2021 | 2022 | Difference |
|----------------|------|------|------------|
| <b>Grade 5</b> |      |      |            |
| District       | 43   | 49   | 6          |
| State          | 47   | 48   | 1          |
| <b>Grade 8</b> |      |      |            |
| District       | 37   | 39   | 2          |
| State          | 45   | 45   | 0          |
| <b>Biology</b> |      |      |            |
| District       | 61   | 62   | 1          |
| State          | 61   | 61   | 0          |

# High School Graduation Tests Percent Passing

|                      | 2021 | 2022 | Difference |
|----------------------|------|------|------------|
| <b>Grade 10 ELA</b>  |      |      |            |
| <b>District</b>      | 52   | 52   | 0          |
| <b>State</b>         | 51   | 49   | -2         |
| <b>Algebra 1 EOC</b> |      |      |            |
| <b>District</b>      | 46   | 57   | 11         |
| <b>State</b>         | 49   | 54   | 5          |

# The Bottom Line

The Spring 2022 State Assessment results reflect that despite the many challenges brought on by the pandemic, M-DCPS students outscored their counterparts in the State in 18 of 21 assessed areas.

M-DCPS deployed a myriad of strategies to enhance and refine school support, creating a method which proved to be successful in aiding academic recovery following the COVID-19 pandemic.



# 2021-2022 Preliminary School Performance Grades

# 2018-2019 and 2021-2022

## Preliminary School Performance Grades\*

### Number of Schools Earning Each School Performance Grade\*\*

| School Level            |         | A     |       | B     |       | C     |       | D     |       | F     |       |
|-------------------------|---------|-------|-------|-------|-------|-------|-------|-------|-------|-------|-------|
|                         |         | 18-19 | 21-22 | 18-19 | 21-22 | 18-19 | 21-22 | 18-19 | 21-22 | 18-19 | 21-22 |
| <b>Elementary</b>       |         | 89    | 110   | 70    | 47    | 42    | 45    | 3     | 1     | 0     | 0     |
| <b>Middle</b>           |         | 30    | 27    | 17    | 20    | 26    | 25    | 2     | 0     | 0     | 0     |
| <b>Senior</b>           |         | 34    | 38    | 24    | 12    | 15    | 19    | 1     | 0     | 0     | 0     |
| <b>Combination</b>      |         | 51    | 61    | 20    | 20    | 17    | 15    | 1     | 0     | 0     | 1     |
| <b>All Levels</b>       | Total   | 204   | 236   | 131   | 99    | 100   | 104   | 7     | 1     | 0     | 1     |
|                         | M-DCPS  | 131   | 155   | 107   | 81    | 85    | 79    | 2     | 1     | 0     | 0     |
|                         | Charter | 73    | 81    | 24    | 18    | 15    | 25    | 5     | 0     | 0     | 1     |
| <b>Percent Total***</b> |         | 46%   | 54%   | 30%   | 22%   | 23%   | 24%   | 2%    | <1%   | 0%    | <1%   |

\*Updated July 18, 2022.

\*\*The 2018-2019 counts and percentages displayed above reflect minor differences from percentages previously published because of the inclusion of the school grades of schools that had been previously denoted as Incomplete.

\*\*\*17 Schools receiving an "Incomplete" in 2021-22 are not included.

# 2021-2022

## Preliminary School Performance Grades\* M-DCPS, Florida, and Selected Districts

|                     | <b>A</b>   | <b>AB</b>  | <b>ABC</b>   |
|---------------------|------------|------------|--------------|
| <b>Miami-Dade</b>   | <b>54%</b> | <b>76%</b> | <b>99.5%</b> |
| <b>Florida</b>      | 33%        | 58%        | 94%          |
| <b>Broward</b>      | 38%        | 63%        | 96%          |
| <b>Duval</b>        | 26%        | 46%        | 88%          |
| <b>Hillsborough</b> | 29%        | 53%        | 94%          |
| <b>Orange</b>       | 31%        | 60%        | 96%          |
| <b>Palm Beach</b>   | 38%        | 59%        | 95%          |

\* Updated July 18, 2022

# 2021-2022

## School Performance Grades Highlights

- The percentage of “A” schools in Miami-Dade County Public Schools increased by 8 percentage points from 46% in 2018-2019 to 54% in 2021-2022.
  - In 2021-2022, 99.5% of all M-DCPS schools earned “A”, “B” or “C” school grades.
  - In M-DCPS, 76% of all schools earned “A” or “B” school grades, as compared to 58% statewide.
- The percentage of M-DCPS schools earning an “A” outpaced other large districts, including Broward, Duval, Hillsborough, Orange, and Palm Beach.

# The Bottom Line

- For the third time, Miami-Dade County Public Schools has achieved a districtwide grade of “A”.
- Nearly 100 percent (99.5%) of the schools in Miami-Dade earned a school performance grade of “A,” “B” or “C”.
- For the fourth year in a row, there are no “F” rated traditional schools in Miami-Dade.



# Preliminary Advanced Placement (AP) Results

**Percentage of Students Earning a Passing Rate on the AP Exams**

| <b>2022</b> | <b>2021</b> | <b>2020*</b> | <b>2019</b> | <b>2018</b> |
|-------------|-------------|--------------|-------------|-------------|
| 58.4%       | 51.0%       | 64.7%        | 56.7%       | 55.3%       |

\* Alternate Test Modality



# Academic Recovery Spotlight



# Strategies Implemented to Accelerate Learning



Refined and enhanced school support (tiered and targeted support to schools)

Provided ongoing PD to teachers on strategies to address unfinished learning as well as best practices for content delivery

Invested in, trained, and allocated additional reading and math coaches to schools based on deep analysis of performance and learning gains trends

Provided schools with funds to hire interventionists and tutors

Provided extended learning opportunities for students, such as before- and after-school tutoring, Saturday School, Winter Break Academy, and Spring Break Academy

Reimagined summer school programming to address the whole child and accelerate learning

