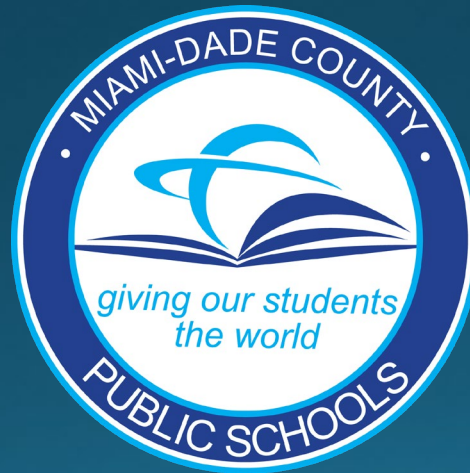


SCHOOL BOARD CONFERENCE SESSION

ATTENDANCE ZONE RECOMMENDATIONS 2025-2026



WEDNESDAY, APRIL 16, 2025



**MIAMI-DADE COUNTY PUBLIC SCHOOLS
ATTENDANCE BOUNDARY COMMITTEE (ABC) 2024-2025**

ABC APPOINTEE	APPOINTED BY	ABC ALTERNATE
The School Board of Miami-Dade County, Florida		
Mr. Eddy Barea	Ms. Mari Tere Rojas, Chair, (District 6)	Ms. Cynthia Gracia
Ms. Silvia Coronado	Ms. Monica Colucci, Vice Chair, (District 8)	TBA
Mr. Larry T. Williams	Dr. Steve Gallon III, Member, (District 1)	Mr. Michael Horne
Ms. Regina Davis	Dr. Dorothy Bendross-Mindingall, Member, (District 2)	Ms. Beverly Nixon
Ms. Jelena Demetriades	Mr. Joseph S. Geller, Member, (District 3)	TBA
Ms. Marilyn Ruano	Mr. Roberto J. Alonso, Member, (District 4)	Ms. Daissys Estrada
TBA	Mr. Danny Espino, Member, (District 5)	TBA
Ms. Lourdes Mestre	Ms. Mary Blanco, Member, (District 7)	TBA
Ms. Tamia Spells	Ms. Luisa Santos, Member, (District 9)	Ms. Mina Hosseini
Mr. Alfred Billings	Dr. Jose L. Dotres Superintendent of Schools	Ms. Mirca Aboud
Mr. Jeffrey Codallo		Ms. Christa Dotson-Dean
Mr. Jorge L. Garcia		Ms. Nancy Negron
Mr. Don Kearns		Mr. Thomas Spaulding
Ms. Meriel Seymore		Ms. Vivian Swift
Dr. Marta Hernandez		Diversity, Equity and Excellence Advisory Committee (DEEAC)
Ms. Sharon Watson	Parent Teacher Association (PTA) Parent Teacher Student Association (PTSA)	Ms. Carolyn Nelson-Goedert
Mr. Ernie Martinez	Educational Services and Exceptional Student Education	Ms. Beverly Heller

Revised 3/20/2025

**MIAMI-DADE COUNTY PUBLIC SCHOOLS
ATTENDANCE BOUNDARY COMMITTEE (ABC)
2024-2025 FINAL TARGETED AND FINAL ADVISED SCHOOLS**

NORTH REGION			
FINAL TARGETED SCHOOLS		FINAL ADVISED SCHOOLS	
0091	Bob Graham Education Center	2161	Golden Glades Elementary
2181	Joella C. Good Elementary	3581	Myrtle Grove Elementary
2191	Spanish Lake Elementary	3781	Barbara Hawkins Elementary
4281	Palm Springs North Elementary	3861	North Glade Elementary
5991	Charles D. Wyche Jr. Elementary	4341	Parkway Elementary
6161	Lawton Chiles Middle	4541	Rainbow Park Elementary
6611	Country Club Middle		

CENTRAL REGION			
FINAL TARGETED SCHOOLS		FINAL ADVISED SCHOOLS	
1401	Charles R. Drew K-8 Center	0961	Coral Gables Preparatory Academy
1681	Lillie C. Evans K-8 Center	1361	Frederick Douglass Elementary
2981	Liberty City Elementary	1441	Paul L. Dunbar K-8 Center
4501	Poinciana Park Elementary	3041	Lorah Park Elementary
		5041	Silver Bluff Elementary
		5931	Phillis Wheatley Elementary

SOUTH REGION			
FINAL TARGETED SCHOOLS		FINAL ADVISED SCHOOLS	
	N/A	3541	Robert Russo Moton Elementary
		4461	Pine Villa Elementary

Attendance Boundary Committee (ABC) Timeline at a Glance

Thursday, October 24, 2024	Orientation meeting for ABC members
Thursday, November 14, 2024	Presentation of initially targeted/advised school recommendations to ABC
Friday, November 15, 2024	Principals of initially targeted/advised schools were notified, and communications were sent to parents
Thursday, December 5, 2024	ABC identified final targeted/advised schools
Friday, December 6, 2024	Principals of final targeted/advised schools were notified
Wednesday, December 11, 2024	Regions submit community meeting dates
January 6, 2025 – January 24, 2025	Community Meetings were conducted for Targeted and Advised schools.
Friday, February 7, 2025	ABC reviewed recommendations submitted by community/Region Offices and approved the final targeted and advised schools
Thursday, March 13, 2025	ABC boundary recommendations were presented at the Diversity, Equity, and Excellence Advisory Committee (DEEAC) meeting
Tuesday, April 1, 2025	Region Superintendents present recommendations approved by the ABC to Superintendent of Schools, School Board Attorney and appropriate staff.
Wednesday, April 16, 2025	School Board Conference Session and Initial Reading for Attendance Zones 2025-2026
Wednesday, June 18, 2025	School Board Meeting - Final Reading Attendance Zones for 2025-2026

Attendance Boundary Committee (ABC) Factors Considered

1. Declining enrollment and ability to conduct a viable educational program
2. Compliance with Class Size Reduction Mandate
3. Impact on Exceptional Student Education programs
4. Use of available student stations within contiguous areas
5. Degree and extent of transportation
6. Programmatic impact due to lack of student housing
7. Reduction of the number of schools students must attend
8. Integrity of feeder systems
9. Assignment of students from new residential developments to specific schools prior to completion of developments
10. Construction of new schools
11. Promotion and maintenance of diverse school enrollments
12. Reduction or elimination of racial isolation to the extent practical

Student Demographics Factors

- **White**
- **Black**
- **Hispanic**
- **Asian/Pacific Islander**
- **Multiracial**
- **Exceptional Student Education Programs**
- **Free/Reduced Price Lunch**
- **English Language Learners**
- **Male**
- **Female**

South Region Office Advised Status Only

- Robert Russo Moton Elementary School
- Pine Villa Elementary School



Questions/ Comments

Proposed ABC Recommendations



Poinciana Park Elementary
Lillie C. Evans K-8 Center

Charles Drew K-8 Center
Liberty City Elementary

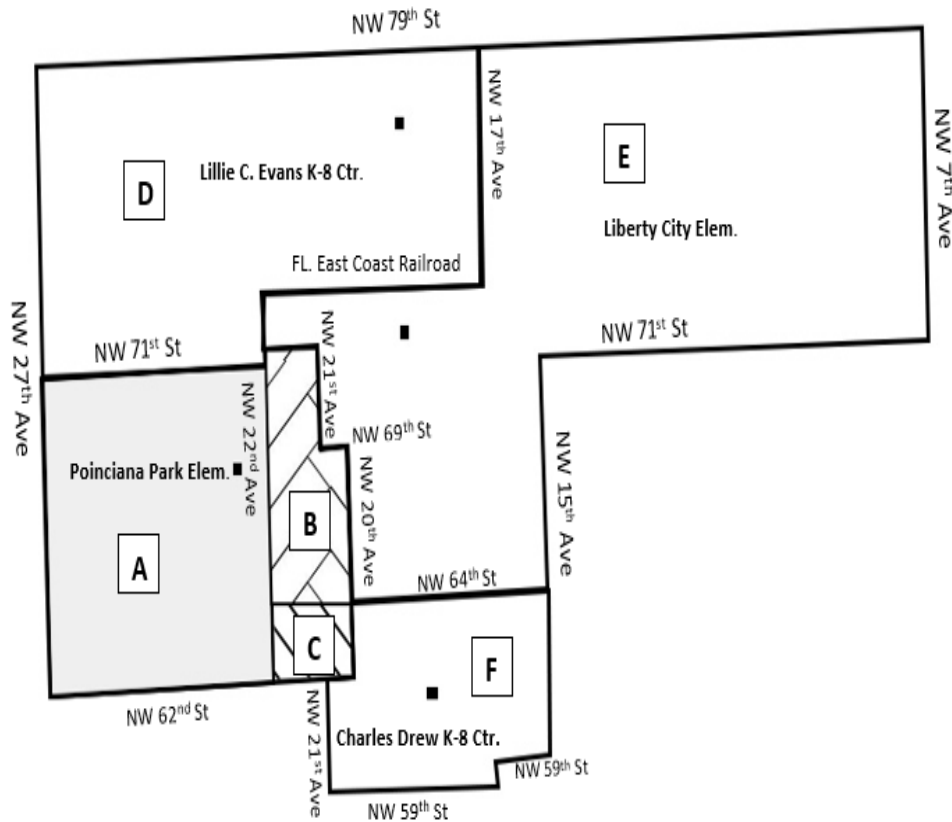
Brenda Swain
Region Superintendent

Manuel Garcia
ABC Region Director

Recommendations

- Proposed recommendations for Poinciana Park Elementary School, Charles Drew K-8 Center, Liberty City Elementary School, and Lillie C. Evans K-8 Center.
- Consider a plan to repurpose Poinciana Park Elementary
- Combine a portion of the current boundary of Poinciana Park Elementary School (Area A) to be combined with the current boundary of Lillie C. Evans K-8 Center.
- Combine a portion of the current boundary of Poinciana Park Elementary School (Area B) to be combined with the current boundary of Liberty City Elementary School.
- Combine a portion of the current boundary of Poinciana Park Elementary School (Area C) to be combined with the current boundary of Charles Drew K-8 Center.
- Brownsville will remain as the traditional Middle School.

Recommendations



<p>A B C</p>	<p>Areas A, B, and C represent the current boundary assigned to Poinciana Elementary School.</p>
<p>A D</p>	<p>Proposed new boundary for Lillie C. Evans K-8 Center, currently assigned to Poinciana Park Elementary with Brownsville Middle School remaining as the traditional Middle School.</p>
<p>B E</p>	<p>Proposed new boundary for Liberty City Elementary School, currently assigned to Poinciana Park Elementary with Brownsville Middle School remaining as the traditional Middle School.</p>
<p>C F</p>	<p>Proposed new boundary for Charles Drew K-8 Center, currently assigned to Poinciana Park Elementary with Brownsville Middle School remaining as the traditional Middle School.</p>

Current boundary for Poinciana Park Elementary

- Begin at NW 27th Avenue and NW 71st Street

East to NW 21st Avenue

South to NW 69th Street

East to NW 20th Avenue

South to NW 62nd Street

West to NW 27th Avenue

North to NW 71st Street

point of beginning.

Current boundary for Charles R. Drew K-8 Center

- **Begin at NW 20th Avenue and NW 64th Street**
 - East on NW 64th Street to NW 15th Avenue**
 - South to NW 59th Street**
 - East on NW 59th Street to NW 21st Avenue**
 - North to NW 62nd Street**
 - East to NW 20th Avenue**
 - North to NW 64th Street**
- point of Beginning**

Current boundary for Liberty City Elementary

- **Begin at NW 17th Avenue and NW 79th Street**
 - East on NW 79th Street**
 - South on NW 7th Avenue**
 - West on NW 71st Street**
 - South on NW 15th Avenue**
 - West on NW 64th Street**
 - North on NW 21st Avenue**
 - West on NW 69th Street**
 - North on NW 21st Ave to Florida East Coast Railroad**
(between NW 72nd Street and NW 73rd Street)
 - East on Florida East Coast Railroad (between NW 72nd Street**
and NW 73rd Street) to NW 17th Avenue
 - North on NW 17th Avenue to NW 79th Street,**
point of beginning.

Current boundary for Lillie C. Evans K- 8 Center

- **Begin at NW 79th Street and NW 27th Avenue**
 - East to NW 17th Avenue**
 - South to Florida East Coast Railroad (between NW 72nd Street and NW 73rd Street)**
 - West to NW 22nd Avenue**
 - South to NW 71st Street**
 - West to NW 27th Avenue**
 - North to NW 79th Street,**
Point of beginning.

Proposed boundary for Charles Drew K-8 Center

- **Begin at NW 22nd Avenue and NW 64th Street**

East to NW 15th Avenue

South to NW 59th Street

West to NW 21st Avenue

North to NW 62nd Street

West to NW 22nd Avenue

North to NW 64th Street

Point of beginning.

Proposed boundary for Liberty City Elementary

- **Begin at NW 17th Avenue and NW 79th Street**

East on 79th Street

South on NW 7th Avenue

West on NW 71st Street

South on NW 15th Avenue

West to NW 64th Street

North on 22nd Avenue to FL. East Coast Railroad

East on FL. East Coast Railroad

North on NW 17th Avenue to 79th Street

Point of beginning.

Proposed boundary for Lillie C. Evans K-8 Center

- **Begin at NW 79th Street and NW 27th Avenue**
 - East to NW 17th Avenue**
 - South to Florida East Coast Railroad (between NW 72nd Street and NW 73rd Street)**
 - West to NW 22nd Avenue**
 - South to NW 62nd Street**
 - West to NW 27th Avenue**
 - North to NW 79th Street**
- **Point of beginning.**

Effects

Beginning with the 2025-2026 School Year:

- New boundaries will be established for Charles Drew K-8 Center, Liberty City Elementary School, and Lillie C. Evans K-8 Center.
- In Area (A), forty-four (44) kindergarten through fourth grade students residing in the boundary of Poinciana Park Elementary will be assigned to Lillie C. Evans K-8 Center.
- In Area (B), thirty-six (36) kindergarten through fourth grade students residing in the boundary of Poinciana Park Elementary will be assigned to Liberty City Elementary School.
- In Area (C), twenty-four (24) kindergarten through fourth grade students residing in the boundary of Poinciana Park Elementary will be assigned to Charles Drew K-8 Center.
- All kindergarten through fourth grade students residing in the combined boundaries of Poinciana Park Elementary, Charles Drew K-8 Center, Liberty City Elementary School, and Lillie C. Evans K-8 Center will attend Brownsville Middle School as their traditional Middle School.

**Miami-Dade County Public Schools
Attendance Boundary Committee (ABC)
Student Demographics Factors**

Poinciana Park Elementary

Student Demographics Factors	Current Percentage 2024-2025
White	1%
Hispanic	28%
Black (Non-Hispanic)	71%
Asian	0%
Indian	0%
Multi-racial	1%
FRL**	79%
ELL***	17%
ESE**** (Excluding Gifted)	37%
Male	47%
Female	53%
** FRL – Free/Reduced Lunch Status *** ELL – English Language Learners **** ESE – Exceptional Student Education	

**Miami-Dade County Public Schools
Attendance Boundary Committee (ABC)
Capacity Membership Data**

Poinciana Park Elementary

Capacity Membership	Current 2024-2025
Grade Configuration	K5
Student Enrollment	178
Perm FISH Cap	756
% Utilization Perm FISH Cap	24%
Perm & Temp FISH Cap	756
% Utilization Perm & Temp	24%

**Miami-Dade County Public Schools
Attendance Boundary Committee (ABC)
Student Demographics Factors**

Charles R. Drew K8

Student Demographics Factors	Current Percentage 2024-2025	Projected Percentage 2025-2026	Projected Percentage 2026-2027
White	1%	2%	2%
Hispanic	9%	10%	11%
Black (Non-Hispanic)	71%	88%	87%
Asian	2%	0%	0%
Indian	0%	0%	0%
Multi-racial	0%	0%	0%
FRL**	80%	83%	86%
ELL***	5%	5%	5%
ESE**** (Excluding Gifted)	21%	20%	19%
Male	50%	49%	46%
Female	50%	51%	54%
** FRL – Free/Reduced Lunch Status *** ELL – English Language Learners **** ESE – Exceptional Student Education			

**Miami-Dade County Public Schools
Attendance Boundary Committee (ABC)
Capacity Membership Data**

Charles R. Drew K8

Capacity Membership	Current 2024-2025	Projected 2025-2026	Projected 2026-2027
Grade Configuration	K8	K8	K8
Student Enrollment	420	394	291
Perm FISH Cap	662	662	662
% Utilization Perm FISH Cap	63%	60%	44%
Perm & Temp FISH Cap	662	662	662
% Utilization Perm & Temp	63%	60%	44%

**Miami-Dade County Public Schools
Attendance Boundary Committee (ABC)
Student Demographics Factors**

Liberty City Elementary

Student Demographics Factors	Current Percentage 2024-2025	Projected Percentage 2025-2026	Projected Percentage 2026-2027
White	0%	0%	0%
Hispanic	40%	35%	37%
Black (Non-Hispanic)	60%	65%	63%
Asian	1%	0%	0%
Indian	0%	0%	0%
Multi-racial	0%	0%	0%
FRL**	70%	74%	74%
ELL***	28%	25%	28%
ESE**** (Excluding Gifted)	16%	14%	12%
Male	51%	51%	53%
Female	49%	49%	47%

** FRL – Free/Reduced Lunch Status
 *** ELL – English Language Learners
 **** ESE – Exceptional Student Education

**Miami-Dade County Public Schools
Attendance Boundary Committee (ABC)
Capacity Membership Data**

Liberty City Elementary

Capacity Membership	Current 2024-2025	Projected 2025-2026	Projected 2026-2027
Grade Configuration	K5	K5	K5
Student Enrollment	245	277	286
Perm FISH Cap	830	830	830
% Utilization Perm FISH Cap	30%	33%	34%
Perm & Temp FISH Cap	830	830	830
% Utilization Perm & Temp	30%	33%	34%

**Miami-Dade County Public Schools
Attendance Boundary Committee (ABC)
Student Demographics Factors**

Lillie C. Evans K8

Student Demographics Factors	Current Percentage 2024-2025	Projected Percentage 2025-2026	Projected Percentage 2026-2027
White	1%	0%	0%
Hispanic	11%	32%	33%
Black (Non-Hispanic)	86%	67%	66%
Asian	2%	1%	0%
Indian	0%	0%	0%
Multi-racial	0%	1%	0%
FRL**	96%	76%	76%
ELL***	5%	20%	22%
ESE**** (Excluding Gifted)	25%	16%	14%
Male	54%	52%	51%
Female	46%	48%	49%

** FRL – Free/Reduced Lunch Status
 *** ELL – English Language Learners
 **** ESE – Exceptional Student Education

**Miami-Dade County Public Schools
Attendance Boundary Committee (ABC)
Capacity Membership Data**

Lillie C. Evans K8

Capacity Membership	Current 2024-2025	Projected 2025-2026	Projected 2026-2027
Grade Configuration	K8	K8	K8
Student Enrollment	236	287	259
Perm FISH Cap	600	600	600
% Utilization Perm FISH Cap	40%	48%	43%
Perm & Temp FISH Cap	600	600	600
% Utilization Perm & Temp	40%	48%	43%



Questions/ Comments

Proposed ABC Recommendations



Palm Springs North Elementary School

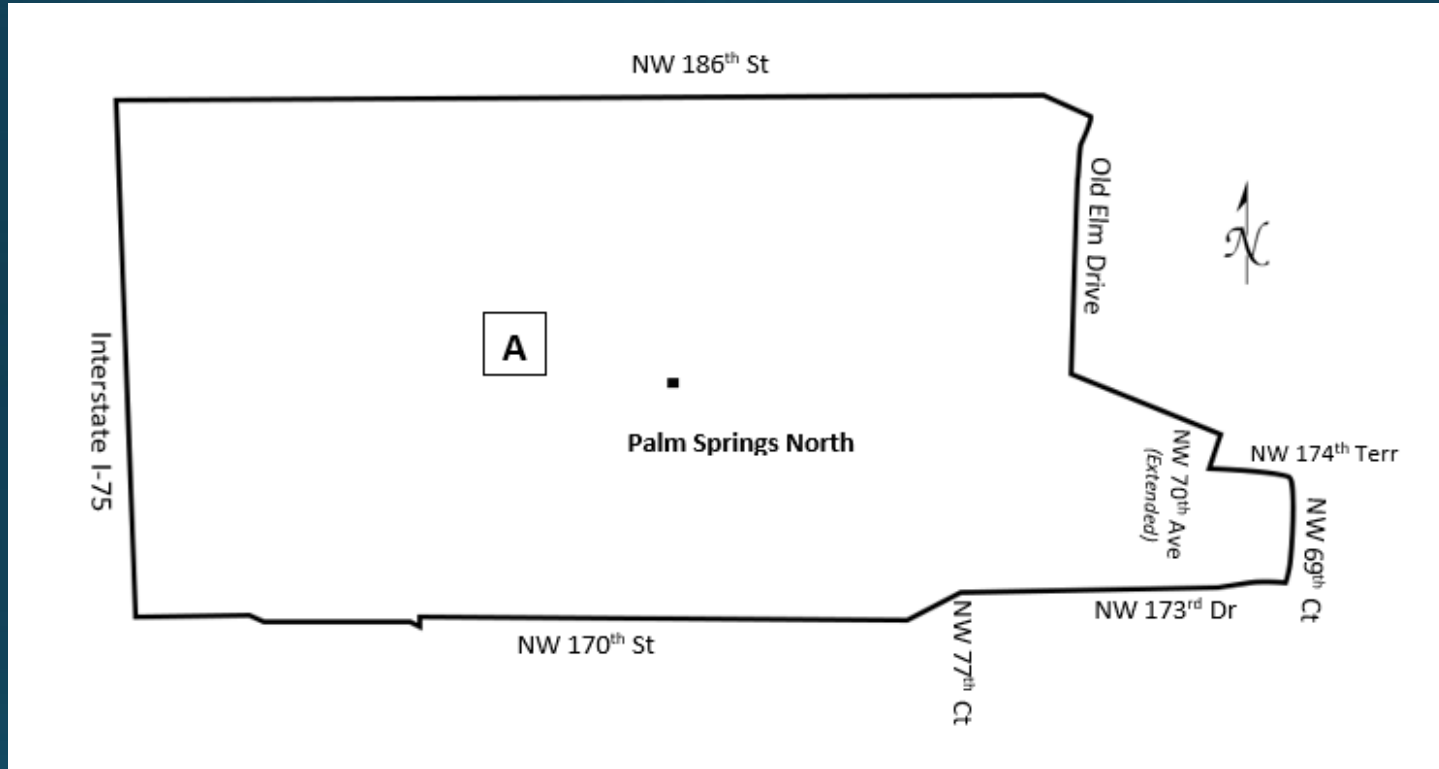
Dr. Yesenia M. Aponte
Region Superintendent

Mr. Leonard Torres
ABC Region Director

Recommendations

- Convert Palm Springs North Elementary to a full K-8 Center in response to parent interest and a community assessment.

Recommendations



A	The current boundary for Palm Springs North Elementary will remain the same.
----------	--

Current boundary for Palm Springs North Elementary

- Begin at NW 186 Street (Miami Gardens Drive) and Old Elm Drive
- Southeast through center of golf course (Former Country Club of Miami South Course) to intersection of NW 174 Terrace and NW 70 Avenue (extended)
- East on NW 174 Terrace to NW 69 Court
- South to NW 173 Drive
- West to NW 77 Court
- South to NW 170 Street
- West to Interstate 75 (approximately NW 92 Avenue)
- North to NW 186 Street (Miami Gardens Drive)
- East to Old Elm Drive
point of beginning.

Effects

Beginning with the 2025-2026 School Year

- Palm Springs North will gradually include a full complement of grades.

**Miami-Dade County Public Schools
Attendance Boundary Committee (ABC)
Student Demographics Factors**

Palm Springs North Elementary

Student Demographics Factors	Current Percentage 2024-2025	Projected Percentage 2025-2026	Projected Percentage 2026-2027
White	2%	2%	2%
Hispanic	95%	95%	95%
Black (Non-Hispanic)	2%	2%	2%
Asian	1%	1%	1%
Indian	0%	0%	0%
Multi-racial	0%	0%	0%
FRL**	58%	58%	58%
ELL***	31%	33%	34%
ESE**** (Excluding Gifted)	12%	9%	8%
Male	51%	51%	51%
Female	49%	49%	49%

** FRL – Free/Reduced Lunch Status
 *** ELL – English Language Learners
 **** ESE – Exceptional Student Education

**Miami-Dade County Public Schools
Attendance Boundary Committee (ABC)
Capacity Membership Data**

Palm Springs North Elementary

Capacity Membership	Current 2024-2025	Projected 2025-2026	Projected 2026-2027
Grade Configuration	PK – 6	PK – 7	PK – 8
Student Enrollment	1,422	1,492	1,589
Perm FISH Cap	1603	1603	1603
% Utilization Perm FISH Cap	89%	93%	99%
Perm & Temp FISH Cap	1603	1603	1603
% Utilization Perm & Temp	89%	93%	99%



Questions/ Comments

Proposed ABC Recommendations



Country Club Middle School Lawton Chiles Middle School

Dr. Yesenia M. Aponte
Region Superintendent

Mr. Leonard Torres
ABC Region Director

Enrollment

Country Club Middle School

Enrollment Trend Analysis

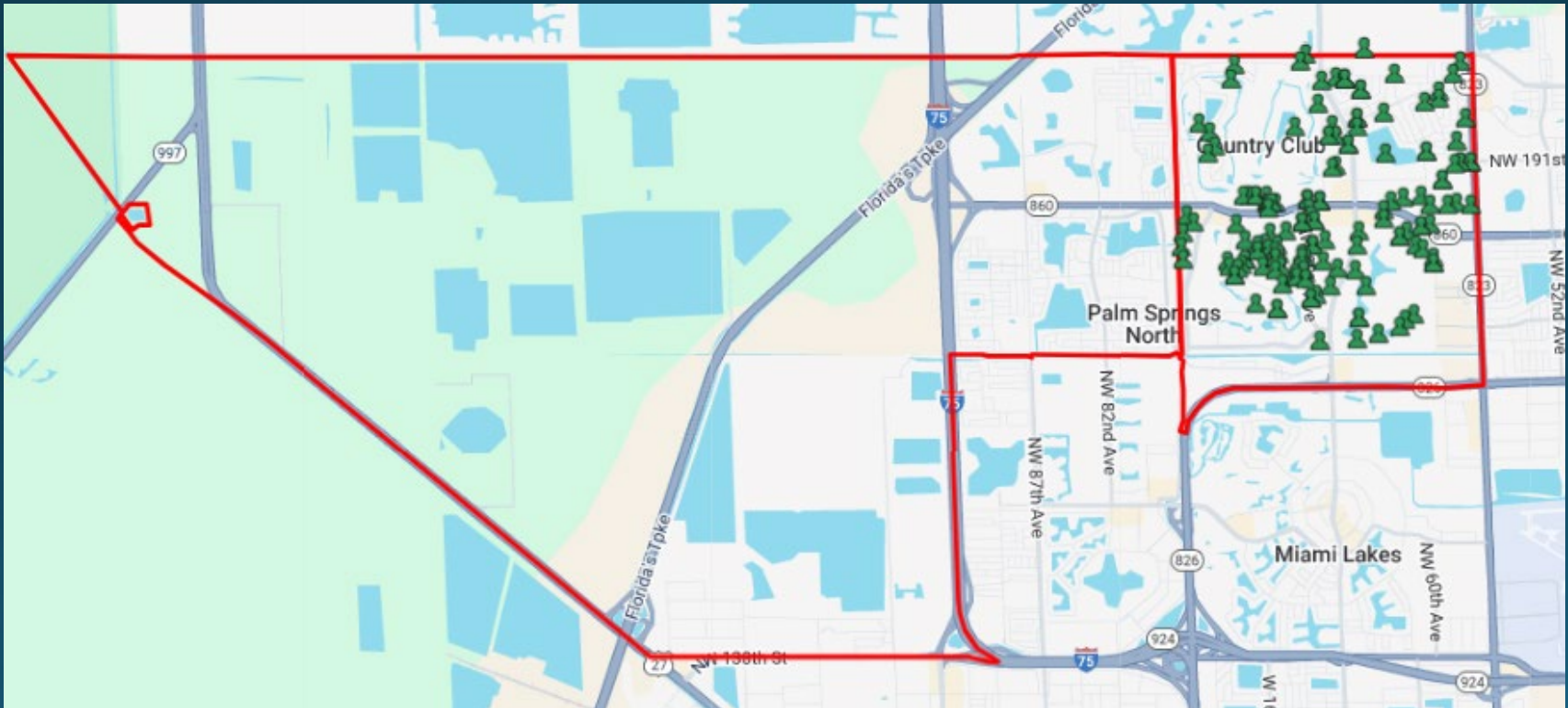
Grade Level	2023-2024 October Survey 2	2024-2025 (8/26/24)
8	236	205
7	178	155
6	163	128
TOTAL	577	488
Exiting Cohort	236	-108
Incoming Cohort	128	

UTILIZATION & CAPACITY	ENROLLMENT October Survey 2	Percent Utilization Capacity: 1295
19-20	724	55.9%
20-21	676	52.2%
21-22	625	48.3%
22-23	644	49.7%
23-24	577	44.6%

Enrollment data: Assessment, Research, and Data Analysis (ARDA)
 PK included if applicable. Capacity data: FISH reports

Rationale for Boundary Change

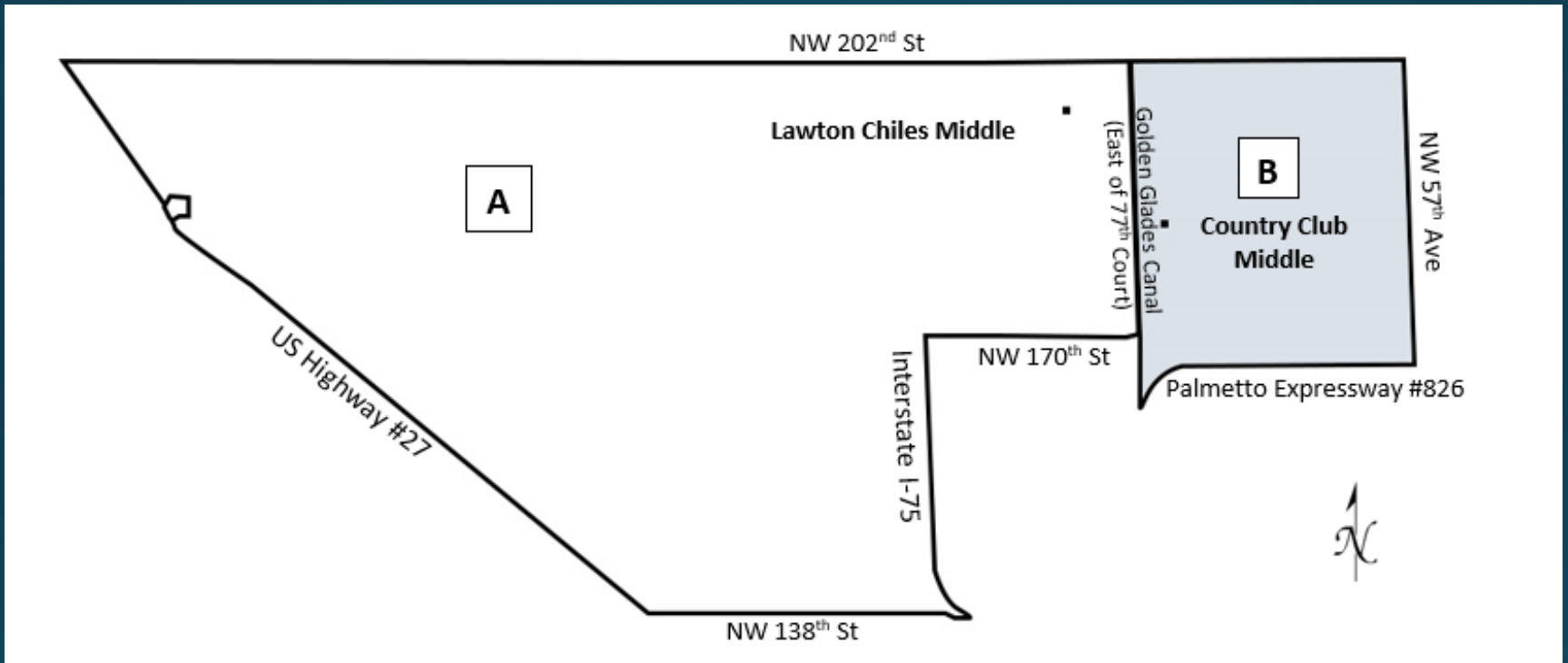
Country Club Middle School area students
currently attending
Lawton Chiles Middle School



Recommendations

- Dissolve the current boundary for Country Club Middle School
- Combine the boundaries of Lawton Chiles Middle School and Country Club Middle School
- Establish new boundaries for Lawton Chiles Middle School

Recommendations



A	Area A represents the current boundary for Lawton Chiles Middle.
B	Area B represents the current boundary for Country Club Middle.
A B	Areas A and B represent the proposed new boundary for Lawton Chiles Middle.

Current boundary for Lawton Chiles Middle School

- Begin at NW 202 Street (Miami Dade/Broward County Line) and US Highway 27 (Okeechobee Road)
- East on NW 202 Street (Miami Dade/Broward County Line) to Golden Glades Canal (East of NW 77 Court)
- South on Golden Glades Canal (East of NW 77 Court) to 170 Street
- West on NW 170 Street to Interstate 75 (I-75)
- South along Interstate 75 (I-75) to NW 138 Street
- West on NW 138 Street to US Highway 27 (Okeechobee Road)
- North on US 27 (Okeechobee Road) to NW 202 Street (Miami-Dade/Broward County Line)
point of beginning.

Current boundary for Country Club Middle School

- Begin at NW 202 Street (Miami-Dade/Broward County Line) and Golden Glades Canal (East of NW 77 Avenue)
- East to NW 57 Avenue
- South to Palmetto Expressway (#826)
- West to Golden Glades Canal (East of NW 77 Avenue)
- North to NW 202 Street (Miami-Dade/Broward County Line)
point of beginning.

Proposed boundary for Lawton Chiles Middle School

- Begin at NW 202 Street (Miami Dade/Broward County Line) and US Highway 27 (Okeechobee Road)
- East on NW 202 Street (Miami Dade/Broward County Line) to NW 57 Avenue
- South to Palmetto Expressway (#826)
- West to Golden Glades Canal (East of NW 77 Avenue)
- North to NW 170 Street
- West on NW 170 Street to Interstate 75 (I-75)
- South along Interstate 75 (I-75) to NW 138 Street
- West on NW 138 Street to US Highway 27 (Okeechobee Road)
- North on US 27 (Okeechobee Road) to NW 202 Street (Miami-Dade/Broward County Line)
point of beginning.

Proposed boundary for Lawton Chiles Middle School

- Begin at NW 202 Street (Miami Dade/Broward County Line) and US Highway 27 (Okeechobee Road)
- East on NW 202 Street (Miami Dade/Broward County Line) to NW 57 Avenue
- South to Palmetto Expressway (#826)
- West to Golden Glades Canal (East of NW 77 Avenue)
- North to NW 170 Street
- West on NW 170 Street to Interstate 75 (I-75)
- South along Interstate 75 (I-75) to NW 138 Street
- West on NW 138 Street to US Highway 27 (Okeechobee Road)
- North on US 27 (Okeechobee Road) to NW 202 Street (Miami-Dade/Broward County Line)
point of beginning.

Effects

Beginning with the 2025-2026 School Year

- New boundaries will be established for Lawton Chiles Middle School to include the Country Club Middle School boundary (Area B).
- All 6th – 8th grade students residing in Area B will be assigned to Lawton Chiles Middle School.

Effects

- Approximately 188 rising 7th and 8th grade students currently attending Country Club Middle School and residing in Area B will be assigned to Lawton Chiles Middle School.
- Approximately 251 rising 6th-grade students from elementary schools residing in Area B will be assigned to Lawton Chiles Middle School.
 - Data trends reflect that only 25% of rising 6th graders living within the boundary choose to attend Country Club Middle.

Effects

- Approximately 127 rising 6th grade students attending K-8 Centers, and residing in Area B, may remain at the K-8 Center or select Lawton Chiles Middle School as a traditional middle school option.
 - Bob Graham K-8 Center
 - Palm Springs North (Proposed K-8 Center)
- District enrollment trends have shown that students from a K-8 setting tend to remain at the K-8 location for middle grades. Therefore, the anticipated impact on these students is minimal.
- High School boundaries will remain the same.

**Miami-Dade County Public Schools
Attendance Boundary Committee (ABC)
Student Demographics Factors**

Lawton Chiles Middle School

Student Demographics Factors	Current Percentage 2024-2025	Projected Percentage 2025-2026	Projected Percentage 2026-2027
White	2%	2%	2%
Hispanic	82%	79%	80%
Black (Non-Hispanic)	15%	18%	17%
Asian	1%	1%	1%
Indian	0%	0%	0%
Multi-racial	0%	0%	0%
FRL**	56%	58%	56%
ELL***	20%	29%	31%
ESE**** (Excluding Gifted)	32%	27%	26%
Male	51%	51%	50%
Female	49%	49%	50%
** FRL – Free/Reduced Lunch Status *** ELL – English Language Learners **** ESE – Exceptional Student Education			

**Miami-Dade County Public Schools
Attendance Boundary Committee (ABC)
Capacity Membership Data**

Lawton Chiles Middle School

Capacity Membership	Current 2024-2025	Projected 2025-2026	Projected 2026-2027
Grade Configuration	6 – 8	6 – 8	6 – 8
Student Enrollment	514	866	810
Perm FISH Cap	937	937	937
% Utilization Perm FISH Cap	55%	92%	86%
Perm & Temp FISH Cap	937	937	937
% Utilization Perm & Temp	55%	92%	86%

**Miami-Dade County Public Schools
Attendance Boundary Committee (ABC)
Student Demographics Factors**

Country Club Middle School

Student Demographics Factors	Current Percentage 2024-2025
White	2%
Hispanic	76%
Black (Non-Hispanic)	21%
Asian	1%
Indian	0%
Multi-racial	0%
FRL**	61%
ELL***	35%
ESE**** (Excluding Gifted)	19%
Male	49%
Female	51%
** FRL – Free/Reduced Lunch Status *** ELL – English Language Learners **** ESE – Exceptional Student Education	

**Miami-Dade County Public Schools
Attendance Boundary Committee (ABC)
Capacity Membership Data**

Country Club Middle School

Capacity Membership	Current 2024-2025
Grade Configuration	6 – 8
Student Enrollment	496
Perm FISH Cap	1,295
% Utilization Perm FISH Cap	38%
Perm & Temp FISH Cap	1,295
% Utilization Perm & Temp	38%



Questions/ Comments

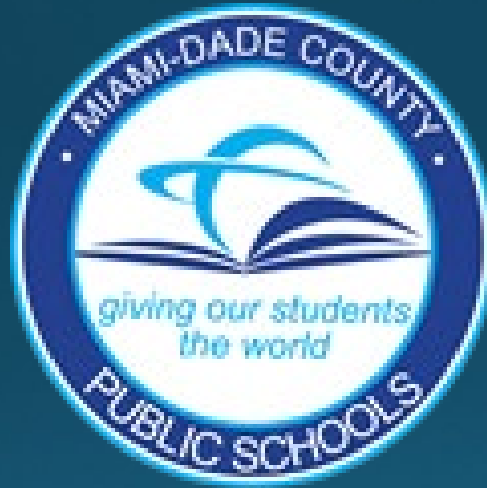
**MIAMI-DADE COUNTY PUBLIC SCHOOLS
ATTENDANCE BOUNDARY COMMITTEE (ABC)
2024-2025 FINAL TARGETED AND FINAL ADVISED SCHOOLS**

NORTH REGION			
FINAL TARGETED SCHOOLS		FINAL ADVISED SCHOOLS	
0091	Bob Graham Education Center	2161	Golden Glades Elementary
2181	Joella C. Good Elementary	3581	Myrtle Grove Elementary
2191	Spanish Lake Elementary	3781	Barbara Hawkins Elementary
4281	Palm Springs North Elementary	3861	North Glade Elementary
5991	Charles D. Wyche Jr. Elementary	4341	Parkway Elementary
6161	Lawton Chiles Middle	4541	Rainbow Park Elementary
6611	Country Club Middle		

CENTRAL REGION			
FINAL TARGETED SCHOOLS		FINAL ADVISED SCHOOLS	
1401	Charles R. Drew K-8 Center	0961	Coral Gables Preparatory Academy
1681	Lillie C. Evans K-8 Center	1361	Frederick Douglass Elementary
2981	Liberty City Elementary	1441	Paul L. Dunbar K-8 Center
4501	Poinciana Park Elementary	3041	Lorah Park Elementary
		5041	Silver Bluff Elementary
		5931	Phillis Wheatley Elementary

SOUTH REGION			
FINAL TARGETED SCHOOLS		FINAL ADVISED SCHOOLS	
	N/A	3541	Robert Russo Moton Elementary
		4461	Pine Villa Elementary

SCHOOL LEADERSHIP & PERFORMANCE



ATTENDANCE BOUNDARY COMMITTEE