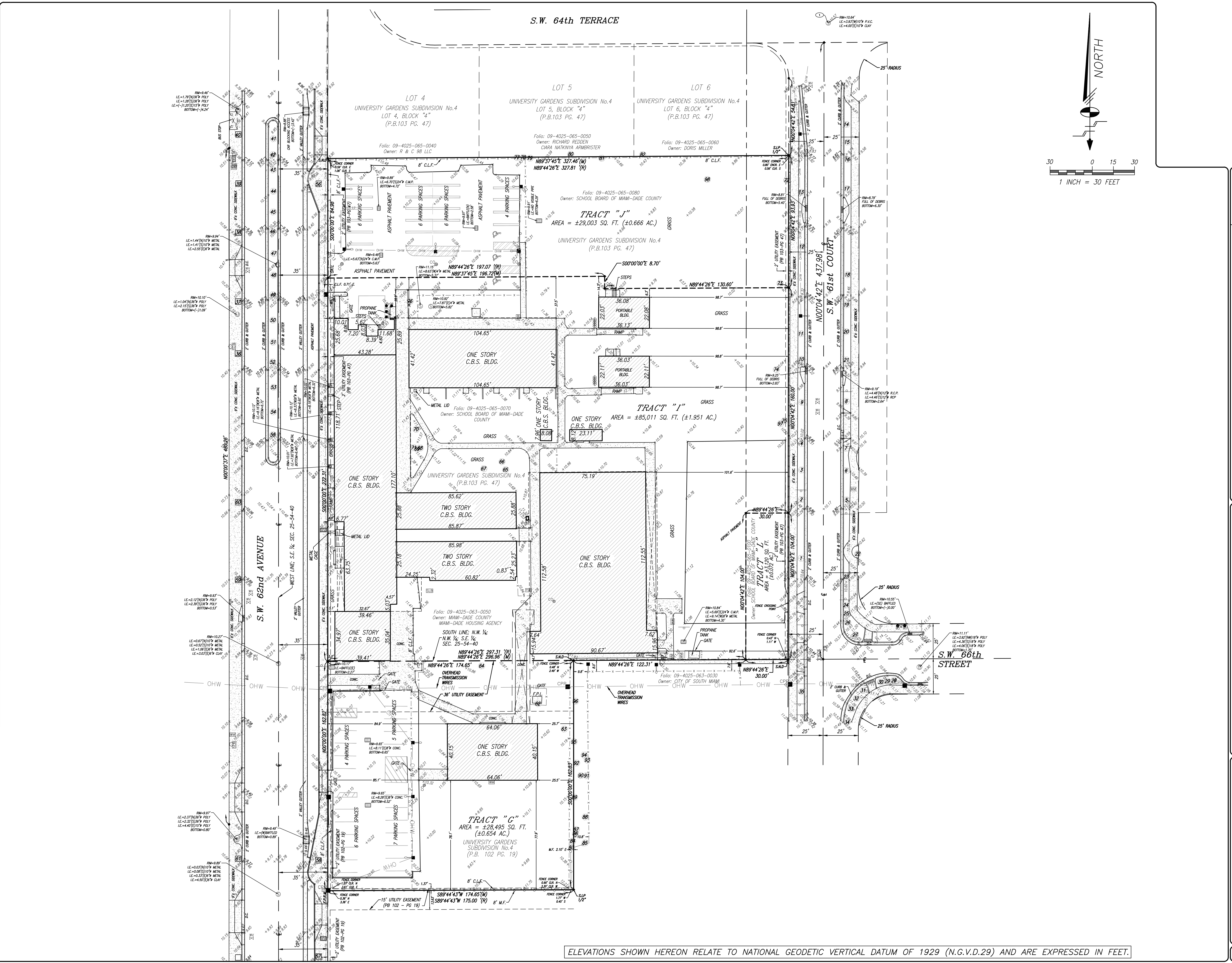


- GENERAL LEGEND:**
- ▲ AERIAL TARGET
 - ALUMINUM LIGHT POST (SINGLE)
 - ALUMINUM LIGHT POST (DOUBLE)
 - ALUMINUM LIGHT POST (TRIPLE)
 - ALUMINUM LIGHT POST (QUAD)
 - ANCHOR/GUY WIRE
 - BACKFLOW PREVENTER ASSEMBLY
 - CABLE TELEVISION BOX
 - CATCH BASIN
 - CATCH BASIN F-3
 - CENTERLINE
 - CHECK VALVE ASSEMBLY
 - COLUMN (CIRCULAR)
 - COLUMN (SQUARE)
 - CONCRETE LIGHT POLE (DOUBLE)
 - CONCRETE POWER POLE
 - CONTROL ROOM
 - COMMUNICATION PULL BOX
 - CURB INLET
 - DOUBLE DETECTOR CHECK VALVE
 - DRAIN (CIRCULAR OR SQUARE)
 - ELECTRIC BOX (ABOVE GROUND)
 - ELECTRIC BOX (BELOW GROUND)
 - ELECTRIC HAND HOLE
 - ELECTRIC OUTLET
 - ELEVATIONS (SEE NOTES FOR DATUM)
 - FIRE HYDRANT
 - FIRE LINE SWAP CONNECTION
 - FIRE LINE CONNECTION
 - FLAGPOLE
 - FLOW LINE
 - FORCE MAIN MANHOLE
 - FORCE MAIN VALVE
 - F.P.L. ELECTRIC MANHOLE
 - F.P.L. FIBER NETWORK
 - F.P.L. TRANSMISSION POLE
 - GAS MANHOLE
 - GAS METER
 - GAS VALVE
 - GREASE TRAP MANHOLE
 - GROUND LIGHTING
 - GUARD POST, BOLLARD
 - IRRIGATION HAND HOLE
 - IRRIGATION VALVE
 - MAILBOX
 - MONITOR WELL
 - MONUMENT LINE
 - P-5 INLET
 - P-6 INLET
 - PARKING METER
 - PEDESTRIAN CROSSING SIGNAL
 - PERMANENT REFERENCE MONUMENT
 - POST INDICATOR VALVE
 - VACUUM BREAKER ASSEMBLY
 - PROPERTY LINE
 - ROUND CATCH BASIN
 - SANITARY SEWER CLEANOUT
 - SANITARY SEWER MANHOLE
 - SIGN POST
 - SPRINKLER PUMP
 - STANDPIPE
 - STORM SEWER MANHOLE
 - STREET LIGHT BOX
 - SWALE INLET
 - TELEPHONE BOX (SOUTHERN BELL)
 - TELEPHONE HAND HOLE
 - TELEPHONE MANHOLE (SO. BELL)
 - TELEPHONE PARAPHONE
 - TRAFFIC HAND HOLE
 - TRAFFIC UTILITY BOX
 - TRAFFIC CONTROL POST
 - TRAFFIC SIGNAL POST
 - TRAFFIC SIGNAL BOX
 - TREE & PALM
 - UNDERGROUND UTILITY MARKER
 - UNKNOWN UTILITY MANHOLE
 - UNKNOWN UTILITY HAND HOLE
 - WATER MANHOLE
 - WATER METER
 - WATER VALVE
 - WOOD LIGHT POLE
 - WOOD POWER POLE
 - WOOD TELEPHONE POLE
 - HANDICAP PARKING
 - STROLLER PARKING
- ABBREVIATIONS:**
- R denotes RADIUS
 - A denotes DELTA ANGLE
 - CH.D. denotes ARC DISTANCE
 - CH.L. denotes CHORD LENGTH or CHORD DISTANCE
 - CH.B. denotes CHORD BEARING
 - T denotes TANGENT DISTANCE
 - P.C.P. denotes PERMANENT CONTROL POINT
 - P.M.M. denotes PERMANENT REFERENCE MONUMENT
 - F.B. denotes FLAT BOOK
 - P.C. denotes POINT OF COMMENCEMENT
 - P.O.B. denotes POINT OF BEGINNING
 - O.M. denotes OVERHEAD UTILITY WIRES
 - O.P.B. denotes OPTICAL RECORDS BOOK
 - P.C. denotes POINT OF CURVATURE
 - C.B.S. denotes CONCRETE BLOCK STRUCTURE
 - CONC. denotes CONCRETE
 - C.L.F. denotes CHAINLINK FENCE
 - M.F. denotes METAL FENCE
 - W.F. denotes WOOD FENCE
 - F.F.E. denotes FROTH FLOOR ELEVATION
 - F.P. denotes FOUND IRON PIPE
 - S.I.P. denotes SET 1/2" IRON PIPE & LB-87 CAP
 - S.I.R. denotes SET 1/2" REBAR & LB-87 CAP
 - F.A.D. denotes FOUND NAIL & BRASS DISC
 - S.A.D. denotes SET LB-87 NAIL & BRASS DISC
 - C.I.P. denotes CORRUGATED IRON PIPE
 - CONC. denotes CONCRETE
 - E.T.P. denotes ELECTRIC TRANSFORMER PAD
 - ENC. denotes ENCROACHMENT
 - D.C. denotes DEPRESSURED CURB
 - PL. denotes PLANTER
 - (C) denotes CALCULATE DISTANCE
 - IL. denotes INVERT ELEVATION
 - T.O.M. denotes TOP OF MOUND
 - T.O.P. denotes TOP OF PIPE
 - (D) denotes DEED DISTANCE
 - (L) denotes DISTANCE BY LEGAL DESCRIPTION
 - (M) denotes MEASURED DISTANCE
 - (R) denotes RECORD OR PLATTED DISTANCE
 - BOTTOM — APPROXIMATE BOTTOM OF SLOPE
 - COMM — COMMUNICATION
 - DRAIN — DRAIN
 - DIST — DISTANCE
 - ELEC — ELECTRIC
 - FM — FORCE MAIN
 - IRRIG — IRRIGATION
 - GAS — NATURAL GAS
 - OHW — OVERHEAD WIRES
 - SM — SANITARY SEWER
 - TOP — APPROXIMATE TOP OF BANK
 - VEG — VEGETATION LINE
 - WM — WATER
 - LIMITED ACCESS RIGHT OF WAY LINE



ELEVATIONS SHOWN HEREON RELATE TO NATIONAL GEODETIC VERTICAL DATUM OF 1929 (N.G.V.D.29) AND ARE EXPRESSED IN FEET.

Schedule - Shubin & Associates, Inc.
 LAND PLANNERS & ENGINEERS
 3240 CORPORATE WAY, MIAMI, FLORIDA 33135
 TEL: (305) 435-7010 FAX: (305) 438-3388

CERTIFICATE OF AUTHORIZATION No. LB-87
 Checked By: M.S.J. Date: 04/19/23
 Survey Date: 04/19/23
 Order No. 216663 E.B. No. 2307 Pg. 15/25
 Scale: AS SHOWN
 Sheet 2 of 2

NOTE: This sketch is not valid unless it bears the signature and the original raised seal of a Florida licensed surveyor and mapper.
 This is a "Boundary Survey."

BOUNDARY SURVEY

Section 25, Township 54 South, Range 40 East, Miami-Dade County, Florida

REVISIONS

No.	Date	By	Description

FILE NO. **AJ-6257**