

Superintendent's District Advisory Panel for ESE

**Exceptional
Student
Education
Update
2019-2020**



Students We Serve

- WE serve 38,197 students with disabilities, and close to 11,000 students eligible for 504 accommodations.
- Autism is the fastest growing exceptionality (6,283) with learning disabilities (14,524) as the largest sub-population of primary exceptionality.
- In Charter Schools, there are 3,782 students with disabilities and 4,490 students in gifted programs.
- 5,686 students access their education through modified curriculum.



Our Students

- Over 13,000 students receive language or speech therapies, close to 4,000 receive occupational and/or physical therapy in the education setting.
- 650+ students with IEP or 504 Plans receive in-school nursing services
- Since 2016-17, steady increase in FTE in ESE, including higher-level Matrices (254 and 255)



Accomplishments

- ✓ Higher percentages of M-DCPS students in grades 3-8 demonstrated satisfactory performance in 2019 on FSAA-PT ELA from 2 to 7 point gains.
- ✓ FSAA-PT Math results showed higher percentages of M-DCPS students in grades 4-8 demonstrating satisfactory performance in 2019 with gains as high as 10 percentage points!
- ✓ On FSA ELA SWD grades 3-10 maintained previous 2% gains at 25% proficiency.
- ✓ State Indicator 12, 100% children eligible for specialized services have IEP developed and implemented by age 3.



More Accomplishments

- ✓ On FSA Math grades 3-8 SWD achieved 2 % gains in proficiency.
- ✓ Increase of over \$500,000 in Medicaid Fee for Service Reimbursements
- ✓ 10,287 Evaluations (Speech, Birth to Two, Psychoeducational) were completed in 2017-18 within the 60 day timeline (total consents=10,593)
- ✓ In 2017-18 the district LRE rate was at 54.7% in June 2019 our LRE was at 60.2%.



Even More Accomplishments

- ✓ Annual required FDOE self-assessment results
100% compliance 2017-18
- ✓ Federal Uniform Grad Rate for SWD was 80% (above the state rate of 77%).
- ✓ Postschool outcome data:
 - 34% of SWD were enrolled in Higher Education (10% above state rate)
 - 49% in Higher Ed or employed and 51% were employed or in continuing education.



Still, More to Celebrate

- ✓ Dramatic increases in Transition Programs:
 - SYIP: 280 students participating, surpassing the CTE goal of 245.
 - STAR referrals increased from 424 in June 2018 to 755 in June 2019.
- ✓ Parent Involvement: M-DCPS had a 10.3% response rate on the annual FDOE survey and 77.3% of K-12 parents with SWD reported schools facilitated parent involvement, Pre-K 86.4%.





**Continuous
Improvement:**
Diving into our Data



REBOOT for Continuous Improvement

- While SWD grades 3-10 have made gains on FSA, proficiency rates in ELA are 25% and in Math 31%
- LRE percentage has increased over 10% in 4 years, M-DCPS 25% below state target of 85%
- Parent response rate on annual survey did not meet state target, many schools NO RESPONSES
- 2017-18 Federal Drop-Out rate for SWD is 19.2% which is higher than state target of 10%
- 2019 LEA Determination is “Needs Assistance”
 - Compliance indicators 100%
 - Performance Indicators did not meet benchmarks LRE, Drop Out Rate



ESE Data Summary

Evaluation and Placement

	2017-2018	2018-2019
Average number of parental consents for evaluation received during peak months (January-April)	1,295	1,332
Average days from parent consent to evaluation	31	31
Average days from evaluation to placement	58	49
Number of parental consents received	10,593	11,253



Gifted Data Summary

PEAK-MONTH PARENTAL CONSENT RECEIPT

	2017-18	2018-19
February	1,156	1,242
March	1,277	1,691
April	2,200	2,512

GIFTED OVERVIEW

	Parental Consents	Evaluations	Placements	Ineligible "DNQ"
2017-2018	8,808	8,758	5,604 (64%)	3,122 (35%)
2018-2019	9,874*	5,799*	2,843 (49%)*	1,243 (21%)*

*As of 6/21/19

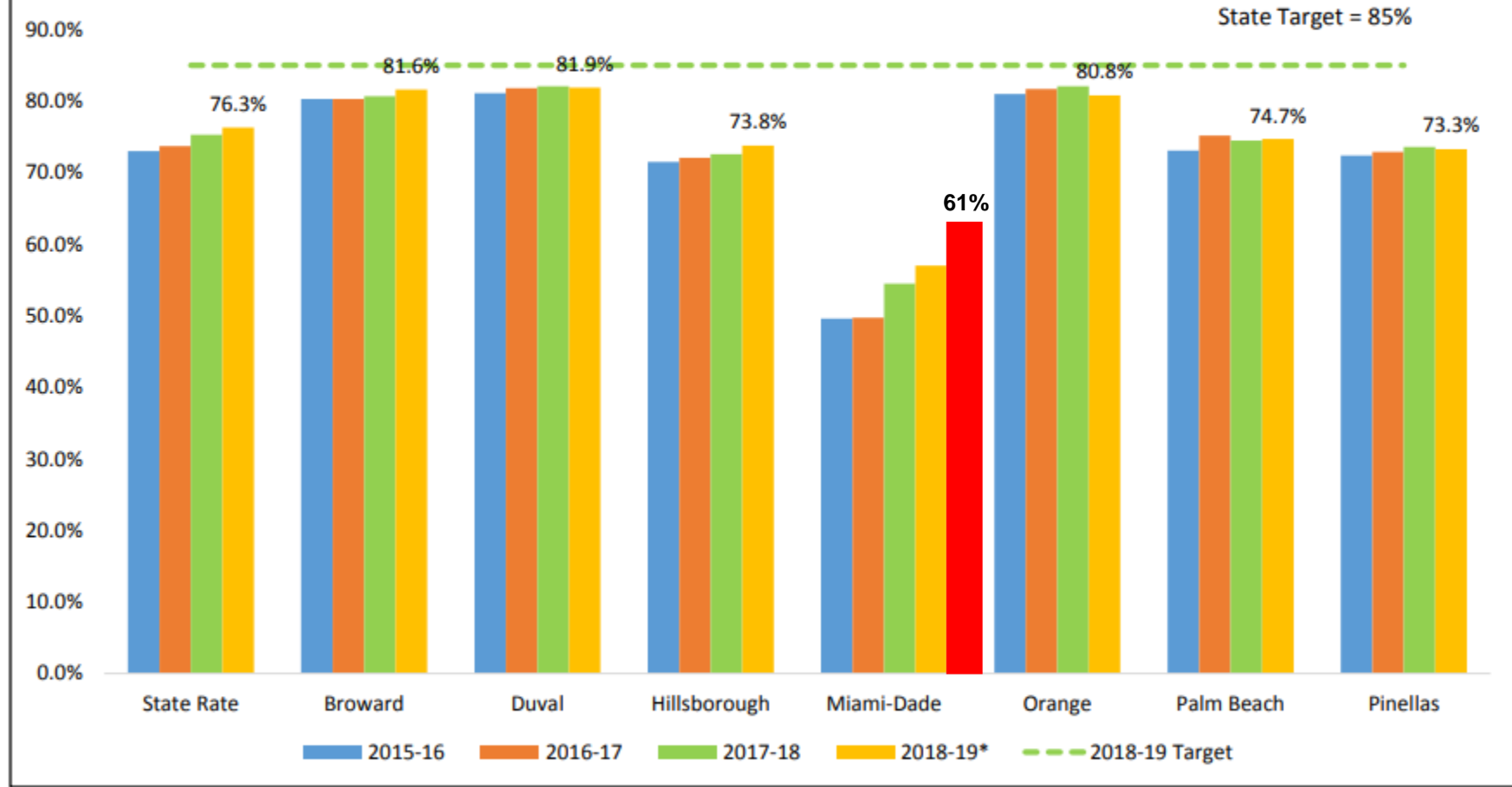


LRE Data

- In November 2018 it was reported to the Panel that Preliminary calculations in October showed the LRE at 57% with 19,490 students ages 6-21 having spent time with non-disabled peers at 80%.
- At Present the LRE is at 61.14% with 21,152 SWD in General Ed
- **This is a 12.7% increase from 2014-15!**



Educational Environment (Least Restrictive Environment) Size-Alike Comparison of Very Large School Districts 2014-15 through 2018-19*

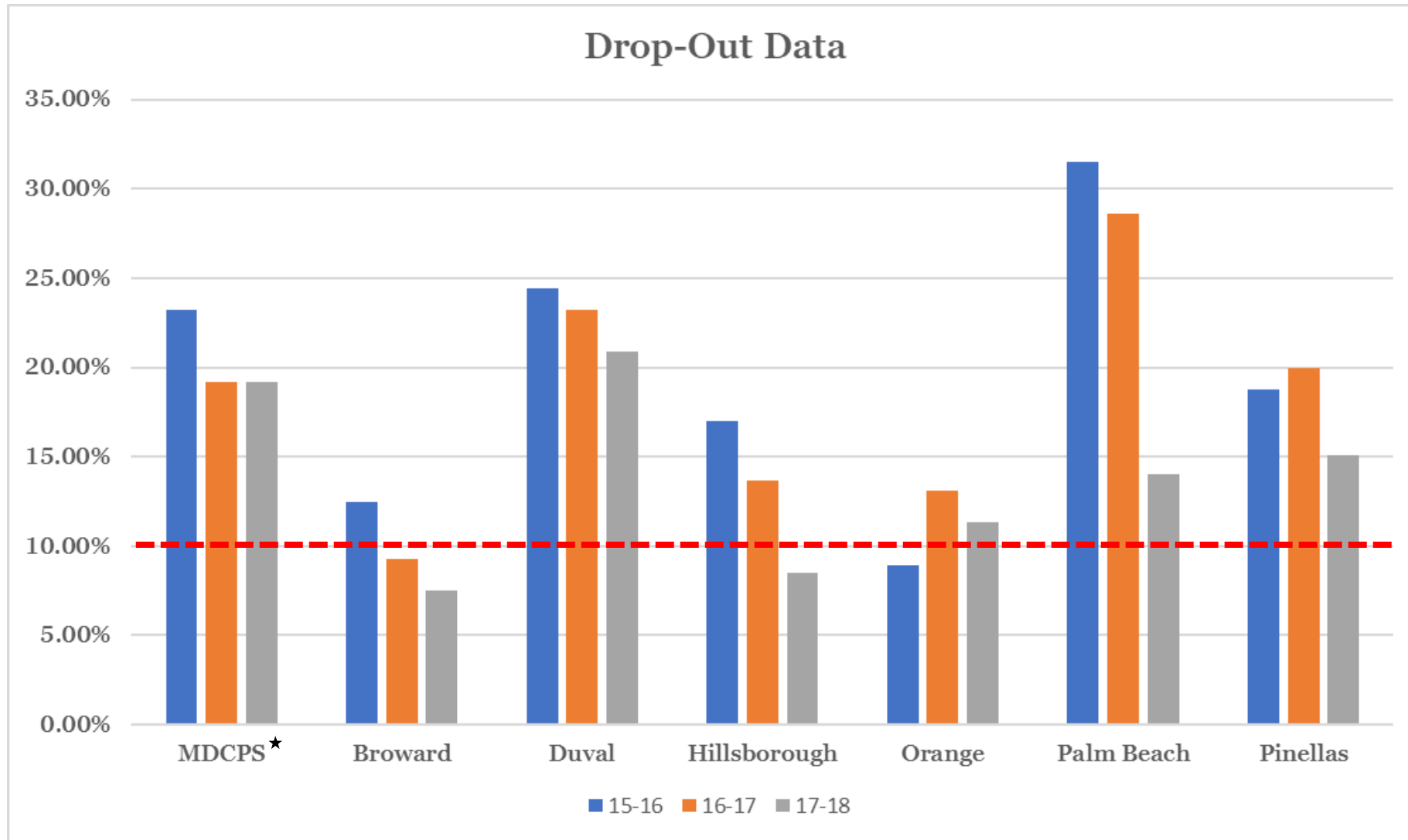


*Preliminary Survey 2

www.FLDOE.org



Drop-Out Data



Target=10% →

*Drop-Out Rate as of August 2019 is 12.6%



Goals for 2019-2020

- Ensure "Level 1" students have appropriate support and referrals align with MTSS data
- Expand ESE resources for school sites (LEAs, ESE Chairs, Administrative Teams, and Teachers)
- Increase equity and access to ESE programs (including Transition programs), supports and services across the district
- Expand parent "Library" of resources, including use of social media
- Strengthen capacity of both instructional/support professionals



Goals for 2019-2020 (cont'd.)

- Increase “Hit Rate” for Gifted referrals
- Decrease the length of time between evaluation completed and placement
- Increase compliance on indicator 11 evaluation timeline
- Increase accountability through improved data-gathering/reporting
- Continue to increase LRE percentage district-wide
- Ensure eligibility/exceptionality categories are proportionate



Improving Stakeholder Engagement

- Parents/Community
 - Annual FDOE Survey
 - Superintendent's District Advisory Panel for ESE
 - Focus groups, BPIE Planning
- Schools/Regions
 - DataCom
 - Monthly meetings with Region Directors
- Instructional Personnel (outside ESE)
 - UTD Task Force ESE
 - Curricular Focus group for teachers



Office of Academics and Transformation (OAT) Family Harvest Festival



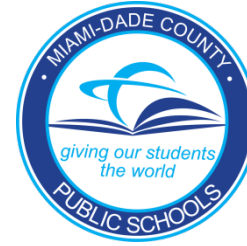
Saturday, October 19, 2019

9:00 a.m. to 2:00 p.m.

Miami Senior High School

2450 S.W. 1st ST.

Miami, FL 33135



- ❖ Arts & Crafts
- ❖ Celebrity Special Olympics Soccer Competition
- ❖ Chess Games
- ❖ Child Care
- ❖ Hiring Fair (Instructional and Non-Instructional)
- ❖ Raffles & Prizes
- ❖ FREE Colgate Dental Screenings
- ❖ FREE Vision and Hearing Screenings
- ❖ Light Breakfast and Lunch Provided
- ❖ Live Music
- ❖ Mammograms
- ❖ Presentations for Parents

Striving for Excellence



Always remember: at the end of the finish line is a child, destined for greatness, that is one step closer to reaching his/her goal.