

Superintendent's District Advisory Panel for ESE

September 27, 2021



Welcome

Welcome



Introductions





Superintendent's District Advisory Panel for Exceptional Student Education

Meeting Norms

1. Wait to be recognized by the chair before speaking.
2. Use the virtual hand-raise feature to seek recognition from the chair. If you are attending the meeting in-person, raise your hand prior to speaking.
3. Keep yourself on mute unless recognized by the chair.
4. Keep your camera on when speaking.
5. Keep comments germane to the business at hand.

Agenda

- **Sunshine Law Overview**
- **Parental Bill of Rights Presentation**
- **Consent Agenda, Approval of Steering Sub-Committee Meeting Minutes**
- **Proposed Panel Meeting Schedule for 2021-2022**
- **Proposed Panel Meeting Topics for 2021-2022**
- **Active Sub-Committees for 2021-2022**
- **ESE, Gifted, and Early Childhood Updates**
- **Wrap-up, Adjournment**



Consent Agenda

- Approval of Steering Sub-Committee Meeting Minutes



0122D912.pdf



Proposed Panel Meeting Dates for 2021-2022

- **Proposed Panel Meeting Dates for 2021-2022**
 - September 27, 2021
 - November 4, 2021
 - January 6, 2022
 - March 3, 2022
 - May 5, 2022 (tentative date for Awards Presentation unveil)
 - June 2, 2022
- **NOTE: All meetings will take place on Thursdays from 3 p.m. to 5 p.m.**



Proposed Panel Meeting Topics for 2021-2022

- **Proposed Panel Meeting Topics**
 - **September: Parent Bill of Rights, Sunshine Laws**
 - **November: Mental Health & COVID**
 - **January: Budget**
 - **March: Legislative Updates**
 - **May: Summer Programs**



Active Sub-Committees for 2021-2022

- **Awards**
- **Early Childhood**
- **Educational Programs/Inclusion Sub-Committee**
- **Gifted Education**
- **Low Incidence Exceptionality**
- **Mental Health**
- **Parent Engagement**
- **Secondary Transition**
- **Financial**



Sub-Committee Sign-up

- Please submit your Sub-Committee preferences to Ms. Angie Torres, angietorres@dadeschools.net by no later than Friday, October 1st.
- Please also indicate if you would like to co-chair a Sub-Committee.
- Submissions will be reviewed by the Chair and Panel Liaison and notice of Sub-Committee Co-Chairs and Membership will be e-mailed to you the following Friday, October 8th.



Update

- **ESE**
 - **Current Enrollment Data**
 - **Accomplishments**
 - **Strategic Plan Alignment**
 - **New Initiatives**
- **Gifted Update**
- **Department of Early Childhood Programs**
 - **Who We Serve**
 - **Accomplishments**
 - **Strategic Plan Alignment**
 - **New Initiatives**



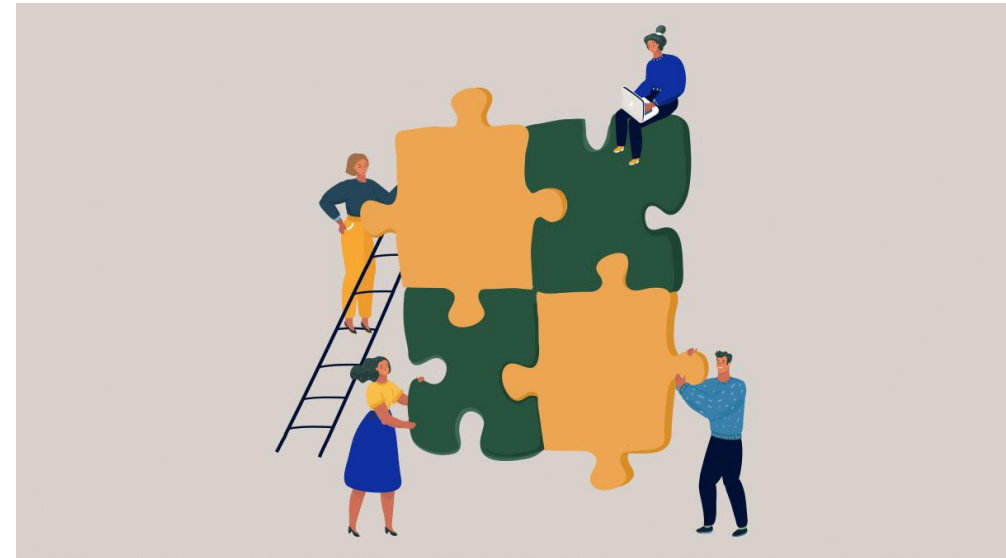
Current Student Population (SWD)

Program/Exceptionality	Enrollment
Autism Spectrum Disorders (ASD)	6,362
Deaf or Hard-of-Hearing (DOHH)	413
Developmental Delay (DD)	2,289
Dual Sensory Impaired	10
Emotional Behavioral Disability (EBD)	1,382
Established Conditions	36
Hospital Homebound	294
Intellectual Disability (InD)	2,238
Language Impaired	1,310
Orthopedically Impaired (OI)	171
Other Health Impaired (OHI)	5,552
Specific Learning Disability (SLD)	12,390
Speech Impaired	1,462
Traumatic Brain Injured (TBI)	28
Visually Impaired (VI)	136
TOTAL Number of SWD	34,073



Specific Data: SWD

- We serve over 30,000 students with disabilities, close to 12,000 students eligible for 504 accommodations.
- Specific learning disabilities (12,390) is the largest sub-population of primary exceptionality
- The identification of students with Emotional Behavior Disability continues to decline as evidenced by the 178 student decrease in this primary exceptionality.
- Over 5,000 students access their education through modified curriculum.



More Facts: SWD

- **Regarding related services:**
 - Over 5,000 students are provided language therapy or speech therapy
 - Over 11,000 students are provided language or speech direct services
 - Close to 4,000 students receive occupational therapy
 - Over 600 students with IEPs or 504 plans receive in school nursing
 - Approximately 1,500 students received counseling support services
- **Current LRE Rate: 66.83% (4% increase from 2019-2020)**



Accomplishments Exceptional Student Education

FSAA

2020-2021
ELA: +2%
Algebra 1 EOC: +11%

Parent Survey Feedback

2020-2021
12.1%+
Highest Ever for Miami-
Dade Public Schools!

Medicaid Reimbursement

2020-2021
\$1,074,613
In fee-for-service claims,
despite the pandemic!



Accomplishments Exceptional Student Education

ESE

Indicator Data

2020

Indicator 1 (Graduation)

LEA Data: **84.4% (+2%)**
SEA Target: **62.3%**

Indicator 5A (LRE)

LEA Data: **66.83% (+4%)**
SEA Target: **85%**

Indicator 11 (Evaluation Timelines)

**96.8% of Evaluations were
completed within the 60-day
timeline**



Strategic Plan Alignment: Exceptional Student Education

Infinite Possibilities: ESE and the M-DCPS 2020-2021 Strategic Plan

Pillar I: Relevant, Rigorous, & Innovative Academics

Priority 2: Eliminate the achievement gap while accelerating all students to their full academic potential.

Objective #5: Increase the inclusion rate of students with disabilities into mainstream classrooms by 10 percentage points.

Reduce the number of Black/African American (B/AA) students being found eligible or identified as E/BD in all schools by 10%.



State Board of Ed Rule Update

- **Amendments to Rules:**
 - Rule 6A-1.09401, F.A.C., Student Performance Standards
 - Rule 6A-1.0943, Florida Administrative Code (F.A.C.), Statewide Assessment for Students with Disabilities
- **Highlights:**
 - Only students with the “most significant cognitive disabilities” may participate using alternate standards, curriculum, and assessment
 - IEPs must contain a sufficiently detailed statement of why the student cannot participate in the regular curriculum and assessment
 - All students in Kindergarten must be changed to standard curriculum



What's New with ESE?

2021-2022

Means to Accelerate Performance (MAPS)

- ❖ **Transition GPS**
 - ❖ Information about transition services and programs via the M-DCPS application.
 - ❖ Increase Employment Training Programs
 - ❖ Establish new Life Skills and Employment Skills Programs for SWD
 - ❖ In partnership with Adult Ed.
- ❖ **Reading Success Academy (RSA)**
 - ❖ Provides curriculum and training to schools
 - ❖ S.P.I.R.E. Curriculum
 - ❖ Various Formats of Implementation
 - ❖ 18 schools participating
 - ❖ **Dyslexperts**
 - ❖ One teacher selected for each Elementary and K8 Center
 - ❖ Receiving specialized training in addressing the needs of students with Dyslexia and other Language-based learning disabilities

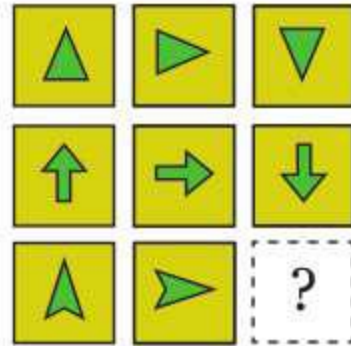


Gifted Updates-NNAT

- Naglieri Nonverbal Ability Test 3 (NNAT-3)
- To be administered to Grade 1 students on November 9-10
- Computer based assessment
- Brief, culture-fair nonverbal measure of general ability
- Useful as part of the process of identifying students for gifted programs, especially for underrepresented students
- Uses abstract figural designs
- Does not rely on verbal skills or achievement



NNAT 3 Sample



Gifted Updates-Grant

- The district will partner with George Mason University to implement a Javits Gifted Grant: Project ExCEL (Experiences Cultivating Exceptional Learning) – Ignite (**E-Ignite**).
- The goal of the grant is to effectively increase the number of underrepresented gifted populations including African American, Hispanic, and English Learners, those who are economically disadvantaged and children with disabilities by implementing STEM aligned Problem-Based Learning (PBL) curriculum as a universal gifted screening that embeds a dynamic performance assessment.
- **Implementation will take place in 5 M-DCPS middle schools: Miami Lakes, Lake Stevens, Riviera, Jose de Diego, and Ponce de Leon Middle Schools**



Gifted Updates-Legislative Platform

- **School Board Item E-202 adopted the Legislative Platform for the 2022 Legislative Session. This item includes the following related to gifted and advanced academics:**
- **Support adding the attainment of the Advanced Placement Capstone diploma as one of the eligibility requirements for Florida Bright Futures Scholarship Program.**
- **Oppose legislation that would limit gifted programs to eligible high school students.**
- **Eliminate the arbitrary cap on the number of gifted high school students funded.**
- **Provide funding for Dual Enrollment courses taken beyond the school day, above the 1.0 FTE or 25 hours/week.**



DECP Program Enrollment September 2021



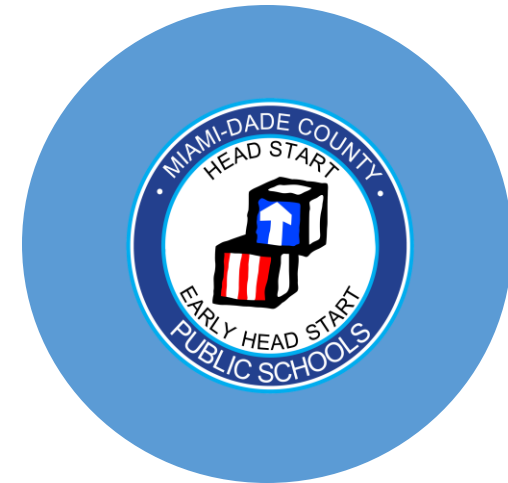
5,064

VPK Title I and
Fee-Supported



2,099

All Pre-K ESE 3- & 4-year-olds
with Role Models



1,617

Head Start 3- & 4-year-olds



2020-2021 DECP PROGRAM HIGHLIGHTS

VPK Assessment AP3 (ME/EE)

Print Knowledge: 91%
Phono Awareness: 89%
Oral Lang./Vocab: 89%
Mathematics: 91%

Ready Rosie Family Access

81%
Families Connected

Pre-K ESE Staffing

61%
decline in no-shows



Infinite Possibilities M-DCPS 2021-2026 Strategic Plan

DEPARTMENT OF EARLY CHILDHOOD PROGRAMS

Pillar I: Relevant, Rigorous, & Innovative Academics

Priority 2: Eliminate the achievement gap while accelerating all students to their full academic potential.

Objective #4: Increase the percentage of M-DCPS Voluntary Prekindergarten (VPK) Program students that score ready for kindergarten by 10 percentage points.

Pillar I: Relevant, Rigorous, & Innovative Academics

Priority 3: Provide equitable access to quality and innovative instructional programs.

Objective #3: Increase the number of students that participate in district pre-school programs by 10%.

- Increase VPK Quality Metric
- Expand Pre-K classrooms
- Strengthen the primary grade continuum of learning
- Lead family engagement in Pre-K - K
- Expand community-based organization partnerships



2021-2022 Means to Accelerate Performance (MAP)



Pre-K Blooms!



- ❖ 56 new Pre-K classrooms
- ❖ Select expansion schools identified to include 3-year-olds
- ❖ Quality Interactions-House Bill 419
- ❖ Steaming from the Start

Thank you!

